

Good Field Conditions

(Continued from Page 6)

soil conditions," he said.

The Maximucks planted the Solebury field on May 11, 1993, in 30-inch rows at a population of 25,300 plants. The seed used was Dekalb DK623. The field was harvested on Nov. 8.

Maximuck said that they use a wide range of maturity dates with Dekalb seed.

They don't do any sidedressing. The only other time they spend in the field is scouting for insects and weed pressure and spraying.

The weed pressure they experienced was morning glory, hemp dogbane, bur

cucumber, panicum, and Canada thistle. Because of the corn residue from last year, there is a problem with slugs — one of the reasons why Matthew said they are considering using some form of zone-tillage on this year's crop.

The crop was not irrigated. He and his father have been using 30-inch row spacing for the past 20 years. They believe it is important to boost the plant population and place the stalks closer together, with anywhere from 6-inch to 8½ -inch seed placing, depending on variety.

One farm that Matthew classifies as "wet" has a small window of opportunity. When

the conditions are right, that farm has the priority and is done. "Because if you miss that window, then it will be wet until the middle of July," he said.

One of the problems they experienced this year was a lack of rain after the anhydrous ammonia application.

"If it's another dry year and we put anhydrous down and we don't get any rain on top of it, we definitely want to run some type of tillage piece over it so we get better seed-to-soil contact," he said.

For weed control, they use Bicep and Gramoxone for burn down and Furadan for insects. They will be using liquid Furadan this year. For additional insect control, they use Banvel



CORN TALK NEWS

PENNSYLVANIA MASTER CORN GROWERS ASSOC., INC.



Some of the bird seed, utilizing corn grown on the farm, is packaged in containers, such as this one held by Matthew, for sale.



The Maximucks have been inspecting and cleaning up the planting equipment. Here, Matthew sprays lubricant on a chain to his no-till soybean planter.

and Accent.

"Every field is different," he said. "We won't just mix up and just go spray everything.

"We do a lot of scouting. Dad does a lot of that," he said.

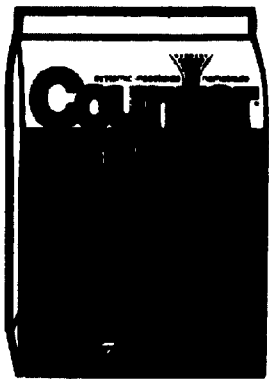
What has helped the past year's corn crop has been the

timely rains.

"Most of our corn this year had just enough rain to keep it going, which I think really helped," said Maximuck. "We were drying up a few different times. But then we'd get a quarter-inch or something, just enough to keep the corn going."

This is the third year that the
(Turn to Page 8)

ROOTWORMS BEWARE. YOUR TOUGHEST ENEMY JUST GOT TOUGHER. NOW LABELED FOR USE WITH ACCENT® HERBICIDE



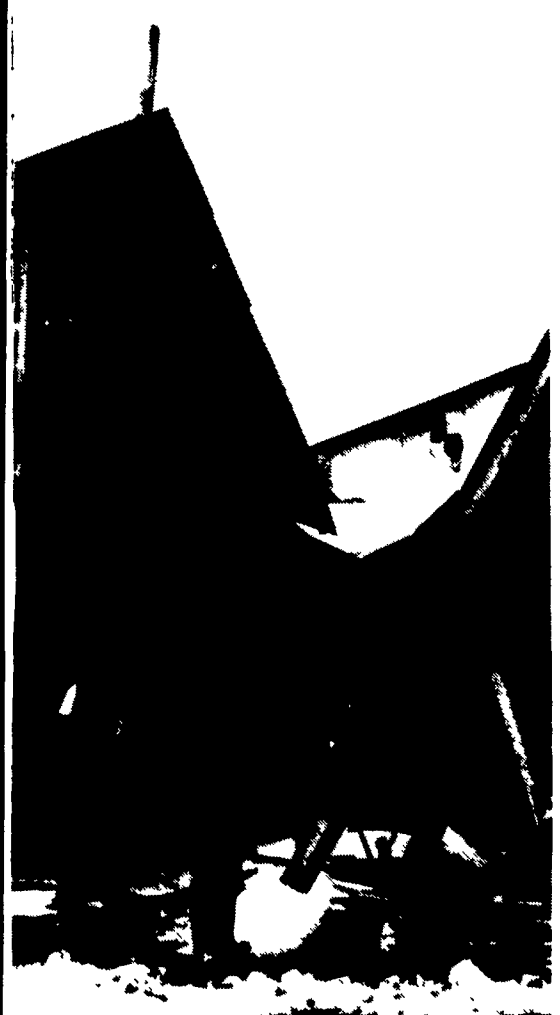
COUNTER® 20CR® systemic insecticide-nematicide gives corn growers all the most desirable insecticide features in one outstanding product.

UNIQUE PELLET. COUNTER 20CR has the active ingredient evenly distributed throughout each pellet. The pellets break down gradually, providing controlled release for longer term effectiveness.

OUTSTANDING PERFORMANCE. No other corn insecticide can match the performance and broad-spectrum control of COUNTER. Corn treated with COUNTER has bigger, stronger roots, for healthier plants and higher yields.

MORE HERBICIDE OPTIONS. Applied banded, COUNTER 20CR is labeled for use with ACCENT® and virtually any other herbicide. So you don't have to sacrifice rootworm control for weed control.

LOWEST DUST. COUNTER 20CR is formulated with soybean oil, and the pellets don't crumble during handling and shipping. So there's virtually NO dust. For information about COUNTER 20CR, see us.



Recently, because of the heavy snow and ice in the area, a roof over a grain drier collapsed. The Maximucks have spent a lot of time taking care of the farm's older structures because of bad weather.

See The AgriCenter  Dealer Nearest You

Or For More Information Call Your Cyanamid Rep.

Eastern Pennsylvania Area:
Mike Fleming
717-697-0661

Western Pennsylvania Area:
Jim O'Bryan
814-867-9648