

PUBLIC AUCTION

1 1/2 STY. BRICK HOME,
ANTIQUES & HOUSEHOLD ITEMS
SAT., APRIL 9
3:00 P.M.

Property located along Rt. 333 in the village of Rockville, BUT WILL BE OFFERED FOR SALE, at Juniata Markets, Jct of Rts. 75 & old 22, at the blinking lights, 1 mi. N. of Port Royal, Juniata Co.

REAL ESTATE selling at 7:00 P.M.

Offering a 1 1/2 sty brick home w/attached 1 car garage. The 1st floor consists of 2 bedrooms, living room w/fireplace, den finished in knotty pine, full bath, modern kitchen w/ built-in oven, stove top & dishwasher. The 2nd floor offers 2 bedrooms, walk in closets. 3rd room for storage or upstairs bath. Full basement incl. laundry room, cold storage & family room or office w/outside entrance. Back entrance is thru a screened in patio, 13'x36'. There is oil forced air heat, on lot septic and town water. There is also a separate 2 car garage w/storage above & a woodstove hook-up. This is a large level lot w/circle driveway, nice shade & shrubbery including a rose garden.

SPECIAL FEATURES: This home has an elevator and wide doorways to accommodate a wheel chair.

SHOW DATES: March 12 & 19 from 10 A.M. to 2 P.M. or ph. 717-527-2405 or 2364 for appt.

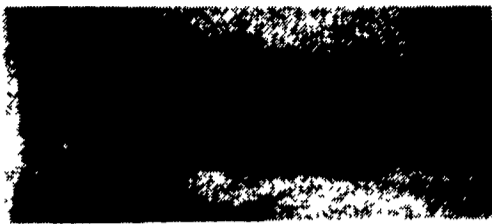
TERMS: 10% down at time of sale, bal. in 30 days, other terms at sale, no out of state checks.

THE CLARABELLE AND WILLIAM HEAPS FAMILY

Clyde R. Bomgardner, Atty.
Long's Auction Service
Ph. 717-527-2405 or 4458
AU001702L

PUBLIC SALE OF VALUABLE REAL ESTATE SAT., APRIL 16, 1994 2 PM

The undersigned will offer at Public Sale that certain tract of land known as 297 Rolling Terrace (Forest Hills) Leola, Pa. Upper Leacock Twp., Lanc. Co.



Erected thereon a Brick Rancher w/a one car attached garage. Large attic space. Full unfinished basement. Aluminum storm doors & windows. Asphalt shingle roof, 3 bedrooms, 10'x12', 10'6"x12', 11'x13'6", large closets & hardwood floors. Full tile bath w/2 bowl vanity, 13x18'6" living room w/carpet. 16'x24' eat-in kitchen, modern cabinetry w/glass door china closet, Frigidaire counter top stove & oven, ceiling fan, washer & dryer hookup in heated garage, oil fired hot air heat, electric water heater, public water & sewer. Lot size 90x150 13,500 sq. ft. Appliances will be auctioned off after the real estate. Maytag washer & dryer, approx. 16 cu. ft. Haverly chest type ind. freezer, Amana window air conditioner.

Auctioneer Note: This beautiful rancher is located one block off Rt. 23 within walking distance to a church, bank, restaurant, pharmacy & stores. Open house Sat., March 26 & Apr. 2 2-4 PM. 10% down at sale, balance at settlement on or before June 15, 1994.

Terms by:

ROBERT W. & EMMA W. GOOD

James K. Weaver, Atty
Wentz Weaver & Kilg

Samuel H. Stoltzfus, Auctioneer
215-445-4941 AU908L

Public Auction Register

Closing Date Monday 5:00 P.M.
of each week's publication

SAT. APR. 2 - 10:30AM
Tractors, silage & ground equip. Walkersville, Md. Mr. & Mrs. Clarence "Dick" Wolfe, Jr., owners. Trout aucts.

SAT. APR. 2 - 11AM,
Robert Miller Company
Inventory Reduction Auction. Located North Cohocton, New York. Pirrung

Aucts., Inc. 716-728-2520.

SAT. APR. 2 - 11AM, Farm Equipment. Located 7-1/2 Mi. N. on Rt. 100 From Rt. 1-78 Or 1/4 Mi. S. On Rt. 100 From Rt. 309 To Werley Cor. Rd. Turn West Onto Werley Cor. Rd. 2 Mi. To Auction. Sale Ordered By, Gerald M. Kressley. Dean M. Vermeulen, Auct.

SAT. APR. 2 - 11AM,
Chester Co. 4-H Helfer
Benefit Sale. Located Solanco Fairgrounds in Quarryville Sale. Mgr. John St. John. 610-869-8740.

SAT. APR. 2 - 1PM Valuable ± Acre Farmette. York Co., Pa. From I-83 exit 7 (E Prospect Rd) Take Rt 124 E ± 1.5 mi. turn R onto Rt 24 S for ±4.8 mi. Turn L at Rutter's store & follow Prospect Rd. ±1.2 mi. to sale on R at corner of Prospect Rd. & Kendale Rd. John H. Rexroth, owner. Melvin Haines, Ralph Breneman, auct.

SAT. APR. 2 - 5PM Farm Toy Show & Auction, Lancaster, Pa. at the Eden Resort Inn and Conference Center, Rt. 30 and 272 N junction, less than 1 hour from Harrisburg, Reading, or York. Randy Stoltzfus and Rich Harry, aucts.

MON. APR. 4 - 9AM 2 story brick dwelling, real estate, trucks & cars, auto repair & body tools, auto, magazines & ephemera, antiques, household goods. Leola, Pa. At 63 East Main St., Leola, Lanc. Co., Pa. By Daniel T. Smith estate. Horst aucts.

MON. APR. 4 - 10AM, Modern Farm Machinery. Located Centre Co., 5 Miles West Of State College, Pa. Owner, Mr. & Mrs. Carl Gilligan. Aucts. Hon Gilligan & Son #AU339L & AA2223L.

MON. APR. 4 - 6:30PM, Wholesale Furniture. Located A&C Diefenbach Auction Inc., 100 West Jackson Street, New Holland, Pa. 17557. Alan Diefenbach Auct.

TUES. APR. 5, Farm Machinery. Directions From Williamsport Route 15N To Trout Run Exit Route 14N To Canton in Canton Take Route 414 E To East Canton To Suzuki Dealer On Left, Next Rd. Turn Right, Go To Cross Road Turn Left On Southside Road To Farm On Left, Bradford Co. Terms By, Wilcox Brothers. Kline, Kreider & Good Aucts.

TUES. APR. 5 - 10AM, New Idea 767 Superchopper, 1469 Haybine, 6275 Deutz Allis Tractor- 1400 Hrs. Located At The Farm For Glenn Fresse in Chester County, Pa., 1 Mile North Of Oxford On Forge Road. From Route 1 Bypass Go South On Route 272. Go Left At Light Onto Baltimore Pike, 1st Road Left. Steve & Steve Jr. Petersheim, Aucts.

Rawlinsville Volunteer Fire Co.

26th Annual All Day Auction

Saturday, April 9

8:30 a.m. sharp

Location: 272 South to Truce, Turn right onto Truce Road, go to stop sign, turn left, sale on right.

Consisting of: Shrubby and plants, antiques, building materials, new and used tools, lawn, garden and farm equipment, household and dry goods. Many items too numerous to mention.

Note: Items to be sold on commission basis or may be donated. Items must be in good condition. No appliances, tires, cars or trucks. Sale Committee reserves the right to refuse any or all items for the sale. No out of state checks accepted.

Donated items appreciated. Items will be received on Sat., April 2 from 9:00 a.m. to 3:00 p.m., Mon., April 4 and Tuesday, April 5 from 4:00 p.m. to 8:00 p.m., Wed., April 6 from 12 noon to 8:00 p.m. and Thurs., April 7 and Fri., April 8 from 9:00 a.m. to 8:00 p.m.

For more information, call
(717) 284-3023, 786-7982 or
786-2080. Great food by the Ladies
Auxiliary and others.

Local and Well Known
Auctioneers
Diller-AU-000226L

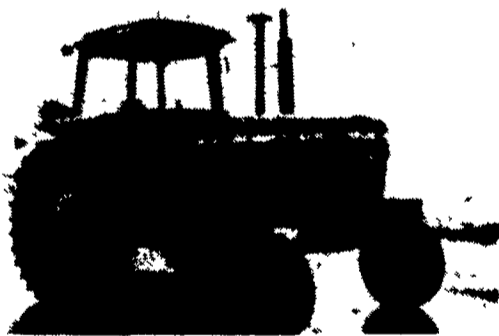
Terms and conditions
by Rawlinsville Sale
Committee

FARM EQUIPMENT AUCTION

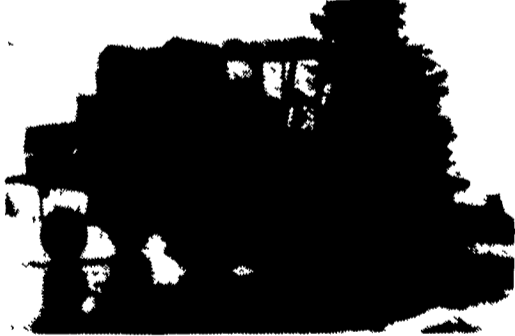
SATURDAY MARCH 26, 1994 9:00 am
LARGE EQUIPMENT AT 12 noon

423 S. Colebrook Road • Manheim • Lancaster County • PA

Rapho Twp. - 1 mile S. of Sporting Hill - 2 miles west of Manheim Auto Auction
Route 283 to Manheim/Mt. Joy exit, Turn East on 772 • 3.5 miles, turn right (South) on Colebrook Road • See auction signs 8 tenths of a mile on left.



JD 4440 • 2500 Hrs. Excellent Condition



JD 4420 • 3100 Hrs. W/Grain & Corn Heads

MACHINERY SUPPER CLEAN, SHED KEPT AND WELL MAINTAINED

FARM EQUIPMENT: JD 4440 • JD 4420 Combine • JD 213 12' Grain Head • JD 443 4 row Corn Head • JD 2010 w/ Cultivators • JD B w/ Cultivators • JD 170 Skid Loader 1100 Hrs. w/ Forks • JD 7000 4 row Corn Planter • JD 8200 Grain Drill • JD 14' Stalk Chopper • Triple K 12' Harrow • Woods 10' Hydraulic Blade • Cat 5' Rear Blade • JD 10' subsoiler • Myers 150 Gal. Boom Sprayer • 6 Cyl Diesel Hercules Irr. Pump • 7' "Home-Built" Duel Cultipacker • JD 3 pt. 7' Sickle Bar Mower • Gravity Bin w/ Hydraulic Fertilizer Auger New • 6' Bush Hog • JD Flat Wagons • Holland 2 row Transplanter New • Hershey Tobacco Transplanter • Approx. 24,000 Tobacco Lath • Tobacco Shears, Scaffolding • Minnich Tobacco Presses • Tobacco Hoers • Double Tobacco Ladder • Tobacco Fan • Rino 3 pt. Blade • Bail Elevator • 2- Bottom Oliver Plow 14" • Grain Auger • 2 Spike Harrows • Snow Bucket for Sauder Loader • Suit Case Weights • 2-100 Gal. Polly Tanks • New Idea Ground Drive Spreader • 8' Roller Harrow

TRUCKS & TRAILERS: '72 International model 1800 flat bed truck w/15' bed, air, 33000 gvw, HD frame, 392 gas engine, 2 speed 23000 rear, good cond, road ready • '70 Ford F750 dump, single axle, 2 speed, 351 gas engine, road ready • 28' Trailco tandem grain trailer, alum dump, road ready. • '72 Ford F150 pickup, 6 cyl road ready • 8' fiberglass pickup cap, excellent condition • '91 16' Tandem Landscape Trailer w/ sides

SHOP, LAWN & GARDEN, MISCELLANEOUS: '86 Honda ATV 350 4x4 • Troybuilt 12 hp electric start rototiller • Gravely system with mower, sweeper, snow blade. • JD rototiller • Jacobsen 5 HP riding mower • JD Push Mower • Pressure washer • Pot belly stove • 400' 4" sewer & drain pipe • Milk cans • Burlap bags • Bag wagons • Tire chains • Chicken & turkey crates • Old grain cleaner • Wooden wheel barrow • 2 hole corn sheller • Bag scales w/ weights • Old Wiard plow • Old JD potato hiller • Lumber • Misc. shop tools • Bolt bin • Numerous other lawn, garden and shop items!!

TERMS: Cash or check, out of state needs a bank letter guaranteeing funds addressed to this auction.

AUCTION FOR: Estate of Charles L. Hummer

The information contained in this brochure has been obtained from reliable sources. No liability for its accuracy, errors, or omissions, is assumed by the seller or its agents. Announcements made at time of sale take precedence over all printed and oral information.

Jonathan B. Hummer - Auctioneer
AU-002470L

Food on Premises

Jan M. Waltz - Auctioneer
AU-003141L (717) 664-4563

INTERESTED IN FARM TOY COLLECTING? ATTEND THE

TOY SHOW & AUCTION



SAT., APRIL 2nd, LANCASTER, PA
At the "EDEN RESORT INN and CONFERENCE CENTER"
Routes 30 and 272 N junction, less than 1 hour from Harrisburg, Reading or York. Special lodging rate at the Eden. Call (717) 569-6444 and mention Toy show. (The Eden was formerly the Treadway Inn)

SHOW - 8:30 am till 2:00 pm

OVER 135 Tables Featuring: FARM TOYS, WINROSS, ERTL, HESS & BANKS

May be the BEST show in the east for older and custom farm toys & trucks!!

Custom farm toy builders from as far as Iowa and Illinois: GILSON RIECKE, TERRY RAUCH, C&M, DOUG HARKE, THE LINDEMANS, CABIN TOYS & PARTS, THE WINROSS COMPANY & CLUB, JIM LORD. Collector books, display cases, racing. (3) Showrooms. Admission charge to show only. Over 64-FREE. Show info: (717) 768-3066.

Thousands of items for sale prices from \$1.00 to over \$1,000.00

AUCTION - TRUCKS AND FARM TOYS - 5:00 pm

Many good older items: Farm toys of all types including some early cast iron, Weber customs & Freiheits. Also a few 60's steel trucks plus HESS and Winross.

Auctioneers-Randy Stoltzfus and Rich Harry
(AU-1906-L) To consign call: (717) 656-8919

SAVE\$ - Reduced Show Admission With This Ad!