

**Philadelphia
Potato & Onion**

Philadelphia, Pa.

Wednesday, March 16, 1994

ONIONS AND POTATOES
---ONIONS DRY: MARKET YELLOW
JBO LOWER, OTHERS ABOUT
STEADY. US#1 OR GENERALLY
GOOD QUAL AND COND UNLESS
OTHERWISE STATED. Yellow Globe
Type NY 50 lb sks med 10.00-12.00 mostly
10.00-11.00 Spanish Hybrid CO 50 lb
sks jbo 12.00-13.00 mostly 13.00 few
14.00 ID/OR 50 lb sks jbo 12.00 fr cond
10.00-12.00 WA 50 lb sks jbo 13.00-14.00
fr cond 11.00-12.00 Red NY 25 lb sks lge
few 20.00 BOAT Yellow CL 50 lb sks jbo
9.00-11.00 some 8.00 45 lb crts 72s
11.00-12.00 NEW CROP Yellow MX 50
lb sks jbo 18.00 TX 50 lb sks jbo
14.00-15.00 White MX 50 lb sks jbo few
17.00-18.00 BOAT Yellow CL 50 lb sks
col 12.00 ---POTATOES: MARKET
ABOUT STEADY. US#1 SZ A WASHED
OR BRUSHED UNLESS OTHERWISE
STATED Russet Burbank ID bld 10 5-lb
flmbgs non sz A 8.00-9.00 mostly 8.50
some 9.50 100 lb sks 10 oz min fr qual
15.00-15.50 50 lb ctns 70s 18.00-19.00 80s
18.00-19.00 90s 13.00-14.50 mostly
13.00-13.50 few 11.00 100s 9.00-11.00
mostly 9.00-10.00 some 8.50 120s 10.00
140s 10.00 Norkotah CD Prince Edward
Island CDOne 50 lb ctns 70s 13.00 90s
10.50-11.00 100s 9.00 Round White CD

Prince Edward Island CDOne 50 lb sks
7.00-7.50 mostly 7.00-7.25 lge 7.50-7.75
mostly 7.50 LI 50 lb sks 7.00-7.
25 lge 7.25-7.75 NEW CROP Round Red
FL 50 lb sks 25.00.

**Oklahoma City
Feeder Cattle**

Oklahoma City, Okla.

Wednesday, March 16, 1994

*** ATTENTION DODGE CITY ***
OKLAHOMA NATIONAL STOCK-
YARDS WEEKLY CATTLE SUM-
MARY: Compared to last week: Feeder
steers unevenly steady to \$1.00 higher.
Feeder heifers steady to \$2.00 higher.
Demand moderate for feeder cattle. Stock-
er cattle and calves \$2.00-\$4.00 higher.
Stocker trade very active with outstanding
demand as recent moisture and open warm
weather has wheat growing rapidly. Flesh
condition of feeder cattle improved for
buyers and mostly slightly thin to slightly
fleshy. Stocker cattle in thin to average
condition and very attractive to buyers.
Weigh conditions gaunt to average, few
full. Slaughter cows steady. Slaughter bulls
\$1.00-\$2.00 higher. Receipts this week
12,400; last week 17,054; last year 14,782.
Supply consisted of 77 percent yearlings
over 600 lbs.; 20 percent stockers and
calves under 600 lbs.; 3 percent cows and
bulls. Prices follow with weighted average
weight and price in parenthesis.
Feeder Steers: Medium and Large

Frame 1: 300-350 lbs. (321 lbs.) \$117.00-
\$123.00 (\$120.21); 400-500 lbs. (450 lbs.)
\$106.50-\$116.00 (\$111.33); 500-550 lbs.
(528 lbs.) \$100.00-\$108.00 (\$103.39);
550-600 lbs. (576 lbs.) \$95.00-\$106.50
(\$100.60); STOCKERS 600-650 lbs. (624
lbs.) \$88.00-\$97.75 (\$94.06); STOCKERS
650-700 lbs. (669 lbs.) \$86.00-\$90.75
(\$88.12); FEEDERS 650-700 lbs. (682
lbs.) \$83.00-\$88.00 (\$85.28); 700-750 lbs.
(721 lbs.) \$82.00-\$85.00 (\$83.58);
750-800 lbs. (773 lbs.) \$79.75-\$83.75
(\$81.39); 800-850 lbs. (817 lbs.)
\$78.50-\$82.25 (\$80.38); 850-900 lbs. (870
lbs.) \$77.25-\$80.50 (\$78.72); 900-1000
lbs. (950 lbs.) \$75.00-\$78.50 (\$76.77).
Holstein Steers: Large 2: 400-500 lbs.
\$76.00-\$79.00; 550 lbs. \$75.25; 625-676
lbs. \$67.50-\$68.75; 700-750 lbs.
\$63.50-\$64.85 (\$64.63); 750-850 lbs. (800
lbs.) \$61.25-\$63.50 (\$62.45); 900-950 lbs.
(929 lbs.) \$60.00-\$60.75 (\$60.16).
Feeder Heifers: Medium and Large 1:
350-400 lbs. (371 lbs.) \$103.00-\$108.00
(\$106.54); 400-500 lbs. (450 lbs.)
\$90.00-\$99.00 (\$95.81); 500-550 lbs. (526
lbs.) \$86.50-\$94.50 (\$90.47); 550-600 lbs.
(573 lbs.) \$82.50-\$92.00 (\$86.39);
600-700 lbs. (650 lbs.) \$79.25-\$85.75
(\$82.10); 700-800 lbs. (750 lbs.)
\$77.50-\$82.00 (\$78.88); 800-900 lbs. (850
lbs.) \$74.25-\$77.75 (\$75.98).
Slaughter Cows: Cutter, Boning and
Breaking Utility Y.G. 1-4 average dressing
\$46.00-\$49.50, high dressing
\$49.50-\$55.00.

Lancaster Farming, Saturday, March 19, 1994-A17

Slaughter Bulls: Y.G. 1, 1300-2050 lbs.
average dressing \$59.00-\$63.50; high
dressing \$65.25-\$66.00, high dressing/
high boning \$72.00; low dressing
\$55.50-\$59.00.

Replacement Cows: Pre-tested for
Bangs, pregnancy and age Medium and
Large Frame 1 Average, few high quality:
Heifers 850-950 lbs. 6-8 months bred
\$600.00-\$700.00/hd 6-7 years old
950-1375 lbs. 4-8 months bred
\$645.00-\$765.00/hd 9-10 years old
1175-1250 lbs. 4-7 months bred
\$575.00-\$670.00/hd 950-1050 lbs. 5-8
months bred \$475.00-\$575.00/hd.

Pairs: Medium and Large Frame 1 7-9
year old, 1050-1200 lb. cows with 150-250
lb. calves, \$725.00-\$825.00 per pair.

THIS REPORT COMPILED & PRE-
PARED BY THE OKLAHOMA CITY
LIVESTOCK & GRAIN MARKET
NEWS BRANCH OF THE USDA'S
AGRICULTURE MARKETING SER-
VICE. ROBERT MILES - TINA DOEB-
BLER TELEPHONE (405) 232-5425.

**Morrison Cove
Livestock Auction**

Martinsburg, Pa.

Monday, March 14, 1994

Report Supplied by Auction
CATTLE: 206. STEERS: CHOICE

71.50-76.10, GOOD 69.50-71.25. HEIF-
ERS: CHOICE 71.00-74.50, GOOD
68.50-70.50, COWS: UTILITY &
COMMERCIAL 45.00-51.50 CANNER
AND LOW CUTTER 38.00-45.25.

BULLOCKS: GOOD & CHOICE
60.50-63.75.

BULLS: YIELD GRADE NO. 1
57.50-63.50.

FEEDER CATTLE: STEERS
65.00-85.00, BULLS 62.00-76.00, HEIF-
ERS 58.00-73.00.

CALVES: 170. PRIME NO MARKET
TEST, CHOICE 98.00-106.00, GOOD
89.00-96.00, STANDARD 40.00-56.00,
HOLSTEIN BULLS 90-130 LBS.
112.00-130.00, HOLSTEIN HEIFERS
90-130 LBS. 145.00-205.00.

HOGS: 96. US NO. 1-2 43.50-44.75, US
NO. 1-3 41.50-42.75.

SOWS: US NO. 1-3 33.00-39.00.

BOARS 29.00-32.00.

FEEDER PIGS: 18 HEAD. US#1-3
20-50 LBS. 18.00-27.00.

SHEEP: 106. CHOICE LAMBS
80.00-105.00, GOOD LAMBS
65.00-75.00, SLAUGHTER EWES
22.00-40.00.

GOATS 18.00-60.00.

63 LOADS OF HAY. ALFALFA
86.00-110.00; TIMOTHY 60.00-91.00; 13
LOADS OF STRAW, 80.00-120.00; 2
LOADS OF FIREWOOD AT 46.00- AND
47.00.

TRI COUNTY

Confinement Systems, Inc.

**SWINE CONFINEMENT
EQUIPMENT and FACILITIES LEADER**



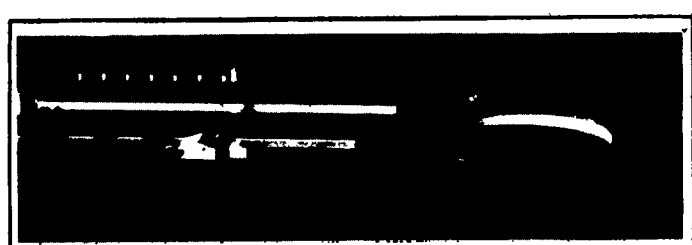
NEW FOR 94
Tri-County "DUTCH CRATE"
Pig Saver with
Complex New Sow
Feeder and Head Gate



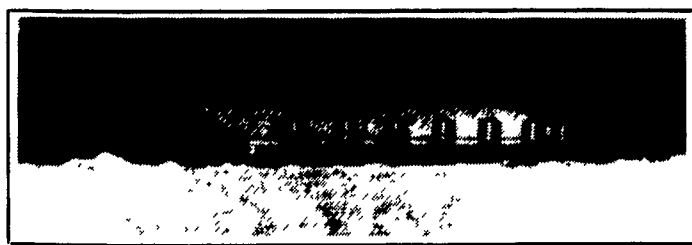
300 Sow Farrow - Feeder Pig Unit



CONFINEMENT STALLS
Developed recently in our R&D farm.
Our goals were convenience, safety
and durability. The low back and
flat top rails are easy to reach over
with no sharp edges. Stainless steel
rear legs and front feet along with
solid steel horizontal rods through
punched uprights provide the
strongest, most durable stall ever
produced by Tri-County (21"-24"
O.C. x 86")

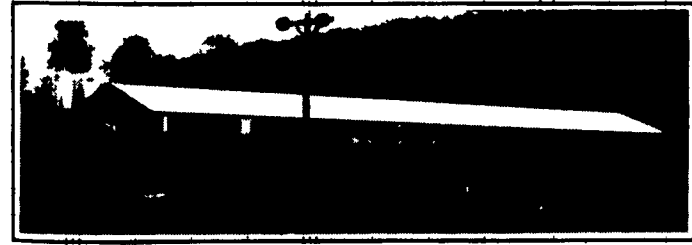
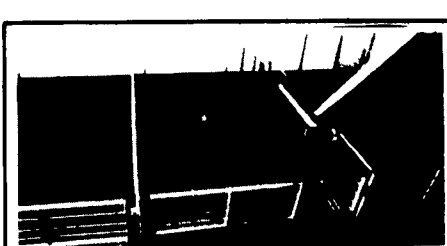


1200 Sow Farrow-Feeder Pig Unit



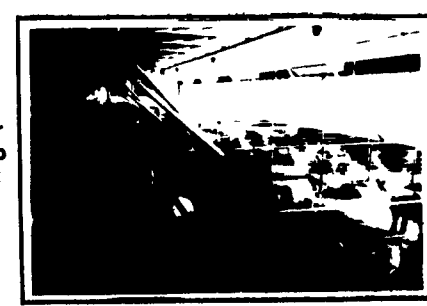
2800 HP Offsite Nursery (7 Rooms)
(Pull Plug, Preferated Ceiling Ventilated)

NURSERY PENNING
Nursery penning has been
improved by the use of an
optional solid stainless
steel panel on the front
gates which keeps walkways
clean. Stainless steel
verticals on penning
eliminate corrosion where
penning attaches to the
floor. Stainless steel drinker
pipes & mounting brackets
also increase durability.



2000 Head Finisher (2 Rooms)
(Deep Pit, Tunnel Ventilated)

FINISHING PENNING
Optional stainless steel
verticals and fasteners offer
improved durability over other
similar types of penning. Loop
and flapper latch arrangement
eliminates the use of drop
pins. Stainless steel fence
line feeders provide excellent
durability and a minimum of
waste.



**Frederick Lives-
tock
Auction**

Frederick, Md.

March 14, 1994

Report Supplied by Auction

SLAUGHTER COWS: 100
HEAD, 1.00-2.00 LOWER.
UTILITY 47.00-50.00; LOW
DRESSING 45.00-47.00;
CANNERS 42.00-46.00;
SHELLY 42.00 DOWN.

BULLS: YG#1 1300-1400
LBS. 59.00-62.75; YG#2
57.00-58.00; 1 2025 LB. AT
53.00.

FED STEERS: NONE.

FED HEIFERS: FEW
OFFERED.

VEAL CALVES: LOW
CHOICE 200-300 LBS. TO
85.00; CULLS 85-110 LBS.
45.00-55.00; 50-80 LBS.
40.00-47.00; WEAK/
ROUGH 40.00 DOWN.

FARM CALVES: HOLS-
TEIN BULLS #1 95-120
LBS. 97.00-114.00; 80-90
LBS. 60.00-85.00; HOLS-
TEIN HEIFERS #1 95-120
LBS. 155.00-192.00; #2
90-110 LBS. 100.00-150.00;
BEEF X BULLS TO 162.00;
HEIFERS TO 145.00.

BUTCHER HOGS:
US#1&3 215-260 LBS. TO
43.85; #2&3 42.00-42.75;
270-290 LBS. 37.00-40.00;
300-400 LBS. 33.00-38.00.

SOWS: 300-500 LBS.
33.00-35.00; 500-700 LBS.
38.00-42.00.

STOCK CATTLE: STERS
300-500 LBS. 81.00-84.00;
HOLSTEIN 63.00-66.00.

HEIFERS: HOLSTEINS
90.00-96.00; 300-500 LBS.
75.00-80.00.

BULLS: 300-500 LBS.
75.00-82.00.

LAMBS: 1 CHOICE 100
LBS. AT 65.50.

SHEEP: FEW 20.00-25.00.

GOATS: LARGE TO
64.00; MEDIUM TO 44.00;
KIDS 14.00-20.00.

PIGS AND SHOATS:
NONE OFFERED.

NEXT MON., MARCH 21,
SIRE POWER WILL BE
BUYING STRONG OPEN
COWS FOR A BREEDING
SCHOOL.

HATFIELD QUALITY
MEATS WEIGHT AND
GRADE PROGRAM...BASE
PRICE 46.50 AT PLANT,
PLUS BONUS ON QUAL-
ITY HOGS. BUYING STA-
TION IS HELD EVERY
TUES. AT FOUR STATES.

Let Our Experienced Staff Assist In Planning A Successful Facility For You

TRI-COUNTY

CONFINEMENT SYSTEMS INC.

608 E. Evergreen Rd., Lebanon, PA 17042

Ph. 717-274-3488

HOURS
Mon.-Fri
7:00 to 4:30,
Sat
8:00 to 12:00



**CHEESE
BURGER
Days!**