

JOHN DEERE
SINCE 1955

NEW EQUIPMENT

- JD 672 Hay Rake (Pull Type) \$ 3,490
- JD/Pequea 2 Row, Pull Type Plateless Planter \$ 5,175
- Brillion 7 Shank Chisel Plow w/Gauge Wheels \$ 1,890
- Brillion S-Tine, 12 Ft. Basket Harrow \$ 3,298
- Tufline 3 Pt., 6½ Ft. Disk Harrow \$ 850
- Herd Broadcast Spreaders/Seeders \$351 To \$ 827
- Worksaver 6 Ft. & 8 Ft. Landscape Rakes \$614 To \$ 782
- Arps 3 Pt. 7 Ft. Rear Blade \$ 549

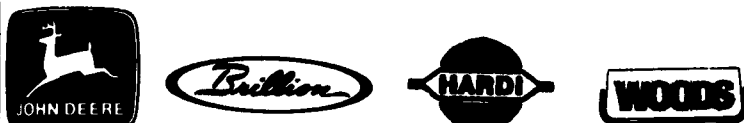
USED EQUIPMENT

- JD 3020 Gas Tractor, Power Shift, Tri., Good Cond. \$ 4,900
- JD 755 20 Hp. Diesel Tractor w/New JD 60" Mid Mower \$ 9,570
- Nice Farmall Cub w/New Woods 60" Underneath Mounted Mower \$ 3,500
- Nice 13' & 16' Grain Tables For 44 & 6600 Combines
- Allis Chalmers 16 Ft. Wingfold Disc w/Hyd. Cyl. \$ 1,875
- 3, 4 & 5 Bottom Plows From \$475 To \$875
- 7 Ft. Sickle Bar Mowers Mounted & 3 Pt. \$485 To \$ 600
- Ford 6 Ft., 3 Pt. Rear Blade \$ 350
- McKissick 12 Hp. Trailer Mounted Chipper/Shredder Demo \$ 2,390

New & Used Trailers From Snowmobile To 5-Ton w/Brakes

**Tractor Parts To Rebuild Your Engines
New JD Engines To Re-Power Your Equipment**

1974 "U" Mack Newly Rebuilt w/41 Ft. Muv-All Machinery Trailer --- \$15,000



KERMIT K. KISTLER, INC.

RT. 143 LYNNPORT, PA. 18066

610-298-2011

Hours 8-5 Sat 8-12

New & Used
Sales And
Service

Pick Up
And
Delivery!

STOUFFER BROS. INC.

1088 Lincoln Way West, Chambersburg, PA
Phone 717-263-8424

SKID LOADERS & UTILITY

- Case 580E, ROPS, Std. Hoe
- Case 580C ROPS Hoe
- Case 455 Track Loader
- Case 1835B Skid Loader
- NH L-455 Skid Loader
- Gehl 4510 Skid Loader
- JD 450 Skid Loader
- Case 850 Crawler Loader
- Case 580 Super D Cab, Hoe
- Case 1830 Skid Loader

LAWN & GARDEN

- Kubota F2100 w/5' Mower & Dump Grass Catcher
- Ariens Rider
- JD 212 w/mower & blade
- Wheelhorse 312-8 w/ Mower & Grass Catcher

MISCELLANEOUS

- Brand New— Snowblower that fits a Woods 1250 Front Mower
- JD 740 Field Cultivator-16'
- JD 10 Ft. Disk Harrow
- Little Giant Bale Elevator
- NH 304 Spreader
- Feed Easy 210 Mixer Feeder
- Vicon 300 Tedder Rake
- Oliver 62T Baler w/ Thrower
- Brillion Chisel Plow NH
- GEHL 309 Scavenger Spread Like New!
- GEHL MX95 Grinder/Mixer

TRACTORS

- David Brown 1212
- Come In—Oliver Super 55 w/Schwartz Loader
- Come In—JD 2240 w/Loader

FORAGE

- JD 3960 Harvester w/2-Row Head & Pickup
- Assortment of Gehl 99 Forage Blowers
- Gehl CB400 Harvester
- IH 550 Harvester
- NH 27 Blower
- Gehl 72 Flail Chopper

MOWER CONDITIONERS

- Hesston 6200 Self-Propelled 12 Ft.-Very Good Condition
- Vicon 281 Disc Mower Conditioner
- Gehl 880
- (1) Case 555 Mower Conditioner
- Case 650 Self-Propelled
- IH 1190 Mower Conditioner
- NH 1495 Self-Propelled
- JD 830 Self-Propelled

PLANTERS

- IH 400 Cyclo Planter
- Sales, Parts & Service For... • CASE UTILITY • GEHL • VICON • WFE • KUBOTA • HESSTON • SAME

Lancaster Farming, Saturday, March 19, 1994-D47

Nothing runs like a Deere

Brand New JD 12' Direct Cut Head for Self-Propelled Forage Harvesters
List Price \$12,860
Special \$8,500

TRACTORS

- JD 8630, 4WD, 1977 model, 30.5x32 tires, 3 pt., PTO, w/8640 updates, very nice..... Coming In
- JD 2955, 1990 model, 4 post, 1300 hours, like new..... Coming In
- JD 4240, cab & quad, 3400 hours, very nice..... Coming In
- JD 4850 MFWD, PS w/42" rubber, engine rebuilt, duals, very nice..... \$49,500
- JD 2950 MFWD w/cab & air, excellent Coming In
- IHC 1066, engine rebuilt, hydro..... Coming In
- JD 7800 MFWD, 1993 model, power shift, cab, heat, air, 42" rubber, 314 hours, like new w/warranty Coming In
- JD 3155 MFWD, 1989 model w/cab, heat, air, 2300 original hours, very nice..... Coming In
- JD 2030 dsl., nice, 2" roll guard, new engine..... \$ 9,250
- IHC 966, cab, heat, air, engine & torque rebuilt less than 2 years ago..... \$11,500

HAY EQUIPMENT

- JD 716A forage wagon w/roof & 3rd beater & JD tandem chassis \$ 5,850
- NH 28 forage blower \$ 1,350
- NI 488 Round Baler, excellent..... \$12,000
- NH 38 Flail Chopper..... \$ 3,950

COMBINES & HEADS

- JD 444 corn head, very nice..... Coming In
- JD 4420 w/23.1x26 tires, 1600 hrs., very nice..... \$18,900
- JD 4400 dsl. 1975 model 2965 hrs., rotary screen cab, heat & air, nice..... \$ 9,750
- JD 4400 dsl. 1974 model 2968 hrs., cab, heat & air, good..... \$ 8,250
- JD 4400 gas, 1972 model 2618 hrs., cab & heat \$ 6,950
- JD 6600 del. 1976 model 2901 hrs., cab, heat & air, rotary screen, very nice..... \$14,900

TILLAGE

- JD 2600 5X spring reset 18" plow, very nice..... \$ 3,950
- JD 110 disc 12', very nice \$ 2,150
- JD 970 Roller Harrow, 12', Like New..... \$ 5,950
- White 21' Wing Fold Field Cult. Spike Attach \$ 2,450

PLANTING

- JD 450 drill, DD, w/grass seed, 30 acres. like new..... \$ 5,750
- IHC 510 drill 10' w/grass seed, double disc & press wheels, excellent..... \$ 3,450

WINELAND EQUIP. INC.

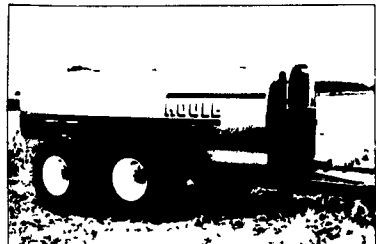
RD 2 Rte. 164 East
Martinsburg, PA 16662
Phone 814-793-2109

WE HAVE SPREADERS WITH LARGE FLOTATION TIRES IN STOCK!

HOULE

LIQUID MANURE SPREADER

5 YEAR AXLE, HUB AND UNDER CARRIAGE WARRANTY



MODEL SHOWN:
4800 US GALLONS WITH 28Lx26 FLOTATION TIRES

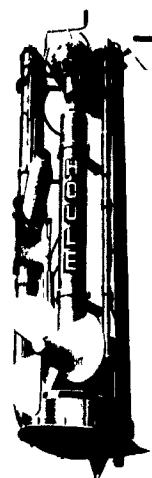
WITH FLOTATION TIRES TO MINIMIZE SOIL COMPACTION

- Exterior finish: epoxy primer and urethane paint.
- Available with inside epoxy coating including a 10 year warranty against rust out.
- Size of Tank: 2350 - 2700 - 3150 - 3600 - 4250 - 4800 and 5350 US gallons.
- We also manufacture truck mount models

- Unique shape of tank offering greater resistance to stress related tractors.
- Low profile tank for maximum viability and stability.
- "V" shape bottom for more complete clean out.
- Pump bearing housing assembly built with tapered roller bearings in oil bath protected by 3 greasable seals.

LIQUID MANURE PUMPS

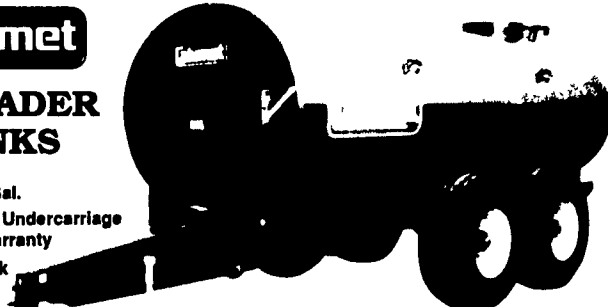
- Available in 6 versions for inground or above ground tanks as well as lagoon storage areas.
- Excels as a stationary P.T.O. driven pump to agitate and transfer manure with straw and hay
- Agitation-up to 18,000 G.P.M. with moveable propeller.



Calumet

SPREADER TANKS

- 1500-5000 Gal.
- Heavy Duty Undercarriage w/5 Year Warranty
- 10 Year Tank Warranty



Available With Rear Slinger Or Front Mount Pump

Calumet

VACUUM TANK

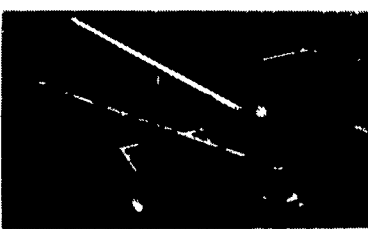


- 1500 to 5000 Gal.
- 10 Year Tank Warranty
- 4 Shank Rear Injector

- Commercial Duty Shut-Off And Vac Pump
- 28 Ply Flotation Tires

HOULE

32' TRAIL PUMP FOR DEEP LAGOON



Fastest agitation by the nozzle located over the heavily settled manure.

Constant homogenization of bottom sediments by the propeller displacing up to 18000 G.P.M.

- Hydraulic hinged trailer frame mounted on flotation tires
- Possibility to maintain propeller at crust level

- Controls hydraulically operated from tractor seat
- Horizontal nozzle operating radius: 330"
- Vertical nozzle use: 60"
- Horizontal pump allowing to pump more slurry

- Filling pipe with standard tripod or with front tractor mounted stand for faster set up
- Recommended HP: 70 to 120 HP on 540 RPM — 150 H.P. minimum on 1000 RPM

2 FARM EQUIPMENT WANTED

FOR SALE: Winco generator, 18,000 watt, 115-230V, \$1000 w/out running gear.
WANTED 18" auger for Danuser post hole digger 717-667-3066

Ironage potato planter, 4 row, good fert., belts with gandy applicators, buy whole or parts if enough interest 609-259-2979 Monouth

JD side dresser(s) to fit JD model 40T serial #76177 or JD A serial #589235. Unit(s) must be in excellent condition (717)235-4989

Narrow row snapper head for 1890 or 1895 NH, sp harvester 814-942-0288

WANTED Allis Chalmers D17 engine running and in good condition or whole tractor (610)867-0674 (610)867-3925

WANTED Good Condition 8' Vertical Pit Pump, 6-8" discharge, 10' Brillion Seeder 717/665-7399

WANTED John Deere 500 backhoe loader for parts, any condition, running or not John Deere 3020 for parts Leave message (717)586-0145.

WANTED Loader for Farmall 504, 460 (301)371-5964

WANTED Oliver 660 or Super 660, engine not important, need sheet metal 814/669-9332

WANTED Tractor/loader, w/2/3 yd bucket, 4WD, 3pt, PTO, 40-50HP Prefer Kubota, JD Will consider Gehl skid loader 908-446-7888 After 9PM

WANTED Tub grinder suitable for round bales and newspaper 717-432-4822

WANTED:

USED FORD & KUBOTA TRACTORS

Call 717-949-2000
Daytime

TRADE-IN'S WELCOME
RD 3, Box 84
Mifflinburg, PA
17844

SNOOK'S EQUIPMENT

Your Complete Liquid Manure Equipment Dealer For 21 Years!

Daily U.P.S. Parts Service
717-966-2736
Ask For Ernest or Dean