

**35 TRUCKS & TRAILERS**

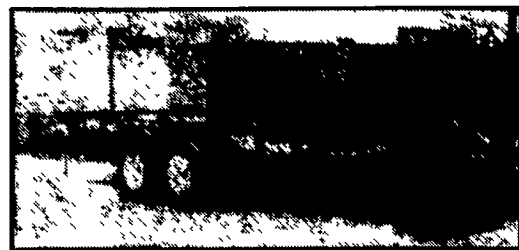
**HOSTETLERS IS GETTING READY FOR SPRING WITH LOWBOY AND UTILITY TRAILERS**

12 Ton Econoline Lowboy "Backhoe Pro" 18' Flat Deck with 5' Dovetail, Electric Brakes All Wheels, 8 Bolt Wheels, Spare Wheel And Tire, Freight to PA  
**\$5,284**



14' Skid Loader Trailer by Hudson 10,000# GVW, with Electric Brakes, Adjustable Hitch, Standup Ramps  
**\$2,195**

10,000# GVW International lowboy 16' Flat with 2' Dovetail Stand Up Ramps, Electric Brakes  
**\$2,995**



16' International Utility, 7000# GVW, Electric Brakes, Split Drop Wire Mesh Ramp Gate  
**\$1,695**

All Trailers PA Legal and Inspected  
Other Trailers Available, Call For More Details



**Hostetler Truck Bodies & Trailers**  
Rt. 322 Milroy, PA 17063  
**717-667-3921**

**USED TRUCKS**



88 Ford F-250 XLT Lariat 7.3 Diesel, Auto, PS, PB, AC, Cruise, Tilt Wheel, AM & FM Stereo, Dual Tank, Two Tone Brown & Tan, 57,000 Miles.  
**\$10,900.00**



92 Chevrolet 2500 Scottsdale, 350 F.I., AT, AC, AM-FM, 8600 GVW, 24,000 Miles, Maroon  
**\$14,900.00**

Financing Available

**MARTIN'S AUTO SALES**  
1025 W. Main St., New Holland, PA 17557  
**(717) 656-6621**



**AUTO BODY & SALES**

1701 E Division Hwy  
New Holland PA • 717-355-0611

Specializing in Rebuilt Collision Damage Vehicles



91 S-10 Longbed 4.3FI at 29,000 mi  
**\$3,400**



89 Shortbed 2.8FI 5Spd. 4x4  
**\$2,800**



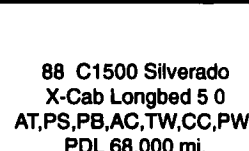
88 S-10 Shortbed 2.5FI-5-sp no frame damage, w/some parts 70,000 mi  
**\$1,875**



93 S-10 Longbed 4.3FI PS-PB-Cass. 8,198 mi  
**\$3,900**



91 Dakota Shortbed 3.9FI, AT 66,000 mi Good Title  
**\$2,800**



88 C1500 Silverado X-Cab Longbed 5.0 AT,PS,PB,AC,TW,CC,PW, PDL 68,000 mi. No Frame Damage  
**\$4,200**

Nicest Pre Owned Trucks Anywhere!

RTE. 422, WEST LEBANON, PA

(Across From Lebanon Valley Mall)



717-274-2000

FAX

717-274-2717

Business Hours Mon-Thurs 9-9 Fri. & Sat. 9-4

**THIS IS JUST A SMALL PORTION OF OUR HUGE INVENTORY**



85 Ford F-250 4x4 Diesel, 4 Spd., Current Inspection  
**\$5,500**



4x4 Super Cab Dually 91 GMC Sierra Classic All Muscle, 454 i.l., Auto A/C, All Power Equipment, Gooseneck & Class 3 Hitch



Flatbed Dump 87 Ford F-350 460 V8, 5 Sp., O/D, 58,000 Miles, Dual Tanks, 10 Ft. Body



Diesel Crew Cab 86 Ford F-350 XLT Diesel, AT, AC, Running Boards, Ready To Go



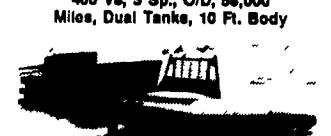
Diesel 15 Passenger Only 7,000 Miles, Like New, 7.3 Diesel, AT, OD, Frt. & Rear Heater & AC, Must See & Drive



91 Dodge LE Dually Cummins Turbo, Auto, A/C, 38,000 Miles  
**\$16,900**



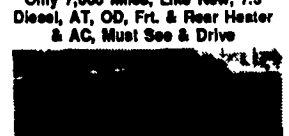
Diesel Dually 89 Chevy 3500 Only 42,000 Miles, 6.2 Diesel, Auto, AC, Gooseneck & Bumper Hitch, Real Strong



For Sale FLATBEDS



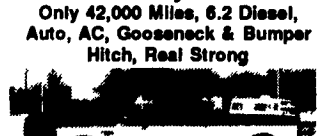
4 Door 4x4 91 Ford F-350 XLT Lariat Nice Truck, Only 32,000 Miles, 7.3 Diesel, 5 Sp. O/D, Tow Pkg.



4 Wheel Drive Crew Cab Dually 86 Ford F-350 The Nicest Anywhere, 7.3 Diesel, Auto, A/C, Tow Pkg., 40,000 Miles



Cummins Turbo 4x4 93 Dodge 250 LE Like New Only 10,500 Miles, 5 SP, AC, Factory Warranty, Heavy Duty 8510 GVW



Turbo Diesel 93 Ford F-250 Super Cab 4x4 Only 300 Miles, Like New, Factory Turbo, 5 Sp, A/C, All Options, All New Factory Warranty



Cummins 4x4 Super Cab 93 Dodge LE 250 Turbo Diesel, Auto, Loaded, H.D. 8510 GVW, Tow Pkg., Don't Miss It



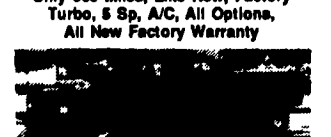
Cummins Diesel 91 Dodge 1/2 Ton A Beauty, 43,000 Miles, Auto, Overdrive, A/C, LE Pkg., All Options



Stake Dump 89 Ford F Super Duty 7.3 Diesel, 5 Sp., 12 Ft. Body, New Inspection, 14,500 GVW



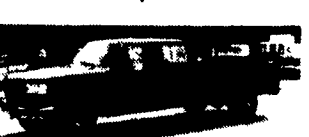
1 Ton 4x4 92 GMC 3500 SLX 454 i.l., auto overdrive, A/C, Tow Pkg., Pool 4:10 Axle, a Beauty 24,000 Miles, Heavy 9200 GVW



90 Ford F-350 Crew Cab Dually Nice Clean, 460 i.l. Auto, A/C, Drives & Runs Great  
**\$12,900**



460 Super Cab 92 Ford F-250 XLT 460 i.l. 5 sp. Overdrive, A/C, Dual Tanks, Limited Slip 4:10 Axle



4 Door Diesel 92 Ford F-350 XLT Lariat 7.3, 5 Speed, AC, Very Strong, Ready To Pull



Diesel Supercab 92 Ford F-250 XLT Lariat, 7.3 Diesel, AT, AC, Captain Chairs, 8800 GVW



Diesel Crew Cab, 91 Chevy Silverado, 8.2 Diesel AT, O/D, A/C, 4:10 Axle, Tow Pkg.



86 Ford F-350 Super Cab Dually A Deal For You Excellent Tow Machine, 460 V8, Auto, AC, Dual Tanks  
**\$10,900**



1 Ton 4x4 90 Ford F-350 XLT 7.3 Diesel, AT, AC, Dual Tanks, Tow Pkg., 82,000



Stake Dump 88 Ford F-350 40,000 Original Miles, 11,000 GVW, 12 Ft. Body, 460 i.l., 5 Spd.



Work Horse 86 Ford F-250 H.D. 8800 GVW, 351 Auto, A/C, Dual Tanks, 68,000 Original Miles