

National Grain Market

St. Joseph, Mo.

Wednesday, March 9, 1994

DAILY NATIONAL GRAIN SUMMARY FAVORABLE GROWING WEATHER IN WINTER WHEAT AREAS AND CONTINUED SLACK EXPORT DEMAND PUSHED WHEAT PRICES MODERATELY LOWER. CORN AND SOYBEAN PRICES, HOWEVER, REGAINED SOME OF TUESDAY'S LOSSES AS TRADERS ANTICIPATE USDA'S STOCKS REPORT DUE TOMORROW AND LACK OF SUBSTANTIAL EXPORT INTEREST SEEN IN NEAR FUTURE. WHEAT 3 TO 6 CENTS LOWER. CORN 1 TO 3 CENTS HIGHER. SORGHUM 1 TO 5 CENTS HIGHER. SOYBEANS 6 TO 8 CENTS HIGHER. SOUTH PLAINS RECEIVING MUCH NEEDED MOISTURE THIS WEEK, PRESSURED WHEAT PRICES. FEW EXPORT SALES LIMITED LOSSES BUT DISMAL OUTLOOK FOR WHEAT ORDERS, ESPECIALLY FROM RUSSIA AND POSSIBLY CHINA, DROVE PRICES LOWER. SLIGHT INCREASES IN CORN AND SOYBEAN PRICES REFLECT ANTICIPATION FOR A BULLISH STOCK REPORT TOMORROW. SOME LIGHT FARMER SELLING WAS ALSO NOTED. REPORTS OF LOWER SOYBEAN YIELDS IN BRAZIL ADDED SUPPORT TO PRICES.

EXPORT NEWS: USDA ACCEPTED ONE BID TO SELL 16,915 TONNES HARD RED WINTER WHEAT TO CYPRUS UNDER EEP FOR MAR/APR SHIPMENT.

DATE CHANGE YEAR AGO TRUCK BIDS: 03/09/94 03/08/94 03/10/93 WHEAT: KANSAS CITY 3.61-3.62 DN 3 3.55-3.57 MINNEAPOLIS 4.62 1/2 DN 4

1/2 3.79 1/4 PORTLAND 3.39-3.42 DN 6-5 3.83-3.85 ST. LOUIS 3.31-3.38 DN 4 3.79-3.82.

CORN, U.S. NO. 2 YELLOW: KANSAS CITY 2.82-2.84 UP 1-2 2.19-2.21 MINNEAPOLIS 2.71 UP 3/4 2.08 1/4 SO. IOWA 2.82-2.84 UP 3-2 2.22-2.25 OMAHA 2.69-2.72 UP 1-2 2.11-2.12.

SOYBEANS, NO. 1 YELLOW: KANSAS CITY 6.84-6.86 UP 8 5.76-5.78 MINNEAPOLIS 6.63 1/2 UP 8 5.61 1/4 SO. IOWA 6.76-6.80 UP 6-8 5.78-5.85 C. ILL. PROCESSORS 6.80 1/2-6.85 1/2 UP 8 5.82 1/4-5.89 1/4.

*TRUCK BIDS FOR KANSAS CITY, US NO. 1 HARD RED WINTER WHEAT, ORDINARY PROTEIN. MINNEAPOLIS, US NO. 1 DARK NORTHERN SPRING WHEAT, 14% PROTEIN. PORTLAND, NO. 1 SOFT WHITE WHEAT, ST. LOUIS, NO. 2 SOFT RED WINTER WHEAT.

FUTURES CLOSE: KANSAS CITY (MAY) WHEAT 3.39 1/2 DN 2 3.18 MAY MINNEAPOLIS (MAY) WHEAT 3.42 1/2 DN 4 1/2 3.24 1/4 MAY CHICAGO (MAY) WHEAT 3.36 DN 3 1/4 3.27 MAY (MAY) CORN 2.84 UP 3/4 2.22 1/4 MAY (MAY) SOYBEANS 6.75 1/2 UP 8 5.83 1/4 MAY.

EXPORT: BARGE OR RAIL, PORT OF NEW ORLEANS OR NORTH TEXAS GULF. NO. 1 HARD RED WINTER WHEAT ORDINARY PROTEIN 3.86 1/2-3.88 1/2 DN 4-2 3.93-3.94 NO. 2 SOFT RED WINTER WHEAT 3.62-3.71 DN 3 1/4-NC 4.01-4.02 NO. 2 YELLOW CORN 3.00-3.01 1/2 NC-UP 1/2 2.47-2.47 1/4 NO. 2 YELLOW SORGHUM RAIL 5.21 UP 1 BARGE 5.14 UP 1 4.29-4.29 NO. 2 YELLOW SOYBEANS 6.93 1/2-7.03 NC-UP 8 6.08-6.10 BIRD.

THIS REPORT A SERVICE OF U.S. DEPARTMENT OF AGRICULTURE, LIVESTOCK AND GRAIN MARKET NEWS, ST. JOSEPH, MISSOURI.

New England Shell Eggs

Wednesday, March 9, 1994

NEW ENGLAND: Prices were trending lower on brown jumbos; other sizes remained unchanged. Trade sentiment was generally steady. Demand was usually fair throughout the region, best where featured. Most dealers reported that business has slowed down from last week. Supplies of brown eggs were moderate to heavy, with jumbos on the long side; white eggs continued to be tight in some areas.

PRICES PAID TO PRODUCERS, CASES EXCHANGED, GRADE YIELD BASIS, BROWN EGGS LOOSE, AT FARM, CENTS PER DOZEN RANGE JUMBO .76-.79, EXTRA LARGE .75-.78, LARGE .71-.74, MEDIUM .52-.55, SMALL .26-.29.

BOSTON: PRICES TO RETAILERS, SALES TO VOLUME BUYERS, USDA GRADE A AND GRADE A, BROWN EGGS IN CARTONS, DELIVERED STORE DOOR, CENTS PER DOZEN RANGE EXTRA LARGE .94-.96, LARGE .90-.92, MEDIUM .71-.73.

Diffenbach Auction Center

New Holland, Pa.
Monday, March 7, 1994
Report Supplied by Auction

TOTAL LOADS: 248.
ALFALFA: 112.00-185.00.
MIXED HAY: 102.00-165.00.
TIMOTHY: 112.00-170.00.
CLOVER: 110.00-140.00.
ORCHARD GRASS: 120.00-135.00.
STRAW: 150.00-210.00.
EAR CORN: 105.00-125.00.
OATS: 2.35-2.50.
FIREWOOD: 4 LOADS 55.00-92.00.

Lancaster Farming, Saturday, March 12, 1994-A5

Hackettstown Poultry & Egg

Hackettstown, N.J.

Report Supplied by Auction

Tuesday, March 8, 1994

Report Supplied by Auction

HEAVY FOWL .80-1.45.
BANTAMS 1.10-1.70.
BUNNIES EACH 4.25-5.00.
ROOSTERS .70-1.90.
DUCKS 1.00-1.05.
RABBITS 1.00-1.75.
PIGBONS 2.70-3.40.
GUINEAS 1.20.

WHITE EGGS: EXTRA LARGE & JUMBO .63-.79; LARGE .66-.73; MEDIUMS .62-.65.

BROWN EGGS: EXTRA LARGE & JUMBO .65-.80; LARGE .61-.71.

Philadelphia Eggs

Thursday, March 10, 1994

Report Supplied by USDA

MARKET COMMENT: TRADE SENTIMENT CONTINUED MOSTLY STEADY. DEMAND WAS IRREGULAR, BEST INTO RETAIL CHANNELS WITH FEATURES. SUPPLIES WERE GENERALLY ADEQUATE OR AVAILABLE. A EXTRA LARGE .72-.74, A LARGE .70-.72, A MEDIUM .63-.66.

Dewart Hay

Dewart, Pa.

Monday, March 7, 1994

Report Supplied by Auction
28 LOADS OF HAY, 80.00-160.00.
STRAW: 9 LOADS, 90.00-117.50.
WOOD: 9 LOADS, 41.00-92.00 LOAD.
CORN: 2 LOADS, 97.00 AND 100.00.
OATS: 1.80 AND 1.85 BU.



North end of Leesport, PA Turn East off Route 61

"WHERE FRIENDS MEET"

BERKS COUNTY'S ONLY WEEKLY
CATTLE & SWINE AUCTION —
WEDNESDAY AT 1 P.M.



FARMER'S MARKET Every Wednesday,
9 AM TO 8 PM

Garden Fresh Fruits & Vegetables - Bakery Fresh Cakes, Pies and Buns - Butcher Fresh Meats & Cheese - Sporting Goods - Clothing - Furniture - Jewelry - Used Items & Collectibles.

PHONE: 215-926-1307 BILL WEIST & WOODY WEIST, MGRS.

HESS MILLS

SUPER COW 24

BRINGS OUT THE BEST
IN YOUR COWS!



- ☑ Cows Love To Eat It
- ☑ Cows Milk Great On It
- ☑ Cow's Body Condition Improves
- ☑ Reproduction Improves

GIVE US A CALL AND
WE WILL RUN YOU A PROGRAM

HESS MILLS



PURINA CHOWS

6 S Vintage Rd., Paradise, PA 17562

(717) 442-4183 (717) 768-3301 800-635-3592

™ Trademark of Purina Mills

* Registered trademark of Falston Purina Company

NEED TO CUT THE FEED BILL?

NEW DAIRY BLEND COMPLETE AND CONCENTRATE FEEDS

COMPLETE FEEDS

#79516
Dairy Blend Flakes
16% All Natural
\$166²⁴

#79518
Dairy Blend Flakes
18% All Natural
\$175²²

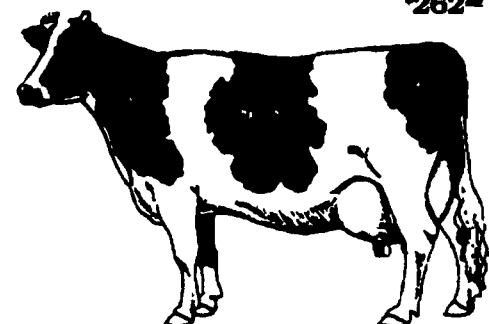
#79520
Dairy Blend Flakes
20% All Natural
\$183²²

CONCENTRATE FEEDS

#51232
32% All Natural
Protein Pellets
\$224²⁴

#51238
38% All Natural
Protein Pellets
\$250²²

#50734
34% All Natural
Protein Pellets
w/Steam Flaked Soybeans
\$262²²



Bulk Feed Available in 1 to 24 Ton Loads

Feed prices for Week of March 14 and Subject to Change Weekly with Grain Market
Includes 8 ton volume discount and cash discount of 2% due 15th following month. Deduct additional \$3.00 per ton if paid in 10 days

PENNSYLVANIA CUSTOMER SERVICE DEPARTMENT OFFICE 2400 N. 10TH ST. LEBANON, PA 17042-1000 • TEL: 717-652-1000 • FAX: 717-652-1001



pennfield feeds