

1 FARM EQUIPMENT

NEW EQUIPMENT IN STOCK

CALL FOR DETAILS & PRICES ON THE NEW EQUIPMENT YOU NEED!

Case IH 2250 Loader w/Mounts For 85 & 95 Series Tractors
 Case IH 415 Packer Mulcher, 10'1" Demo — \$4,950!
 Case IH 395, 495, and 695 Tractors - 2WD - call for details!

Case IH 1140 Compact Diesel, 2WD, Gear, Turf Tires } **SPECIAL CLEARANCE DEAL!**

Case IH 1845C Skid Loader (Demo)
 Case IH 1845C Loader
 MAXXUM TRACTOR... 5130, 4WD,
 Cab.....Rent/Lease Or Rent/Buy

Case IH 1063 6 Row Narrow Corn Head
 Case IH 3900 18'7" Disk Harrow, 7 1/2" Spacing..... OLD PRICE!
 Case IH 3800 12' Disk Harrow, 9" Spacing
 Case IH 3800 11 1/2' Disk Harrow, 7 1/2" Spacing
 Case IH 496 Disk Harrow, 24' 10", 9" Spacing
 Demo! Must Sell!!!

Case IH 181 Min. Till Rotary Hoe
 Case IH 900 6-Row ~~SOLD~~ Pter, Liq. or Dry
 Case IH 183 4 & 6 Row Cultivator

New Haying Equipment
 Case IH 8309 Disc Mower Conditioner
 Case IH 8340 Mower Conditioner
 Case IH 8520 Baler
 Case IH 8530 Baler
 Case IH ~~SOLD~~ Blower

Cash Discounts
 or
 Low Rate Financing
 on
 Most Equipment

ERB & HENRY EQUIP., INC.

New Berlinville, PA
 One Mile North of Boyertown
610-367-2169
FAX: 610-367-6715



TRACTOR REPAIRS

We Have Experienced Ford Tractor Mechanics That Specialize In Ford Tractor Repairs
 - We Specialize In Ford Tractors And Have Since 1921
 - Call For Quotes

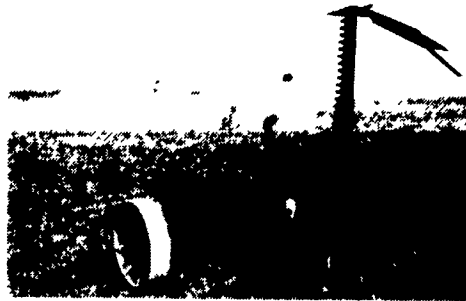
717-949-2000



KELLER BROS.

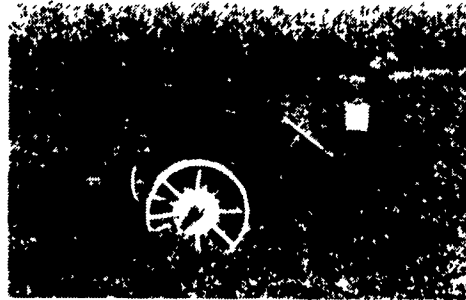
RD 7 Box 405
 LEBANON, PA

The I & J Cultivator



MOWERS: 3 point or trailing features: guards & blade, move back and forth cuts like a scissors, virtually no plugging.

4% OFF ALL CULTIVATORS BOUGHT UP TO 3/31/94



DEEP TILL SLITTER: Available in 1 or 2 shanks, optional hydraulics. On Sale Now

Corn binders: get your orders in by June 1, 1994

We Also Carry Flex Tine Harrow

I & J MANUFACTURING
 Dept. LF, 5302 Amish Road • Gap, PA 17527

717-442-9451

(Call Between 8:45-9:00 A.M. Weekday Ask For Jake)

OPEN HOUSE 3-26-94

Int 5088 w/cab, 3688 w/Cab, 3388 w/Cab, (2) 1486 w/Cab, 1466 w/Cab, (2) 1086 w/Cab; (2) 1066 w/Cab, 1066 Black Stripe, (2) 986 w/Cab, 966 w/cab, 966, 884, 856 w/loader, 856, 806, 786, 784, 766, 766 w/Cab, 706, (3) 656, 684, 585 w/loader, 560, 460 w/picker, 400, Cub w/ mower, H

JD 4430 w/cab, 4000, 4040, (2) 4020, 3020, 2940, 2550 4wd w/loader, 2440, 430, Ford 861 w/loader, AC D19, AC XT 190 w/cab, 200, JD 410 Backhoe Loader, JD 550 dozer, JD 675 B skid steer

Combines: JD 6600, (2) JD 3300, JD 40, MF 750, MF 550, 510, IH 205

Balers: Round (2) NH 855, (2) NH 852, (3) NH 851, NH 849, NH 848, NH 847, (2) JD 330, (2) JD 510, NI 456, Hesston 5500

Balers: Square NH 278 w/thrower, NH 275 w/thrower, NH 273 w/thrower, NH 320 w/thrower

Planters Int 800 air 4R, (2) IH 800 4R, IH 900 4R air, IH 56, IH FH 2R, IH 3 pt 2R, JD 7000 4R, JD 1240 4R, JD 495 4R, MF 3 pt 2R

Drills Int 5300, (3) Int 510, JD 8250

Plows (2) 5 bottom, discs, chisel plows, Farmco feeders, Hurst trailers, and all other types of farm equipment

Misc. (3) NH 489 haybines, Grimm hay tedder, Kuhn hay tedder,

From **Leader's Farm Equipment** Everett, PA **814-652-2809**

2 FARM EQUIPMENT WANTED

FOR SALE: Winco generator, 18,000 watt, 115-230V, \$1000 w/out running gear. **WANTED:** 18" auger for Danuser post hole digger. 717-667-3066.

Ironage potato planter, 4 row, good fert., belts with gandy applicators, buy whole or parts if enough interest. 609-259-2979 Monouth.

Steel Wheels for 13006 Deutz 4WD or 125 HP Tractor. (315)536-8718.

WANTED: Allis Chalmers D17 engine running and in good condition or whole tractor. (610)867-0674 (610)867-3925.

WANTED: Good Condition 8" Vertical Pit Pump, 6-8" discharge; 10" Brillion Seeder. 717/665-7399.

WANTED: Loader for Farm all 504, 460. (301)371-5964.

WANTED: Oliver 660 or Super 660, engine not important, need sheet metal. 814/669-9332.

WANTED: Tractor/loader, w/2/3 yd. bucket, 4WD, 3pt, PTO, 40-50HP. Prefer Kubota, JD. Will consider Gehl skidloader. 908-446-7888 After 9PM

WANTED: Used JD 535 round baler. 302/398-8754.

Want: Good used bedding chopper suitable for chopping newspaper. (717)694-3550.

Best Buys in Used Equipment

TRACTORS:
 Farmall Cub Lowboy w/Woods L59 Rotary Mower, Late Model 12V
 (2) 154 Low Boy w/C3 Mower
 IH 460 Diesel Triycle - Nice Shape!
 IH 584D Tractor
 IH 140 w/8 Ft. Belly Mower
 Int. 3414D Loader w/Cab, Twp. Tractor
 Ford 2110 Gas w/Turf Tires
 Case 2590, 2WD, Cab, Air, 180 HP
 JD 301D Utility with Mid Mounted Hyd. Sickle Bar Mower - Real nice... Low Hrs.
 JD 855 Hydro 4WD PS, w/50" Mower Deck (Coming In-Like New)
 Kubota M4050, 2WD, 45 PTO Hp.
 Farmall M
 Farmall H w/Bucksaw And Woods 5 Ft. Belly Mower

HAY & FORAGE:
 IH 56 Blower
 IH 440 Baler w/Thrower
 IH 990, 9 Ft. Mower Conditioner
 Badger Forage Box w/Tandem Axle
 Hesston 4500 Wire Baler w/Thrower
 Ford 530 Baler w/Thrower

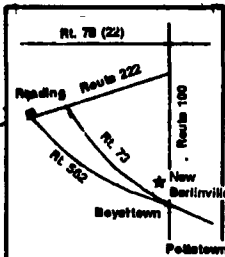
OUTDOOR POWER EQUIP.-
 Good Selection Of Older Cub Cadet Lawn & Garden Tractors — All Makes And Models!
 1987 Cub Cadet, Model 1872 18HP, w/50" Deck
 Cub Cadet 1450 & 1650 With Decks!
 Toro 7 Gang Pull-Type Golf Course Mower
 (1) National 3-Gang Triplex, 1987 Model, 68" Cut- Was \$2,000 - Now \$1,800

TILLAGE:
 JD 12 Ft. Transport Disk
 Case IH 475 Cushion Gang Disk Harrow, 13'5, 9" Spacing

COMBINES:
 MF 1144 4-Row Wide CH, Ex. Cond.
 744 Wide Cornhead for 715, Ex. Cond.
 IH 810 15' Grain Head w/Hart Carter Floating Cutter Bar
 24.5x34 Rice Tires & Rims For IH 1420 Or 1620

MISCELLANEOUS:
 FMC DO-25 300 Gal. w/Gun & Hose Reel, Trailing Model, 2 Cyl. Kohler Engine, Like New
 Century 250 Gal. Trailing Sprayer
 National 3-Gang Triplex 84" Cut, Kohler Engine, Elec. Start
 Danuser 2 Pt. Fast Hitch
 Post Hole Digger, Nice Shape!
 HS 105 Woods Hyd. 3 pt. Hitch Ditch Bank Mower
 Morbark Busy Beaver Disk Chipper Trailing Model With Engine, 5" Capacity, Nice Shape!
 FMC 800 Gal. Trailing Sprayer w/Boom Pleton Pump
 4-Ton Tandem Axle Hydraulic Dump Trailer
 New Meyers Snow Plows & Mounts For Trucks & Tractors

We Ship UPS Daily!



ERB & HENRY EQUIP., INC.

New Berlinville, PA
 One Mile North of Boyertown
610-367-2169
FAX: 610-367-6715



WANTED:

USED FORD & KUBOTA TRACTORS

Call 717-949-2000 Daytime

NOTICE!

Silos and Unloaders
 #3 and
 Construction Equipment
 #1a.

Appear in Section C Pages 8 to 13