

SINCE 1936

# M.M. WEAVER & SONS, INC.



MASSEY FERGUSON

Tractors And Combines

Leola, PA 17540 Phone: (717) 656-2321

Located: 4 miles West of New Holland on Rt. 23, 1 1/2 miles Northeast of Leola on the No. Groffdale Rd., 1 mile on the right, opposite Groffdale Mennonite Church.

Discover  
**CLAAS**  
THE HARVESTING SPECIALIST

**ANNUAL PUBLIC AUCTION**  
Coming March 21, 1994, Watch For Details

**USED COMBINES**

1982 MF 850 With 15 Ft. Floating Head .....	\$23,000
1982 MF 860 With 15 Ft. Floating Head .....	\$22,000
1981 MF 860 With 15 Ft. Floating Head .....	\$22,000
1980 MF 550 With 13 Ft. Floating Head .....	\$21,000
1979 MF 550 With 13 Ft. Floating Head .....	\$18,000
1978 MF 540 With 13 Ft. Floating Head .....	\$11,500
NI 710 With 713 13 Ft. Grain Head .....	\$800
NI 843 N 3 Row 30" Quick-Tach Corn Head.....	\$1,200

**USED TRACTORS**

MF 3660-4, 140 HP, 814 Hrs. ....	\$52,000
MF 3525-2, 110 HP, 2882 Hrs. ....	\$18,500
MF 3090, Cab, 95 HP, 1170 Hrs. ....	\$21,500
MF 390 Tractor, 70 HP, 750 Hrs. ....	\$16,000
MF 2745, 140 HP 2000 Hrs. ....	\$9,500
MF 1155, 140 HP .....	\$8,000
MF 1085, 82 HP, 3980 Hrs. ....	\$7,500
MF 1080, 82 HP, 5516 Hrs. ....	\$5,000
MF 1030-2, 26 HP, 232 Hrs. ....	\$6,700
MF 1035-2, 31 HP, 185 Hrs. ....	\$7,600
MF 1045-2, 35 HP, 262 Hrs. ....	\$7,900
MF 30E With Loader, 668 Hrs. ....	\$19,500
MF 265, 65 HP, Diesel .....	\$9,000
MF 1105 105 HP .....	\$10,500
IH 350 Tractor, 42 HP, Rebuilt.....	\$2,900
IH 424, Gas .....	\$2,500

Demo - MF 1035-4, 31 HP .....	\$11,800
New - 1016 Loader Installed .....	\$2,900
	\$14,700

**HAY EQUIPMENT**

Demo Vicon 1511E 5x6 Round Baler .....	\$9,900
Used Vicon 1211 E 4x5 Round Baler .....	\$6,500
Demo Vicon KM321 Disc Mower Conditioner.....	\$12,500
Demo Vicon 216 7 Ft. Disc Mower .....	\$3,900
Vicon KM240 Discbine, Parts .....	\$900
Vicon RS740 Tedder 24 Ft. ....	\$4,500
Vicon KM281 Mower Conditioner .....	\$6,500
Vicon KM321 Mower Conditioner .....	\$7,500
MF 128 Baler .....	\$2,200
New Holland #853 Round Baler .....	
Teagle Bale Shredder .....	\$1,900

**PLOWS & TILLAGE**

JD 10 Ft. Disc .....	\$800
M&W 5 Tooth V-Ripper .....	\$5,700
Vicon 18 Ft. Field Cultivator .....	\$6,900
Yetter 3 Pt. Rotary Hoe .....	\$2,695
Pequea 6 Row Cultivator .....	\$2,100

**MANURE & FEED MIXER EQUIPMENT**

SFM Liquid Spreader, 1100 Gal. ....	\$3,900
IH 595 Tandem Spreaders .....	\$3,900
NH 795 Tandem Spreader .....	

**ROTARY CUTTERS & EQUIPMENT**

Hinicker Brady 12 Ft. 1000 RPM Shredder.....	\$5,500
Woods 60 HP Rated 8 Ft. 3 Pt. Blade .....	\$650
7 Ft. 3 Pt. Scraper Blade .....	\$305
Brady 7 Ft. Flail Chopper .....	\$2,500
Danuser 3 Pt. Post Hole Digger .....	\$680
Shaver 3 Pt. Hydraulic Post Drive .....	\$2,500

**WORK WANTED**  
**\$8.00 / day**  
Will mow, haul, till, load, you name it.  
Long, hard hours welcome. Efficient. Reliable.  
Thousands of references available.



**Hire a new MF 240 for only \$240/month.**

Get the unsurpassed performance and reliability of an efficient, 41 hp\* Perkins diesel engine, plus the unequalled implement control of the Ferguson linkage system. Add in our outstanding service and parts support, and you've got value that's second to none.

Stop in today to see how leasing one of the most popular and respected tractors in the market can keep you and your money working smarter.

\*Manufacturer's rated PTO hp.

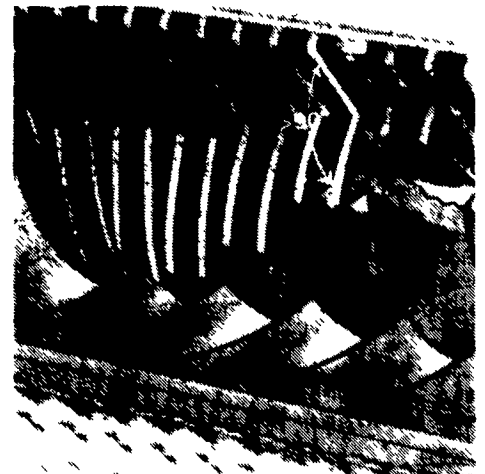
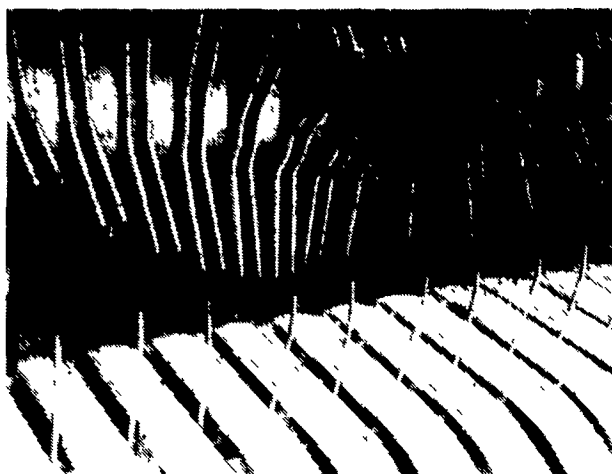
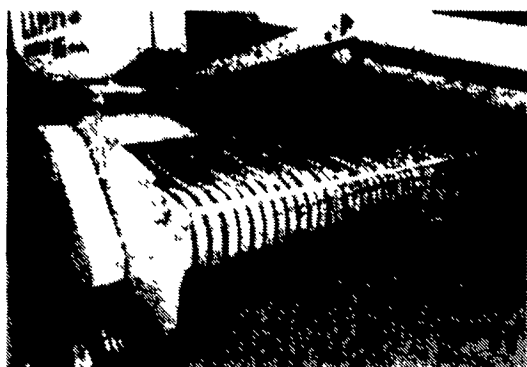


MASSEY FERGUSON

Massey Ferguson products are distributed throughout North America exclusively by AGCO Corporation, Norcross, GA

LEASE PAYMENT EXAMPLE is for an MF 240 tractor with base equipment and includes 3 advance payments of \$240, plus 33 payments of \$240 per month. Any taxes, insurance options or dealer charges are additional. Purchase option for \$7,260.85 may be available at lease end. Lessee pays for maintenance, repairs and excessive wear and tear. At the end of the lease, the Lessee is liable for any hours of use in excess of 200 hours per year (at the rate of \$0.14 per PTO horsepower hour.)

**The New CLAAS ROTOCUT SILAGE BALER**  
Cuts Your Crop As It Is Forced Through A Series Of Knives.



**The Benefits:**

- Hard to feed crops are aggressively fed right into this baler
- Now you can cut and bale rye, barley and oats at boot stage.
- Bales fall apart - you can throw them down a hay hole and feed them with a fork.