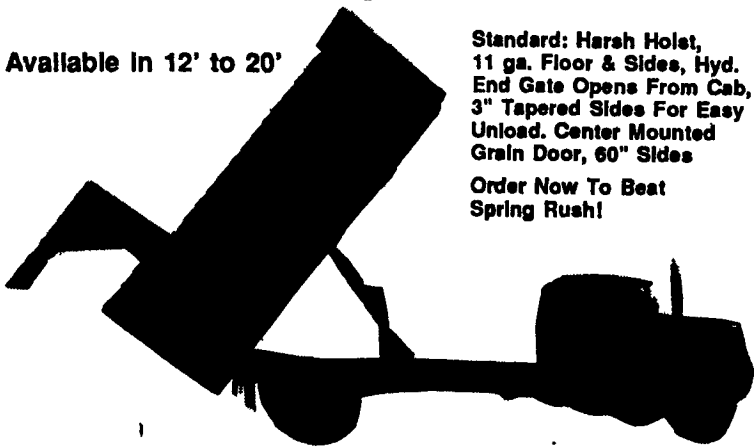


Multi-Use Silage & Grain Body

Available in 12' to 20'



Standard: Harsh Hoist, 11 ga. Floor & Sides, Hyd. End Gate Opens From Cab, 3" Tapered Sides For Easy Unload. Center Mounted Grain Door, 60" Sides

Order Now To Beat Spring Rush!

Manufactured In Franklin County By

Al's Truck Repair

5141 Roxbury Rd., Shippensburg, PA 17257

717-530-8998

Dealer Inquiries Invited

Martin Tractor

866 Greenspring Rd.
Newville, PA 17241

Used Tractors

- IH 544 w/ldr. \$6,000 • White 4-150 \$7,500
- Case 1370 \$7,500 • Case DC (Foot Clutch) \$950 • IH 666 \$5,500 • Ford TW10 \$7,500

Used Tractor Parts

Most Makes and Models
Have Large Selection

Recent Arrivals: IH 1066; IH 1586; IH 656; JD 4010; IH 1086; Ford 900; IH 986; AC D14; Oliver 70; JD 60; IH 560; JD 720 dsl; JD 4230; AC 190 XT; Case 970

Call (717) 776-7542
for detailed information

MON-FRI 8-5

SAT 8-12

No Sunday Calls

Will Ship UPS

No Out-Of-State Personal Checks

AG TELEXCHANGE

1-800-876-FARM

For as little as \$10.00 list the farm equipment you have for sale for 90 Days.

CALL US FOR ALL OF YOUR FARM EQUIPMENT NEEDS

1-800-876-FARM

To Buy or Sell Farm Equip.

TO BUY:
• Absolutely Free
• Call for list today

TO SELL:
• For as little as \$10
• 90 Day or 1 yr. listing

Ag Telexchange
A new horizon in buying and selling farm equipment

P.O. Box 96 • Midland, VA 22728
fax: (703) 439-9344

Best Buys in Used Equipment

USED EQUIPMENT

IH 886 w/4 post roll guard, good condition

IH 784, diesel w/2250 loader

...Coming In

Farmall M, Mechanics Special

6 ton running gear

5' sickle bar mower for Farmall A or Super A

IH 445 baler w/thrower

(2) NH 489 mower conditioners

Brillion 16' transport harrow

Brillion 14' single roll packer w/transport, excellent condition

IH 435 baler w/thrower

JD 2 row corn head

IH fast hitch equipment: 3 btm. plow;

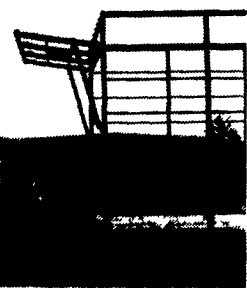
8' d ~~Sold~~ row; 2 row cultivator; 8'

Yor ~~Sold~~

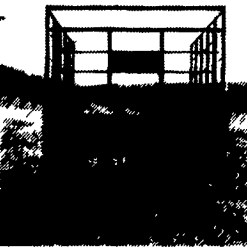
5' 3 pt. hitch rotary cutter

Unverferth gravity boxes in stock

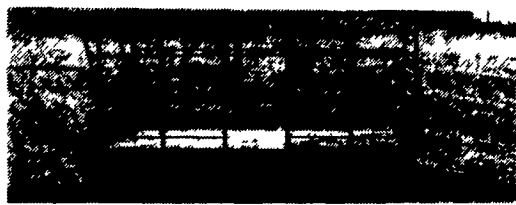
DUTCH BROTHERS



Unique Rear Unloading



Options:
Running Gears
& Flat Beds



- 18' x 8' inside
- 14 ga square tubing, for extra strength and long life
- Front and rear openings need only 38" clearance
- End gates made of extra heavy expanded metal, and spring loaded latches
- Beds built of all oak

- 3" x 8" main beams
- 2" x 5" cross member
- Nailed with galvanized nails
- Bolted with plated bolts
- Fabricated side rail for extra strength
- 8 ton gear
- 11L tires & tubes
- Extension tongue
- Built to last

New Chain Release Side Opening

SPECIAL PRICES THRU MARCH 15

Dutch Brothers

(717) 776-7465 or

(717) 776-3363

BANGOR IMPLEMENT

6 Flicksville Rd., Bangor, PA 18013

215-588-5922 or 215-588-5924



HERNLEYS FARM EQUIP. INC.

(717) 367-8867

2095 S. Market St., Elizabethtown, PA 17022



AGCO ALLIS



HESSTON THE PRIME LINE



AGCO GLEANER

SPECIAL

2-1993 Gleaner R62 Combines,
Excellent Condition.
Less than 800 Hours Each
Factory Warranty Good Until May of '96.

NEW TRACTORS

- AGCO ALLIS 4650-2 WD
- AGCO ALLIS 5670-2 WD w/loader
- AGCO ALLIS 7600-2WD
- AGCO ALLIS 9630-2WD

HAY EQUIPMENT

- HESSTON 1130 9 ft. Mower cond.
- HESSTON 1160 12 ft. Mower cond.
- HESSTON 1320 9 ft. Disc. Mower cond.
- HESSTON 555T - Round Baler
- HESSTON Forage Box - 16 ft.

TILLAGE

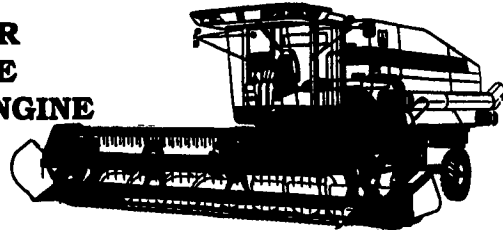
- AGCO 1500 min till, 9 shank hyd. coulters Special Price

DEMO

YOUR GLEANER COMBINE SALES AND SERVICE DEALER

LOW RATE FINANCING OR WAIVER OF FINANCE INTEREST TILL 9-1-94
Available On All New Equipment

1994 GLEANER R-52 COMBINE WITH CUMMINS ENGINE COMING IN!



SEE WHAT A QUALITY GLEANER COMBINE CAN DO FOR YOU IN THE FIELD

USED EQUIPMENT

- AC Disc 13.5 ft.
- AC Disc 10 ft., nice condition
- Hayrack Wagon
- 2-NH 489 Haybines
- NH 320 Baler w/70 thrower excellent condition!
- Roskamp Roller Mill.
- Amco Disc
- Holland 2 Row Transplanter

USED TRACTORS

- AGCO ALLIS 8630 AWD-Less than 400 hrs.!!!
- AC 6080 2WD-Nice condition
- **USED GLEANER COMBINES**
- (2) 1993 Gleaner R-62 Both combines loaded like new
- 1991 Gleaner R-60 w/RWA
- 1985 Gleaner N-5
- 1985 Gleaner ~~SOLD~~ 3
- New Holland TR85
- 1977 Gleaner L-2

CALL OR SEE OUR SALESMEN:

Mei Hoffer (717) 367-7171, Glenn Binkley (717) 285-5544,
or Duane Hernley (717) 367-8867

AGCO ALLIS

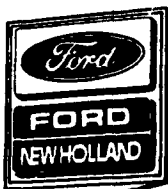
Partners For Tomorrow

When You Want Service You Can Count On Us!



NH28 Blower
NH 40 Blower
NH 38 Crop Chopper
MF 255 Diesel
Satoh Beaver, 4WD w/Mower

Ford 881D w/Loader
AC WD Tractor
NH 488 Haybine
NH 478 Haybine
6' 3 pt. Brush Cutter
Work Saver 7' Rear Blade
Fox Blower
MF 52 Disc
NH 668 LH Tank Spreader
Shaver HD 12 Post Driver F/NH Skid Steers
IH Hay Rake
Gehl CB600 w/2 Heads
Gehl 99 Blower
JD 336 Baler w/Thrower
IH 430 Baler w/Thrower
Woods C80 Rotary Cutter
NH 782 Forage Harvester, 2 Heads



SCHREFFLER EQUIPMENT

Pitman, PA
717-648-1120
717-648-1811