

**IH TRACTOR PARTS**

Including Crawler & Construction Parts

**BATES CORPORATION**

14th AND FIR RD., BOURBON, IN 46504

PARTS DISMANTLED, CLEANED & READY FOR SHIPMENT  
WE SHIP UPS, TRUCK, BUS

Best Prices On Factory Rebuilt TA's & Clutches  
**NEW REPLACEMENT PARTS**

CALL THE IH PARTS SPECIALISTS  
TOLL FREE 1-800-248-2955

**Case IH  
5140**

MFD Tractor,  
205 Hrs.,  
510 Loader  
attached,  
shuttle shift  
**\$43,500**

(410) 584-8003

(6) Pequea kicker wagons & gears,  
from 1-4 years old  
326 NH baler w/thrower

**Yingling's Implement, Inc.**  
3291 Taneytown Road  
Gettysburg, PA 17325  
717/359-4848 717/359-4380  
Ask for Bud

Winco, Fidelity & Katolight Alternators,  
Automatic Generators, Diesel - LP Gas.  
Repair service on all alternators.

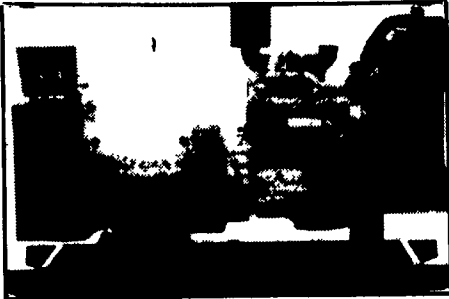
Call before you buy

**WALLIS GENERATORS**

Carbondale, PA

717-282-2342 1-800-231-2968

**GENERATORS**



**AUTOMATIC and  
MANUAL SYSTEMS**

**DIESEL  
L.P. GAS  
NAT. GAS  
NEW & USED**



**LEROY SOMER  
PTO ALTERNATORS**

**BRUSHLESS  
INDUSTRIAL GRADE  
11 to 60 KW**

**READY FOR THE NEXT STORM?**

For Sales and Service Call The People Who Know Generators

**MARTIN ELECTRIC PLANTS**

280 Pleasant Valley Rd., Ephrata, PA 17522-8620

Tel: 717-733-7968 Fax: 717-733-1981

**Best Buys in Used Equipment**

**COMBINES & HEADS**

- 1994 Case IH 1644 Axial Flow DEMO w/15' 1020 Head, 190 Hours
- 1992 Case IH 1640 Axial Flow w/15' 1020 Head, 475 Hours
- 1991 Case IH 1640 Axial Flow w/15' 1020 Head, 1000 Hours
- 1991 Case IH 1660 Axial Flow w/16 1/2' 1020 Head, 1054 Hours
- 1990 Case IH 1660 Axial Flow w/15' 1020 Head, 1277 Hours
- 1984 IH 1440 Axial Flow w/15' 820 Head, 1800 Hours
- 1982 Massey 850 w/18' Head w/U 2 Reel, 3400 Hours

**TRACTORS**

- Case IH 7110 2WD Magnum (763 Hours, Like New)
- Case IH 7110 2WD, Magnum
- IH 5088, 1984, Duals

**MISCELLANEOUS**

- Gehl 315, Side Delivery Manure Spreader
- Knight Side Delivery Manure Spreader
- Pixall 3 Pt. 1R Corn Harvester, Like New
- Soft Hose Water Wench
- Ford 951 Rotary Mower, 3 Pt. Hitch
- JD 7b On-Land Plow
- Case IH 5717 Chisel Plow, 17'
- Lely- Roterra, 8'
- Bolens ST110H Lawn Tractor
- Lely Roterra 13'6"
- IH 4 Bottom Rollover Plow, 16"
- Bauer Pump Unit w/Deutz F5L413FR-500/600 GPM @ 170 PSI
- Farm-Hand Dump Wagon
- Car Trailer w/Tandem Axle

**HAY & FORAGE**

- NH 326 Square Baler (Wire)
- NH 488 Haybine
- (2) NH 268 Square Baler w/Thrower

**Farm-Rite inc.**

Agricultural Equipment, Supplies & Services  
SHILOH, N.J.

1-800-752-6373



**Norm Shores & Son Tractor**

RR 5, Towanda, PA 18848

717-265-9014

**USED TRACTORS**

- Ford TW15, cab, air, 1985 model, 4x4, triple outlets, radial tires, weights all around, excellent
- Ford 6610 Series II, cab, air, 4WD, dual power, dual remote, syncro mesh, extra nice
- Ford 6610 Series II, cab & air, 2WD, dual power, dual remotes, extra nice
- Ford 6610 4x4 w/quick attach self-level loader, dual power, dual remotes, syncro, nice
- Ford 5000 dsl, 8 speed w/dual remotes, 38" tires & weights
- JD 4440, cab, air, quad, 20.8x38 radials, triple outlets, very nice
- JD 4430, cab, air, power shift, 2 remotes, 18x38 tires, 3600 hours
- JD 4020 dsl., power shift, side console, 1971 model
- JD 4020 diesel, syncro range, side console, 4700 original hours, excellent
- JD 3020 side console, dsl, power shift, dual remotes, new paint, very nice
- Case IH 885 Dsl., 4x4 w/IH 2255 loader, dual remotes, dual PTO, TA, roll bar, 1000 hours, very nice
- Case IH 685, dsl, 4WD w/IH 2250 loader, 1200 hours, like new
- Case IH 685 dsl. 4x4 w/IH 2255 loader, dual remotes, TA, roll bar, 1500 hours, very nice
- Case IH 485 dsl, 4 WD, w/IH 2255 loader, roll bar & canopy, low hours, very nice
- IH 1486, cab, air, dual PTOs, dual remotes, 20x38 radials
- IH 1086, 1981, cab, air, fully weighted, dual remotes, digital, western interior, extra clean
- IH 786D 1980 w/358 German engine, dual remotes, fender tractor, good condition
- IH Hydro 70 dsl, 18x38 tires, dual remotes, w/IH loader w/ind. valve, local trade, very nice
- Case 870 dsl, power shift w/2 remotes, front weights, 18.4x34 tires, good condition
- AC 7040, cab, air, weights, 20.8x38 tires, 20 spd. power director, very nice
- White 2-105, cab & air, 2700 hours, very nice
- White 2-135, 4WD, cab, air, digital, deluxe interior, 2 PTO's, 2800 hrs.
- MF 285, multipower, dual remotes, dual PTO's, wet brakes, excellent cond.
- Kubota 8580, 4WD, roll bar & canopy & Kubota QT loader, All options, 900 hours, excellent

**USED FORAGE EQUIPMENT**

- NH 36 Fall Chopper
- NH 782, electric controls, heavy duty 540 PTO, new paint, ready to go
- Gehl 1260, fully equipped with all the options, choice of heads, very nice
- Gehl 970, 3 beater, no roof, w/JD 12-ton tandem
- Gehl 970, 3 beater w/roof & JD 12-ton tandem
- Gehl 960, 3 beater w/roof, steel sides & Gehl 12-ton tandem
- Gehl CB800, electric controls, 2 RN, hay pickup
- FNH 790, electric controls, late model heads, very nice
- JD 3950, electric controls, hyd. tongue, 2RN corn, 5' dolly wheel pickup head, excellent
- Gehl 1250, tandem axle, electric controls, 2 or 3 RN, 7' pickup, nice condition
- Rex 3 beater w/roof tandem axle wagon, steel sides, very nice condition (Lamco)

**USED PLANTERS AND DRILLS**

- IH 510 18x7 double disc w/seed & grass seed, very nice
- IH #10 16x7 single disc drill w/all 3 boxes, nice clean unit
- Brillion SS10 Sure Seeder w/transport wheels & acre meter
- JD 7000 6RN conservation, dry fert., monitor, good condition
- JD 7000 4R conservation, monitor, dry fert. & insecticide boxes
- JD 1240, 4R plateless, disc openers, monitor, must be seen to be appreciated
- JD 7000, 4RW plateless insecticide boxes and monitor, very nice
- JD 7000 4RN, dry, plateless, insecticide boxes

**USED PLOWS AND CHISELS**

- IH 720 4x18 auto reset w/coulters & gauge wheel
- White 508 4x18, auto reset w/coulters & sidehill hitch
- Oliver 588 4x18, auto reset w/coulters & gauge wheel
- JD 1710 9-tooth mulch tiller w/walking tandems, very nice
- IH 720, 5x18, auto set, coulters, gauge wheel, side hill hitch, very nice
- Oliver 4x16 hyd. reset, semi mount, \$550
- White 508 4x18 auto set in trip w/spring loaded coulters
- Case IH 720 5 or 6 spring auto, excellent

**USED DISCS AND HARROWS**

- Pittsburgh 20' transport spring tooth harrow, used very little
- Oliver 252 10' finishing disc, dual wheels, very nice
- Brillion 10' double packer
- JD 16' transport type spring tooth harrow, good condition
- IH 133 4R cultivator w/rolling shields, excellent
- McConnell 16' transport spring tooth harrow
- Kewanee 12' rock flex finishing disc, very nice
- White 253 12' finishing disc w/tandem wheels, very nice
- Brillion 12' harrow, excellent
- Brillion 10' packer w/4" axle, very nice
- White 265 11' heavy frame cutting disc w/tandem wheels & 24" blades

**USED HAY EQUIPMENT**

- NH 316 w/#70 thrower, excellent
- NH 847 round baler
- NH 276 baler w/thrower, electric controls, cylinders & hoses, very nice
- NH 489 haybine, stub guards, excellent, 2 to choose from

**USED HARVESTER HEADS**

- JD 2RW w/clutch
- NH 824 2R corn
- Gehl 6' pickup w/dolly wheels
- FNH 790 hay head, like new
- FNH 900 hay head, like new
- NH 3 RN Auger base package w/8' pickup

**MISCELLANEOUS**

- Ford 727 loader, fits 4000-7000 series tractors
- Used 18.4x34 snap-on duals
- JD 300 picker/husker w/2RN head