

Farm Women Societies

Lancaster Society 18

Lancaster County Farm Women Society #18 held the February meeting at "The Gathering Place" in Mount Joy for a noon meal. Thirty-four were in attendance. Husbands were guests not only to enjoy the food and fellowship, but also to learn about the Pa. Dept. of Agriculture's program in the competitive area of Foreign Trade.

Speaker Peter Witmer, Chief of Domestic International Trade Agency of the Dept. of Agricul-

ture, reported that booths are rented at 30 world wide trade events for Pa. companies to share their products to foreign buyers.

The Food Trade Show is the world's largest of its kind.

Members were amazed to learn of the diversity of these Pennsylvania companies.

The society had a positive reaction to the aggressive program of the Pa. Dept. of Agriculture and pride in the report of 6.1 billion in exports of Pa. companies.

Berks Society 6

Six members and one guest attended the February luncheon meeting of the Berks County Society of Farm Women Group #6. Roll call question: Did you give or receive a valentine?

Members were reminded to bring items for the Greater Berks Food Bank to the next meeting. Members were asked to bake goods and help to make noodles for a community pot pie dinner on Sunday, March 20 from 12:00 to 4:00 at the Oley Valley Elementary School.

Spring Rally will be held May 11 at the York Fairgrounds.

After the business meeting, members had a guided tour of the New Oley Valley Elementary School.

The March meeting will be in the home of Mary Youse, 115 Stitzer Rd., Oley, at 8:00 p.m.



York Society 26

York County Society 26 met at Yocumtown Church of God on February 15. Incoming president, Doris Beshore, conducted the business meeting.

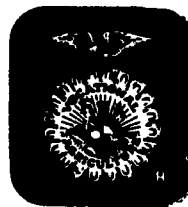
January's meeting was cancelled due to bad weather so reports on the state convention were given

at this meeting.

Sixteen members were in attendance.

Birthdays for January and February were celebrated.

The next meeting will be March 8. There will be a speaker from Pa. Foundation For Better Living at this meeting.



HAPPENINGS

National FFA Week Connie Nolt Reporter Cloister FFA

National FFA Week was observed February 21-25 to better inform the public about FFA.

FFA encourages members to develop their leadership skills and to strive for excellence.

There are many contests available to participate in, such as public speaking, parliamentary procedure, animal judging, milk judging, land judging, and many more.

FFA students are to have their own projects. The project can be anything related to agriculture,

raising strawberries, bees, hogs, lambs, rabbits, and many more.

Members can also work at an agriculture-related business, such as working at a hardware store or, of course, working on a farm.

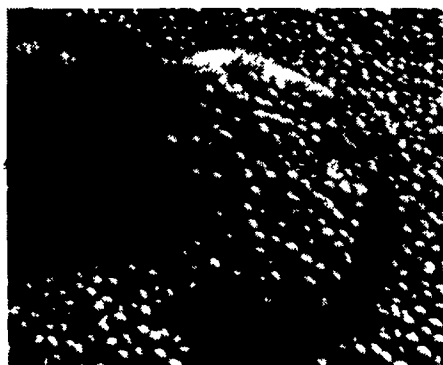
A detailed record book must be kept for every project a student has. A student can have many projects.

I think FFA is a very worthwhile organization to get involved with. It gives you many challenges and opportunities. You meet many new friends at contests too.

As a freshman, I am very excited about FFA and I hope you become interested, too.



Spread your risk by planting a combination of these HyPerformer soybeans.



HSC 317 Brand

EARLY GROUP III

"RACEHORSE" PERFORMANCE

- Ideally suited to narrow rows or drilling with high populations
- Very attractive showy plant type
- A "racehorse" line. Pour the management to HSC 317 and it responds!
- Very good Phytophthora field tolerance
- Strong stander with very good seed shatter resistance
- Excellent yields in Iowa, Illinois, and Indiana Performance Trials

HSC 339 Brand

EARLY GROUP III

HEALTHY. RESISTS DISEASES

- Widely adapted, with outstanding performance as you go east, all the way to the East Coast
- Strong Phytophthora gene resistance and brown stem rot resistance
- Strong emergence, quick early growth, canopies quickly
- Very versatile, adapts well to wide or narrow rows, high yield or stress conditions
- An excellent agronomic package coupled with high-yielding stability
- Four years of replicated yield trials show a 6% yield advantage over Resnik!

HSC 355 Brand

MID GROUP III

PROVEN. CONSISTENT. VERSATILE

- Proven mid Group III leader from east to west across Group III production areas!
- Outstanding emergence, standability and seed shatter resistance
- Very versatile, adapts well to conventional or no-till planting, wide or narrow rows
- Very good Phytophthora and iron deficiency chlorosis tolerance
- A very impressive yield track record from the East Coast, across Ohio, Indiana, and Illinois, to the western Cornbelt



HYPERFORMER VARIETIES ARE AVAILABLE THROUGH THE FOLLOWING DEALERS:

John J. Hoover
Blain, PA
717-536-3597

Tim Schadler
Fogelsville, PA
610-285-6876

Lehr's Feed & Farm Supply
Pine Grove, PA
717-345-3309

Grange Store
Green Park, PA
717-789-3416

T&S Sales
Bethel, PA
717-933-4725

Marion Center Milling Co.
Marion Center, PA
412-397-2100

OR THE FOLLOWING **HELENA** CHEMICAL LOCATIONS:

Woodstown, NJ
609-769-0147

Shrewsbury, PA
717-235-7961

Mifflinville, PA
717-759-1311

Warriors Mark, PA
814-632-5177

Wellsboro, PA
717-724-5800

Performance of seed may be adversely affected by environmental conditions, cultural practices, changes in disease races, insects and other factors beyond HyPerformer Seed Company's control. The limitations of warranty and liability on each bag of HyPerformer Seed Company's seed sold are part of their terms of sales thereof.

ROLLING ON...IN THE 90's



MEETS THE CHALLENGE

BRILLION IMPLEMENTS

KEEP GOING WHEN OTHERS QUIT



NEW

NEW

For more information contact your Brillion Dealer

PENNSYLVANIA

Adamstown
ADAMSTOWN
EQUIP. INC.

Allentown
LEHIGH AG
EQUIPMENT

Altoona & Cresson
HINES
EQUIPMENT CO.

Bechtelville
MILLER
EQUIP. CO.

Berwick
C.H. RINEHIMER
& SONS

Carlisle
GUTSHALL'S, INC.

Dover
GEORGE N.
GROSS, INC.

Easton
GEORGE V.
SEIPLE

Elizabethtown
MESSICK FARM
EQUIPMENT CO.

Intercourse
C.B. HOOBER
& SON

Greencastle
MEYERS
IMPLEMENT

Greensburg
J & M MACHINERY
CO., INC.

Lancaster
LANDIS
BROTHERS, INC.

Lebanon
UMBERGER'S
OF FONTANA

Loyville
GUTSHALL'S, INC.

Lynnport
KERMIT K.
KISTLER, INC.

Maxatowny
N.H. FLUCKER &
SONS, INC.

Needmore
CLUGSTON
FARM EQUIPMENT

New Holland
A.B.C. GROFF, INC.

Oakland Mills
PEOPLES
SALES & SERVICE

Oley
PIKEVILLE
EQUIPMENT, INC.

Quarryville
GRUMELLI FARM
SERVICE

Tamaqua
CHARLES
SNYDER, INC.

MARYLAND

Frederick
CERESVILLE FORD
NEW HOLLAND

Bridgeton
LESLIE FOGG

Elmer
POLE TAVERN
EQUIP.
SALES CORP

Washington
BULL
INTERNATIONAL

Watsontown
DEERFIELD AG &
TURF CENTER, INC.

West Grove
S.G. LEWIS &
SON, INC.

NEW JERSEY

Urbana
KNOTT &
GEISBERT, INC.

Columbus
REED BROTHERS
EQUIPMENT

Fairfield
CALDWELL
TRACTOR &
EQUIPMENT