

1 FARM EQUIPMENT

ALL NEW



NOW THIS IS TOUGH

When you've got a tough job to do, you need the awesome power and reliability of the New Holland Super Boom™ skid-steer loader.

The all-new Super Boom features improved hydraulics, a new electrical system, solid state instruments and a new attachment system.

Routine service is simple with the boom down and there's quick access to the engine and transmission with the flip-up cab and boom.

Stop in and see what makes Super Boom so tough.



NEW

MID-SIZE STRONG BOX

Here's the newest addition to the 100 Series line of New Holland box spreaders. The Model 165 can spread 311 cu. ft. (249 bu.) quickly and evenly. Compare these features:

- Exclusive Bonded Protection warranty still the best in the industry
- Exclusive HDPE floor strongest on the market against shock damage
- Unique "floating-floor" design reduces stress
- Shearbolt-protected standard worm gear drive
- Best spread pattern in the industry — 12 welded paddles maximize shredding

Consider the rest...buy the best. See us today!



QUALITY USED EQUIPMENT FOR SALE

- NH 1495 Diesel Engine, Hydro, Cab, AC, Haybine
- Hesston 1130 Mower Conditioner
- IH 1086 Tractor
- (4) NH 489 Haybines
- NH 851 Round Baler
- NH 1034 Bale Wagon
- NH 144 Windrow Inverter
- NH 791 Spreader
- Gehl 99 Blower
- Stoltzfus Wet Lime Spreader
- Deutz Allis 6260 Tractor

DEPENDABLE MOTOR CO.

East Main St., Honey Brook, PA
610/273-3131 or 610/273-3737

- | | |
|---------------------------|------------------------------|
| NH 311 Baler w/70 Thrower | NI 1R Corn Picker |
| NH 520 Manure Spreader | NH 474 Haybine |
| NH 790 Manure Spreader | NH 478 Haybine |
| Grithm Tadder- New Demo | NH 144 Windrow Inverter |
| NH 489 Haybine | NI 206 Ground Drive Spreader |
| Ford 532 Baler | NH 456 Mower |
| NH 310 Baler | NH 770 Harvester |
| NH 30 Forage Blower | NH 8 Forage Box w/Tandem |
| NH 770 Pick-Up Head | NH L455 Skid Loader |
| Butler 28" Pit Pump | |

WE REBUILD 489 WOBBLE BOXES

DEALER FOR Roskamp

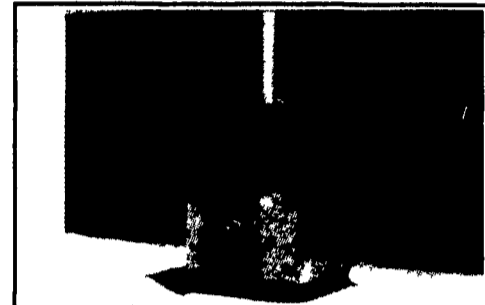
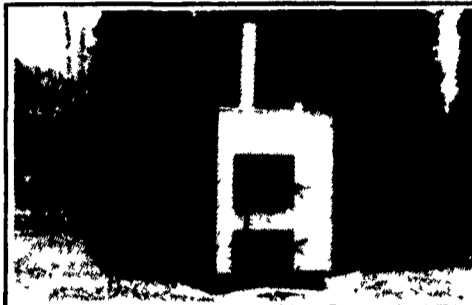


- * 1992 JD 8960 w/20-8-42 duals, 4 outlets, AM-FM Stereo, always shedded, excellent shape, 952 hrs.
- * Kinze 12 row 30", old style, HD, twin line planter, frame mounted coulters, w/Rawson coulters, John Blue piston pumps, radar monitor and insecticide, always shedded, excellent shape.
- * NI 900 series 6 row 30" w/Inter-plants double frame planter, frame mounted coulters w/Rawson coulters, John Blue piston pumps, radar monitor, insecticide, always shedded, excellent shape

(717) 235-3004
(717) 235-2466

MAHONING OUTDOOR FURNACES

"The Natural Way to Heat Your Home"



Efficiency Rating 83% to 85% - Cut Emissions by 90%
3 Year Warranty Except Electrical Components (1 Year) — 35 Years Heating Experience
PROUDLY BUILT IN CLEARFIELD COUNTY, PENNSYLVANIA

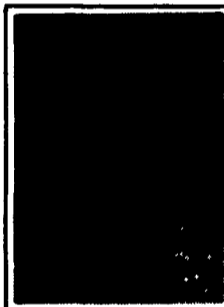
FUEL USED IN STANDARD UNIT:	SIX SIZES:
WOOD & COAL & WOOD BY-PRODUCTS (SAWDUST, PAPER, ETC.)	Model 100Sboth supply up to 100,000 BTU's per hour 100MF 24 inch long fire box
FUEL USED IN MULTI-FUEL MODEL:	Model 200Sboth supply up to 200,000 BTU's per hour 200MF 36 inch long fire box
SAME AS ABOVE	Model 300Sboth supply up to 300,000 BTU's per hour 300MF 48 inch long fire box
INCLUDING OIL, PROPANE, NATURAL GAS	Model 400Sboth supply up to 400,000 BTU's per hour 400MF 60 inch long fire box
	Model 500Sboth supply up to 500,000 BTU's per hour 500MF 60 inch long fire box
	Model 1-millionSboth supply up to 1,000,000 BTU's per hour 1-millionMF 60 inch long fire boxes

Models and specifications subject to change without notice.

TODAY'S MAHONING OUTDOOR FURNACE WILL HEAT YOUR HOME, BARN, POOL, BUSINESS, GREENHOUSE, & DOMESTIC DRINKING WATER TOO!
WE CAN CUSTOMIZE A UNIT TO FIT YOUR PERSONAL NEEDS!

Safe • Efficient • Durable
Look at what makes the Mahoning Outdoor Furnace a great purchase...
CLEAN.All dirt, dust, fuel and fire is outside No chance of chimney fire or flue fire.
ELIMINATES AIR POLLUTION IN THE HOME.Smoke, fuel odors and other causes of allergies are outside the home
SAFE FOR MOBILE HOMES.Eliminates danger that other furnaces contained in a mobile home can cause
NO DANGER OR EXPLOSION.This is a zero pressure furnace.
ENCLOSED COMPONENTS.The circulation pumps and electrical connections are enclosed in an insulated cabinet on the back of the Mahoning Outdoor Furnace
ADAPTABLE.Install our furnace in any forced air heating or hot water system

All Mahoning Units Come Installed with Grates Including An External Shaker Handle



★ The only outdoor furnace made with a Catalytic Combustor. ★

Mahoning Catalytic Combustor Will Help in the Following Ways:

1. Burn one cord of wood which equals 166 gallons of oil.
2. Your fuel source becomes enormous inexhaustible and poses few risks to public safety.
3. Over all efficiency of 85%, which means the heat no longer goes up the chimney!
4. You get more heat from a log compared to the non-cat. furnace.
5. More burn time - less reloading time!
6. Zap 90% of pollutants, made from fire source.
7. Saves you a lot of money!
8. User friendly, emits no smoke!



All Mahoning Multi-Fuels Can Burn Coal, Wood, Oil, Propane, Natural Gas

MAHONING MANUFACTURING Mahoning Outdoor Furnace Co.

RD 1, Box 250, Mahaffey, PA 15757

(814) 277-8675 - (814) 277-8675 Dealer Inquiries Welcome

- Call Your Local Dealer Today and Find Out How Mahoning Can Save You Dollars. -

- | | | | |
|--|--|---|---|
| Clyde Aderer
Mt Pleasant Mills
717-530-8456 | Bill Lantz
Aurora, West Virginia 26705
304-735-6836 | Odin Tree Farm (Harry Fox)
Coudersport, PA 16815
814-847-8764 | Randy's Repair Service
Milicreek, WV 26280
304-335-8086 |
| William Stahl
Loysville, PA 17047
717-769-3244 | Stan Weneel
Barre, PA 16615
814-699-4568 | Snow Garden Shop (Dean Snow)
Kams City, PA 18041
412-445-2765 | Walter Simmons
Brandywine, WV 26802
304-249-8206 |
| Bauer Farms
Lucinda, PA 16235
814-744-8400-800-852-2116 | Tim Stairs
Somerset, PA 15501
814-443-4195 | Dave Scott
Orbisora, PA 17243
814-447-5469 | Rodney Strader
French Creek, WV
304-824-5884 |
| Clarks Plumbing & Heating
Clearville, PA 15535
814-784-5716 | Mike Hollenhead
Nesdmore, PA 17238
717-486-4939 | Merrill Stains
Three Springs, PA 17264
814-446-3847 | Mark Nofs
Berryville, VA 22611
703-665-2744 |
| Charles Heating
Clearfield, PA 16830
814-765-8633 | R & B Industries
Shipperville, PA 16254
814-782-3332 | Gary's inc.
Falls Creek, PA 15840
814-371-4886 | Kevin Hoffman
Hadye, PA 16130
814-786-8382 |
| Sleepyhead Power Equipment
Brookville, PA 15825
814-849-3200 | Roger Hartle
Grove City, PA 16127
412-458-8645 | Clarks Heating Service
Ligonier, PA 15658
412-236-6122 | George Duncan
Millville, PA 17846
717-458-4637 |
| McNamara Heating
Meadville, PA 16335
814-724-6716 | Gary Schoenly
Birdsboro, PA
610-696-5230 | Corie Heating
Imier, PA 16655
814-276-3085 | Charles Bowman
Lebanon, PA 17046
717-273-8332 |
| Henry Kinsinger
Oakland, Maryland 21550
301-334-8610 | | Dave Saunders
Gillett, PA 16925
717-886-2263 | Tony Liller
Lumberland, MD 21502
301-777-8886 |