

NH 411 discbine, 540 PTO, 3 years old, sharp, shed kept, \$7,500 (301)898-7426

Pair 18 4x38 tires, 80% tread, \$350 (301)898-7426

REBUILT LIKE NEW

- 1 Petter AC 6 HP
- 1 Petter PH1 7½ HP
- 1 Lister LD1 5 HP
- 2 Lister SR2 16 HP
- 2 Lister ST3 30 HP
- 1 Lister TS3 30 HP
- 2 Deutz F2L912 30 HP
- 2 Lister LR1 6 HP
- 1 Deutz F1L 712 10 Hp 1800 RPM 4800 GN-Set

Twin Disc Clutches & Speed Clutch

Write or Call 717-483-6446

DISTRIBUTOR

Bylers Diesel Refrigeration

HCR61 Box 32 Belleville, PA 17004

CLIP - SAVE

JD 630 disc, 15', very good, used little, \$4500 717-649-5945.

JD 630 standard, good condition 410/795-0308 after 6pm

JD #68 auger cart, good condition, \$500 301-349-5432

JD G, 1937, Ser #2495, 1949, GW, 1947, 1948, 1952 Farmall High Crop HV, MV, 460D. M/Moline U, High Crop 319-266-5567 after 7PM

JD no-til 1440 corn planter, 4R, 30", dry fertilizer, \$1,800 (301)898-7426

Farmall Super M, belt pulley, good condition, \$1500. 610-323-5617.

Farmer selling 1 of 3 shed kept JDs 2940 w/3000 hours, \$12,500, 2940 w/5500 hours, \$11,300, 3020 WF, PS, w/6100 hours \$6,800. Lancaster Co (717)665-2561

Farmall Cub w/Full Cultivators, 250 Lb. Capacity Side Dresser, Front and Rear Weights, Excellent Condition \$2000 (410)655-7094

IH 1066, 2,800 hrs., CAH, 1 owner, must see to appreciate. Coming In. \$9,850. 410-833-9091

John Deere 3010 gas tractor, engine completely rebuilt, exc condition, steel wheels available, \$4900 717/354-6197

John Deere #68 auger wagon, Oliver 77 diesel w/ sickle bar mower; New Holland #55 rake Call 814-422-0313 evenings

J.L. HOLLINGER & SONS INC.

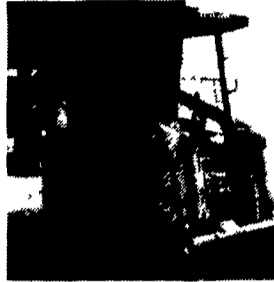
RT. 72N, Manheim, PA.

717-664-2444

717-665-2354

FAX 717-664-2835

NEW & USED Farm & Construction Equip.



90 Case 1835C Skid Loader w/GP Bucket, Flotation Tires, VG Cond. \$10,000



80 John Deere 690B Excavator w/Full Cab, Pilot Controls, VG Cond. \$25,000

SKID LOADERS

- Bobcat 943 w/Dirt bucket, flotation tires..... \$12,500
- Bobcat 743 w/flotation tires, 60" dirt bucket..... \$10,500
- Case 1835C New paint, new tires, runs & operates v.g..... \$10,000
- Koering 1050 skid loader w/aux. hyd., 60" bucket..... \$7,250
- Bobcat 843 w/flotation tires, new paint, aux. hyd..... \$12,000
- Bobcat 743 w/flotation tires, aux. hyd., 60" dirt bucket..... \$8,500
- HYDROMAC 11C GP bucket, runs & operates good..... \$3,900
- Toyota 2SDK7, dirt bucket, flotation tires..... \$8,500

BACKHOES

- 1987 Case 580E TLB w/Full cab, ex-hoe, 4WD..... \$25,000
- 86 Ford 655A TLB w/full cab, ex-hoe, 4WD..... \$21,000
- 92 Case 580SK Turbo 4WD Cab, ex-hoe..... \$41,000
- 1987 Case 580K TLB, full cab, extend-a-hoe..... \$23,500
- Case 580E TLB, full cab, extend-a-hoe..... \$17,500
- Case 580D, TLB, w/ROPS canopy & standard hoe..... \$15,500
- Ford 555 TLB w/ROPS Canopy, Standard Hoe..... \$18,500
- JD 410B TLB w/ROPS Canopy, Standard Hoe..... \$18,500
- Ford 555A, ROPS, extend-a-hoe..... \$13,750

LOADERS

- 77 JD 544B 4WD wheel loader w/full cab GP bucket..... \$25,000

FORKLIFT

- Case 585 21' Mast..... \$18,500

- CRAWLERS**
- JD 450B crawler loader w/GP bucket..... \$10,500
 - Case 455C crawler loader, ROPS canopy, sweeps, 4N1 bucket..... \$22,500
 - Benati 7.16 LGP, full cab, GP bucket..... \$14,500
 - Case 455C, crawler loader, GP bucket..... \$22,500

EXCAVATORS

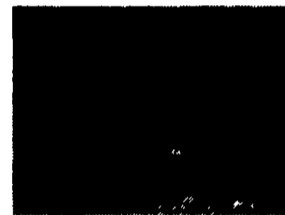
- '80 JD 690B w/full cab, 30" bucket, very good cond..... \$25,000
- '80 JD 890A 40" Bucket, runs & operates good, low hours..... \$25,000
- '88 JD 490D LC w/full cab, very good cond..... \$38,500
- '85 JSW BH110 LC..... \$20,000
- '78 Cat 235 LT 42" Bucket..... \$40,000
- Takeuchi TB800 ROPS canopy, runs & operates very good... \$10,500
- Takeuchi TB800 w/full cab..... \$12,500
- Takeuchi TB35 w/ROPS canopy, hydraulic braker hammer... \$15,000

TRUCKS & TRAILERS

- Eager Beaver 20 ton tag-a-long trailer, air brakes..... \$6,500
- 1978 IH S2250 w/290 Cummins, 10-Spd. Trans., Tandem Axle Truck Tractor..... \$6,500
- 1972 Ford L8000 Single Axle Dump Truck w/3208 Cat Dsl., 5-Spd. Trans. w/2-Spd. Rear..... \$10,500
- National 4T46 Truck Crane Mounted On Ford F800 Truck... \$14,500

TRACTOR

- Kubota M6950 w/4WD, Rops, 3 Pt. PTO, 4 Outlets..... \$12,500



80 John Deere 755A Crawler/Loader w/GP Bucket, Full Cab \$18,000



Case 380B Loader Tractor w/ROPS Canopy, 3 Pt. Hitch, PTO \$12,500

PTO KATOLIGHT ALTERNATOR



COMPLETELY BRUSHLESS DESIGN
5 Year Warranty

• 35,000 Watts • Power Cable • Trailer ON-HAND

Write or Call 717-483-6446

BYLER'S DIESEL & REFRIGERATION

HCR 61 Box 32, Belleville, PA 17004

HARDI 3 Point Hitch Sprayers

...performance

HARDI - The World Leader

Quality assurance - all components are manufactured in-house with state of the art production equipment.



Designed to deliver

From basic to sophisticated, HARDI has the widest range of 3 point hitch sprayers available with tank sizes from 25 to 350 US gallons and booms from 20' to 50', manual and hydraulic. Add convenience & safety to your spray job with one of our many accessories

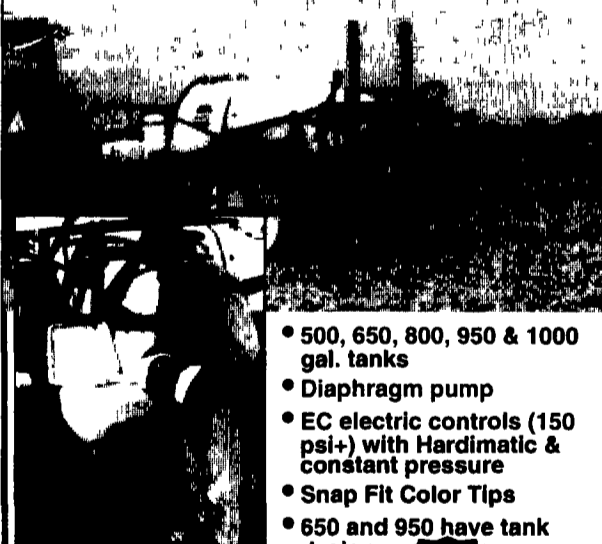
Chemical Filter

- Safe & quick mixing of both powdered & liquid chemicals
- Many other accessories available

HIGH CLEARANCE TRAILER

NEW

for post-emergence spraying & no till conditions



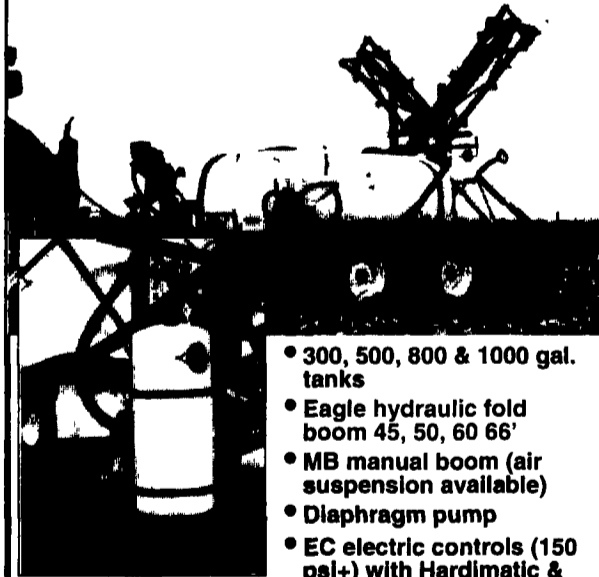
CHEMICAL INDUCTOR

- Safety accessories available:
 - chemical inductor
 - clean water dispenser
 - boom flushing and tank rinsing systems

- 500, 650, 800, 950 & 1000 gal. tanks
- Diaphragm pump
- EC electric controls (150 psi+) with Hardimatic & constant pressure
- Snap Fit Color Tips
- 650 and 950 have tank designs

TR TRAILERS

for pre-and post-emergence applications with a high level of performance



FOAM MARKER

- Safety accessories available:
 - chemical inductor
 - clean water dispenser
 - boom flushing and tank rinsing systems

- 300, 500, 800 & 1000 gal. tanks
- Eagle hydraulic fold boom 45, 50, 60 66'
- MB manual boom (air suspension available)
- Diaphragm pump
- EC electric controls (150 psi+) with Hardimatic & constant pressure
- Snap Fit Color Tips
- Top drain & top suction

SPRAYERS IN STOCK

TRAILERS

- HC650/45' HYD. BOOM.....(1)
- TR500/45' HYD. BOOM.....(1)
- ESC500/45' HYD. BOOM.....(1)
- TL500/SINGLE AXLE/42' BOOM.....(2)
- TL300/35' BOOM.....(3)

3 PT. HITCH

- NL 210/33' BOOM.....(1)
- NL 155/33' BOOM.....(2)
- NL 105/26' BOOM.....(3)
- COMBI HY CANNON.....(1)

ONE ONLY SPECIALS

ESC 500/45' Eagle Boom \$7500 at New Ringgold

TL 500/Single Axle/42' Boom \$5350 at New Ringgold

NL 210/33' Boom (Demo) \$2200 - Located at Bangor



3 LOCATIONS TO SERVE YOU

Bangor Implement
Bangor, PA
215-588-5922

Eckroth Bros Farm Equipment
New Ringgold, PA
717-943-2131

D&E Equipment
Bloomsburg, PA
717-784-5217