

35 TRUCKS & TRAILERS

Eby Trailer 1993 22', Excellent Condition \$13,300 (717)539-2666.

FOR SALE 1991 Chevy Cheyenne, full size, 4x4 pickup truck, 26,000 miles, \$12,000 Juniata Co 717 436-8377

Int truck with 1974 gas engine, 2 speed rear, \$2500. 410/836-3206

LaBrie 1987 Trailer, 100 Yd. Capacity w/a Live Keith Floor, Tarp, New Landing Gear, Spring Brakes, Both Axles, Etc. (717)697-3730.

NEW DIESELS!



Quigley 4x4 Conversion 1994 F-450 Super Duty Chassis Cab, XL, 7.3L Diesel, 5 Spd. Manual w/OD, 5.13 Regular Rear Axle, Dark Blue w/Royal Blue Interior Stock #5945.



Quigley 4x4 Conversion 1994 F-350 Crew Cab 7.3L Turbo Diesel, Elec. 4 Spd. Auto, 4.10 Limited Slip Rear Axle, Camper Package, A/C, Speed Control, Tilt Steering Wheel, Power Door Locks/ Windows, Red w/Gray Interior Stock #7819.



1994 F-350 4x2 Crew Cab, 7.3L Diesel, Elec. 4 Spd. Auto, 4.10 Limited Slip Rear Axle, Trailer Towing Package, A/C, Speed Control, Tilt Steering Wheel, Power Door Locks/Windows, Emerald Green w/Gray Interior Stock #7825.



1994 F-350 SC 4x2, 7.3L Turbo Diesel, Elec. 4 Spd., Auto, XLT, 4.10 Limited Slip Rear Axle, Camper Package, Speed Control, Tilt Steering Wheel, Power Doors, Power Locks, Tucson Bronze w/Mocha Interior Stock #4520.

Coming In:

1994 F-250 Super Cab 7.3L Turbo Diesel, Elec. 4-Spd Auto., 4.10 Limited Slip Rear Axle, Trailer Towing, XLT Trim, Air Conditioning, Speed Control and Tilt Wheel, AM/FM Cass. Radio, White w/Ruby Red Interior Stock #7894

OUR LOWEST

"NO HASSLE PRICE"

IS MARKED ON EVERY VEHICLE EVERY DAY PERIOD

TRY US!



RD 7, Box 405
Lebanon, PA

717-949-2000

KELLER BROS.

17042



1981 FORD F-800
8.2L Diesel, 30,500 GVW,
16' Hewey Aluminum Dump With
Divider and Cross Auger
Walinga Blower, 55,000 Miles
\$19,500
717-866-7565

KEENS SERVICES INC.

Trailers

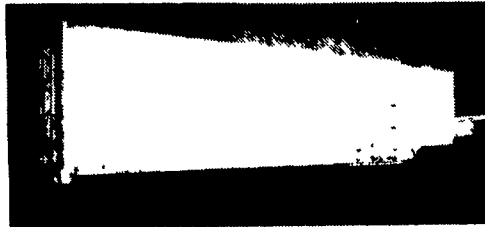
Lititz, PA

(717) 626-5420

- Sales
- Service
- Rentals
- New & Used Parts

"Since 1963"

1 Mile East Of The Lancaster Airport



(1) 48' & (1) 45' Electronics Vans
\$3,500.00 each



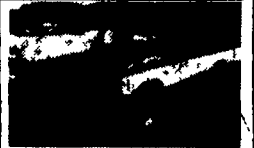
1991 FORD BRONCO XLT
5.8L Engine, PS, PB, AC, Cruise, Power Windows & Locks, 46,000 Mi., 1 Owner w/Factory Warranty, Dark Blue
\$14,995



1988 FORD F-150 XL
Extended Cab, 4.9 6-Cyl., 5 Spd., PS, PB, AC, Cruise, Dual Tanks, 96,000 1-Owner Miles, Black
\$6,895



1986 CHEVY ASTRO
V6, AT, PS, PB, AC, 69,000 Mi., Silver, Very Clean and Affordable At
\$6,995



1985 FORD RANGER
V6, AT, PB, PS, 68,000 Mi., Blue & White, Clean & Straight
\$3,695

1990 VOYAGER - Silver, 7 Passenger 22,000 Miles
1989 VOYAGER - Burgundy, 7 Passenger, 50,000 Miles
1988 HONDA ACCORD - 4 Dr, AT, 57,000 Miles, White
1986 DODGE WINDOW VAN-Short 5 Passenger, Cream



1986 MERCURY SABLE GS WAGON
V6, PS, PB, AC and More, 89,000 Mi., Tan, Runs Excellent.
Special \$3,995



1989 MONTERO SPORT
2.6 Engine, AT, PS, PB, AC, Tape, Radio, PW, Sunroof & More, Silver Finish, 68,000 Mi., Extremely Clean
\$8,595

REBER AUTO COMPANY INC.

Lincoln Ave & Cumberland Sts.
Lebanon, PA

717-273-5941

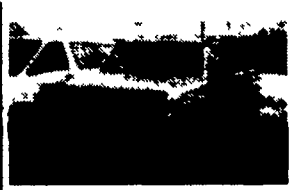
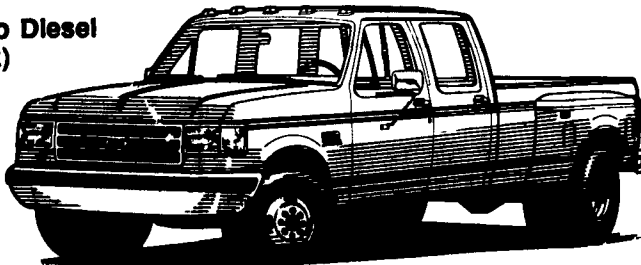
Family Owned & Operated 23 Years Same Location Rich, Richie & Patti Reber
6 mo/6,000 MI. Warranty Available on All Vehicles

Mark VII - Pickups - Broncos - Bronco II - Stake Body - Crew Cab -

In Stock

'94 FORD CREW CABS

- (2) F250's
- (2) '93 Turbo Diesel (In stock)



'92 FORD F150 6 Cyl., AT, Cassette #4180.....\$14,999



'92 FORD F150 Super Cab, Custom, 6 Cyl., AT, Low Mileage #4277A.....\$15,699



'92 FORD RANGER XLT 6 Cyl., 5 Spd., A/C, Fiberglass Cap, #4119A.....\$11,399



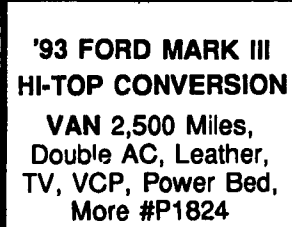
'93 FORD F150 V8, AT, Cassette, Loaded, 9,200 Miles #4138
\$16,999



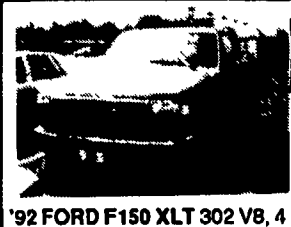
'89 FORD E150 CONVERSION VAN. 8 cyl., AT, AC, TV, Bivouac Conversion #4251A
\$15,999



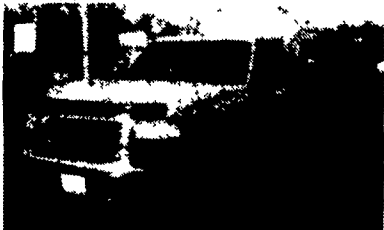
'92 DODGE DAKOTA SPORT 4 Cyl., 5 Spd., #4170\$10,999



'93 FORD MARK III HI-TOP CONVERSION VAN 2,500 Miles, Double AC, Leather, TV, VCP, Power Bed, More #P1824
\$21,989



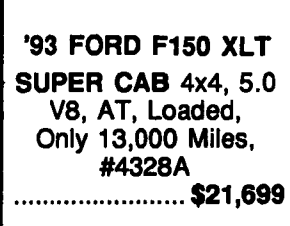
'92 FORD F150 XLT 302 V8, 4 Spd., 1-Owner #1609A
.....\$14,989



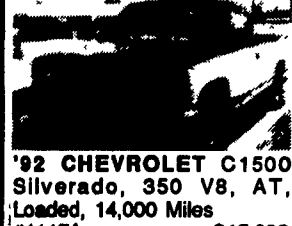
'92 FORD F150 XLT 6 Cyl., 5-Speed, 12,000 Miles, #P1732H
\$14,999



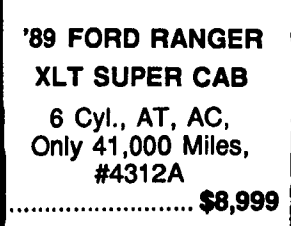
'85 FORD BRONCO 4x4, 6 Cyl., HD, 4 Spd., Very Clean #4055A
\$8,993



'93 FORD F150 XLT SUPER CAB 4x4, 5.0 V8, AT, Loaded, Only 13,000 Miles, #4328A
.....\$21,699



'92 CHEVROLET C1500 Silverado, 350 V8, AT, Loaded, 14,000 Miles #4117A.....\$15,999



'89 FORD RANGER XLT SUPER CAB 6 Cyl., AT, AC, Only 41,000 Miles, #4312A
.....\$8,999



'92 FORD RANGER 4 Cyl., 5 Spd., Fiberglass Cap #4279A.....\$9,799



'91 CHEV ASTRO VAN Captain's Chairs, AT, AC, Cassette #4163.....\$12,999



'92 FORD AEROSTAR XL, Extended, V6, AT, AC, #2012A.....Special \$12,899

Unless This Emblem Is On Your Car Or Truck You Probably Paid Too Much

SHEEHY LEBANON

SHEEHY FORD LINCOLN MERCURY INC.

20th & Cumberland St., Lebanon

9-9 Daily
9-5 Sat.
717-272-7671



Parts Dept. Open
Daily 8-5
Sat. 8-12
717-273-8168

Tempo - Cougar - Continental - Town Car - 4x4 - Box Van - Rangers -

Custom Vans

XLT

Grand Marquis

Marquis

Lynx

Topaz

Diesel Pickups

Mustang

T Bird