

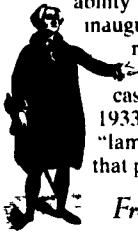


FEB. 28-MARCH 6, 1994

NATIONAL PIG DAY, MARCH 1.

INAUGURATION DAY

George Washington's first term of office began on March 4, 1789 however, he was not sworn into office until April 30, and did not even know of his election until April 14. March 4 was the original date set for the new government to convene. Unfortunately, Congress didn't have a quorum to count the electoral votes until April 6. Luckily, the late start to the first presidency did not adversely affect Washington's ability to lead the young nation. Washington's second inaugural took place "on time" in 1793, and March 4 remained the official beginning of each new presidential term until 1933 (except in the case of successions due to death of incumbent). In 1933, the Twentieth Amendment (known as the "lame-duck" amendment) was ratified, specifying that presidential terms begin at noon on January 20.



From small beginnings come great things.

TIP OF THE WEEK

When cutting foam rubber, dip the scissors in warm water to achieve a smoother cut edge.

EARTHWISE

Once upon a time, bottles were refilled rather than recycled. In some places, they still are. According to the World Watch Institute, in the province of Ontario (Canada), over 90% of the bottles sold are refillable, and more than 99% of these are actually returned for refilling. That's the highest redemption rate of its kind in the world! There's really no good reason why we can't do that in this country, too. We'll have to change our priorities — and let our beverage industries know what's important to us.

SPICED MEAT LOAF

- 2 eggs, beaten
- 1/2 cup milk
- 2 cups soft bread crumbs
- 1/2 cup diced onion
- 1/2 teaspoon nutmeg
- 1/2 teaspoon allspice
- 1/2 teaspoon ginger
- 1/2 teaspoon mace
- 1 1/2 pounds ground beef
- 1/2 pound ground pork

Combine all ingredients except meat. Add beef and pork and mix well. Shape into a loaf, place in shallow baking pan, and bake at 350° F for 1 1/2 hours.



Makes 8 servings.

The OLD FARMER'S WEATHER FORECAST



NORTHEAST:

Clear and cold; warming, with showers southern coast, snow mountains, cold, flurries north, snowstorm west.

SOUTHEAST:

Clear and cold, then sunny and warm, showers and rain, then clearing; sunny and hot Florida

MIDWEST:

Rainy, mild, then cool and clear; cold, snowstorm north and east

NORTHWEST:

Cool, showers; snow mountains; clear and cold coast, then heavy snow mountains and east, rain and snow coast

SOUTHWEST:

Cool, rain, snow mountains; turning cold, milder east

Greencastle Livestock

Greencastle, Pa.

Report Supplied by Auction February 21, 1994

SLAUGHTER STEERS: 140 HD. TREND: STEADY.

HIGH CHOICE AND PRIME 2-4 72.00-74.75; CHOICE 2-3 950-1075 LBS. 67.00-71.00; CHOICE 2-3, 1075-1375 LBS. 68.00-72.00; CHOICE 2-3 OVER 1375 LBS. 62.00-66.50; CHOICE 4 ALL WEIGHTS 60.00-66.00; SELECT & CHOICE 1-2 950-1100 LBS. 63.00-68.75; SELECT AND CHOICE 1-2 1100-1375 LBS. 62.00-68.75; SELECT AND CHOICE 1-2 OVER 1375 LBS. 60.00-66.00.

HOLSTEINS: CHOICE 2-3 1050-1450 LBS. 61.00-65.25; SELECT 1-2 1050-1450 LBS. 54.00-60.00.

SLAUGHTER HEIFERS: 51 HEAD, TREND STEADY. CHOICE 2-3 850-1000 LBS. 64.00-71.00; CHOICE 2-3 1000-1250 LBS. 66.00-73.00; CHOICE 4, ALL WEIGHTS 60.00-66.00; SELECT AND CHOICE 1-2 850-1000 LBS. 62.00-70.00; SELECT AND CHOICE 1-2 1000-1250 LBS. 59.00-67.00.

HOLSTEINS: CHOICE 2-3 1000-1350 LBS. 57.00-63.00; SELECT & CHOICE 1-2 1000-1350 LBS. 52.00-56.00.

SLAUGHTER BULLS: 25 HEAD, STEADY. YIELD GRADE 1 ALL WEIGHTS 62.00-69.00; YIELD GRADE 2 ALL WEIGHTS 54.00-61.00.

BULLOCKS: 12. CHOICE 1-3 950-1150 LBS., 60.00-64.75; CHOICE 1-3 1150-1375 LBS., 62.00-66.75; SELECT 1-2 950-1250 LBS., 67.00-71.75.

COWS: 356 HD. TREND: STEADY. BREAKING UTILITY & COMMERCIAL 44.00-49.00; CUTTER & BONING UTILITY 46.00-52.75; CANNER & LOW CUTTER 45.00 & DOWN.

STOCKER & FEEDER CATTLE RECEIPTS: 90 HD. GOOD DEMAND. BEEF TYPES, STEERS 200-400 LBS. 85.00-107.00, BULLS 80.00-105.00, HEIFERS 80.00-95.00; 400-600 LBS. STEERS 78.00-90.00, BULLS 70.00-74.00, HEIFERS 75.00-81.00; 600-800 LBS. STEERS 74.00-84.00, BULLS 60.00-69.00, HEIFERS 67.00-74.50, 800-975 LBS. STEERS 65.00-73.00, BULLS 55.00-62.00, HEIFERS 60.00-67.00.

HOLSTEINS AND DAIRY CROSS, STEERS 200-400 LBS. 70.00-79.00, BULLS 70.00-74.00, HEIFERS, NONE; 400-600 LB. STEERS 60.00-68.00, BULLS 60.00-62.00, HEIFERS, NONE; 600-800 LB. STEERS 55.00-64.00, BULLS 50.00-59.00, HEIFERS, NONE; 800-975 LB. STEERS 51.00-57.50,

CALVES: 534 HEAD, TREND STEADY. CHOICE, 150-300 LBS. 85.00-103.00; GOOD 150-300 LBS. 75.00-90.00; GOOD, 100-150 LBS. 65.00-80.00; GOOD 80-100 LBS. 55.00-70.00; STANDARD 80-100 LBS. 50.00-60.00; STANDARD, 80 LBS., AND DOWN, 50.00 AND DOWN.

CALVES RETURNING TO THE FARM: WEAKER TREND. HOLSTEIN BULLS, OVER 100 LBS., UP TO 160.00, UNDER 100 LBS., UP TO 155.00; HOLSTEIN HEIFERS, OVER 100 LBS., UP TO 205.00, UNDER 100 LBS., UP TO 175.00; BEEF TYPE BULLS, OVER 90 LBS., UP TO 180.00; BEEF TYPE HEIFERS, OVER 90 LBS., UP TO 160.00.

SHEEP AND LAMBS: 101 HEAD, STEADY. CHOICE, 80-100 LBS., 65.00-72.00; 100-120 LBS., 60.00-67.50; 120 AND OVER 50.00-59.00; MEDIUM & GOOD, ALL WEIGHTS 60.00-75.00; LIGHT LAMBS 70.00-129.00; CULL LAMBS 45.00-55.00.

SHEEP: EWES, LEAN 30.00-39.00; EWES, FAT 24.00-32.00; YEARLINGS 40.00-47.00; BUCKS 22.00-30.00.

GOATS: 184 HD., SMALL 20.00-39.00; MEDIUM 40.00-64.00; LARGE 65.00-101.00.

HOGS, SOWS & BOARS: 140 HEAD, TREND 1.00 LOWER. HOGS, BARROWS & GILTS: 210-250 LBS. 44.00-46.00; 250-260 LBS. 44.00-45.00; 260-270 LBS. 42.00-43.00, 270-300 LBS. 40.00-42.50.

LIGHT HOGS: 140-180 LBS. 30.00-34.50; 180-210 LBS. 34.00-40.50.

SOWS: STEADY. GOOD SOWS UNDER 400 LBS. 33.50-39.50; GOOD SOWS OVER 400 LBS. 35.50-43.00; CULL SOWS, ALL WEIGHTS 33.00 AND DOWN.

BOARS: TREND STEADY. 180-210 LBS. 29.00-31.00; 210-260 LBS. 31.00-33.00; 260-300 LBS. 27.00-30.00; 300 LBS. AND OVER 29.00-30.00.

SALE EVERY MONDAY AT 2:00 P.M. & EVERY THURSDAY AT 1:00 P.M.

HAY & STRAW SALE EVERY MONDAY & THURSDAY AT 11:30 A.M.

SPECIAL FEEDER CATTLE SALE: FRIDAY, MARCH 4, 1994, AT 7:15 P.M. SPECIAL FEEDER PIG SALE: SATURDAY, FEBRUARY 26, 1994, AT 1:00 P.M.

Keister's Middleburg Auction
Middleburg, Pa.

Tuesday, February 22, 1994

Report Supplied by PDA

CATTLE 567.. PDA ..Compared to last Tuesday's market...sl. steers steady to .75 lower, cows uneven, mostly steady to .50 lower. STEERS: Choice 1050/1450 lbs. 70.00-73.10, few to 73.50, Select 65.00-69.00, few Standard 60.00-62.00. HOLSTEINS: Choice 1200/1500 lbs. 64.00-66.00, Select 60.00-63.25, Standard 53.50-58.50. HEIFERS: Choice 1050/1350 lbs. 68.00-71.00, few to 73.25, low dressing down to 65.00, Select 62.00-65.50. COWS: Breaking Utility and Commercial 47.50-52.00, couple to 56.25,

Cutter and Boning Utility 47.50-51.75, couple to 54.75, Canner and Low Cutter 41.50-47.25, few down to 40.00. Shells down to 35.00. BULLOCKS: one Choice 70.25, few Select 63.00-67.00. BULLS: Yield Grade No. 1 1200/1800 lbs. 55.00-63.00, one 67.00, No. 2 1040/2350 lbs. 51.00-55.00, couple to 56.50. FEEDER CATTLE: Steers: Medium and Large Frame No. 1 300/700 lbs. 74.00-83.00; Heifers: Medium Frame No. 1 350/650 lbs. 60.00-70.00; Bulls: Medium Frame No. 1 425/550 lbs. 64.00-74.00.

CALVES 199..VEALERS: few Choice 86.00-95.00, Standard and Good 70/95 lbs. 50.00-60.00, Utility 60/85 lbs. 40.00-50.00. RETURNED TO FARM: No. 1 Holstein bulls 90/125 lbs. 120.00-140.00, No. 2 85/120 lbs. 60.00-100.00, few to 120.00; No. 1 Holstein heifers 85/115 lbs. 160.00- 210.00, No. 2 80/150 lbs. 80.00-130.00. Beef cross bulls and heifers 75/110 lbs. 120.00-192.50.

HOGS 450..(2/21 & 2/22/94)..Bulk of supply sold on Monday and reported by auction. BARROWS AND GILTS: US 1 230/250 lbs. 48.00-49.50, US 1-2 220/250 lbs. 44.50- 47.75, US 2-3 210/300 lbs. 43.50-44.50, few US 1-3 175/200 lbs. 33.50-42.00. SOWS: US 1-3 350/655 lbs. 35.00-40.00, 300/610 lbs. 32.00-35.00. BOARS: 285/450 lbs. 28.00-30.00, few Thin 20.00-27.00.

FEEDER PIGS 182..Few lots US 1-3 30/35 lbs. 24.00-30.00, few lots 70/75 lbs. 37.00-41.00. --- per head.

SHEEP 49..Few High Choice and Prime 35/65 lbs. New Crop lambs 77.00-111.00, few 20/25 lbs. 121.00-190.00, few Choice 70/100 lbs. Woolled sl. lambs 59.00- 71.00. Slaughter sheep: 16.00-33.00.

GOATS 18...Large 45.00-67.00, few Small Kids 21.00-24.00. -- per head.

New Holland Horses

New Holland Sales Stables
New Holland, PA

Monday, February 21, 1994

Report Supplied By Auction

280 HEAD. MARKET STRONGER. WORK HORSES 915.00-1650.00. DRIVING HORSES 585.00-900.00. RIDING HORSES 565.00-1225.00. REGISTERED RIDING 910.00-1200.00. KILLERS, FEW 1010.00-1210.00, HEAVY WEIGHTS 840.00-930.00, LIGHT WEIGHTS 510.00-770.00. PONIES: 155.00-300.00. LARGE PONIES 355.00-420.00. COLTS 270.00-435.00.

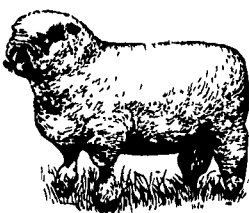
Lebanon Valley Livestock

Fredericksburg, Pa.

Tuesday, February 22, 1994

Report Supplied by PDA

SALE NOT REPORTED FEBRUARY 22, 1994; DUE TO SEVERE WEATHER CONDITIONS!



Alfalfa Question:
Do you have to sacrifice yield and quality to get winterhardiness?

The Answer:
No.

CimarronVR and Belmont varieties stand-up to cold weather and harsh winter conditions — without sacrificing yield or quality!

These varieties can be harvested earlier in the spring and later in the fall to give higher yields, and a more even distribution of yield over the season. And because they are vigorous, they can be cut more frequently to give softer, leafier hay.

Why settle for late-starting, slow-growing, short-season alfalfa. Choose CimarronVR or Belmont — premium alfalfa varieties that not only provide excellent winterhardiness, yield and quality — but also combined resistance to all the major diseases, insects, and nematodes that attack alfalfa. Proven performance.

CimarronVR
The High-Yield, High-Quality Alfalfa

BELMONT
Fast Growing Alfalfa

Contact your nearest dealer or

Wetsel Seed Company, Inc., Harrisonburg, VA

Out of State
800-336-5807

Virginia
800-572-4018

Local
703-434-6753

Purina Mills



ARE YOU A PORK PRODUCER WHO:

- Achieves A 3:14 or Less Feed Conversion
- Produces 18 Pigs/Sows/Yr
- Lean Cuts of 56% or Greater
- Wants To Receive Profits Above A Base Contract Payment.

THEN: Our Hog Contracts are Tailor Made For You

For More Information Call
1-800-873-5300



Leaner pork for leaner people.