

4 BUILDINGS AND SUPPLIES

Pallet Rakes, new condition, consists of: (61) 13' up-rights, (79) 14' up-rights, (39) 18' up-rights, 42" depth, (600) 9' bars, 2500 lb/pallet capacity, new price \$350/section, sale \$75/section. Ask for Doug (610)926-1311

Pre-engineered steel buildings for Agricultural, Commercial or Churches Authorized Gulf States Dealer We will build from your plans or will design. **WEAVER CONSTRUCTION**, East Earl, PA. 717-445-5165

STEEL BUILDINGS, all types and sizes. Call for current "Specials" 410-329-6757.

200+ year old barn, 2 story, standing, many large oak beams and trusses. 100's of large slate shingles and siding. All in excellent condition. Best offer. **(410) 838-8722**

Fiberglass WALLBOARD PANEL

White & Colors
4'x8' - 4'x9' - 4'x10'
.090 A-B-C Grade
30¢ - 45¢ - 48¢ Sq. Ft.

ALSO: Full Line Of Roofing & Siding Large Inventory In Stock! Call For Low Prices!

A.B. MARTIN ROOFING
Ephrata, PA 17522
717-354-5076
Pennyan, NY
315-836-0944

POLE BUILDINGS

Save money by cutting out all unnecessary costs such as office overhead, salesman's commissions and contractor mark-up on materials. Deal with one man who will design and build your building. Call Chris at 1/800 842-0276 22 Years of Building Quality Pole Buildings

T & G FLOORING

2x8 Southern Yellow Pine 38¢
Accepting Orders Now

Call (814) 349-8228

John Koser's

FOR YOUR HOME IMPROVEMENT NEEDS

LOCATED NORTH OF ELIZABETHTOWN
OPEN MON.-FRI. 8 TO 6; SAT. 8 TO 3

- Kitchen Cabinets
- Plywood & Waferboard
- Asphalt Roofing Shingles
- T-1-11 Siding
- GP Insulation
- Railroad Ties
- Shutters
- Replacement Windows
- GP Vinyl Siding

Metal Roofing — Painted or Galvanized

717-367-0283



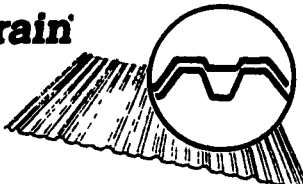
SMUCKER CONSTRUCTION
AGRICULTURAL - RESIDENTIAL
SPECIALIZING IN POLE BUILDINGS
DAN SMUCKER

135 CHURCHTOWN ROAD 717-768-8606
NARVON, PA 17555

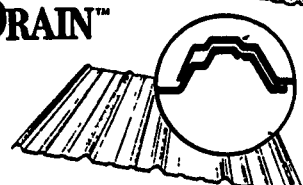
Roofing & Siding

Channelrain

Available in 12 Colors:
Large Inventory In Stock:



CENTURY DRAIN™



NEW PAINT

Best Color Retention in the Industry
Full Line: Nails, Trim, Screws, Soffit, Fascia, Plyco Doors & Windows, Side Rails, Etc.
Note: Same Day Delivery Or Pick Up Most Cases!

A.B. MARTIN ROOFING
150 Slate Road, Ephrata, PA 17522
(215) 445-6885
(717) 354-5076

NEW SHIPMENT Desert Storm Surplus EPOXY & POLYURETHANE PAINT

\$14/gal. White Epoxy - 2 part
Brown }
\$12/gal. Green } Single part
Black } Polyurethane

This paint is made by Pratt & Lambert and is of the highest quality available. Quantities are limited - buy now while it's available. 10 gallon minimum.

717-394-4980
9:30 AM - 5 PM

BARNs • ARENAS • SHEDS • GARAGES WAREHOUSES FACTORIES

"Steel Top" Buildings

FREE w/Each Building w/ This Coupon

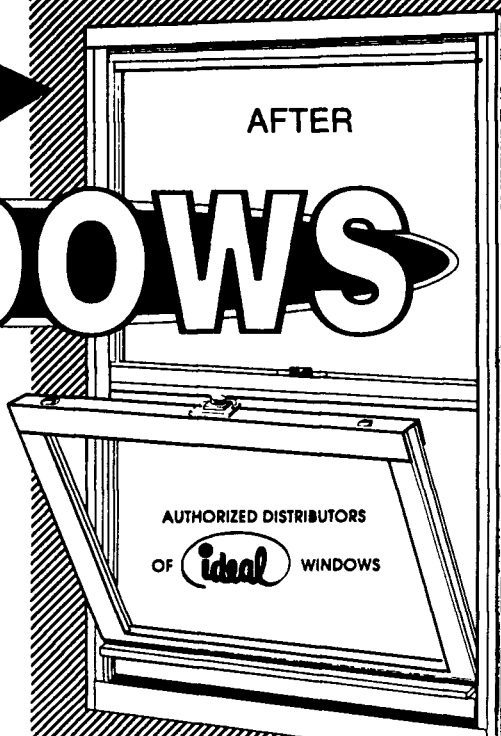
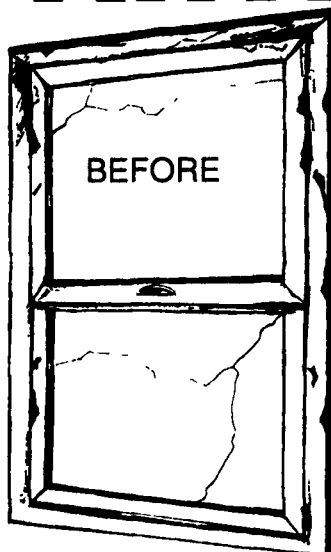
manufactured & erected by **H.B. SMITH CONSTRUCTION CO.**
223 Warner Road, Columbus, NJ 08022
(Lease Financing Available)

Structural Steel or Complete Building Packages

609-267-5571 or FAX 609-267-8135

* A Division of H.B. SMITH MACHINE CO., INC.
PRIDE IN WORKMANSHIP - PRODUCT GUARANTEE - COURTEOUS SERVICE

VINYL REPLACEMENT WINDOWS



WINDOWS

- 7/8 inch insulated glass on vinyl
- Half screens • Grids optional
- Low E glass optional
- Tilt-in sash for easy cleaning
- Fast, efficient insulation

ALSO AVAILABLE:
sliders, casements, awnings

- * 6" K-STYLE SEAMLESS GUTTERS
- * HALF ROUND GUTTERS
- * SOFFIT & FASCIA
- * VINYL & ALUMINUM SIDING
- * 5" K-STYLE SEAMLESS GUTTERS
- * ASPHALT SHINGLE ROOFING
- * CORRUGATED METAL ROOFING

SENENIG'S SPOUTING

809 Glenwood Dr., Ephrata, PA 717-733-7160 800-247-2107

Wholesale or Retail

MADE IN THE U.S.A.

BLACK BEAR TRUSS CORP.

"Our Trusses Bear Up"

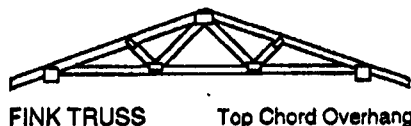
Contact your nearest dealer or call **1-800-326-9689**

- ✓ On-Site in a Few Days
- ✓ Crane Optional with Delivery
- ✓ Custom Built with MSR Lumber
- ✓ First Quality
- ✓ Reliable Schedule
- ✓ Competitive Prices
- ✓ Personal Service



MACHINE STRESS RATED
MSR-2
2250 f1.9E

It Pays To Use MSR Lumber



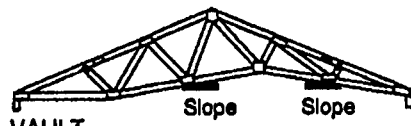
FINK TRUSS Top Chord Overhang



S66 - DOUBLE HOWE SCISSORS



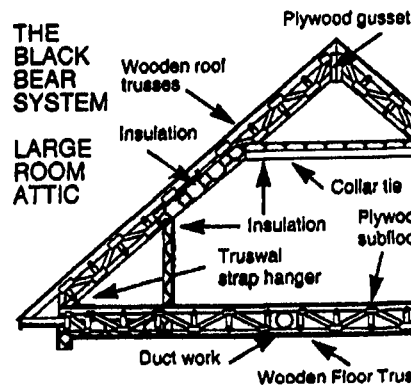
DOUBLE CANTILEVER Bottom Chord Overhang



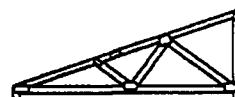
VAULT Slope Slope



STUDIO WITH TWO BEARING POINTS



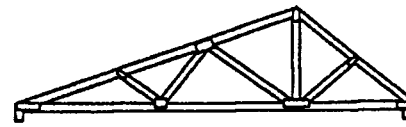
THE BLACK BEAR SYSTEM
Labels: Plywood gusset, Wooden roof trusses, Insulation, Collar tie, Plywood subfloor, Truss strap hanger, Duct work, Wooden Floor Truss



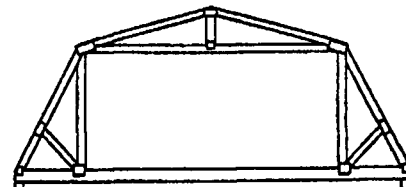
MONO



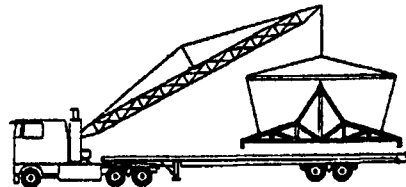
FLOOR TRUSSES



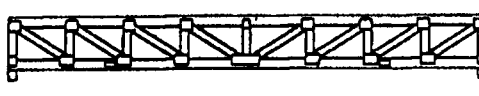
DUAL SLOPE (DOUBLE PITCH)



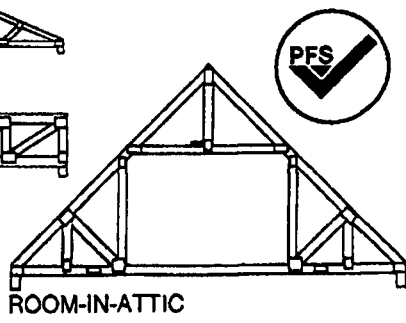
GAMBREL-IN-ATTIC



3 PIECE RAISED CENTER BAY



FLAT (PRATT)



ROOM-IN-ATTIC

