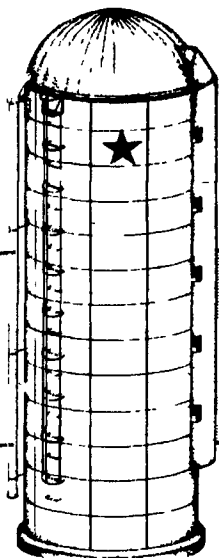


3 SILOS AND UNLOADERS

★ STAR SILOS ★



will give you the best price possible in service repair and parts for Jamesway, Little David, Van Dale unloaders: Call us if you need a quote on guniting, roof repairs, silo doors, chutes replaced & safety cage installed.

We offer poured concrete silos, poured manure systems, bunker silos, top and bottom unloaders, Lancaster Level Flo, Rissler conveyors & etc.

"The Winter Weather Of 1994 Greatly Increases Your Appreciation Of The Tower Silo."

Call Today!

717-866-5708

J. Robert Brubaker 717-464-3136

John Swope 717-933-4758

Just Arrived
Used Rissler Model 75 Mixer
Good Condition

Chain Link Fence, new, slightly imperfect, heavy 9-gauge galvanized. 3'-\$90/ft, 4'-\$1.00/ft, 5'-\$1.55/ft, 6'-\$1.65/ft, 7'-\$1.85/ft, 8'-\$1.95/ft Call 717/822-7820 7-8am or leave message

Resawn Long Leaf Yellow pine and resawn chestnut flooring, 35'x60' chestnut barn, antique white pine flooring 717/374-7122

Cramer's Discount Roofing, lowest prices in 3 states See display ad section 4 (717)567-6782

FLOORING- New kiln dried T&G, 2x8 Y.P. Can deliver. NOAH SHIRK SAWMILL 717-354-0192

FLOORING "Golden Oak", (Ash), Kiln-Dried, T&G, 5" face, 1/2" x5"x6"-12", 5000 sq ft Priced right!! 610-565-6038

100 year old brick, 15c a piece Claw footed bathtubs and various other used building materials (717)463-3381

36X24 Mezzanine for Warehouse \$10,000 OBO, 16" Belt Elevator \$2500 (717)286-5306

400 Amp, 3-phase, double throw disconnect, \$500, 400 Amp, 3-phase disconnect, \$200 If interested contact Marvin or Brian at 717/354-4981.

5HP, 3-phase Sump Pump w/4" outlet, \$500, 1/2 HP single phase, 2" outlet sump pump w/50' hose, \$100 If interested contact Marvin or Brian, 717/354-4981

Allied Steel Buildings, Commercial, Industrial, Agricultural. Building YOUR Business is OUR Business. A.S. HOOVER INC 3125 Manor Road, Coatesville, PA 19320 1-800-942-2591, 215-942-2591

Antique building materials, beams, wide pine boards, flooring, doors, etc. 717/249-2304

"B" Grade Glass Board and Plastic Sheets up to 1/4" Thick, (Special 4'X8'X1/4" Plastic Sheets \$12.00) Glenn Beidler, Freeburg, PA, Snyder County (717)539-8993

Black cement block sealer available at no charge (717)397-7695

Outside Wood Burning Furnaces, burn green wood, pine, and coal Sealed system w/antifreeze Aqua-therm boilers on display Marysville, Suttons 717/957-2047.

PAINT \$3 gal, latex or oil base. Dauphin Co Call 717/944-5389

Original floor, grainery boards, 2" flooring, barn beams, tobacco sheds, siding (717)229-2806 mobile in (717)880-4549

New and Used Structural Sch 40 Pipe For Sale 1/2" thru 8" Pipe. J & L Equipment St. Thomas, PA 717-369-2637

Paying Cash Top Dollar For Log Cabins, Bank Barns, Roof Boards & Original Floors (Wide) 717-229-2806

Congola Shelving
Approx. 1000 Lin. Ft. of Shelving. Free Standing and Wall Units. Included are Baskets, Hooks, Hangers, End Caps, Pegboard.
Everything Complete And In Storage For Winter. Will Sell For \$10,000 Or Best Offer.
For Inquires Call (717) 444-7230 Ask For Tim

4 BUILDINGS AND SUPPLIES

FOR SALE 34 church pews, excellent condition, length 14 feet, solid Chestnut wood, could be dismantled for lumber Phone 717 235-7704

FREE FOR REMOVING 47'x150' equipment shed. 215/598-7600 ask for Greg Shorten

GEBHART'S POLE BUILDINGS: Let quality and value stand for you Custom design and built, commercial, residential or agricultural Put your building up today 717-259-9438

Let Capital Steel Buildings supply you w/affordable, easily erected steel buildings Custom designed, any size Call today for free quote 1(800)207-8283



SOMETHING TO CROW ABOUT... LOW CLASSIFIED RATES WITH EXCELLENT RESULTS!

DON'T IGNORE IT - RESTORE IT!
Masonry/Restoration specializing in restoring old stone/brick houses and barns. Also Laying Eldorado Stone
J&J Restoration 717-442-4773

WANTED TO BUY
Old Loghouses, Summer Kitchens, early timberframe houses for removal, interior salvage of early brick & stone houses, Indian doors, wide attic flooring, house joists, house hand-hewn rafters, wide thick roof boards, top dollar paid - travel everywhere
215 857 1002 anytime NO BIDS OR BARN PARTS

FACTORY CLEARANCE STEEL BUILDING SALE
36x72, 48x90, 80x125, Other Sizes, New, Never Erected. Limited Time. Call Scott 215-932-9001

• Pole Buildings • Metal Frames
• All Steel Buildings • Mini Storages & Small Span Buildings (5'-20')
• Steel Roofing - Retro Fit
All Sizes • Insured • Free Estimates



THE HAMILTON CO.
Sales/Erection
(215) 679-9676



Pole Buildings

S&H Buildings

7 Dutchland Ave Ephrata, PA 17522

717-733-8550 717-733-9593

Pole Buildings

30x40x10
1-10x10 Slider
1-Service Door \$6,995 Erected
24x32x8
1-9x7 Overhead Door
1-Service Door \$5,195 Erected
Other Sizes Available

Call Anytime
1 (800) 352-1782
Cheyenne Buildings

M GENERAL & CONSTRUCTION G Pole Buildings

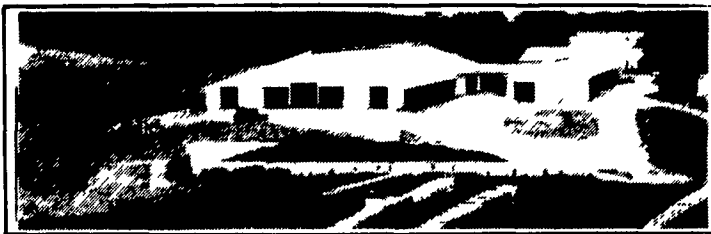


- Dairy Facilities • Implement Sheds
- Horse Barns • Garages
- General Repairs & Remodeling
- Concrete • Roofing • Siding

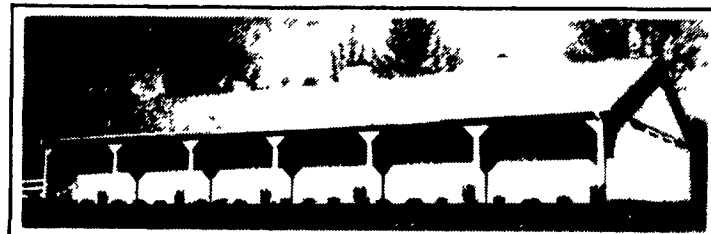
Phone:
Nolan Garman - (717) 270-1841
Glenn Martin - (717) 866-4695

AGRI-INC.

Custom Built Farm Buildings Designed To Your Needs



DAIRY COMPLEX



HORSE STALL BARN

Let Our Experience Work For You

- Dairy Complexes And Replacement Stock Facilities
- Horse Stall Barns And Riding Arenas
- Workshop And Machinery Storage Buildings
- Timber Column Buildings For Light Commercial



AGRI-INC. The Construction Professionals

151 E. Farmersville Rd., Ephrata, PA 17522
(717) 354-4271

Serving The Agricultural Industry For Over 25 Years

