

**Delmarva Broiler/Fryer Market**  
Wednesday, February 23, 1994

Movement of ready-to-cook whole birds was light to moderate. Seller offerings were adequate to fully adequate and in the closer balance on under 3 pound sizes. Live supplies remained moderate, instances light. Weights were in a full range, and were heavier than desired at several plants. Processing schedules were reduced slightly, but still remained very heavy. Less than trucklot asking prices were unchanged at 52 to 64 cents. Trade sentiment was no better than steady. In the parts complex, breast items varied from closely cleared to long. Wings were in fairly good balance. Leg items were slow to clear some plants.

ESTIMATED SLAUGHTER OF BROILER/FRYERS IN DELMARVA (000)

ESTIMATED ACTUAL AVG. WEIGHT ACTUAL AVG. WEIGHT  
02/23 02/21 02/21 02/16 02/14 2,210 1,769  
4.73 2,335 4.59.

\*BROILER/FRYER CURRENT NEGOTIATED PRICES FOR IMMEDIATE DELIVERY INCLUDES MOSTLY MULTIPLE-DROP SHIPMENTS OF BRANDED AND WING TAGGED TO NEW YORK CITY FROM DELMARVA.

BRANDED U.S. GRADE A RANGE 47-64 WEIGHTED AVERAGE 53.18 NO. OF BOXES 9,988.

\*7 of 9 plants reporting.

**BANTAMS BY THE LB.** .20-1.00.  
**ROASTERS** .20-.50.  
**ROOSTERS** .15-1.20.  
**GEESE** .25-1.10.  
**DUCKS** .35-1.10.  
**RABBITS** .40-1.75.  
**PIGEONS EACH** 1.50-2.70.  
**GUINEAS** 1.00.

**WHITE EGGS: EXTRA LARGE & JUMBO** .56-.75; **LARGE** .60-.73; **MEDIUMS** .35-.55; **PULLETS** .35.  
**BROWN EGGS: EXTRA LARGE & JUMBO** .55-.78; **LARGE** .49-.56.

**Diffenbach Auction Center**

New Holland, Pa.  
Monday, February 21, 1994  
Report Supplied by Auction  
TOTAL LOADS: 199.  
ALFALFA: 63.00-165.00.  
MIXED HAY: 87.00-155.00.  
TIMOTHY: 95.00-140.00.  
CLOVER: 83.00-117.00.  
ORCHARD GRASS: 91.00-120.00.  
STRAW: 115.00-167.00.  
EAR CORN: 95.00-120.00.  
SOYBEAN BEDDING: 72.00-102.00.  
FIREWOOD: 2 LOADS 70.00-72.00 LOAD.

**Greencastle Livestock Market**

February 17 and 21, 1994  
Hay & Straw  
Report Supplied by Auction  
50 LOADS.  
ALFALFA: 78.00-130.00.  
TIMOTHY HAY: 69.00-127.50.  
MIXED HAY: 67.50-111.00.  
ORCHARD GRASS: 76.00-100.00.  
BROME GRASS: 95.00-135.00.  
STRAW: 100.00-125.00.

**Heinsey's Poultry**

Roots, East Petersburg  
Tuesday, February 22, 1994  
PRICES PAID PER POUND, EXCEPT AS NOTED RANGE: Muscovy Ducks - Drakes .80 - 1.04 Muscovy Ducks - Hens .80 - .92 Pekin Ducks .40 - .64 Red Fowl 4-4.5 .50 - .74 Red Fowl 5-6 .60 - .94 Crossbred Fowl 5-9 .30 - .72 Crossbred Roosters 4-6 .60 - .92 Crossbred Roosters 7-11 .40 - .84 Guinea Fowl .60 - .85 Banty Roosters 2.50 - 5.00 ea. Banty Hens 1.25 - 2.75 ea. Leghorn Hens .16 - .24 Silkies 3.50 - 4.75 ea. Geese 9-12 .30 - .42 Pigeons 2.25 - 2.75 ea. White Pigeons 3.50 - 4.20 ea. Rabbits 4-6 .80 - 1.18 Rabbits 7-11 .80 - 1.04 Bunnies 1.00 - 2.50 ea. Guinea Pigs 2.00 - 6.50 Goats 40.00 - 52.00 ea. Kid Goats 18.00 - 24.00 ea. Doves 2.50 - 4.00 ea. Pullets 4-6 .30 - .54.  
Total Coops Sold 808.

**National Egg Market**

Wednesday, February 23, 1994  
NATIONAL EGG MARKET - AT A GLANCE: Prices were unchanged. The market tone was mostly steady. Demand was moderate to occasionally good. Supplies were adequate or available, and generally well balanced. Breaking stock supplies were adequate for the fair demand, and the undertone was steady. Live hen supplies were light to adequate for the moderate demand, and the market tone was steady to fully steady.



**Good's Hay**

Leola, Pa.  
Wed., February 23, 1994  
Report Supplied by Auction  
TOTAL LOADS: 14.  
ALFALFA: 87.00-142.00.  
MIXED HAY: 115.00-145.00.  
STRAW: 122.00-160.00.  
TIMOTHY: 127.00.  
CORN: 100.00.

**Belleville Hay**

Wednesday, February 23  
Belleville, PA  
Report Supplied by Auction  
ALFALFA HAY: 80.00-105.00.  
MIXED HAY: 85.00-125.00.  
STRAW: 142.50-160.00.  
CORN: 107.50.  
OATS: 2.00 BU.

**Grantsville Livestock**

Grantsville, Maryland  
Report Supplied by Auction  
Sat., February 19, 1994  
STOCK BULLS AND STEERS 200-500 LBS. 60.00-90.00.  
STOCK HEIFERS: 55.00-79.00.  
SLAUGHTER STEERS GOOD TO

CHOICE 66.00-69.50; MEDIUM TO GOOD UP TO 65.00.  
HOLSTEIN STEERS GOOD 56.00-64.00; LIGHT 50.00-56.00.  
SLAUGHTER HEIFERS GOOD TO CHOICE, NONE AVAILABLE; MEDIUM TO GOOD 54.00-65.00.  
BULLS HEAVY 55.00-60.00, LIGHT 50.00-58.75.  
COWS FEW HIGH DRESSING 46.00-51.50, UTILITY HOLSTEIN 44.00-48.50, CANNERS 36.00-45.00, CULLS 35.00 AND DOWN.  
VEALS GOOD TO CHOICE 80.00-96.00, MEDIUM TO GOOD 60.00-84.00.  
BOB CALVES: 50.00 AND DOWN.  
HOLSTEIN BULL CALVES RETURN TO FARM 90-120 LBS. 85.00-125.00.  
HOLSTEIN HEIFER CALVES RETURN TO FARM 100-120 LBS. UP TO 125.00.  
BEEF CROSS CALVES RETURN TO FARM UP TO 125.00.  
HOGS TOP QUALITY 45.50-46.50; HEAVY 44.00-45.25, LIGHT 42.00-44.50, FEEDER PIGS BY THE HEAD 15.00-38.00.  
SOWS 25.00-37.50.  
MALE HOGS 25.00-27.50.  
LAMBS 60.00-87.00, CULLS UP TO 60.00  
SHEEP 25.00-42.00.

**Hackettstown Poultry & Egg**

Hackettstown, N.J.  
Report Supplied by Auction  
Tuesday, February 22, 1994  
Report Supplied by Auction  
HEAVY FOWL .15-1.10.  
LIGHT FOWL .05.  
MIXED FOWL .80-.90.

**HIGH PRESSURE WASHING AND DISINFECTING**

- Breeder Houses
- Layer Houses
- Pullet Houses
- Turkey Houses
- Hog Finishing Barns
- Sow Units
- Dairy Barns
- Veal Pens
- Broiler Houses

We Spray For All Types Of Beetles and Insects That Cause Structural Damage to Your Poultry House

For More Information Call:

**BEITZEL'S SPRAYING**

Witmer, PA 17585 717-392-7227 or  
Toll Free 1-800-727-7228 7:00 AM to 5:00 PM  
CERTIFIED COMMERCIAL APPLICATORS  
LICENSED Spraying Since 1961 INSURED

**Kiln Dried WOOD SHAVINGS and SAWDUST**

- Great for dairy or horses
- Delivered in trailer load lots
- Year round supply
- Reasonably priced

717-653-5935

*JD Martin Inc.*

Mount Joy, PA

**NOTICE TO MY TOBACCO FARMER FRIENDS**

We are now giving the 41 farmers a chance to bring in their tobacco & we will grade & pile according to color. At this time we do not have a price but will try & sell as soon as we have enough volume. We hope to get some good crops.

Notice - We will not unload any tobacco with paper on bales.  
Receiving Mon., Wed. & Fri. from 8 to 3. Please call for unloading time.

**SOUTHBOAT LEAF TOBACCO**

661 Vintage Rd. 24 Meadow Ln, PO Box 192  
Christiana, PA 17509 Paradise, PA 17562  
Answering Service - 610-593-6729

**CONTRACTS**

**AVAILABLE IMMEDIATELY**

Supplement Your Present Farm Income

Commercial Layer and Pullet Contracts Available  
Good Long Term Investment



AUTHORIZED  
**Big Dutchman.**  
DISTRIBUTOR



**HERSHEY EQUIPMENT CO.**

255 Plane Tree Drive  
Lancaster, PA 17603  
(717) 393-5807

IF IT'S WORTH YOUR INVESTMENT, TRUST IT TO HERSHEY

**NEED TO CUT THE FEED BILL?**

**NEW DAIRY BLEND COMPLETE AND CONCENTRATE FEEDS**

**COMPLETE FEEDS**

**CONCENTRATE FEEDS**

#79516  
Dairy Blend Flakes  
16% All Natural  
\$169<sup>28</sup>

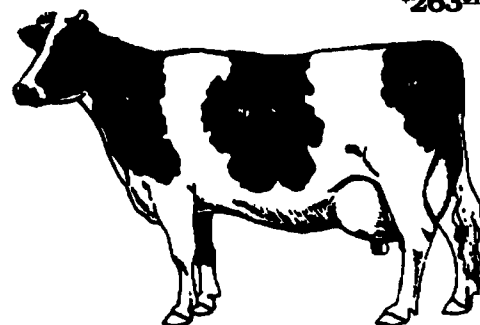
#51232  
32% All Natural Protein Pellets  
\$226<sup>42</sup>

#79518  
Dairy Blend Flakes  
18% All Natural  
\$178<sup>28</sup>

#51238  
38% All Natural Protein Pellets  
\$252<sup>28</sup>

#79520  
Dairy Blend Flakes  
20% All Natural  
\$187<sup>42</sup>

#50734  
34% All Natural Protein Pellets w/Steam Flaked Soybeans  
\$263<sup>44</sup>



Bulk Feed Available in 1 to 24 Ton Loads

Feed prices for Week of February 28 and Subject to Change Weekly with Grain Market  
Includes 8 ton volume discount and cash discount of 2 1/2% due 15th following month. Deduct additional \$3.00 per ton if paid in 10 days

PENNSYLVANIA CUSTOMER SERVICE DEPARTMENT OPEN 24 HOURS A DAY  
PA 1-800-733-0166 • MD, DE & NJ 1-800-233-0202



**pennfield feeds**