

# PUBLIC AUCTION

**SAT., MARCH 26, 1994**  
9:30 a.m.

Located along the Rebeck to Pitman Road, 1 mile East of Leck Kill, PA (10 miles East of Red Cross and Route 225.) Upper Mahanoy Township, Northumberland County.

## MAHANTONGO VALLEY REAL ESTATE

Nice 1 1/2 story country home, 1st floor, kitchen, living room, 2 bedrooms, full bath, heated enclosed porch. Open stairway to 2nd floor with 2 bedrooms, 2 car garage in basement. Oil h.w. heat, natural woodwork, vinyl siding. Situated on 1.17 acres more or less.

Plan to inspect this desirable country property. Arrange your financing and be prepared to bid at auction. Inspection or information, phone 425-3107.

Terms: 10% down day of auction, balance due in 45 days. Real Estate to be offered at 12:00 Noon.

## ANTIQUES - COLLECTIBLES HOUSEHOLD

TERMS: Cash or PA Check  
Lunch

Estate of

**IRENE SCHREFFLER**

Executor: Darvin P. Schreffler

Mark J. Jones Auctioneering Service

Phone: (717) 286-0052

• License #AU 1595-L

Jeff Dunkelberger

• License #AU 3043-L

## Public Auction Register

Closing Date Monday 5:00 P.M.  
of each week's publication

TUES. APR. 12 - 11AM, 57 Acre Farm. Located At 2040 Pine Drive, East Lampeter Twp., Lancaster Co. Terms By, John P. & Miriam S. Speicher. Homing Farm Agency, Inc.  
THUR., APR. 14 - Located 4 Mi. N. of Millintown,

along Rt. 35, Juniata Co. Complete Dispersal of Dairy Cattle & Farm Machinery. Fleda G. Wilson, Owner. Long's Auction Service.  
THURS. APR. 14 - 7:30PM Spring Promise show calf

## PUBLIC AUCTION OF 13.6 ACRE FARMETTE PLUS THREE BUILDING LOTS HOUSEHOLD GOODS AND TOOLS

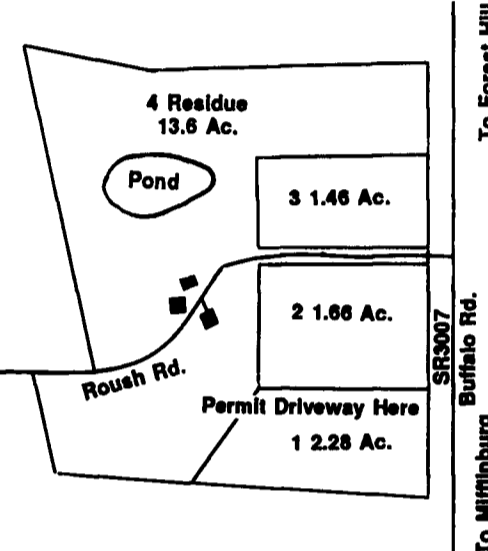
**FRI., MARCH 11, 1994**

At 9:00 A.M., Real Estate At 12:30 PM

Location 2 miles north of Millintown, on Buffalo Rd. from Lewisburg take Route 45 West to Millintown turn right, at Coastal Mart, 2 miles to sale site, West Buffalo Twp., Union County, Pa.

### REAL ESTATE

13.6 Acre Farmette Plus Three Building Lots, Ready To Build



Lot #1 2.28 Acre; Lot #2 1.66 Acre; Lot #3 1.46 Acre. Will be offered separate or all together.

Building on 13.6 acre, 2 1/2 story brick house with 2 car garage, FIRST FLOOR, living room, dining room, kitchen with range, dishwasher, refrigerator, carpets, 1/2 bath, laundry, sun porch, 200 amp elec. service. SECOND FLOOR 3 bedrooms w/closets, 1 full bath, walk in closet, hot air oil heat, 2 good wells. Note: House in real nice condition.

Outbuilding with elec. and water 40x60 bank barn, good cond.

Pond, in meadow, fruit trees. NOTE: Would make a nice horse farm, nice country setting.

### HOUSEHOLD GOODS

Breakfast set, table, 4 chairs, rocking chair, dresser, old cupboard with flour bin, odd ends, materials, 750 Sharp copyling machine good condition, nice 10'x14' produce stand, plus produce goods, etc.

### FARM MACHINERY AND TOOLS

10' transport disc 3 pt. 3 bottom plow, 2 row McCormick corn planter, small trailer, etc. 12' MGS 4000 GVWR dual wheel trailer.

### TOOLS AND CARPENTRY SUPPLIES

10' Tapco Pro-II alum. brake, Hilti screw shooter, Porter Cable drill, 1 Black & Decker 13 volt cordless drill, 1 Ryobi 12 volt cordless drill, Paslode framing nailer, Senco framing nailer, Pole jacks, 10" Delta miter saw, 50,000 BTU master heater, 2 white side boxes for pickup trucks, rack for truck, job boxes, rolls of 24" coil stock, windows, cabinet, insulated doors, rails for siding doors, 110' peg board wall shelving, 22x28 Velux br. skylight w/flashing kit, casement windows, 2-10x10 steel insulated row up doors w/openers. Lumber, Paint, nails, etc.

AUCTIONEER NOTE: TERMS 10% due at auction, balance 30 days, Open House. Inspection of property by appointment or Open House Feb. 26 or March 5 1 to 4 PM For land plotting and details, call auctioneer 717-656-8793 or owner 717-966-3750.

Sale Order: Tools, Farm Machinery 9:00 AM and household goods 12:30 Real Estate.

Terms by  
**LUKE & KATHRYN SHIRK**  
717-966-3750

Auction Conducted By  
C.W. Shirk Auction Service  
Lic. #2750 Ph. 717-656-8793  
Not Responsible For Accidents  
Food At Auction

sale. Lebanon Area Fairgrounds, Leb. Pa. Harry H. Bachman, auct.

FRI. APR. 15 & SAT. APR. 16 - 5PM, Sat. 9AM. Two Day Annual Farm Equip. Contractor's Equip., Vehicles, Hay, Straw, Sm. Row Items, Furniture, Household, Consignment Auction. Located Miller's Auction Center, Bethel, Pa. Dwight D. Miller, Auct.

FRI. APR. 15 - 1:30PM, (This Change Is Due To Good Friday). State Graded Feeder Pig Sale. Located At Carlisle Livestock Market, Inc. Exit 12 South-Off I-81. Left Onto Alexander Spring Road. (717) 249-4511.

FRI. APR. 15 - 7PM Club pig sale - 100 head, Cambria Co. Fairgrounds, Keith Bard. Harry H. Bachman, auct.

SAT. APR. 16 - Modern Farm Machinery Auction. Located Midway between Sunbury & Snyderdon. Owner Joanna M. Mummey. Bryan D. Imes, auct

SAT. APR. 16 - Brandywine Cattle Co., Spring Angus Bull & Cow Sale - Doe Run, Chester Co., Pa. Harry H. Bachman, auct.

SAT. APR. 16 - Peiffer Hill Consignment Sale of Lawn & Garden Equipment & Tractors. Located Church St. thru Reamstown to Red Run Rd. Turn Left to Steffy Rd. Turn Left to Auction on Left. Kline, Kreider, Good, Aucts.

SAT. APR. 16 - Public Auction Of Lot, Good Working Tools, Antiques, Riding Vower, Lumber. Located At 29 E. Main Street, Rein-

olds, Pa. For Ruth Fasacht. Snyder's Auction Service.

SAT. APR. 16 - 8:30AM 21st Annual Equip. Auction. Held at Garden Spot Auto Auction, 1605 Apple St. (1 mile W of Ephrata along Rt. 322). J. Omar Jandis Auction Service.

SAT. APR. 16 - 9AM Cohocton, NY. Pirrung's Twentieth Annual Spring Auction of Farmer Owned Equipment! Pirrung Aucts., Inc. Wayland, New York. 716-728-2520.

SAT. APR. 16 - 9AM Real estate, personal property, antiques & collectibles for the Estate of Stella Hetrick, Beavertown, Pa. Hassinger/Courtney, aucts.

SAT. APR. 16 - 9AM Valuable Household Goods & Antiques. In Strasburg at 36 Lancaster Ave. turn off W. Main St. at Y on Lanc Ave. or (Strasburg Pk) Lanc. Co., Pa. by Verna H. Farrel. Robert E & Jeffrey R. Martin, auct.

SAT. APR. 16 - 9:30AM, Harpster Annual Consignment Farm Auction. Located Rt 45 On Huntingdon & Centre Co. Line, 9 Miles South Of State College, Pa. Aucts. Ron Gilligan & Son #AU339L & AA2223L.

SAT. APR. 16 - 10AM 1 Mile N. of Pillow, watch for auction sign along Rt 225 at Bings Road between Pillow and Mandata, 15 miles S. of Sunbury. Farm Equip & Trucks, Household Items, Antiques & Collectibles. Benjamin M. Shaffer & Alma M. Shaffer, owners Deibert, Mike & George,

THURS. APR. 19 - 9AM, Real Estate, Store Eq., Inventory & Supplies. Located Windy Acre Store, 1/2 Mile East Of Madisonburg, Pa., Or 3 Miles West Of Rebersburg, Pa., Along Route 192. Owners, Ben S. & Naomi Fisher. Mark Glick, Aucts.

WED. APR. 20 & THURS. APR. 21 - Large Two Day Sale Of Farm Equipment, Etc. At Our Place Of Business Six Miles South Of Chambersburg, Pa. And One Mile East Of Marion, Pa. Owners And Managers, Marion Auction Service, 5174 Horst Rd., Chambersburg, Pa. 17201.

FRI. APR. 22 - 5PM, Annual Spring Cows & Fishing Equip. Consignment. Located Dwight D. Miller, Auct., Centre, Bethel, Pa.

FRI. APR. 22 - 7PM, Feeder Cattle. Located New Holland Sales Stables Inc., 101 W. Fulton St., New Holland, Pa. Norman Or David Kolb, Aucts.

FRI. APR. 22 - 7 PM White Oak Mill & Pro-Genetic Feeder Pig Sale, Manheim Community Farm Show Bldg, John D Stauffer, auct

SAT. APR. 23 - 1 1/2 Acre Real Estate. Located Along Union Grove Rd., 1/2 Mile East Of Terre Hill. Owners, Bethany Menn. Church. Nevin Martin & Sons, Auct.

SAT. APR. 23 - 8:30AM, Schuylkill Co. Fair Annual Spring Cows. Selling Tools, Antiques, Farm Machinery, Etc. 12 Noon. Farm Toys & Winross Trucks. Located Summit Station, Pa.

## PUBLIC SALE

DOUBLE DWELLING, GARAGE & WORKSHOP  
REAL ESTATE - ZONED MIXED USE,  
ANTIQUES, HOUSEHOLD GOODS,

## TOOLS

LEOLA  
**SAT., MARCH 5, 1994**  
AT 9 A.M.

REAL ESTATE AT 1 P.M.  
TOOLS TO BE SOLD AT 9 A.M.

Located at 292 & 294 E. Main St., Leola, Upper Leacock Township, Lanc. Co., PA (Next to Turkey Hill)

2 1/2 STORY DOUBLE DWELLING  
Call 717-738-1856.

## FURNITURE

Marble Top Dresser; Oak Desk & Dresser; Oak Swelled Front Chest of Drawers; Breakfast Set; Hutch; Chiffonobe; Kitchen Cabinets; Highchairs; Beds & Wardrobes; 2 Franklin Gas Stoves; Fisher Wood Stove; Exercise Machine; School Desks; Parlor Tables; Trunks; Clothes Trees; Lamps; Pictures; Horse & Clock; Kerosene Heaters.

## CHINA & GLASSWARE

Set of Willow China; Iris; Depression Glass; Pressed & Pattern Glass; Character Lunch Boxes, Tupperware; Beer Tap & Bar Items; Milk Bottle; Avon; Cookware; Agate; Advertising Items.

## LINENS.

TOYS: Tonka Trucks, Mini Trucks; Lincoln Logs, Doll; Books; Baskets.

TOOLS: Shop Smith (Complete w/All Accessories); Thickness Planer; Metal Cutting Band Saw; Drill Press; Shop Smith Bits; 10" Table Saw; Router, Elec. Welder; Chain Hoist; Metal Lathes; Drills; Saws; Sabre Saws; Sanders; Manley Press; Vises; 2 Upper Mechanic's Cabinets; Floor Edger, Power Grinder; Cement Mixer w/Motor; Folding Workbenches; Clamps; Motors; Compressor; Machinist Tools; Socket Sets; Adjustable Wrenches; Torque Wrench; Chisels; Planes; High Speed Bits; Acetylene Torch Gauges, Hoses, Tips; Pipe Cutters & Wrenches; Vises; HAND TOOLS; Body Tools; Jacks; Hand Saws; Metal Cutting Tools; Chain Saws, Ladders; Riding Mowers; Storage Lockers.

FISHING EQUIP.: Old Wooden Lures; Rods; Reels; Pocket & Hunting Knives.

GUNS: 20 Ga. Stevens; 30-30 Stevens Model 325C; 22 Semi Automatic; LUMBER; SENSENICH AIRPLANE PROPELLERS.

Terms By:  
**BONITA SNADER**  
738-1856

No out of state checks unless accompanied by a current bank letter or prior arrangement with auction service.

**HORST AUCTS.**  
T. Glenn (717) 859-1331 - (717) 738-3060  
Timothy G. AU438L  
Thomas A. (717) 738-2132  
-VOICES OF EXPERIENCE

## FARM MACHINERY SALE

**SATURDAY, MARCH 5, 1994**  
10:30 A.M.

(Snow Date Friday, March 11, 10:30 A.M.)

On the farm located in Montgomery County near Damascus, MD. From I-70 take Rt. 27 south to Damascus, at the third light turn right onto Bethesda Church Rd. Go two miles turn left onto Johnson Drive. Go 1 mile, farm on left.

### TRACTORS AND TRUCK

JD 4440, wide front - JD 4430, wide front  
JD 4040, wide front - JD 4030, wide front  
INT. Utility w/side mount mower  
CHEV. C-60 Truck w/Omaha Grain body and Cattle Racks (Low Mileage); Gooseneck Cattle Trailer 26'.

### FORAGE AND HAY EQUIPMENT

JD 3960 Chopper w/Corn and Grasshead, JD 4400 Self-Propelled Combine w/14' Grain Head and 4 Row Corn Head, JD 386 Baler w/Thrower, NH 848 Round Baler, NH 256 Rake, 4 Hay Wagons w/Metal Sides; 3 NH - 1 JD, 2 Little Giant Elevators (1 PTO Electric), 2- JD 716A self-unloading Wagons w/roof and Tandem Axles also 3 JD 714A S-U Wagons w/roof, NH #28 Blower, Hay Tedder, NH 489 Haybine.

### TILLING AND PLANTING EQUIPMENT

JD 8300 Grain Drill 18 disk, JD 7200 6 Row Air Corn Planter w/Liquid Tanks and Bean Boxes (like new), JD 310 Transport Disk Harrow, White Transport Disk Harrow w/cyl., Brillion 14' Transport Roller Harrow w/cyl., Chisel Plow, JD 2600 5 Gang Plow 16" w/ auto. trip.

### OTHER EQUIPMENT

Butler Mixer Wagon w/scales, NH 308 Manure Spreader w/Tandem Axle, JD Fertilizer Spreader, 3 P.H. Avco-NI Fertilizer Spinner, John Blue 32' Boom Sprayer w/Tandem Axle, Acetylene Welder w/Tanks, Winpower Portable Generator, Brock Feed Bin, Danuser Post Hole Digger, Large Cattle Sun Screen, (5) 24" Electric Fans, (12) Stainless Steel Feeders for parlor, (2) Electric Fly Lights, Fly Sprayer and Few misc. items.

TERMS: Cash or Good Check on Sale Day. Nothing removed until settled for. You will be asked to show receipt upon leaving the premises. Your cooperation will be appreciated. Lunch Rights Reserved. Not Responsible for Accidents.

OWNERS:  
**MR. & MRS. JOHN DOODY**  
11206 Mt. View Road  
Damascus, Maryland  
PH: 301-253-2866

SALE MANAGER  
**NH CATTLE CO.**  
Norman Hill  
15905 Union Chapel Road  
Woodbine, Maryland 21797  
Phone: 410-489-7121

Assisting  
Denny Remsburg 301-473-7959  
Ellen Hill Kilby 410-795-3206