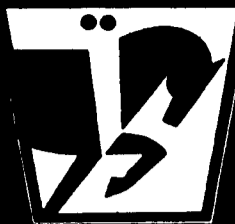


## KELLER'S FARM MACHINERY

116 Richlandtown Pike  
Quakertown, PA 18951  
215/536-4046

### USED TRACTORS

- JD 2040 w/model 145 loader
- MF 1040, 4x4 w/loader like new
- Ford 3910 w/Ford 776B loader
- Ford 1710 w/Ford 770B loader
- Ford 3000 G, PS, w/Snow Plow
- Ford 801, Gas, P.S. w/Loader
- Ford 535, Tractor Loader Backhoe
- Farmall C w/single front wheel
- MF 65, gas live PTO
- MF 40, P.S., LPTO
- Ford 335 w/loader, P.S., LPTO
- Ford 6610 Series 2, fully equipped
- Ford 4630 fully equipped, like new
- Ford 3930 w/300 Hrs.
- Ford 501 off set, w/1R cultivator
- Ford 4000D, S.U., 8 speed
- Ford 1720, 4x4 w/loader, 400 hrs.
- Ford 1220 4WD w/Loader
- Ford 2810 Series 2, 8 Spd.
- Farmall 300, NFE, Fast Hitch
- Farmall Cub w/Snow Plow
- Ford 9N w/Loader, New Tires & Paint
- NI 509 mower conditioner
- JD model 350 manure spreader



## WISCONSIN HEAVY DUTY ENGINES

Serving The Community Since 1971

Wis.-Robin, Kawasaki, Kohler, Briggs & Stratton, Tecumseh, Honda

### Rockford and Twin Disc Clutch Parts & Accessories

### WISCONSIN REPLACEMENT ENGINES

New & Rebuilt  
Short Blocks

Special Purchase V465D 65  
HP Wisconsin, Electric  
Start w/Alternator, Ideal for  
Grinders, Large Power Units,  
Reg. List \$4,836  
ONLY \$2,885 (While They Last)  
• W2-1250, 30HP,  
electric start.....\$1595  
• Special Buy-One Only  
VH4 D 30 HP Crank  
Start.....\$1,585  
W/4-1 Reduction.....\$2,095

### Authorized Service Center

- Complete Rebuilding
- Large Parts Inventory

## FISHER ENGINE SERVICE

3141 Old Philadelphia Pk. • Bird-In-Hand, PA 17505



1991 F350 7.3 Liter Diesel GVM  
Sprayer Truck 16,000 miles. Raven  
Flow Meter, 500 gal. Tank,  
30 gal. Rinse Tank  
**(610) 593-5026**

### Excellent Ford Tractors

- 8700, cab, air, DP, weights, 3,700 hrs.
- 7710, cab, air, DP, 18.4x34, 2,100 hrs.
- 7710, cab, DP, 18.4x34, 1,700 hrs.
- 7600, DP, dual remotes, 16.9x38,  
very low hrs., 1 owner
- 6610, DP, dual deluxe hyd., 18x34, 2,000 hrs.
- 6610, DP, dual remotes, roll bar, 18x34, 1,900 hrs.
- 5600, DP, dual remotes, 18.4x30, 3,200 hrs.
- 4630, 8x2 trans., 1 remote, 16.9x30, 300 hrs.
- 3930, 4WD, 8x2 trans., 14.9x28, 180 hrs.
- 3910, 4WD, syncro w/Ford loader, 250 hrs.
- 3910, dsl., rollbar w/Ford loader, 600 hrs.
- 3910, diesel, rollbar 16.9x28, 2,100 hrs.
- 3000, gas, 8 spd., PS, LPTO, only 1,000 hrs.
- 2600, diesel, 8 spd., LPTO, PS, 3,100 hrs.
- 1620, 4WD, hydro, remotes, 400 hrs.
- JD 2955, hi/low, 18.4x38, 1,900 hrs.
- JD 1070, 4WD, weights w/JD 80 loader, 185 hrs.
- JD 870, 4WD w/JD 80 loader, 110 hrs.

### Equipment

- FNH 144 windrow inverter, like new
- FNH 489 haybine, like new
- FNH 824 corn head, like new
- NH 28 forage blower, good condition
- NH 25 forage blower, good condition
- Roll bar fits 5000 thru 7610

### Ford Loaders

- 7210 QT fits 2WD, 5000 thru 7610
- 7410 QT fits 4WD, 5610 thru 7610
- Dunham loader w/valve, fits Ford 3000
- All Tractors Tested On Our Farms.
- Please Call For Appointment —

### Burkholder Bros.

Lebanon, PA  
717-272-2352 717-949-2123

### Best Buys in Used Equipment



'86 Case 455C Crawler Loader  
1300 Hours, 1 Yd. Bucket w/Teeth  
Rock Guards

Reduced To \$15,500  
5.5% Financing Available

### CONSTRUCTION EQUIPMENT

Case 586 Forklift, 21' Mast.....\$17,900  
MF 40 Tractor Loader, Cab

Tire Chains, 18.4x38 .....	\$ 285
14.9x24 .....	\$ 100
6x24 .....	\$ 50

### USED FARM TRACTORS

- Maxxum 5130, MFD, Cab, 200 Hrs
- Maxxum 5140, 2WD, ROPS, 100 Hrs.
- Ford 1510, 22 H P, 2WD, Low Hours
- Ford 1910, 28 H P., 2WD, w/Loader

### MANURE SPREADERS

- MF 110, Small PTO Spreader
- Pequea 2500 Gal Slurry
- Gehl 329 Scavenger, 2900 Gal.

### HAY & FORAGE

- Ford-NH 358 Grnder/Mixer, Very Good
- NH 311 Baler w/Engine, Very Good
- NH 315 baler w/thrower
- NH 273 Baler w/thrower
- New Holland 1495 self-propelled, gas
- IH 100 Sickle Bar Mower, 3 Pt
- NH 488 Haybine
- NH 489 Haybine
- JD 1327 Discbine
- Hesston 1014 Haybine
- Gehl HA900 Hay Head, 6 Ft
- Gehl TR680, 2RW row crop
- New Idea 456 round baler, 5x6
- Gehl 810 Forage Box

### MISCELLANEOUS

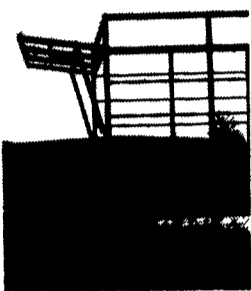
- Oliver 8' Disk, 3 Pt
- 5' Front Snow Plow, Hyd Lift
- Hydraulic Lift Gate For Truck
- MF 52, transport disk, 12'
- JD 8350 grain drill, 18x7 w/grass  
seed and fertilizer
- IH 800 corn planter, 4 RN
- GMC, V6, diesel engine, overhauled

## A.L. HERR & BRO.

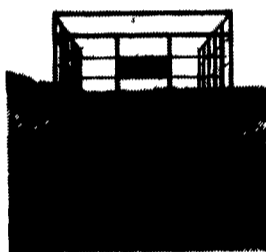
Park Ave., Quarryville, PA 17566  
(717) 786-3521  
We Ship Parts U.P.S.



## DUTCH BROTHERS



### Unique Rear Unloading



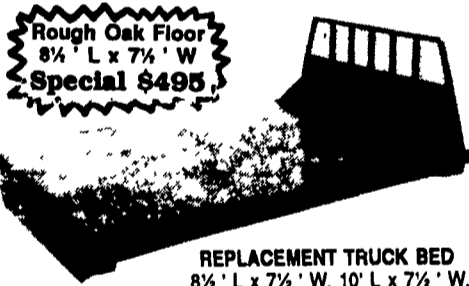
Options:  
Running Gears  
& Flat Beds

- 18' x 8' inside
- 14 ga. square tubing, for extra strength and long life
- Front and rear openings need only 38" clearance
- End gates made of extra heavy expanded metal, and spring loaded latches
- Beds built of all oak
- 3" x 8" main beams
- 2" x 5" cross member
- Nailed with galvanized nails
- Bolted with plated bolts
- Fabricated side rail for extra strength
- 8 ton gear
- 11L tires & tubes
- Extension tongue
- Built to last

New Chain  
Release  
Side  
Opening

SPECIAL  
PRICES  
THRU  
MARCH 15

**Dutch Brothers**  
(717) 776-7465 or  
(717) 776-3363



Rough Oak Floor  
8 1/2' L x 7 1/2' W  
Special \$495

REPLACEMENT TRUCK BED  
8 1/2' L x 7 1/2' W, 10' L x 7 1/2' W,  
12' L x 7 1/2' W  
Wood or Steel Floor

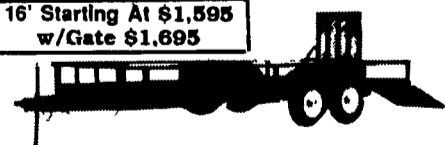
Also Available in 4'x8' and 5'x8'

4'x7' Tilt \$399  
w/Gate \$495



UTILITY (TILT OR GATE MODEL) Sizes: 5'x8',  
5'x10', 6'4"x10', 6'4"x12', 3000# GVW

16' Starting At \$1,595  
w/Gate \$1,695



UTILITY WITH GATE - SIZES: 12'x76", 14'x76",  
16'x76" 18'x76", 18'x81", 7,000# GVW, 20'x81"  
12,000# GVW

Also Available in Car Haulers 16', 18' 7,000# GVW



FLAT BED: Sizes: 16'x76", 18'x76", 18'x81",  
8,000# GVW, self storing 80" long ramps.

STARTING  
AT  
\$695.00

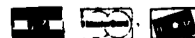


Car Dolly

### International Farm Equipment

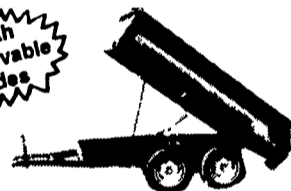
- 1 & 2 Bottom Plows
- Discs 4' - 8'
- Blades 5'-8'
- Box Blades 4'-8'
- Stone Rakes 5'-8'
- Post Hole Diggers
- 1 Row Cultivators
- Dirt Scoops
- Boom Poles
- Rear Carriers
- Chipper-Mulcher
- Fertilizer Spreaders
- Concrete Mixers
- Field Cultivators
- Potato Plows
- Hay Rakes & Tedders
- Rotary Mowers 3'-11'
- 4'-7 1/2' Finish Mowers
- Bale Carriers
- Sickle Mowers
- Rototillers
- Truck Beds - 7' to 12'

Over 300 Trailers  
In Stock  
Starting At \$495.00  
50 Different Models  
T-Plates  
DEALERS WANTED



### HIGHWAY HYDRAULIC DUMP

With  
Removable  
Sides



6'x10', 7,000#

6'x10', 10,000#

ALSO AVAILABLE IN DROP AXLE IN 12' TO 16'



CONSTRUCTION (LOW DECK) 16'x76",  
18'x81", 20'x81" 8,000# or 12,000# GVW

Starting At  
\$3695 w/4'  
Adj. Tall



GOOSENECK SIZES: 20'x8', 12,000# GVW,  
24'x8' 18,000# GVW.

Also: 18'x8' 6 Ton, 20'  
to 24'x8' 9 & 10 Ton



### DECK-OVER CONSTRUCTION

18'x8' w/Tail 10,000# GVW \$2,995  
24'x8' 10 Ton Dually w/Elec. Brakes \$5,995

## KUTZ FARM EQUIPMENT, INC.

Pine Grove, PA (717) 345-4882

8 AM-5 PM MONDAY TO FRIDAY  
8 AM-12 SATURDAY OR BY APPOINTMENT