



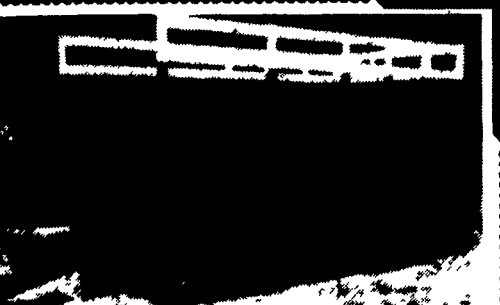
**Liquid Manure Pumps
Portable & Stationary**

CASE IH 485 TRACTOR
4 WD, With Loader
\$15,500

- IH 684 TRACTOR \$9,800**
- IH 1466 Tractor **\$8,900**
- IH 1256 Tractor **\$7,900**
- JD 20 Ft. Transport Rotary Hoe,
w/All New Wheels..... **\$1,850**
- NH 489 Haybine..... **\$3,900**
- NI 12A Manure Spreader **\$1,250**



**MILLER'S
REPAIR**
1 Mile North of Bird in Hand
8 Miles East of Lancaster
Ph. 717-656-6109



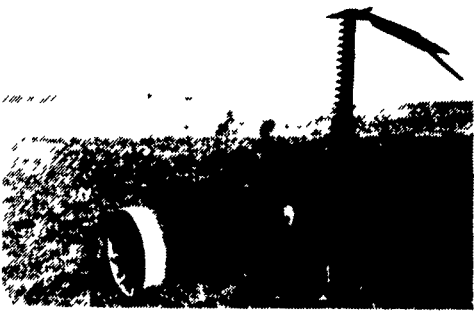
February Special

ALL OAK BALE THROWER BODIES

- 18' L - 9 1/2' W - 7 1/2' H Painted
- 8 Ton Extra Wide Gear Adj. Tong
- 11L Tires and Tubes Complete **\$1445**
- 18' L - 8' W - 7 1/2' H Painted **\$650**
- 16' L - 8' W - 7' H Painted **\$550**
- 8 Ton Gear, No Tires **\$470**
- Extension Tong Extra **\$25**
- Used Car Tires & Tubes Set of 4 **\$45**
- Used Truck Tires & Tubes Set of 4 **\$75**
- New 11L Tires & Tubes Set of 4 **\$175**
- 18' Oak Bed Painted Red **\$275**
- 16' Oak Bed Painted Red **\$215**
- 16' Popular Bed Painted Green **\$200**
- Set of 4 Used Tires **\$45**

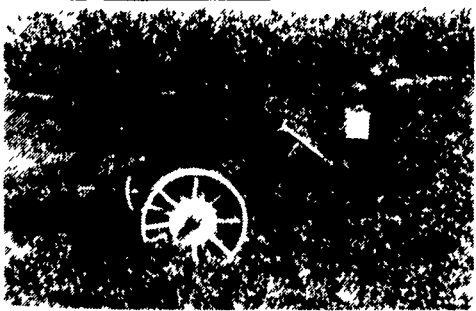
Ivan, Noah, Ammon Hoover
1571 Diamond St. Rd., Ephrata, PA 17522
7 AM to 7 PM 717-733-6825
For Gears Only Call 717-354-0595

The I & J Cultivator



MOWERS: 3 point or trailing features: guards & blade, move back and forth cuts like a scissors, virtually no plugging.

**5% OFF ALL CULTIVATORS
BOUGHT UP TO 2/28/94**



DEEP TILL SLITTER: Available in 1 or 2 shanks, optional hydraulics. On Sale Now

Corn binders: get your orders in by June 1, 1994

We Also Carry Flex Tine Harrow

I & J MANUFACTURING
Dept. LF, 5302 Amish Road • Gap, PA 17527
717-442-9451

(Call Between 8:45-9:00 A.M. Weekday Ask For Jake)

NH 273 baler \$2,200.
McCormick hay rake \$950.
Gehl 880 haybine \$1,500.
JD 12' transport disc, like new blades, \$1,200. Burlington County. (609)267-6071

RECONDITIONED MANURE SPREADERS NI 17, and 12A, good shape, \$1,100 Rewooded 17A and 10A \$2,200. Excellent shape Also have "as is" spreaders, \$250 and up. 9 1/2 ft. cultipackers (1)15" packer and (1)12" packer. Thom Wheary (717)687-0102.

Rissler 238 TMR feedcart \$4000, Rissler 14' dbl-chain conveyor w/40 degree incline \$500, Rissler 12' sng-chain conveyor \$200 814-267-3165.

OIL FIRED incinerator, approx 500 pound capacity, like new. (717)879-1637, (717)869-1647.

OLIVER 1800, gas w/cab & heat, WF, good rubber, twin outlets, clean older tractor, \$3,750. 410-833-9091

Oliver 1550 diesel, WF, parts tractor or fix up, \$1,500 (304)263-2976.

Oliver 1955, 4400 hours, excellent condition, \$6500 Taneytown Farm Equipment 410/751-1500.

Oliver 4X16 Cushion Trip Plow \$750; Oliver 12' Disc \$1000, MF 10' Disc, New Blades. \$850, Ford 4 Bottom Auto-Reset Plow \$950, Brady 12' Stalk Chopper \$900 (609)767-0444

Int 5088 w/cab, 3688 w/Cab, 3388 w/Cab, (2) 1486 w/Cab, 1466 w/Cab, (2) 1086 w/Cab, (2) 1066 w/Cab, 1066 Black Stripe, (2) 986 w/Cab, 966 w/cab, 966, 884, 806, 786, 784, 784 w/cab & loader, 766, 766 w/Cab, 706, (3) 656, 684, 560, 460 w/picker, 400, Cub w/mower, H

JD 4430 w/cab, 4320 w/cab, 4000, 4040, (3) 4020, 3020, 2940, 2840 w/cab, 2550 4wd w/loader, 2440, 430, Ferguson 35, Ford 861 w/loader, AC D19, AC XT 190 w/cab, 200, JD 410 Backhoe Loader, JD 550 dozer, JD 675 B skid steer

Combines JD 6600 Sidehill, JD 6600, (2) JD 3300, JD 40, MF 750, MF 550, 510

Balers: Round (2) NH 855, (2) NH 852, (3) NH 851, NH 849, NH 848, NH 847, JD 335, JD 330, (2) JD 510, NI 456, Hesston 5500

Balers: Square NH 278 w/thrower, NH 275 w/thrower, NH 273 w/thrower, NH 320 w/thrower

Planters Int 800 air 4R, (2) IH 800 4R, IH 900 4R air, IH 56, IH FH 2R, IH 3 pt 2R, JD 7000 4R, JD 1240 4R, JD 495 4R, MF 3 pt 2R

Drills Int 5300, (2) Int 510, (2) JD 8250

Plows (2) 5 bottom, discs, chisel plows, Farmco feeders, Hurst trailers, and all other types of farm equipment

Misc. (3) NH 489 haybines, Grimm hay tedder, Kuhn hay tedder.

From **Leader's Farm Equipment**
Everett, PA
814-652-2809

Lancaster Farming, Saturday, February 26, 1994-D5

NI 326 2RW pull-type corn picker, very good condition. \$1,650. (717)359-5069.

O-Frick sawmill complete w/471DD, 54" saw, 5hdbk steel carriage, sawdust drag, rollers, grinder, \$6,000. 175hp Cummins power unit \$3,200. 6 blades 1/54" band resaw, \$500 (215)431-2987

NH 30 forage blower, 1000 RPM, reconditioned Franklin County (717)328-2336

NH 352 grinder mixer, \$1900 Taneytown Farm Equipment 410/751-1500.

NH 411 discbine, 540 PTO, 3 years old, sharp, shed kept, \$7,500 (301)898-7426

**REPLACEMENT
TRACTOR
PARTS**

**FOR QUALITY,
SERVICE AND SELECTION**

from the #1 replacement tractor parts company, call toll-free

New: 1-800-247-0126
Rebuilt & Used: 1-800-247-0128

FREE CATALOG 1-800-247-7508

- FOR ADDITIONAL SERVICE VISIT A STORE NEAR YOU.
- BLOOMSBURG, PA
 - CHAMBERSBURG, PA
 - FREDERICK, MD
 - GLASSBORO, NJ
 - HAGERSTOWN, MD
 - HANOVER, PA
 - LANCASTER, PA
 - MILLVILLE, NJ
 - QUAKERTOWN, PA



Serving Rural America since 1935

SPECIAL OF THE WEEK

MF 3090
4x4 Cab/Air
2,284 Hrs.



\$23,000.00
With Loader
\$26,000.00

- IH 1586, cab, air, **SOLD** \$12,000
- IH 766, black stripe, cab..... Coming In
- IH 1486, cab, air..... \$12,000
- IH 1086, cab, air, duals..... \$11,900
- IH 706, diesel, 310 motor..... \$ 3,600
- IH 685 w/loader, shuttle shift..... \$14,250
- IH 574, diesel w/TA..... \$ 7,200
- IH 186 hydro, cab & air..... \$13,500
- Case IH 885, cab, air, 4x4, loader..... \$24,500
- Case IH 2096, fenders, power shift..... \$17,000
- MF 3680, 4x4, low hrs. \$38,000
- MF 3090, cab, air, 4x4..... \$23,000
- MF 2745, 24 spd., cab, air, duals..... \$12,000
- MF 2705, 24 spd., cab, air..... \$ 9,500
- MF 1155 w/cab & air..... \$ 7,500
- MF 390 w/236 loader, 700 hrs..... \$18,000
- MF 375 w/838 loader, 4x4..... \$21,000
- MF 360, 4x4 w/load **SOLD**..... \$14,000
- MF 275, diesel, late model..... Coming In
- MF 270, 1,100 hrs..... \$ 8,900
- MF 245 w/loader, shuttle shift..... \$ 8,900
- MF 165, diesel, square axle..... Coming In
- MF 165, 8 spd..... \$ 6,500
- MF 50C w/loader, shuttle shift..... \$ 8,000
- Ford 5610, 8 spd **SOLD**..... \$ 9,500
- AC 7010, power shift, cab..... \$ 8,500
- AC 200, new motor & tires..... \$ 6,500
- JD M..... \$ 1,200
- JD 4955, 4x4 w/duals, 1,040 hrs..... Coming In
- JD 3150, 4x4, hi-lo..... \$21,500
- JD 2955, 4x4, cab & air w/265 loader & bale grabber..... \$30,500
- JD 2640, tiger stripe, 8 spd. \$ 9,500
- JD 2520, diesel, WF, SR..... \$ 8,000
- JD 2510, gas, 2 remotes..... \$ 4,500
- JD 1250 w/loader, 4x4..... \$11,000
- JD 730, diesel, electric start, 3 pt. \$ 4,200
- JD 420 w/loader..... \$ 3,200
- Deutz Allis 6260 **SOLD**..... \$ 8,800
- Bobcat 731, Deutz diesel..... \$ 5,500
- Gehl 4610, diesel..... \$10,500
- JD AW 12' Disc..... \$ 650
- JD 111 10' disc..... **SOLD**..... \$ 1,500
- NH 411 discbine..... \$ 6,500
- Taylorway 7' Soil Saver..... \$ 3,900
- 21' White Field Cultivator, Hyd. Fold..... \$ 1,750
- AC 1300 25' Folding Field Cultivator..... \$ 2,500
- (3) 12' Cultipackers..... \$ 700 to \$ 1,000
- Woods 10' Offset Mower..... \$ 2,500
- MF 880 4 & 5 btm. reset plows..... \$ 1,000 & \$ 1,200
- IH 450 auto plow, 3X..... \$ 1,750
- Oliver 348 3x auto plow..... \$ 1,250
- JD 6 btm. rollover plow..... \$ 4,500
- MF 13' Flex Head UII..... \$ 2,800
- MF 15' Flex Head..... \$ 1,900
- MF 20' Flex Head..... \$ 1,900
- IH 7 Shank Auto Reset V Ripper..... \$ 4,900
- 18.4x38 & 20.8x38 duals..... \$ 1,000
- 14' Transport Packer..... \$ 1,800
- Better Bilt 1500 Gallon Top Fill Spreader..... \$ 2,200

Mechanics Special

- Ford 7600, 4x4, Fenders, DP..... \$ 6,000
- JD 2955, 4x4, Cab & Air..... \$12,000

Financing Available

L & M BURKHOLDER
Between Brownstown & Rothsville
Ephrata, PA
717-859-2960 717-859-2712
Shop 717-859-6616

OPEN HOUSE

WEDNESDAY, MARCH 2, 1994
8-5 PM

Free Pancake & Sausage 10 AM - 2 PM
10% OFF On All Parts

Door Prizes

Ag-Industrial Equip. Co.

DEUTZ-ALLIS

50 N. Greenmont Rd., on Rt. 1, Rising Sun, Md.
301-658-5568 301-398-6132 215-869-3542
Immediate Financing
Hours: Mon. thru Fri. 8 to 5:30; Sat. 7 to 2 CLOSED SUNDAY

Leaman Tractor Parts



329 Brenneman Rd.,
Willow Street, PA 17584
(Lancaster Co.)
717-464-2874



(Turn Left on Brenneman Rd. from 222 S at Refton)
Fax 717-464-4130
DEALER INQUIRIES WELCOMED

**TORQUE AMPLIFIERS
& CLUTCHES**

- ★ New Wider Heavy Duty Super Sprag 1-1/32" Wide
- ★ 5 Yr. Warranty Against Sprag Failure
- ★ Price \$695.00
- *5 yr. - 100% parts & labor against sprag
- *2 yr. - 100% parts & labor on remainder of unit
- Our standard heavy duty TA is still available at \$645.00 and carries a *2 yr. - 100% parts & labor warranty.
- * Certain restrictions apply and there will be a maximum labor pay-out of \$450.00
- We also have units & parts available to rebuild old style TA's, including ramp & carrier sets.
- NEW price on ramps & carriers - \$200.00

USED TRACTORS

- IH 1066 w/Hiniker cab w/air, sharp
- Coming In- IH 966 cab, air
- IH 1066 black stripe, cab, air new TA
- JD 720 diesel w/factory electric start, NF, 3 pth., good condition
- IH SMTA, gas, NF, very nice
- Ford 600 project tractor
- Several sets of 18.4x38 axle duals
- Several sets 13.6x38 tires 80%
- MF 510 diesel combine w/13' grain head
- 18x42 tires & inner rims w/duals & hubs for IH tractors. Complete set to convert from 38" to 42"
- Wellline powered Carco winch mod. U35B. 35 ton capacity w/2 spd. gear box (new coat approx. \$12,500)
- IH D282 Engine to fit 656, 706, etc.
- IH D310 German engine
- IHD 429 fits 4100 & 4156

COLLECTORS

Farmall H V (High Crop) Very Nice Original Condition
FACTORY STEEL TO FIT JD A
JD 8020 good mechanical cond., fresh paint, field ready
JD 420W, good condition

USED PARTS

We specialize in IH tractors but we also have Case, AC, JD, Oliver, Massey and White tractors in our inventory.