

Heinsey's Poultry

Roots, East Petersburg
 Tuesday, February 15, 1994
 PRICES PAID PER POUND, EXCEPT
 AS NOTED RANGE:

Muscovy Ducks - Drakes .90 - 1.10.
 Muscovy Ducks - Hens .80 - .96.
 Pekin Ducks .50 - .64.
 Red Fowl 4-4.5 .50 - .74, Red Fowl 5-6
 .70 - .94.
 Crossbred Fowl 5-9 .50 - .76.
 Crossbred Roosters 4-6 .40 - .84,
 Crossbred Roosters 7-11 .40 - .86.
 Guinea Fowl .70 - .90.
 Banty Roosters 3.00 - 5.50 ea.
 Banty Hens 1.00 - 2.75 ea.
 Leghorn Hens .14 - .20.
 Silkies 3.50 - 4.75 ea.
 Geese 9-16 .20 - .38.
 Pigeons 2.25 - 2.60 ea.
 White Pigeons 3.50 - 4.00 ea.
 Rabbits 4-6 1.00 - 1.34, Rabbits 7-11 .90
 - 1.20.
 Bunnies 1.00 - 3.50 ea.
 Guinea Pigs 2.00 - 4.00 ea.
 Doves 2.50 - 4.00 ea.
 Chukars 3.75 - 4.25 ea.
 Pullets 4-6 .40 - .54.
 Total Coops Sold 648.

**LANCASTER FARMING
 STAFF**

Everett R. Newswanger,
 Managing Editor
 Lou Ann Good, Staff
 Andy Andrews, Staff
 Vernon Achenbach, Jr., Staff
NEWS CORRESPONDENTS
 Joyce Bupp, York County
 Seven Valleys (717) 428-1865
 Connie Leinbach, Berks County
 Boyertown (215) 367-4376
 Randy Wells, Indiana
 Marlon Center (412) 397-2529
 Judith Patton, Union
 Millinburg (717) 966-4770
 Gail Strock, Millin
 Belleville (717) 935-5675
 Linda Williams, Bedford
 Bedford (614) 623-5745
 Gay Brownlee, Somerset
 Salisbury (814) 682-2127
 David Hiebert, Westmoreland
 Scottsdale (412) 887-5929
 Agnes Smith, Northampton
 Mt. Bethel (215) 588-8262
 Christine McCahren, Juniata
 Millintown (717) 436-2886
 Carol & Onales Smith, Mercer
 Greenville (412) 588-6203
 C.J. Houghtaling, Tioga
 Middlebury Center (717) 376-2821
 Beth Miller, Cumberland
 Newville (717) 776-6571
 Sharon Schuster, Maryland
 New Windsor (301) 635-2654
 Eva Martin, Maryland
 Smithsburg (301) 824-2106

N.E. Weekly Shell Egg Report

February 15
 Report Supplied by USDA
 PRICES PAID PER DOZEN GRADE "A" BROWN EGGS IN CARTONS
 DELIVERED TO RETAIL STORES:

	EX. LARGE	LARGE	MEDIUM	SMALL
MAINE	1.08	1.04	.85	.59
N. HAMP.	1.01-1.05	.97-1.01	.78-.82	.52-.56
MOSTLY	1.03-1.04	.99-1.00	.80-.81	.54-.55
RHODE ISLAND	1.04-1.08	1.00-1.04	.81-.85	.55-.59
MOSTLY	1.04	1.00	.81	.55
VERMONT	1.10-1.11	1.05-1.07	.88-.89	
MOSTLY	1.11	1.07	.88	

with light sizes often barely steady. Demand was fair to fairly good, best where featured. Supplies of the large sizes were adequate, and the light sizes were adequate to fully adequate. Breaking stock supplies were adequate for the fair demand, and the trade sentiment was steady. Live hen prices were unchanged to higher, and offerings were short to adequate for the moderate to good demand from both domestic and foreign buyers.

Philadelphia Eggs

Thursday, February 17, 1994
 Report Supplied by USDA

MARKET COMMENT: TRADE SENTIMENT WAS STEADY FOR LARGE AND BARELY STEADY TO WEAK FOR MEDIUMS. DEMAND WAS MIXED AND MOSTLY MODERATE. SUPPLIES WERE ADEQUATE OR AVAILABLE WITH MEDIUMS IN THE LONGEST POSITION. A EXTRA LARGE .72-.74, A LARGE .70-.72, A MEDIUM .63-.66.

New York & Philadelphia Frozen Egg Report

Tuesday, February 15, 1994

The market tone was mostly steady. Trading was irregular as weather disrupted normal operations. Raw materials although available were confidently held. Further processors operated desired schedules and usually had sufficient floor stocks to satisfy current dealer interest.

WHOLESALE SELLING PRICES (CENTS PER POUND IN 30 LB. CONTAINERS) TRUCKLOTS LTL (MIN. 25 CONT.) RANGE MOSTLY RANGE WHOLE 49-52 50-51 52-60 BLEND () - 61-71 WHITES 40-43 41-42 44-50 SUGARED YOLKS (MIN 43% SOLIDS) 58-60 59-60 61-66 SALTED YOLKS (MIN 43% SOLIDS) 56-58 56-57 58-63 () - WHOLE PLUS YOLK PLUS SWEETENER, GENERALLY 28-32% EGG SOLIDS.

New York Egg Market

Wednesday, February 16, 1994

Prices were unchanged. Trade sentiment was steady. Demand was fair, occasionally better where featured. Supplies were adequate or available.

PRICES TO RETAILERS, SALES TO VOLUME BUYERS, USDA GRADE A AND GRADE A, WHITE EGGS IN CARTONS, DELIVERED STORE DOOR, CENTS PER DOZEN RANGE EXTRA LARGE 74-76 LARGE 71-74 MEDIUM 65-68.

National Egg Market

Wednesday, February 16, 1994

NATIONAL EGG MARKET - AT A GLANCE: Prices were unchanged to lower on mediums in the Midwest, unchanged on the balance.

The market tone was generally steady

**Weekly New York Egg Market
 Northeast Quotes**

From Fri., February 11 to Thursday, February 17

	FRI.	MON.	TUES.	WED.	THURS.
WHITE					
JUMBO	.80	.80	.80	.80	.80
EX. LARGE	.78	.78	.78	.78	.78
LARGE	.76	.76	.76	.76	.76
MEDIUM	.71	.71	.70	.70	.69
PULLETS	.57	.57	.57	.57	.57
OFF GRADE	.64	.64	.64	.64	.64
BROWN					
EXTRA LARGE	.89	.89	.89	.89	.89
LARGE	.86	.86	.86	.86	.86
MEDIUM	.71	.71	.71	.71	.71
OFF GRADE					
UNDERGRADES AND CHECKS	.31	.31	.31	.31	.31

BREAKING STOCKS: FRI. 42-44 LBS. 38.00-40.00, 48-50 LBS. 44.00-46.00, 50 LBS. AND UP 46.00-48.00.

Hackettstown Poultry & Egg

Hackettstown, N.J.

Report Supplied by Auction

Tuesday, February 15, 1994

Report Supplied by Auction

HEAVY FOWL 35-80.
 LIGHT FOWL 25-65.
 BANTAMS EACH 2.50-3.00, BY THE
 B. 70-1 50.
 BROILERS 20-40.
 PULLETS, EACH 4.00
 ROOSTERS 70-1 50
 GEESE 25
 TURKEYS 20
 DUCKS 35-1 25.
 RABBITS 1.10-1.95.
 PIGEONS EACH 1.75-4.25.
 GUINEAS 1 30-1.40
 WHITE EGGS EXTRA LARGE &
 UMBO 50-76, LARGE .49-.73;
 MEDIUMS 47-48
 BROWN EGGS EXTRA LARGE &
 UMBO 54-81; LARGE .42-.70.

We Buy Poultry Weekly For Cash!

- Leghorn Fowl
- Spent Fowl
- White Pigeons
- Bantams
- Bantam Roosters
- Broilers
- Rabbits
- Guinea Hens
- Muscovy Ducks

**We Pick Up At The Farm
 Watkin's Live Poultry**

718-272-6712
 between 7 AM & 6 PM
 718-843-9302
 after 7 PM

**JACKSON AVE.
 LIVE POULTRY**



WE BUY POULTRY FOR TOP CASH WEEKLY

- Muscovy Ducks
 - Rabbits
 - Broilers
 - Bantam Roosters
 - White Pigeons
 - Guinea Hens
- We Buy 1000-1500 Red Spent Fowl and Leghorn Fowl Weekly

We pick up at the farm (718) 665-1441 between 7 am - 5 pm OVER 35 years in the area

POULTRY SOFTWARE...

Layer Performance
 layer management

Pullet Performance
 pullet management

ESP
 Egg Supply Projection

EMAS
 Egg Marketing Accounting Software

Heritage Computer Solutions

(a division of Heritage PMS, Inc.)

Annville, PA

1-800-388-EGGS

SUBSCRIPTION INFORMATION

Subscription Price:
 \$19.75 per year; \$37.50 - 2 years
 \$30.00 per year outside of:
 PA, NJ, MD, DE, NY, OH, VA & WV
 \$58.00 - 2 Years
 Non-Refundable

Lancaster Farming (ISSN 0023-7485) is published weekly for \$19.75 per year; \$37.50 - 2 years by Lancaster Farming, P.O. Box 609 1 E. Main Street, Ephrata, PA 17522. Second Class postage paid at Ephrata, PA 17522. POSTMASTER: Send address changes to LANCASTER FARMING, 1 East Main Street, P.O. Box 609, Ephrata, PA 17522.

Phone Lititz (717)626-1164 or Ephrata (717)733-6397, Lancaster (717)394-3047. FAX 717-733-6058

For address change form or new subscription see near Mailbox Markets.

Members of National Association of Agricultural Journalists
 Pa. Newspaper Publishers Association, and National Newspaper Association.
 National Advertising Representative
 J.L. Farmakis, Inc.
 Phone (203)968-1746

Available On Microfilm

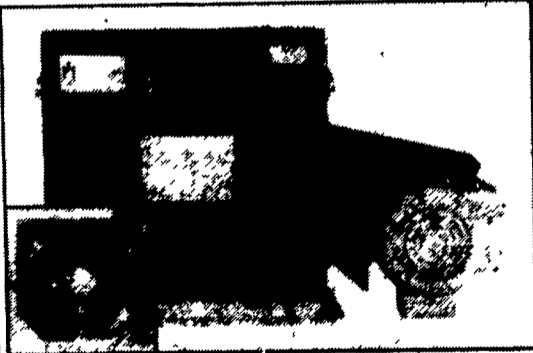
Copies of *Lancaster Farming* are available on microfilm from University Microfilms International, 300 North Zeeb Road, Ann Arbor, Michigan. Any questions about their service should be directed to the publishing manager.

PUBLISHER'S LIABILITY FOR ERROR

The publisher shall not be liable for slight changes or typographical errors that do not lessen the value of an advertisement. The publisher's liability for other errors or omissions in connection with an advertisement is strictly limited to publication of the advertisement in any subsequent issue or the refund of any monies paid for the advertisement.

Hammer Mills

The practical approach to grinding and mixing high moisture and dry grains



FEATURES

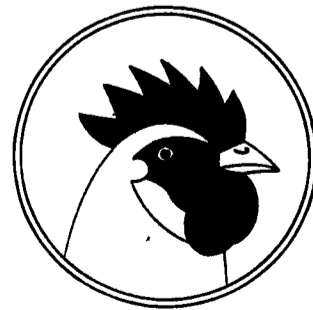
- ★ Low Initial Cost
- ★ Low Maintenance
- ★ Easy Serviceability
- ★ Heavy Duty Plate Magnet
- ★ Dust Tight Enclosure
- ★ 360° Screen
- ★ Low Operating Cost
- ★ Compact Design
- ★ Reversible Hammers & Screens
- ★ Removable Wear Plate
- ★ Self Locking Door Latches



automatic farm systems

608 Evergreen Rd.
 Lebanon, PA 17042
 (717) 274-5333

RISSER'S POULTRY INC.
 P.O. BOX 52 • LITITZ, PA



Buyers and Haulers of Leghorn, Medium, and Heavy Fowl.

Over 60 years of prompt payment and dependable service.

Now using carts for the most efficient means of moving spent fowl.

Tel. 717-626-5466
 FAX 717-627-3599