



Hog Markets

New Holland Feeder Pigs

New Holland, PA
Wed., February 17, 1994
Report Supplied by Auction
TODAY: 623 HEAD
LAST WEDNESDAY: 282 HEAD
LAST YEAR: 610 HEAD
TREND: COMPARED TO LAST WEDNESDAY, FEEDER PIGS 5.00-10.00 HIGHER. ALL PIGS WEIGHED ON ARRIVAL AND SOLD BY THE HUNDRED WEIGHT.
US#1-2: 24 HEAD 32-37 LBS. 102.00-107.00, WGHTD AVERAGE 36.33, WGHTD PRICE 105.19; 132 HEAD 40-49 LBS. 86.00-98.00, WGHTD AVERAGE 45.17, WGHTD PRICE 89.62; 154 HEAD 50-58 LBS. 74.00-94.00, WGHTD AVERAGE 53.53, WGHTD PRICE 84.79; 80 HEAD 60-69 LBS. 68.00-82.00, WGHTD AVERAGE 65.60, WGHTD PRICE 72.12; 88 HEAD 70-79 LBS. 60.00-70.00, WGHTD AVERAGE 72.26, WGHTD PRICE 63.98; 30 HEAD 82-96 LBS. 61.00-66.00, WGHTD AVERAGE 88.07, WGHTD PRICE 62.71.
US#2: 27 HEAD 20-27 LBS. 90.00-105.00, WGHTD AVERAGE 25.70, WGHTD PRICE 93.91.
US#2-3: 23 HEAD 62-65 LBS. 58.00-67.00, WGHTD AVERAGE 63.43, WGHTD PRICE 62.59.

New Holland Hog Auction

Lancaster, Pa.
Monday, February 14, 1994
Hog Receipts:
Today 687
Last Monday 1036
Last Year 863
TREND: Compared to last Monday bulk 210-260 lb barrows and gilts 50-1.00 lower, few 190-210 lb and 270-300 lb firm to 1.00 higher.
BARROWS AND GILTS: US 1-2 215-255 lb 47.50-48.00.
US 1 215-250 lb 48.50-49.25.
US 1-3 210-260 lb 46.75-47.50, 190-210 lb 45.00-46.00.
US 2-3 270-300 lb 46.00-47.00.

Indiana Hogs

Louisville, Ky.
Thursday, February 17, 1994
BARROWS AND GILTS: MOSTLY STEADY. DEMAND MODERATE.
COUNTRY: PLANTS: US 1-2 230-260 LBS. 46.50-48.00, 46.25-48.25 FEW 46.25. US 1-3 230-260 LBS. 44.50-47.00, 210-230 LBS. 42.50-45.00.
SOWS: NEAR STEADY.
US 1-3 300-500 LBS. 32.00-36.00, 500-650 LBS. 35.00-38.00, FEW OVER 650 LBS. 39.00.
PRELIMINARY ESTIMATE: 24,000.
***RECEIPTS HAVE CHANGED DUE TO CHANGE IN REPORTING BASE.

State Graded Feeder Pig Sale

Carlisle Livestock Market, Inc.
Friday, February 14, 1994
RESULTS ON 788 PIGS.
TREND: COMPARED TO FRIDAY, JANUARY 28 STATE GRADED SALE, PIGS WERE ACTIVE; FIRM 12.00-15.00 HIGHER. ALL PIGS WERE WEIGHED ON ARRIVAL AND SOLD BY THE HUNDRED WEIGHT.
US#1&2: 566 HEAD. 105 HEAD 42-49 LBS. 80.00-90.00; 175 HEAD 52-59 LBS. 79.50-87.00; 189 HEAD 61-73 LBS. 70.00-81.50; 97 HEAD 75-80 LBS. 70.00-73.00.
US#2: 139 HEAD. 19 HEAD 44 LBS. 73.00; 55 HEAD 50-59 LBS. 70.00-72.50; 6 HEAD 48-59 LBS. 60.00-61.00; 59 HEAD 69-90 LBS. 61.50-63.00.
US#2&3: 34 HEAD. 32 HEAD 49-59 LBS. 55.00-58.00; 37 HEAD 69-90 LBS. 44.00-53.00.
UTILITY 5 HEAD 58-60 LBS. 16.00. AS IS: 9 HEAD 67-90 LBS. 17.00-35.00.
NEXT STATE GRADED FEEDER PIGS SALE FRIDAY, FEBRUARY 25, 1994. SALE TIME 1:30 P.M. GRADING 7:30-11 A.M.

St. Louis Cattle, Hogs

Thursday, February 17, 1994
OPENING MID-SESSION WEEKLY CLOSE
CATTLE & CALVES: 500 (0 SLTR, 500 FDRS) RECEIPTS CONSISTS OF FEEDER CATTLE AND SLAUGHTER COWS AND BULLS FOR THE REGULAR THURSDAY AUCTION. NO SLAUGHTER CATTLE MARKET.
SLAUGHTER CLASSES: COWS: CUTT, UTIL, COMM BULK SALES HI-DRESS % LO-DRESS % BREAKING 2-4 BONDING 1-2 LOW TO AVG. CUTTER.
RECEIPTS THIS WEEK 1,200: WEEK AGO 1,000; YEAR AGO 700: COMPARED WITH LAST WEEK'S TERMINAL MARKET CLOSE, SLAUGHTER STEERS MOSTLY 1.00 HIGHER, EXCEPT HOLSTEIN STEERS STEADY. SLAUGHTER HEIFERS MOSTLY .50, INSTANCES 1.00 HIGHER. COWS AND BULLS STEADY. SUPPLY MAINLY CHOICE AND MIXED SELECT AND CHOICE STEERS AND HEIFERS, MODERATE SUPPLY HOLSTEIN STEERS, AND AROUND 10% COWS.

Lancaster Hogs

Lancaster Stockyards
Saturday, February 12, 1994
Report supplied by auction
There will no longer be a sale auction on Saturday. Sales will be held Monday and Wednesday.

Frederick Co. Hay

Buckeystown, Md.
Thursday, February 17, 1994
Report Supplied by Auction
32 LOADS. MARKET STEADY TO STRONG.
ALFALFA: FAIR TO GOOD 100.00-128.00, FAIR 82.00-86.00, DARK 65.00.
TIMOTHY: FAIR TO GOOD 112.00-122.00, FAIR 100.00-102.00.
MIXED HAY: FAIR TO GOOD 90.00-100.00, SQUARE BALES 2.50 EACH, BIG ROUND BALES 20.00-24.00 EACH.
CLOVER HAY: 92.00.
BROME GRASS: 97.00.
STRAW: DARK 72.00.
FIREWOOD: GOOD OAK 145.00 CORD.

Greencastle Livestock Market

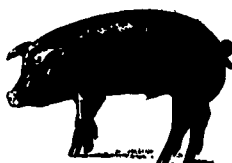
February 10 and 14, 1994
Hay & Straw
Report Supplied by Auction
27 LOADS
ALFALFA: GOOD 91.00-153.00.
ALFALFA: FAIR 75.00.
ALFALFA MIXED 127.50.
TIMOTHY HAY: 90.00-126.00.
ORCHARD GRASS: 82.50-121.00.
BROME GRASS: 105.00-108.00.
CLOVER: 82.50.
WHEAT STRAW: 112.00-152.00.

Diffenbach Auction Center

New Holland, Pa.
Monday, February 14, 1994
Report Supplied by Auction
TOTAL LOADS: 149.
ALFALFA: 105.00-155.00.
MIXED HAY: 85.00-150.00.
TIMOTHY: 107.00-172.00.
ORCHARD GRASS: 105.00-130.00.
STRAW: 135.00-187.00.
EAR CORN: 110.00-122.00.
FIREWOOD: 2 LOADS 82.00-87.00 LOAD.

Belleville Hay

Wednesday, February 16
Belleville, PA
Report Supplied by Auction
ALFALFA HAY: 65.00-140.00.
EAR CORN: 90.00-107.50.
MIXED HAY: 65.00-115.00.
OATS: 2.10-2.50 BU.
STRAW: 117.50-150.00.



PENNFIELD GRAIN BANK

Pennfield Offers A Sound Program For The Dairy Farmer To Use His Grain "Same As Cash" To Reduce His Monthly Feed Bill, And To Avoid Having To Take "Harvest Price" For His Grain

Prices Week Of 2/21/94
Corn \$3.37 Bu.
Soybeans \$6.80 Bu.
Barley \$2.83 Bu.

- No Storage Charges
- Prices Updated Weekly
- Grain Bank Balance Shown On Each Invoice
- No Hidden Charges
- "Ton-For-Ton" Free Hauling

For every ton of dairy feed purchased you will receive one ton of grain back hauled at no charge.



Hay & Grain Markets

Regional Hay

February 14, 1994
Eastern, Pa.
HAY & STRAW MARKET FOR EASTERN PA. - (ALL HAY NO. 2 AND BETTER. PRICES PAID BY DEALERS AT THE FARM & PER TON).
ALFALFA 90.00-120.00; MIXED HAY 80.00-120.00; TIMOTHY HAY 80.00-120.00; STRAW 75.00-110.00; MULCH 30.00-55.00.
SUMMARY OF LANCASTER CO. HAY AUCTIONS FOR WEEK ENDING 2/11/94. PRICES PER TON: LOADS: 250 HAY, 61 STRAW & 15 EAR CORN.
ALFALFA 87.00-145.00; MIXED HAY 90.00-160.00; TIMOTHY HAY 90.00-150.00; STRAW 107.00-145.00; EAR CORN 97.00-122.00.

SUMMARY OF CENTRAL PA. HAY AUCTIONS FOR WEEK ENDING 2/11/94. PRICES PER TON: LOADS: 154 HAY, 53 STRAW & 15 EAR CORN.
ALFALFA 83.00-135.00; MIXED HAY 75.00-125.00; TIMOTHY 67.00-102.50; STRAW 81.00-125.00, FEW REPORTED 152.50; EAR CORN 80.00-122.50.

North Jersey Market

Hackettstown, N.J.
Report Supplied by Auction
Tuesday, February 15, 1994
Hay-Straw & Grain Report
ALFALFA: 5 LOTS, 1.90-4.00 BALE. MIXED HAY: 14 LOTS, 2.10-3.10 BALE.
TIMOTHY HAY: 8 LOTS, 2.60-2.80 BALE.
GRASS HAY: 4 LOTS, 3.00-3.30 BALE.
GROUND SHELLED CORN: 1 LOT AT 6.50 BAG.
SHELLED CORN: 2 LOTS, 6.75 AND 8.25 BAG.
OATS: 5.00 BAG
TOTAL 35 LOTS

Vintage Hay

Paradise, PA
Thurs., February 17, 1994
Report Supplied by Auction
27 LOADS.
ALFALFA: 82.50-166.00.
MIXED HAY: 91.00-145.00.
TIMOTHY: 112.50.
GRASS: 97.50-99.00.
STRAW: 132.50-152.00.
CORN: 90.00.
SALE TIME 1 P.M.

Leinbach's Hay

Shippensburg, PA
February 12 and 15
Report Supplied by Auction
76 LOADS.
ALFALFA: GOOD 92.00-130.00, FAIR 70.00-89.00.
MIXED HAY: 70.00-130.00.
TIMOTHY: 87.00-107.00.
CLOVER: 73.00-105.00.
BROME GRASS: 115.00.
ORCHARD GRASS: 74.00-90.00.
STRAW: 110.00-130.00.
EAR CORN: 92.00-111.00.
CORN FODDER: 60.00.
FIREWOOD: 55.00-102.00 PICK-UP LOAD.

Keister's Hay

Middleburg, PA
February 15, 1994
Report supplied by auction
130 LOADS, 70 LOADS OF HAY.
ALFALFA: 85.00-150.00.
MIXED HAY: 75.00-140.00.
TIMOTHY: 90.00-120.00.
STRAW: 30 LOADS, 85.00-120.00.
EAR CORN: 14 LOADS, 85.00-120.00.
OATS: 8 LOADS, 1.90-2.40 BU.
FIREPLACE WOOD: 40.00-75.00 LOAD.

Good's Hay

Leola, Pa.
Wed., February 16, 1994
Report Supplied by Auction
TOTAL LOADS: 144.
ALFALFA: 52.00-140.00.
MIXED HAY: 90.00-170.00.
STRAW: 135.00-180.00.
TIMOTHY: 85.00-155.00.
CORN: 100.00-118.00.
GRASS: 102.00-145.00.
OATS: 2.50 BU.
SOYBEAN STUBBLE: 70.00.
CLOVER: 95.00.

Green Dragon Hay

Ephrata, Pa.
Friday, February 11, 1994
Report Supplied by Auction
10 TOTAL LOADS.
MIXED HAY: 94.00-100.00.
ALFALFA: 80.00-140.00.
TIMOTHY: 120.00.
ORCHARD GRASS: 85.00.
STRAW: 125.00-135.00.



KIRKWOOD HAY AUCTION
Hay, Straw and Grain Auction
EVERY TUESDAY
11:00
Located Rt. 472 8 miles south of Quarryville or 6 miles north of Oxford corner of Rt. 472 and Noble Road.
Lloyd H. Kreider, Auctioneer
AU-000513L
No out of state checks

PIGS
STATE GRADED SALE
FRI., FEB. 25
1:30 P.M.
AT
Carlisle
LIVESTOCK MARKET, INC.
Exit 12 Off I-81
(717) 249-4511 or
Evenings Jim, 249-2359

Walter M. Dunlap and Sons offers all cattle feeders two marketing days
Give us a call for advice and marketing conditions.
MONDAYS OR WEDNESDAYS
Consign With Us - For The Marketing Edge
Next Feeder Cattle Sale
Wednesday, February 23 - 11:00 A.M.
Walter M. Dunlap and Sons
Lancaster Stockyards
Tel. (717) 397-5136
An Old Line Commission Firm Keeping Ahead With The Times

Lancaster Farming
In This Issue
Five Sections

HOME AND YOUTH	COLUMNS
Homestead Notes.....B 2	Now is the Time.....A10
Home On The Range.....B 6	Livestock Ledger.....A36
Cook's Question Corner.....B 8	Consuming Thoughts.....B 3
Kid's Korner.....B10	On Being A Farm Wife.....B 4
4-H Happenings.....B16	Ida's Notebook.....B 9
Farm Women Societies.....B18	Poultry Pointers.....C 8
	Livestock Notes.....C10
	E-I-E-I-O.....D 2
DEPARTMENTS	FEATURES -
Editorial.....A10	Atlantic Breeders Meet.....A22
Farm Calendar.....A10	Nat. FFA Exchange.....A26
Farm Forum.....A10	Crops & Soils.....A28
Futures.....A16	Jr. Holstein.....A30
Mailbox Markets.....E 7	Mifflin Holstein.....A38
Sale Reports.....E11	Livestock Exhibitors.....B 2
Public Auction Register.....E12	Cancer Prevention.....B12
Business News.....C 4	Cumberland Farms.....B14
Woodlands News.....C 6	Adams 4-H'ers.....B16
Classified Ads.....C14, D 7	York 4-H.....B25
	Limousin Show.....B26
DAIRY	Performance Records.....C 2
Crawford DHIA.....A24	Southwestern Expo.....C 7
Lancaster Dairy Days.....A26	Lan-Chester Swine.....D 6
DHIA Focus.....A32	Cattlemen's Association.....E 5
Lancaster DHIA.....B19	
Md. DHIA.....D 4	
Top DHIA Herds.....E 2	