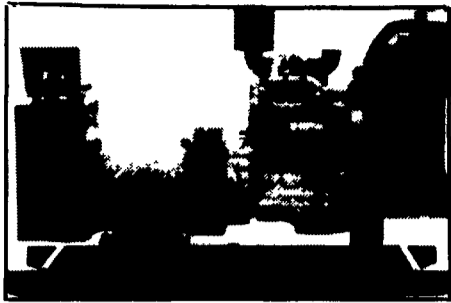


# GENERATORS



**AUTOMATIC and  
MANUAL SYSTEMS**

**DIESEL  
L.P. GAS  
NAT. GAS  
NEW & USED**



**LEROY SOMER  
PTO ALTERNATORS**

**BRUSHLESS  
INDUSTRIAL GRADE  
11 to 60 KW**

**READY FOR THE NEXT STORM?**

For Sales and Service Call The People Who Know Generators

**MARTIN ELECTRIC PLANTS**

280 Pleasant Valley Rd., Ephrata, PA 17522-8620

Tel: 717-733-7968 Fax: 717-733-1981

## USED EQUIPMENT

- NI 708, 2WD, w/737 picker & 2 heads, 30" or 38"
- DA DX 4.70 2WD, Cab
- DA DX 120, cab, 2WD
- White 5100 w/Splitter Planter, Late Model
- White 6100-12 Row Planter, front fold, 1 year old
- 6100 6 Row Planter, 1 year old
- JD 6R Cultivators
- JB 500 gal. S/S tank sprayer
- JD 1000 gal. Sprayer
- 24' AC disc, ex. cond.
- NH L35 Skid Loader
- JD 3 point rake
- Kuhn Double Rotary Rake
- Gehl round baler
- NH 575 baler w/hydro
- NH 320 Baler
- NH 326 baler
- NH 570 baler hydro.
- JD 4400 Combine w/grain heads
- Tyc 10' no-till drill
- NH TR96 w/heads 580 hrs.
- NH 791 spreader, new condition
- NH 795 spreader

**"Give Us A Try Before You Buy"**

We Also Have A Full Line  
Of New NH, Agco & White-NI  
**J. DAVID MULLINIX  
& SONS, INC.**

14420 Howard Rd., Dayton, MD 21036  
(410) 442-2688 (410) 489-4363  
FAX (410) 489-7634

## 1 FARM EQUIPMENT

**AG-AIR  
Mist Sprayer**



**AG-AIR 150 Gal. CANNON  
MISTBLOWER SPRAYER**

**\$3,900<sup>00</sup>**

**GREAT FOR: Sweet Corn, Vegetables,  
Trees, Nurseries, Follar Fertilizer**



110 South Railroad Ave.  
New Holland, PA 17357  
**(717) 354-4191**  
Monday Thru Friday 7:30-5:00  
Saturday 7-Noon

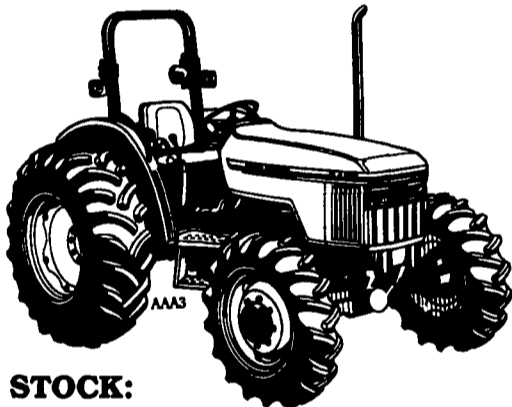


# GOOD DEALS FROM ABC GROFF...AND A GOOD DEAL MORE



## 5000 SERIES TRACTORS

Tough Inside And Out  
40, 50 and 60 HP



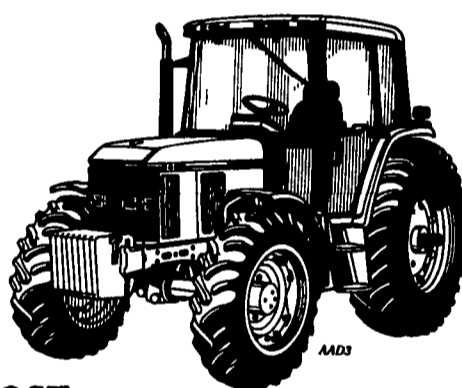
**IN STOCK:**

- 5400 MFWD 60 HP
- 5200 2WD 40 HP
- (1 Only, 400 Hrs.)

**\$13,500<sup>00</sup>**

## 6000 SERIES TRACTORS

Performance In A Comfortable  
Economical Package



**IN STOCK:**

- 6400 MFWD, 85 HP w/Comfort Gard Cab
- 6200 2WD, 66 HP w/Comfort Gard Cab
- (1 Only Demo)

**\$29,900<sup>00</sup>**

## ALL NEW 7200 AND 7400 SERIES TRACTORS

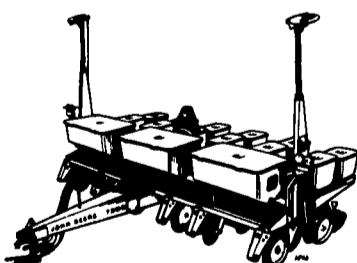
Two New Workhorses Built  
In Waterloo, Iowa



**IN STOCK:**

- 7400 MFWD, 100 HP
- With Comfort Gard Cab

## SPACE-AGE TECHNOLOGY GETS DOWN TO EARTH WITH THE NEW ROW CLEANER/COULTER COMBINATION ATTACHMENT



**IN STOCK:  
7200 6 Row  
With New  
Row Cleaner/  
Coulter  
Attachments**

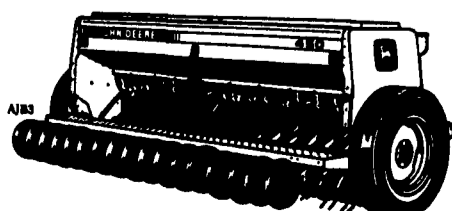
- Residue Cutting and Soil Sliding
- Less Hairpinning of Residue
- Faster Soil Warm Up And Smooth Ride For Openers
- Easier Opener Penetration
- Provides Zone Tillage That Helps The Closing Wheels Provide Optimum Soil To Seed Contact

## 450 END-WHEEL DRILLS: GOOD MADE BETTER

- 35 Percent greater penetrating Force than John Deere 8000 Series Drills
- Depth gauging Press Wheels accurately gauge furrow depth while providing good seed to soil contact

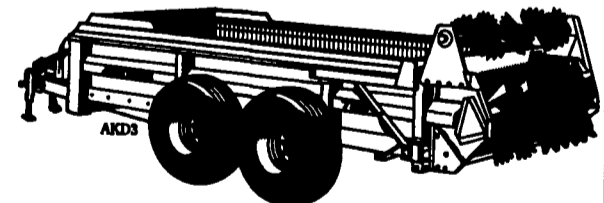
**IN STOCK:**

- 450 8 ft. with Grass Seed Att.
- 450 12 ft. With Depth Gauging Pressure Wheels
- (1 Only) **\$7,490<sup>00</sup>**



## HYDRA-PUSH™ SPREADER: 2 SIZES, MANY ADVANTAGES

- Two sizes of Hydra-Push spreaders. No chains.
- Fast unloading, no conveyor fall-back, self-cleaning.
- Resists corrosion and freeze-up.



**IN STOCK: 455, 150 Bushel with Endgate**

## SAVE HORSEPOWER, TIME, AND MONEY

- Only John Deere forage harvesters feature the Dura-Drum™ cutterhead, with economical segmented knives. Less plugging.
- Knife sharpening is a breeze. Adjustments, a cinch.

- When damaged, replace only a short knife for a fraction of the cost of one full-width knife.



**IN STOCK:  
3950  
HARVESTER  
BASE UNIT  
1 ONLY DEMO  
\$13,900<sup>00</sup>**



110 South Railroad Ave.  
New Holland, PA 17357  
**(717) 354-4191**

Monday Thru  
Friday  
7:30-5:00  
Saturday  
7-Noon

