

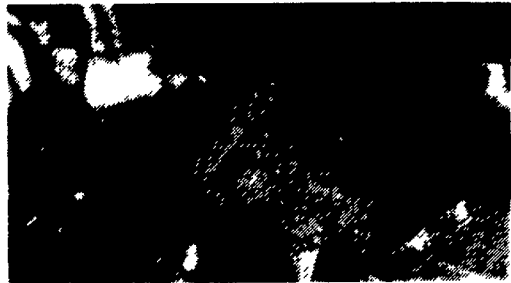
THE NO-TILL

GRAIN DRILL LEADER....

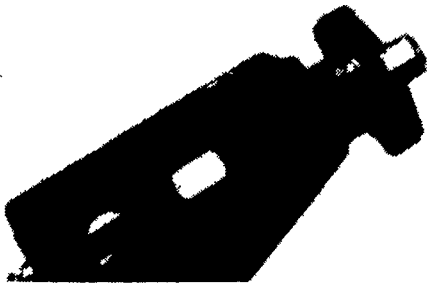
THE LITTLE THINGS MAKE THE DIFFERENCE



FLUTED SEED CUPS
a Great Plains exclusive - deliver outstanding accuracy. Whether the seed you're drilling is small, large or fragile, the Great Plains time-proven metering system will deliver the rate you choose evenly and gently — without scuffing.

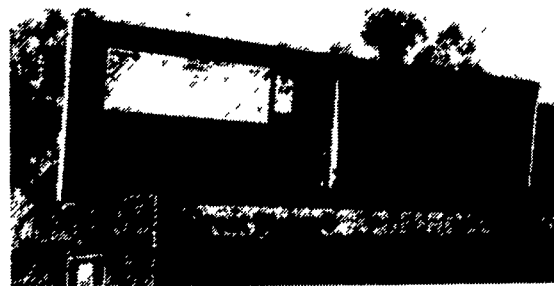


SPEED-CHANGE GEAR BOX
Makes speed rate changes easier



DIAL-A-DEPTH System
Makes changing planting depth quick & easy

LARGE ALL-WELDED SEEDBOX



holds up to 3 bushels of seed per foot. The lid is rain tight to protect your seed.

THERE IS A GREAT PLAINS NO-TIL DRILL FOR YOU - from 7' to 30'...

C.B. HOOBER & SON, INC.
Intercourse, PA
(717) 768-8231

All New & Used
Products Backed
By Hooper
Parts & Service
People Who Care



HOOBER EQUIPMENT, INC.
Middletown, ID
(302) 378-9555

Best Buys in Used Equipment

USED COMBINES

- CIH 1660, 1987, 2180 Hrs., 2 WD, Hydro w/AHC, Cab w/AC, Heat, Radio, 30.5x32 (U7501)
- CIH 1660, 2 WD, Hydro, 1390 Hrs., AHHC, Rocktrap, GL Monitor, Cab w/AC, Heat, Radio (U7945)
- CIH 1660, 1987, 1510 Hrs., 2 WD, AHHC, Feeder-Reverser, Standard Rotor, Cab w/AC, Heat, Radio, Standard Rotor (U8153)
- CIH 1660, 1987, 1800 Hrs., Chopper Feeder-Reverser, Standard Rotor, Cab w/AC, Heat, Radio (U8102)
- CIH 1640, 1988, 1079 Hrs., 28Lx26 and 12.4x16 Tires, Rocktrap, Auto Control Monitor (U7680)
- CIH 1680, 1989, 1100 Hrs., 30.5x32 & 18.4x16.1 w/AHC, Feeder-Reverser, GL Monitor, Specialty Rotor, 2 WD (U7550)
- CIH 1660, 1991, 1300 Hrs., 2WD, AHHC, G.L. Monitor, Straw Chopper, Specialty Rotor, 30.5x32 and 14.9x24 Tires (U8331)
- CIH 1680, 1987, 2357 Hrs., Hydro, AHHC, GL Monitor, 2WD, Cab, AC, Heat, Radio (U8533)
- IH 1460, 1978, 4802 Hrs., 24.5x42 and 11 00x16 Tires, AHHC (U7210)
- IH 1460, 1980, 3563 Hrs., 28Lx26 and 18 4x16.1 Tires, AHHC (U8232)
- JD 6620, 1981 3180 Hrs., Hydro, 28Lx26 w/215 Platform (U7343)
- IH 1480, 1980, 4350 Hrs., 30.5x32 and 18.4x16.1 Tires, Feeder-Reverser, GL Monitor, AHHC, 3rd Cylinder, (U8151)
- IH 915 Diesel, Hydro, Cab w/Air (U7477)
- IH 1460, 1982, 2850 Hrs., 4WD, Hydro Cab w/AC, Heat, Radio, AHHC, 30 5x32 & 14.9x24 (U7598)
- IH 1460, 1983, 2900 Hrs., Hydro, AHHC, GL Monitor, Cab w/Air, Heat & Radio (U8159)

- IH 1440 1978, 2WD, Hydro, 23.1x26 & 18.4x16.1 Cab w/AC, Heat & Radio w/AHHC (U7068)
- JD 6620 Sidehill, 1981, AHHC Chopper, HD Axle, Cab w/AC, Heat w/643 & 915 Heads (U8399)
- JD 6600 Sidehill, 2135 Hrs., AHHC Cab w/AC, Heat, 4 Row Wide Cornhead, 213 Platform (U8347)
- JD 6600 Sidehill, Hydro, 28Lx26 w/215 Flex Platform & 643 Cornhead (U7474)
- CIH 1660, 1989, w/Strawchopper, Stone Retarder Drum, AHHC, Feeder-Reverser, 30.5Lx32 & 18.4x16.1 (U7693)
- IH 1480, 1983, 2WD, 3265 Hrs., 65.5x32 Flow Grip and 14Lx16.1 Tires, AHHC, Hyd. Reel Fore & Aft, 3rd Cylinder, Strawchopper (U8113)

USED DISCS

- JD 220, 22" Center Fold, 18" Blades, Rubber Good (T7745)
- Krause 1924 "Rockflex" disc, 19" Blades, 9" Spacing, Regreasable Bearings (T7866)
- Krause 4926 Disc, Rockflex, w/Scrapers, 9" Spacing (T7653)
- Krause 1966 Disc, 31" Cut, "Rockflex", New 22 1/2" Notched Blades (T7234)
- Rhino 18" Disc - "Rockflex", 18" & 19" Blades, Hyd. Wingfold (T7749)
- IH 510 Disc, 16"10" Spacing, 22" Blades (T7542)
- IH 475 17.5" Disc (T8519)
- Krause 4921 Disc, 18" Blades Front & 19" Rear (T7564)
- Pittsburgh 9" Disc With Cylinder (T8428)
- Krause 1577A Disc, 18"9" Spacing Front & Rear, 22" Blades Front & Rear, "Rockflex" (T7076)
- Krause 2413 Disc Disc (T8433)
- Krause 1450 Disc 24" Blades, 10"8" Cut (T7719)
- Krause 1927 Disc (T7936)

USED MOLDBOARD PLOWS

- IH 710 Plow 6-18", Auto Reset, Semi-Mounted (T6813)
- JD 2500 Plow, 7x18" Bottoms, Auto Reset Coulters (T6320)
- IH 710 Plow, 4-18" Semi-Mounted, Good Condition (T7512)

USED CHISEL PLOWS

- Sunflower Chisel, 16 Shank, Folding, Reversible Points, w/Spring Cushion Shank, Repointed (T7787)
- Krause 3519 Chisel, 20 Tooth, Spring Cushioned Shanks (T7702)
- Chem Farm CPK 180 Chisel Plow, 17" Folding Hi-Clearance Spring Cushion Shanks (T7134)
- IH 55 Chisel, 10 Tooth, 10'5" Spacing, C Shank, Spring Rip (T7329)

USED TRACTORS & UNLOADERS

- Over 200 HP**
- CIH 4894, 1985, 1700 Hrs., 1000 PTO, 3 Pt. Hitch, 20.8x38 & Duals, Cab w/AC, Heat, Radio (W7617)
- Steiger ST225, 4WD, 4 Hyd. Valves, 10.8x34 Tires, Clamp-On Duals, Cab w/AC, Heat & Radio, Warranty, 270 HP, CAT Engine (W7109)
- JD 8650, Dual New 20.8x38, 3 Pt., 1000 PTO, Quad Range, 3 Rem., Cab, Air, Heat, 3100 Hrs. (W7671)
- 130 to 200 HP**
- CIH 7120, 2WD, 1989, 1400 Hrs., 4 Spd., Reverse, 14Lx16.1 & 20.8x38, 12 Wts., Deluxe Cab, Toolbox (W7547)

- CIH 7130 MFD, 1989, 1665 Hrs., 3 Hyd. Valves, 1000 PTO, 16.9x28 and 20.8x42 Tires, Cab w/AC, Heat, Radio (W8369)
- IH 5288, 1983, 4WD, 3 Hyd. Valves, 1000 PTO, 16.9x28 and 18.4x42 Tires, w/Duals, Cab w/AC, Heat, Radio (W8315)

80 to 130 HP

- IH 1066, Hydro, 2WD, 3 Pt. Hitch, Dual PTO, 18.4x38 & 16.9x28 (W7678)
- IH 886, 2WD, WFE, 3 Pt. Hitch, Dual PTO, 20.8x34 Rear, Cab w/AC, Heat Radio (W7722)
- Case 2290, PS, Dual PTO, 3 Rem., 18.4x38 Rear, Cab w/AC, Radio (W8268)

Under 80 HP

- MF 20, Gas, 540 PTO, 3 Pt. (W8173)
- Hesston 60-66 2WD, WFE, 540 PTO, 3 Cyl., 16.9x30 Rear Tires, Canopy (W8350)
- Kubota L3750, 4WD, 3 Pt. Hitch, 540 PTO, 9.5x16 and 13.6x28 Tires, 68" Bucket (W8307)
- IH 500C, Diesel, Rops, Rear Wts., Industrial Loader w/65" Deck Bucket (W4885)
- IH 574, 2WD, 3580 Hrs., 18.4x30 Rear Tires, Heavy Front Axle w/2250 Loader and 6' Fork Bucket (W8530)
- JD 2150 1984, 3150 Hrs., Diesel w/JD 146 Loader and 72" Material Bucket (W8474)

OTHER USED TILLAGE

- DMI 18' Crumbler (T8375)
- DMI 17.5' Field Cultivator (T8374)
- JD 950 Cultimulcher, 15", New Tine Points (T7752)
- IH 315 Cultimulcher, 13'2", C-Shank 14" Packer Wheels (T7330)
- Heiniker 23' Field Cultivator, Hyd. Fold, 12' Transport, 6" Spacing, Cushioned C-Shanks (T7311)

USED HAY & FORAGE

- CIH 8730 Forage Harvester, 3 Row Cornhead (U8263)
- NH 499 Haybine w/New Rolls (U7310)
- Woods RM600 Mower (U7981)
- NH 499 Haybine, 12' Cut, Hydro Swing, 3" Knife w/Guards (U7899)

USED HAY BALERS

- CIH 8580 Baler, 3 Years Old, Ready To Go To Field, Make 4x4x8 Bale, Ex. w/Mulch Hay (U7983)
- JD 348 Baler With Pan Thrower (U7898)
- Hesston 4900 Baler, 4x4x8 Bales, Pickup Rebuilt Last Year, Very Good Condition (U7673)

USED PLANTERS & DRILLS

- Deutz Allis 385 Planter, 4 Row, New Paint, Dry Fert., 4" Ribbed Press Wheel (V7744)
- JD 750 Drill, 15", No-Till, 7 1/2" Spacing, Plateless (V7640)
- JD 8300 Drill, 18x7 w/Grass-Seeder, No Pres.: Wheels, w/Cylinder & Hoses (V7958)
- Great Plains 12' Drill, No-Till, 1985 Model, New Disk Openers in 1992 (V7685)
- IH 800 6 Row Narrow Air Planter w/ Liquid Fertilizer w/Insecticide w/1000 Shaft Pump, Planter In Fair Condition (V7874)
- Great Plains 14' Drill, No-Till, 7" Spacing w/Wt. Brackets, No-Till Hitch (V7978)
- Great Plains 14' Drill, No-Till, 2x13 Press Wheels, Acrometer 7" D.D. (V8177)

All New & Used Products
Backed By
Hooper Parts & Service
(717) 768-8231

