

North Virginia

Southside (Blackstone), Va.

Wednesday, February 16, 1994

PRICES BASED ON IN WEIGHTS.
 SLAUGHTER CATTLE 34 HEAD.
 SLAUGHTER COWS 33 HEAD
 COWS BREAKING UTILITY & COMMERCIAL 2-4 41.00 - 43.50 HIGH DRESSING 44.00 - 47.50 CUTTER & BONING UTILITY 1-3 35.00 - 40.00 HIGH DRESSING 43.50 - 45.00 CANNER AND LOW CUTTER 1-2 39.00 - 42.00.

SLAUGHTER BULLS 1 HEAD BULLS Y.G. 1-2, 1600 LBS. & OVER 57.00.

FEEDER CATTLE 86 HEAD.
 STEERS 27 HEAD MED & LARGE 1 MED & LARGE 2 400-500 87.00 - 95.00 79.50 - 81.00 500-600 84.50 - 85.50 - HOLSTEIN 17 HEAD STEER MED & LARGE 2 700-900 53.00 - 59.00 900-1100 50.50 - 51.50.

HEIFERS 35 HEAD MED & LARGE 1 200-300 84.00 - 92.00 300-400 75.00 - 83.50 400-500 75.00 - 84.00 500-600 71.50 - 74.00 BABY CALVES RETURNED TO FARMS 24 HEAD NEWBORN TO 4 WEEKS OLD \$40.00-122.50 PER HEAD. OVER 100 LBS \$95.00-117.50 PER CWT.

ORANGE, VIRGINIA ON 16-FEB-94 PRICES BASED ON IN WEIGHTS.

SLAUGHTER HOGS 6 HEAD SOWS US 1-3, 300-500 LB. 37.00.

SLAUGHTER CATTLE 69 HEAD.

SLAUGHTER COWS 65 HEAD COWS BREAKING UTILITY & COMMERCIAL 2-4 42.50 - 45.50 CUTTER & BONING UTILITY 1-3 45.00 - 47.00 CANNER AND LOW CUTTER 1-2 34.00 - 43.00.

SLAUGHTER BULLS 4 HEAD BULLS Y.G. 1-2, 900-1300 LB. 57.00 -

57.50 Y.G. 1-2, 1300-1600 LB. 60.00 Y.G. 1-2, 1600 LBS. & OVER 60.50.

FEEDER CATTLE 124 HEAD.

STEERS 41 HEAD MEDIUM 1 LARGE 1 SMALL 1 MED & LARGE 2 300-400 - 89.50 99.50 400-500 97.00 - 500-600 80.00 - 89.00 - 68.25 - 600-700 - 73.00 - 74.00 - - 800-900 - 71.00 - 72.50.

HEIFERS 64 HEAD MEDIUM 1 LARGE 1 SMALL 1 MED & LARGE 2 300-400 83.00 - 84.00 - 70.00 85.50 400-500 80.50 - 84.75 - 68.50 - 73.50 - 500-600 72.00 - 76.00 68.50 - 76.75 68.50 - 600-700 - 70.50 - 74.00 - - 800-900 - 54.00 - 55.00.

BULLS 19 HEAD SMALL 1 MED & LARGE 2 300-400 - 71.00 500-600 68.00 - 73.00 - BABY CALVES RETURNED TO FARMS 24 HEAD NEWBORN TO 4 WEEKS OLD \$60.00-95.00 PER HEAD. OVER 100 LBS \$107.00-110.00 PER CWT.

SMITHFIELD, VIRGINIA ON 16-FEB-94 PRICES BASED ON IN WEIGHTS.

SLAUGHTER HOGS 96 HEAD SOWS US 1-3, 300-500 LB. 33.00 - 38.00 US 1-3, 500 LBS. & OVER 42.00 BOARS 300-600 LB. 28.00 - 30.40.

FEEDER CATTLE 174 HEAD STEERS 21 HEAD MEDIUM 1 MED & LARGE 2 400-500 99.00 - 102.00 - 500-600 - 85.00 - 86.50.

HEIFERS 83 HEAD MEDIUM 1 SMALL 1 MED & LARGE 2 300-400 - 74.00 - 79.50 77.00 - 85.00 400-500 - 71.00 - 75.00 500-600 70.00 - 75.00 67.00 - 68.00 65.00 - 73.50 600-700 62.50 - 72.00.

BULLS 70 HEAD MEDIUM 1 SMALL 1 MED & LARGE 2 200-300 - - 105.00-112.00 300-400 - 84.00 - 91.00 - 400-500 83.00 - 89.00 - 88.00 - 95.00 500-600 - - 72.00 - 80.00 600-700 69.00 - 72.00 - 64.50 - 65.00.

Four States Livestock

Hagerstown, Md.

February 16, 1994

Report supplied by Auction

SLAUGHTER COWS: 162 HEAD, 1.00-2.00 HIGHER. UTILITY 47.00-51.00; HIGH DRESSING 51.00-53.75, FEW 55.00; CANNERS 44.00-48.00; SHELLY 44.00 DOWN.

BULLS: YG#1 1300-1500 LBS. 62.00-63.50; YG#2 56.00-59.50. FED STEERS: 25 HEAD. HIGH CHOICE TO PRIME 4 HEAD 1250-1400 LBS. 76.00-77.25; HIGH CHOICE 1050-1250 LBS. 70.00-72.50; SELECT 1200 LBS. TO 65.00; 1500-1700 LBS. TO 61.75.

FED HEIFERS: 30 HEAD. CHOICE 1100-1300 LBS. 71.50-72.50; 900-1075 LBS. 68.00-71.00; SELECT 62.00-67.00.

VEAL CALVES: CHOICE 1 225 LB. AT 87.00; CULLS 85-110 LBS. 45.00-50.00; 50-80 LBS. 37.00-44.00; WEAK/ROUGH 35.00 DOWN.

FARM CALVES: HOLSTEIN BULLS,

STEADY PRICES. #1 90-120 LBS. 125.00-150.00; 80-85 LBS. 75.00-100.00; HOLSTEIN HEIFERS #1 95-120 LBS. TO 175.00; 75-90 LBS. 100.00-150.00; BEEF X BULLS 80-120 LBS. 110.00-155.00; HEIFERS 95.00-130.00.

BUTCHER HOGS: US#1&3 215-260 LBS. TO 45.00; 1 LOT 212 LBS. AT 42.25; 1 LOT 185 LBS. AT 41.00.

SOWS: 500-700 LBS. 40.00-43.00; 300-500 LBS. 34.00-38.00; FEW 39.00-42.00.

BOARS: 400-650 LBS. 31.50.

STOCK CATTLE: 87 HEAD. STEERS FEW 200-300 LBS. 90.00-111.00; 400-700 LBS. 65.00-75.00; 700-900 LBS. 62.00-72.00; HOL 800-950 LBS. 52.00-56.00.

HEIFERS: 300-500 LBS. 65.00-70.00; 500-700 LBS. 63.00-69.00.

BULLS: 400-600 LBS. 68.00-76.00; 600-800 LBS. 62.00-69.00.

DAIRY REPLACEMENTS: 20 HEAD. LARGE SPRINGERS 960.00-1210.00; MEDIUM 800.00-950.00; HOL BULLS

BY THE POUND, 700-975 LBS. 60.00-72.00; HOL HEIFERS 200-400 LBS. TO 98.00; 500-700 LBS. 65.00-73.00.

LAMBS: CHOICE 80-95 LBS. 66.00-77.00; 60-75 LBS. 73.00-88.00; 1 LOT 140 LBS. AT 45.50.

SHEEP: 20.00-30.00; FEW TO 43.00. GOATS: NONE.

PIGS AND SHOATS: 35 HEAD. BY THE HEAD FROM TESTED HERDS 40-50 LBS. TO 22.00; 60-70 LBS. TO 28.00; #2&3 80-100 LBS. 26.00-28.00; BY THE POUND, 1 LOT 76 LBS. 42.00; 95-115 LBS. 34.00-41.00.

SPECIAL SPRING 4-H AND FFA MARKET HOG SHOW TUES., FEB. 22 (SHOW) AND WED., FEB. 23 (SALE) AT 4 STATES. BUYERS ARE NEEDED TO SUPPORT THESE YOUNG PEOPLE.

OUR FIRST SPRING FEEDER CATTLE SALE WILL BE WED., MARCH 2, 7:30 P.M. OTHER SPECIAL SALES WILL BE MARCH 23 AND 30; APRIL 13 AND 27; MAY 11 AND 25.

K

KEYSTONE CONCRETE PRODUCTS

INC.

477 East Farmersville Rd.
New Holland, PA 17557
(717) 896-2201



"WAFFLE SLAT"
Syrri Con Corporation

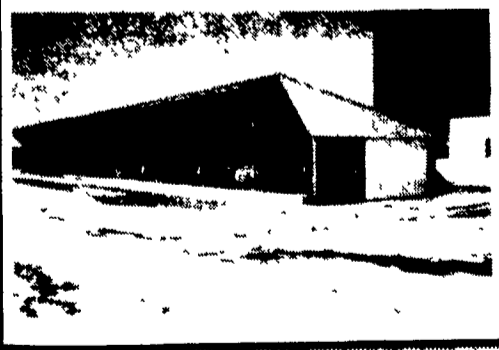


SLATTED FREE STALL BARN

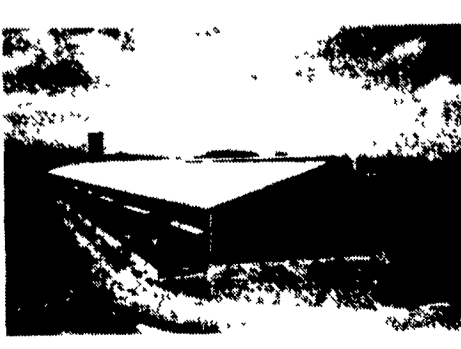
Slatted Hog Barn



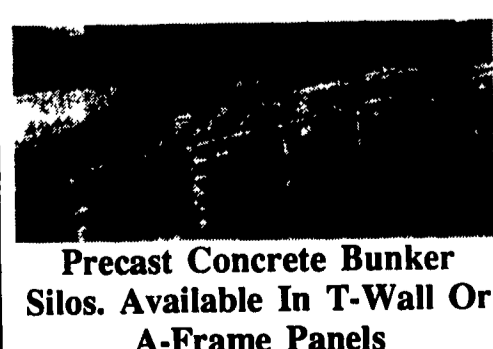
Slatted Heifer Barn



Slatted Beef Barn

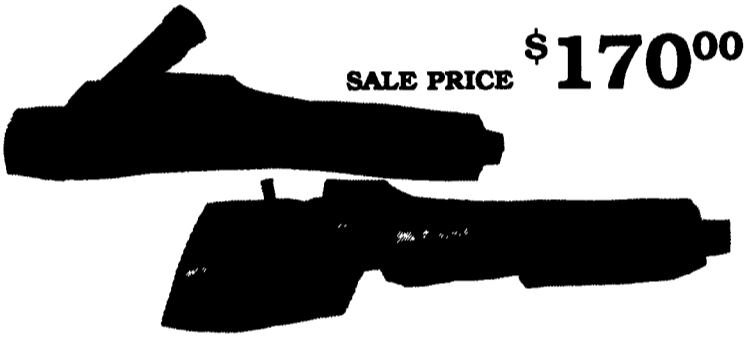


Bunker Silos



Precast Concrete Bunker Silos. Available In T-Wall Or A-Frame Panels

Stewart Clippers by Oster



SALE PRICE **\$170⁰⁰**

Please add \$3.00 for UPS - PA Residents add 6% tax (unless exempt)

ALSO SEE US FOR: Air Motors, Pneumatic Hand Tools, Gates Push-Lock Hoses, Drill Bits & More

BRUBACKER PNEUMATICS

231 HAHNSTOWN ROAD, EPHRATA, PA 17822

MAHONING OUTDOOR FURNACES

"The Natural Way To Heat Your Home"

Burns Coal, Wood, Oil or Natural Gas
 FUEL USED IN STANDARD UNIT: WOOD & COAL & WOOD BY-PRODUCTS (SAWDUST, PAPER, ETC.) FUEL USED IN MULTI-FUEL MODEL: SAME AS ABOVE INCLUDING OIL, PROPANE, NATURAL GAS

Efficiency Rating 83% to 85% - Cut Emissions by 90%
 3-Year Warranty Except Electrical Components (1 Year)
 35 Years Heating Experience

PROUDLY BUILT IN INDIANA COUNTY, PENNSYLVANIA
 100,000 - 500,000 BTU 36"-60" Fire Boxes

★ The only outdoor furnace made with a Catalytic Combuster. ★ Mahoning Catalytic Combuster Will Help In The Following Ways:

1. Burn one cord of wood which equals 166 gallons of oil.
2. Your fuel source becomes enormous inexhaustible and poses few risks to public safety.
3. Overall efficiency of 85% which means the heat no longer goes up the chimney!
4. You get more heat from a log compared to the non-cat furnace.
5. More burn time - less reloading time!
6. Zap 90% of pollutants, made from fire source.
7. Saves you a lot of money!
8. User friendly, emits no smoke!

SCHOENLY'S NURSERY

5510 Boyertown Pike, Birdsboro, PA 19508

(610) 689-5230

Cut Your Heating Cost With Our Outdoor Furnace