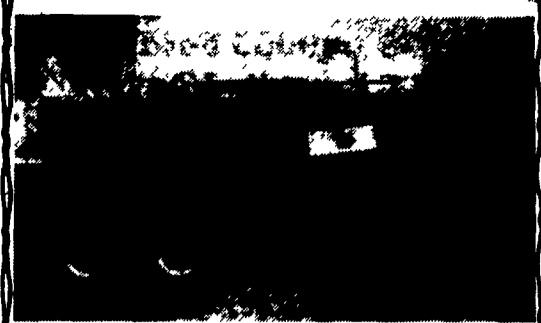


- * '85 LN9000 Ford tractor, 350 Cummins, low mileage, 11x22.5 tires, AC, PS, 9 speed, excellent condition \$16,500
- * 18' Morgan refrigerated body w/ThermoKing, roll-up rear door, new motor in ThermoKing, very good condition, \$5,000
- * 18' Hackney refrigerated body w/cold plates, roll-up rear door, good condition. \$2,500
- * 14' Hackney refrigerated body w/cold plates, roll-up rear door, good condition, \$1,000

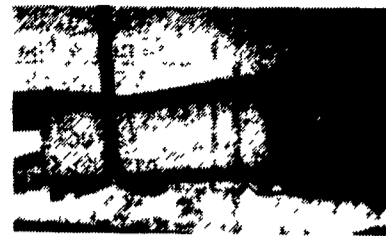
Ledy's, ask for Ron Ruth
(215) 723-4606



1979 Aluminum Lime Trailer Air Slide, Aluminum Wheels, Rebuilt 4 Cylinder Wisconsin, Airlid, Good Tires
\$19,900
(717) 656-9545

35 TRUCKS & TRAILERS

Gooseneck Flatbed Trailer, 8x24, beavertail triaxle, 16' gooseneck stock trailer. 301/898-9841 after 6pm



42ft--Live Bottom Trailers
Cheaper ones Valued at \$16,000
Higher ones Valued at \$28,000 or \$30,000
Phone 717-438-3354 Between 8 to 4:30pm

9' snow plow, truck mounted adjustable frame w/electric hyd pump 717/244-2039

Atlantic office trailer, 8'x32' roof tight, \$90 215 886 5000

Chevy C30, 1985, w/11 steel flatbed, 454, AT, PS, PB, AC, good condition, \$5900, '87 Ford F350 w/12' flatbed, 460, AT, PS, PB, AC, good condition, \$10,500 717-345-4882

Damp line or poultry litter spreader truck, freighter chassis w/18' New Leader L70 spreader body, 30" floor chain, all hydraulic power, excellent condition, \$11,700 (610)298-2870

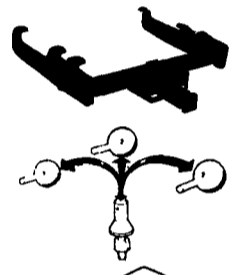
Diesel Engines Detroit, 318 16V71, 12V71, 671, V-653, 6V92, 8 2, Chev diesel 6 2 Other engines and truck parts Reasonable prices Call after 6PM, (610)944-9871

FOR SALE 1991 Chevy Cheyenne, full size, 4x4 pickup truck, 26,000 miles, \$12,000 Juniata Co 717-436-8377

Fruehauf trailer 1970, 40' recently inspected excellent shape perfect for storage etc Must sell Call anytime, 215 756 4158

Roll back truck body, 20 ft steel, off C-60 Chevy, \$2500 Call (914)895-3160 up to 9PM

TRAILER HITCHES
Quality & Price



- ★ Free Catalog
- ★ MC/Visa/Disc
- ★ UPS Shipping

Weaver Distributing
1-800-Weaver-D
1-800-932-8373
Fax 717-885-2887

JONES BEST BUY USED TRUCKS

JONES PONTIAC • HONDA
GMC TRUCK
1335 Manheim Pike, Lancaster

Prices based on straight sale, Tax & Tags extra.
Trades accepted at actual cash value
Must present this ad at time of purchase for sale price.

717-394-0711

 '93 GMC CUBE VAN AT, 350, AC, 14' Gruman Olson #7986 Was \$21,900 SALE \$17,700	 '92 CHEV BEAUVILLE VAN 15 Pass, AT, AC, 350, 20,000 Miles, Vinyl Seats #7800 Was \$18,900 SALE \$15,900	 '86 CHEV BLAZER 4x4, Silverado, AT, AC, V8 #7994 Was \$9,995 SALE \$7,350	 DIESEL '91 FORD F350 CREW CAB Diesel, AT, XLT, AC, Loaded #7932 Was \$19,900 SALE \$18,100
 '91 CHEV K15 XCAB 4x4 Silverado, V8, AT, AC #7897 Was \$18,100 SALE \$17,000	 '88 BRONCO II 4x4, XLT, V6, AC, 5 Spd. #7998 Was \$9,995 SALE \$7,450	 '84 CHEV 3/4 TON 4x4 350, AT, 8600 GVW, AC, #7967 Was \$7,495 SALE \$6,500	 DIESEL '88 CHEV BLAZER 4x4 Diesel, AT, AC, Silverado #7985 Was \$11,900 SALE \$8,800
 '93 GMC 3500 454, AT, AC, SLE, 10,000 GVW, #7906 Was \$21,995 SALE \$19,950	 '88 DODGE CARGO VAN AT, AC, Alum. Wheels #7924 Was \$5,995 SALE \$4,550	 '83 FORD RANGER 4x4 V6, AT, AC, #7979 Was \$5,495 SALE \$4,100	 DIESEL '88 GMC SUBURBAN 4x4 Diesel, AT, AC, Sierra Classic #7981 Was \$14,900 SALE \$10,950

FAULKNER

CHEVROLET TRUCK CENTER

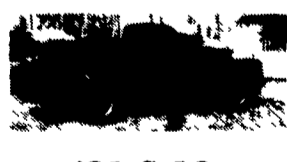
717-397-0601

717-397-0601

ON THE HARRISBURG PIKE BETWEEN PARK CITY MALL & LANCASTER CITY



'93 CHEVY 3/4 TON Extended Cab, Silverado, All Power Equip., Heavy Duty Towing Pkg., With 454 V8, Auto Trans, Low Miles
Reduced To \$19,995



'91 S-10 Beautiful 2-Tone Garnet & Grey, Air Cond, 4.3L V-6, Auto. Trans, Tahoe Pkg. AM-FM Stereo Cass, Only 23,000 Miles!!
\$10,495



'88 DODGE DAKOTA 4x4 V6, Automatic, Only 45,000 Miles, Long Bed, Excellent Condition!
Now **\$9,495**



'91 CHEVY S-10 6 Cyl., 5 Speed, AM-FM Stereo, Great Shape! Only 42,000 Miles, 48 Mo. Financing Available
Special \$5,995



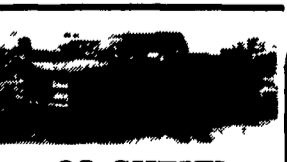
'91 FORD F150 6 Cyl. Air Cond, Power Windows & Locks, Tilt Wheel, Cruise Control, Beautiful Maroon Finish With Matching Fiberglass
Reduced \$10,995



'92 FORD RANGER XLT 12,000-One Owner Miles, Need We Say More!!
\$9,995

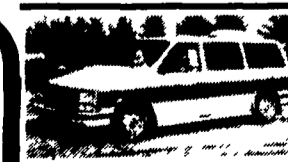


'90 SUBURBAN 3/4 TON 454 Big Block V8, Auto Trans, Air Cond. Full Power Equip.
\$15,995



'92 CHEVY SILVERADO SPORTSIDE Bright Red, Alloy Wheels, 5 Speed, Power Windows & Locks, Tilt, Cruise, Get Ready For Spring
Reduced To \$13,795

GUARANTEE LOWEST PRICES ON NEW CHEVROLET TRUCKS, BLAZER, VAN & SUBURBAN



'89 DODGE GRAND CARAVAN LE -The One You've Been Waiting For, Full Power Equip., V6, Low One Owner Miles
\$11,495



'92 FORD 4 DR EXPLORER 4x4 Auto Trans., V6, Tilt Wheel, Cruise Control, Metallic Red, This Weeks Special
\$17,995