

35 TRUCKS & TRAILERS

'88 Chevy Scottsdale 2500, ext cab, 305 FI, 5 spd, PS, PB, AM-FM w/ utility boxes & ladder rack, 58,000 1 owner miles, \$9,400 717-733-2873

'88 Ford XLT E150 8 passenger van, 302 EFI, auto, PS, PB, PW, PDL, cruise, tilt dual air, privacy glass, red & white, local 1 owner, like new, \$9,200 717 733-2873

Snowmobile trailer, 8x10 tilt bed, fully enclosed, new lights, spare, very good condition, \$795 OBO, 1950 Dodge w/12' grain dump, 230000 GVW, 2-speed rear very good condition, \$595 OBO 301-898-3407

'89 Chevy Beauville 8 passenger van, 350 FI, auto, PB, PS, PW, PDL, cruise, tilt, dual air, privacy glass, red & white, 54,000 miles, excellent condition, 1 owner, \$10,500 717-733-2873

'90 Dodge 150 LE Club Cab, 4x4, 318 FI, auto, PS, PB, AM-FM cass, charcoal & silver 26,000 miles, 1 owner \$13,500 717 733 2873

90 Dodge D150, 4x4, 318 EFI, auto, PS, PB, AM-FM cassette, 2 tone blue, 33,000 miles, local 1 owner, excellent condition, \$11,500. 717-733-2873

'90 Ford XL F150, 300 6 cyl EFI, 5 spd, PS, PB, AM-FM cassette, dual tanks, Rally Whls, 45,000 1 owner miles, black, \$8,300 717-733-2873

1992 Ford F350 crew cab, dually 460 gas, XLT Lanat, equipped to pull trailer w/ electric or vacuum brakes 610-669-7943.

35' Aluminum Stecb Dump Trailer, Nice Shape, 1984 S model Int, 466 engine, long wheel base, air brake, \$7500 (610)944-9871

'76 Ford F-250, 4x4, pickup, runs good, \$1,800 OBO '79 General gooseneck trailer, 16' grain dump w/sides, \$4,000 OBO (609)935-4060

83 Ford F250, super cab, 460 auto, towing package w/9' stake body, \$3,600 717-733-2873

'86 Chevy Custom C20, HD, 1/2 ton, 350 auto, PB, PS, AM-FM, 8,600 GVW, red, 66,000 miles, 1 owner, excellent condition, \$7,400 717-733-2873



1984 Mack MH613
9 Spd., Mack 350, P/S
\$8,900
(610) 944-6421

Moritz Stock Trailers - 1994 - Spare holder & wheel

Gooseneck 7x7x15 5200# axles Pa. set-up Red Retail \$5593 Reduced \$4500

Bumper 6x7x12 3500# axles Pa. Set-up, Gray Retail \$3526 Reduced \$3200

Ponderosa - 1994 spare holder & wheel Torsion Axles

Bumper 6x6 1/2 x16 3500# axles Pa. set-up Blue, Black, Brown Retail \$2950 Reduced \$2850

Gooseneck 6x6 1/2 x16 6000# axles Pa. set-up plywood lined red fill nose Retail \$4075 Reduced \$3875

Custom Fab - 1993 Pa-Set-Up 3500# axles Utility with rails 16' Black \$1550 Reduced \$1250

Custom Fab - 1993 8x7x20 7000# torsion axles Pa set-up Aluminum Heavy duty Retail \$10,500 Reduced \$8800

Other new and used trailers in stock or custom order

Fisher Trailer Sales RD #2 Middle Rd. (717) 242-0941 McVeytown, Pa. 17051

Huntingdon Equipment Rentals Available GOOD USED EQUIPMENT

Huntingdon Valley, PA • 215-672-9667 • 1-800-543-3833 • Eddie

FALL CLEARANCE



T-600 Earth Wheel 8' Cut x 54' Deep, Diesel, Street Pads



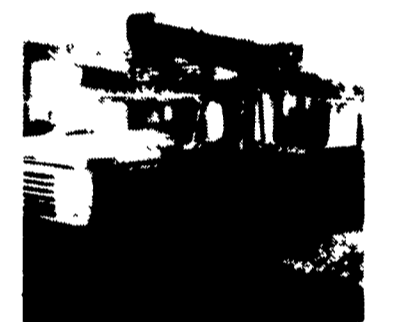
Dump Truck 71 GMC Fleet Maintain with All Service Records, V8, Auto, Inapt. & Job Ready.



International Presser Digger This Unit Is Ready To Work, Priced For Quick Sale \$9,500 \$8,500



Holan 70' Double Bucket 75' working height mounted on 1981 Western Standard, 6x6 Flatbed, CAT 320B, Auto.

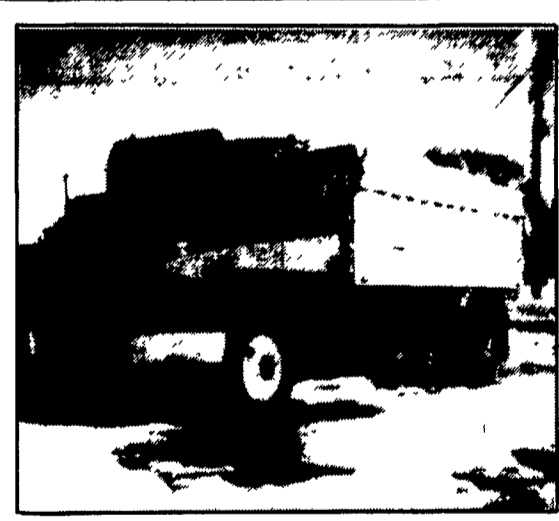


Need a Lift? We Have A Large Selection Of Boom Trucks Up To 14,000 lbs. Cap. Some With Post Diggers.



Bucket Trucks 28' to 65' Gas and Diesel. Call For Details.

DIGGER DERRICKS/AERIAL BUCKETS/UTILITY EQUIPMENT



FREIGHTLINER

Cummins 190 HP
 Fuller 6 Speed
 Rockwell Axles
 F/A 12000#, RA 21,000#
 1/4" Frame Insert
 Michelin Tires 11R22.5
 AC, PS, Deluxe Interior
 GVW @ 33,000#



DUTCHMAN'S TRUCK SERVICE, INC.

2355 N. READING ROAD, P.O. BOX 325
 PA TURNPIKE EXIT 21
 DENVER, PENNSYLVANIA 17517

"A GOOD DEALER IS A GOOD INVESTMENT"
 1-717-336-2867 1-800-769-9887 - PA
 FAX 1-717-656-9943
\$43,587.00 COMPLETE



EBY DUMP BODY

Aluminum Body
 16' Length x 8' Wide
 54" Sides
 Gray Fitted Tarp
 RL-F-60 Hoist
 4" I-Beam X-Centers

PHIL HIGGINS

ROGER AUKER

BLAIR MOYER

CASH FOR USED DIESEL TRUCKS!

- WE NEED 1/2 TON TO ONE TON:**
- FORD DIESELS
 - SUPERCABS
 - CREW CABS
 - DODGE CUMMINGS
 - 2WD or 4x4
 - DUALIES
 - DUMPS
 - UTILITY BODY
 - FLAT BEDS
 - CAB & CHASSIS


PLEASE! PLEASE! PLEASE!

Before you sell or trade your diesel in somewhere else for LESS, CALL US!


We Pay More For Used Diesel Trucks Than Anyone.

TRY US!


717-949-2000 Ask for Smokey or Kay




KELLER BROS. FD 7, Box 405 Lebanon, PA 17042




1986 FORD F250 WORK TRUCK
 300-6cyl, Auto, P.S.
 120,000 Miles
\$2,900



1979 CHEVY C70 DUMP
 427, 5&2 10 Ft Body
\$4,500



'85 MACK DIESEL
 29,500 GVW, 20 Ft. Box, Lift Gate, Nice
\$8,450



'90 FORD E-250 CARGO VAN
 302 EFI, Black & Blind
 71,200 Miles
\$8,900

1979 International Crane Truck... \$4,900
 1990 Ford 15-Passenger Van 351 EFI Auto & Air..... \$8,900
 1981 International, Dump Diesel.. \$8,700
 1989 Toyota 4x4 Pickup..... \$9,250
 1986 Ford F150 Super Cab..... \$4,750



'91 CHEVY ASTRO CARGO VAN
 4:3 V-6, Auto, P.S. & Air
 72,108 Miles
\$6,900



1986 CHEV 12' ALUMINUM WALK-IN VAN
 350 V-8, Auto, PS, Roll Up Rear Door, Dual Wheels
\$7,900

WILLIAM H. WESSELS USED CARS

811 Route 15 Dillsburg, PA
 1-800-440-4433 1-717-432-2918
 Notary Public - Temporary Tags