

National Grain Market

St. Joseph, Mo.

Wednesday, February 9, 1994

DAILY NATIONAL GRAIN SUMMARY GRAIN AND SOYBEAN PRICES MOVED MODERATELY TO SHARPLY HIGHER, WEDNESDAY. WINTRY, COLD WEATHER IN MIDWEST AREAS INCREASED LIVESTOCK FEED USAGE, BOOSTED WINTER WHEAT KILL CONCERNS AND CAUSED TRANSPORTATION PROBLEMS DUE TO ICY CONDITIONS. WHEAT 3 TO 12 CENTS HIGHER. CORN 3 TO 7 CENTS HIGHER. SORGHUM 5 TO 8 CENTS HIGHER. SOYBEANS 4 TO 8 CENTS HIGHER. WHEAT PRICES GAINED MOMENTUM ON COMMISSION HOUSE BUYING. LIGHT EXPORT DEMAND FOR WHEAT AND WINTERKILL CONCERNS DUE TO SEVERE WEATHER IN WINTER WHEAT AREAS, SUPPORTED PRICES. IDEAS CHINA MAY SEEK ADDITIONAL U.S. WHEAT THIS CROP YEAR WAS ALSO A PLUS FACTOR. SHARPLY HIGHER CORN AND BEAN PRICES REFLECTED LIGHT FARMER SELLING. COLD, WINTER WEATHER CONTINUED IN MIDWEST AREAS

FORCING LIVESTOCK REQUIREMENTS TO INCREASE AND HAMPED MOVEMENT OF GRAINS. EXPORT NEWS: JAPAN BOUGHT 19,047 TONNES DARK NORTHERN SPRING WHEAT, 5,000 TONNES WESTERN WHITE, AND 14,047 TONNES HARD RED WINTER FOR APRIL SHIPMENT. USDA ACCEPTED BIDS TO SELL 12,000 TONNES SOYBEAN TO ALGERIA UNDER BFP FOR FEB/MAR SHIPMENT. USDA ACCEPTED ONE BID TO SELL 490 TONNES OF SUNOIL TO MEXICO UNDER SUNFLOWERSEED OIL ASSISTANCE PROGRAM FOR APRIL SHIPMENT. DATE CHANGE YEAR AGO TRUCK BIDS: 02/09/94 02/08/94 02/10/93 WHEAT: KANSAS CITY 3.75-3.76 UP 6 3.72-3.75 MINNEAPOLIS 5.21 1/4 UP 12 1/4 3.89 PORTLAND 3.53-3.57 UP 4-3 4.04-4.07 ST. LOUIS 3.61-3.69 UP 5-6 3.80-3.83. CORN, U.S. NO. 2 YELLOW: KANSAS CITY 2.97-2.99 UP 4 2.16-2.19 MINNEAPOLIS 2.82 1/2 UP 6 2.02 1/2 SO. IOWA 2.95-2.98 UP 4-3 2.12 OMAHA 2.88-2.89 UP 7-4 2.00. SOYBEANS, NO. 1 YELLOW: KANSAS CITY 6.87-6.89 UP 4 5.60-5.62 MINNEAPOLIS 6.68 1/2 UP 8 5.43 3/4 SO. IOWA 6.81-6.86 UP 4 5.59 C. ILL. PROCESSORS 6.82 1/2-6.87 1/2 UP 8 1/2-5 NA.

*TRUCK BIDS FOR KANSAS CITY, US NO. 1 HARD RED WINTER WHEAT, ORDINARY PROTEIN. MINNEAPOLIS, US NO. 1 DARK NORTHERN SPRING WHEAT, 14% PROTEIN. PORTLAND, NO. 1 SOFT WHITE WHEAT, ST. LOUIS, NO. 2 SOFT RED WINTER WHEAT. FUTURES CLOSE: KANSAS CITY (MAR) WHEAT 3.67 1/4 UP 6 3/4 3.52 1/4 MINNEAPOLIS (MAR) WHEAT 3.81 1/4 UP 7 1/4 3.39 CHICAGO (MAR) WHEAT 3.75 3/4 UP 6 1/2 3.68 (MAR) CORN 2.95 1/2 UP 4 2.13 1/2 (MAR) SOYBEANS 6.78 1/2 UP 4 5.68 3/4. EXPORT: BARGE OR RAIL, PORT OF NEW ORLEANS OR NORTH TEXAS GULF. NO. 1 HARD RED WINTER WHEAT ORDINARY PROTEIN 4.00 1/4 UP 6 3/4 4.10 1/4 NO. 2 SOFT RED WINTER WHEAT 4.01 3/4-4.04 UP 6 3/4-5 4.04-4.06 NO. 2 YELLOW CORN 3.16-3.18 UP 2-3 2.37 1/2-2.38 1/2 NO. 2 YELLOW SORGHUM RAIL 5.46 UP 8 BARGE 5.47 UP 5 4.29-4.29 NO. 2 YELLOW SOYBEANS 7.07 1/2-7.08 UP 3 1/2-3 5.96-5.97 BIRD. THIS REPORT A SERVICE OF U.S. DEPARTMENT OF AGRICULTURE, LIVESTOCK AND GRAIN MARKET

3.40-3.90; AVERAGE 3.75; BARLEY NO. 3 RANGE 2.20-2.60, AVERAGE 2.45; OATS NO. 2 RANGE 1.60-1.85, AVERAGE 1.74; SOYBEANS NO. 1 RANGE 6.48-6.91, AVERAGE 6.65; NEW EAR CORN RANGE 75.00-103.00, AVERAGE 87.31. CENTRAL PENNSYLVANIA CORN NO. 2-Y RANGE 3.20-3.36, AVERAGE 3.28; LIGHT GARLICKY & BETTER WHEAT NO. 2 RANGE 3.40-3.80, AVERAGE 3.69; BARLEY NO. 3 RANGE 2.20-2.45, FEW REPORTED 2.96, AVERAGE 2.41; OATS NO. 2 RANGE 1.65-1.80, FEW REPORTED 1.95, AVERAGE 1.76; SOYBEANS NO. 1 RANGE 6.49-6.80, AVERAGE 6.65; FEW REPORTED NEW EAR CORN RANGE 69.00-80.00, AVERAGE 77.25. WESTERN PENNSYLVANIA CORN NO. 2-Y RANGE 2.65-3.21, FEW REPORTED 3.35, AVERAGE 2.99; LIGHT GARLICKY & BETTER WHEAT NO. 2 RANGE 3.40-3.90, AVERAGE 3.64; BARLEY NO. 3 RANGE 2.35-2.40, AVERAGE 2.38; OATS NO. 2 RANGE 1.40-1.90, AVERAGE 1.60; FEW REPORTED OLD EAR CORN RANGE 61.00-65.00, AVERAGE 63.00. MONTH AGO CORN NO. 2-Y 3.27; LIGHT GARLICKY & BETTER WHEAT NO. 2 3.79; BARLEY NO. 3 2.35; OATS NO. 2 1.72; SOYBEANS NO. 1 6.78; FEW REPORTED NEW EAR CORN 84.46. YEAR AGO CORN NO. 2-Y 2.37; LIGHT GARLICKY & BETTER WHEAT NO. 2 3.44; BARLEY NO. 3 1.83; OATS NO. 2 1.57; SOYBEANS NO. 1 5.55; FEW REPORTED NEW EAR CORN 60.96.

Eastern PA & NJ Poultry Report

Atlanta, Ga. Tuesday, February 8, 1994

Trading on light type fowl was noted as unchanged to slightly higher price levels than prior week but sales were too few to report on heavy hens. Offerings were short to no better than in balance but availability was increasing for next week's processing needs. Demand moderate to sometimes good. Undertone at least steady. LIGHT TYPE HENS CENTS PER LB., DAY OF NEGOTIATION, GENERALLY FOR SLAUGHTER WITHIN THE NEXT 10 DAYS RANGE MAJORITY AT FARM BUYER LOADING 1-3 CENTS/LB. FOB PLANT TOO FEW TO REPORT HEAVY TYPE HENS (7 POUNDS AND UP) * PRELIMINARY PRICE, CENTS PER LB., GENERALLY FOR SLAUGHTER THE WEEK OF 14-FEB-94 RANGE MAJORITY AT FARM BUYER LOADING TOO FEW TO REPORT FOB PLANT TOO FEW TO REPORT * WEIGHTS UNDER 7 LBS. SUBJECT TO DISCOUNT.

Friend's Stockyard Inc.

Accident, Md. 21520 Report Supplied by Auction February 7, 1994

STOCK BULLS AND STEERS (200-500 LBS.) 70.00-90.00. STOCK HEIFERS: 60.00-78.00. SLAUGHTER STEERS: GOOD TO CHOICE 69.00-72.50, MEDIUM TO GOOD 61.00-68.50, HEAVY CHOICE OVER 1450 LB. 64.00-68.00. HOLSTEIN STEERS: HEAVY 56.00-60.00, LIGHT 48.50-56.50. SLAUGHTER HEIFERS: GOOD TO CHOICE 64.00-70.00, MEDIUM TO GOOD 46.00-57.00. BULLS: HEAVY 55.00-65.00, LIGHT 46.00-57.00. COWS: FEW HIGH DRESSING 45.00-51.75, UTILITY (HOLSTEIN) 44.00-50.00, COMMERCIAL TO GOOD 39.00-45.00, CULL COWS 38.00 AND DOWN. VEALS: GOOD TO CHOICE 70.00-85.00, MEDIUM TO GOOD 50.00-69.00. BOB CALVES. 40.00 AND DOWN. HOLSTEIN BULL CALVES — RETURN TO FARM (90 TO 120 LB.)-100.00-148.00. HOLSTEIN HEIFER CALVES — RETURN TO FARM (100 TO 120 LB.)-100.00-120.00. BEEF CROSS CALVES — RETURN TO FARM UP TO 120.00. HOGS TOP QUALITY 46.00-48.50, HEAVY 44.00-45.75, LIGHT 39.00-43.50. SOWS. 34.00-37.00. MALE HOGS: 26.00-31.00. LAMBS: 62.00-70.00. FEEDER LAMBS: 60.00-75.00. SHEEP: 15.00-24.00. LIVESTOCK PRICES ARE ALL GIVEN PER HUNDRED WEIGHT!

Pa. Grain

Monday, February 7, 1994 Report supplied by PDA

COMPARED WITH THE MARKET FOR LAST MONDAY, FOR SOUTHEASTERN, CENTRAL, AND SOUTH CENTRAL PA: CORN MOSTLY STEADY; WHEAT STEADY TO .08 HIGHER; BARLEY AND OATS STEADY TO STRONG; SOYBEANS STEADY TO .20 LOWER; EAR CORN STEADY TO 5.00 HIGHER.

SOUTHEASTERN PENNSYLVANIA CORN NO. 2-Y RANGE 3.15-3.40, FEW REPORTED 3.08, AVERAGE 3.26, CONTRACT FOR HARVEST 2.60-2.79; @WHEAT NO. 2 RANGE 3.72-3.90, AVERAGE 3.82, CONTRACT FOR HARVEST 3.29-3.51; BARLEY NO. 3 RANGE 2.40-2.60, FEW REPORTED 2.75, AVERAGE 2.52, CONTRACT FOR HARVEST 1.95-2.10; OATS NO. 2 RANGE 1.65-1.85, AVERAGE 1.75; SOYBEANS NO. 1 RANGE 6.48-6.91, AVERAGE 6.71, CONTRACT FOR HARVEST 6.19-6.23; FEW REPORTED GR. SORGHUM #2 RANGE 2.78, AVERAGE 2.78, CONTRACT FOR HARVEST 2.50; FEW REPORTED NEW EAR CORN RANGE 83.00-95.00, FEW REPORTED 110.00, AVERAGE 92.20.

SOUTH CENTRAL PENNSYLVANIA CORN NO. 2-Y RANGE 3.15-3.35, AVERAGE 3.28; LIGHT GARLICKY & BETTER WHEAT NO. 2 RANGE 3.42-3.80, AVERAGE 3.58; BARLEY NO. 3 RANGE 2.10-2.56, AVERAGE 2.35; OATS NO. 2 RANGE 1.50-1.80, FEW REPORTED 1.40, AVERAGE 1.68; SOYBEANS NO. 1 RANGE 6.34-6.70, AVERAGE 6.51; FEW REPORTED NEW EAR CORN RANGE 75.00-90.00, FEW REPORTED 100.00. SOUTHEASTERN, CENTRAL & SOUTH CENTRAL SUMMARY CORN NO. 2-Y RANGE 3.15-3.36, AVERAGE 3.27; LIGHT GARLICKY & BETTER WHEAT NO. 2 RANGE

Philadelphia Eggs

Thursday, February 10, 1994

Report Supplied by USDA MARKET COMMENT: TRADE SENTIMENT WAS STEADY. MOVEMENT OF CARTONED EGGS INTO RETAIL CHANNELS WAS FAIR TO INSTANCES FAIRLY GOOD. ROADS WERE HAZARDOUS WHERE HEAVY SNOW ACCUMULATIONS WERE STILL PRESENT, AND TRANSPORTATION WAS DISRUPTIVE. SUPPLIES WERE GENERALLY ADEQUATE TO INSTANCES TIGHT WHEN DELIVERIES WERE DELAYED. A EXTRA LARGE .69% -.74, A LARGE .67% -.72, A MEDIUM .63% -.66.

Diffenbach Auction Center

New Holland, Pa. Monday, February 7, 1994

Report Supplied by Auction TOTAL LOADS: 266. ALFALFA: 50.00-177.00. MIXED HAY: 75.00-195.00. TIMOTHY: 70.00-162.00. CLOVER: 90.00-120.00. ORCHARD GRASS: 77.00-132.00. STRAW: 107.00-165.00. EAR CORN: 97.00-122.00. FIREWOOD: 5 LOADS 50.00-90.00 LOAD.

BOYDELL FARMS

302 Iona Road, Lebanon, PA 17042 Phone: 717-272-8943

DISTRIBUTORS FOR: SILO QUEEN



SOYBEANS

Agri & North Coast

8836 354,284
9139 Shore and
9329 The All New 374
9434



Also Avail. Resnick & Pella

ALFALFA

ALL NEW 94MPR 84VWAP, wetfoot, Erie Buy 5 - get one FREE Clover \$59.95 per 50 Climax Timothy \$29.95 per 50

OATS

Noble Porter Ogle Hercules

Baler Twine Fertilizer

WHOLESALE & RETAIL

NEED TO CUT THE FEED BILL?

NEW DAIRY BLEND COMPLETE AND CONCENTRATE FEEDS

COMPLETE FEEDS

CONCENTRATE FEEDS

#79516 Dairy Blend Flakes 16% All Natural \$169²⁵

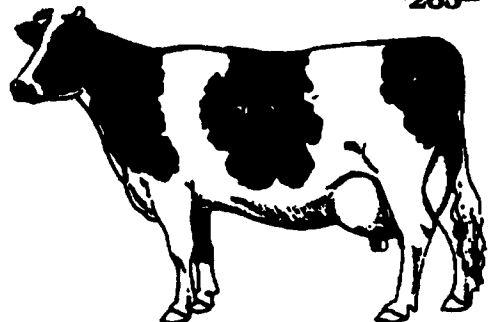
#51232 32% All Natural Protein Pellets \$232²⁵

#79518 Dairy Blend Flakes 18% All Natural \$178²⁵

#51238 38% All Natural Protein Pellets \$254²⁵

#79520 Dairy Blend Flakes 20% All Natural \$187²⁵

#50734 34% All Natural Protein Pellets w/Steam Flaked Soybeans \$265²⁵



Bulk Feed Available in 1 to 24 Ton Loads

Feed prices for Week of February 7 and Subject to Change Weekly with Grain Market Includes 8 ton volume discount and cash discount of 2 1/2% due 15th following month. Deduct additional \$3.00 per ton if paid in 10 days

pennfield feeds

HOOBER HOOBER EQUIPMENT, INC. Middletown, DE (302) 378-9555

C.B. HOOBER & SON, INC. Intercourse, PA (717) 768-8231

TWO LOCATIONS

The Saving Place

Battery Bonanza! FREE CAP OR CASH!

Get \$5.00 in cash back or a Limited-Edition Cap FREE... with every Sure-Starting MAGNA POWER™ Battery You Buy!

HURRY... OFFER EXPIRES MARCH 31ST!

WE SHIP PARTS DAILY Via FED. EXP. - UPS - PPSH - BUS - AIR FREIGHT, ETC.

HOURS Mon.-Fri. 7 AM-5 PM; Sat.: 7 AM-Noon

CALL US... It Could Be We Have It

Case Authorized UPS Station

YOU STAY PUT Pick Up Your Phone And Place Your Parts Order With Us