

Vermeer 605 & 604 "K" Series Balers

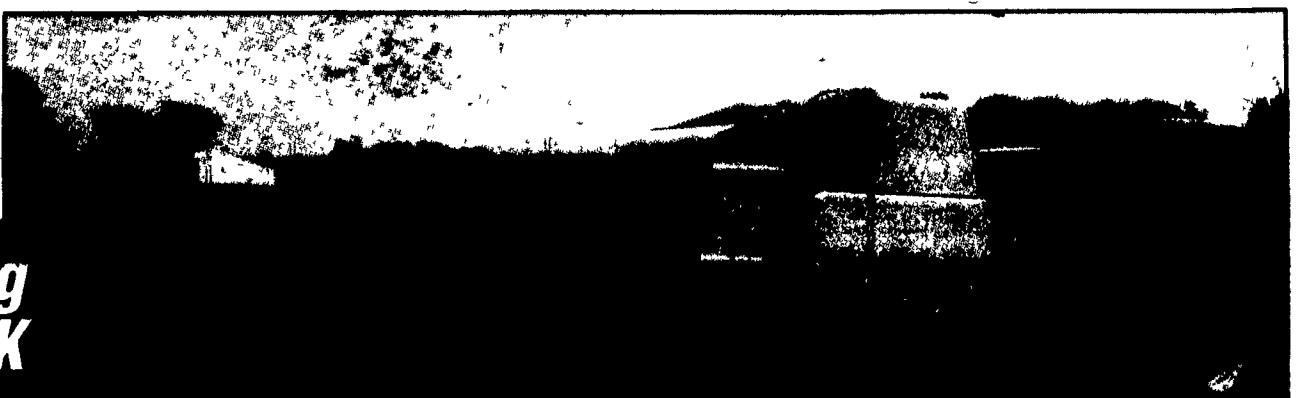
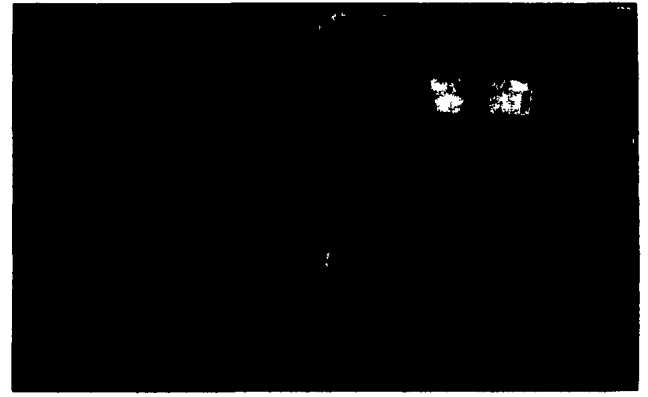
The New World Heavyweight Champions!

- **Higher-Density Bales! More Bales Per Hour!**
That's right! Up to 30% more density than the others means fewer bales to tie, less wrapping time. Plus, Vermeer's exclusive bottom drive roller design creates an extra packing point. Also works like a pinch roller to produce more feeding action, sometimes allowing you to operate a full gear faster.
- **Bales That Hold Their Shape And Feed Value!**
The more a bale breathes, the more it sags. And the more moisture it takes in from the ground. Combination pneumatic/hydraulic belt tension lets you pack them as tight as you want, from the core to the outside wrap.
- **Greater Range In Both Density And Bale Size!**
Vary bale diameters from 3 to 6 feet! Vary bale densities to fit your feeding and handling needs!
- **Clean, Streamlined Design With Wide Belts!**
Keep the leaves! Drop the traction belts! Vermeer's smooth, wide-belt design gives you more positive belt-to-bale contact (over 90%) ... and less leaf loss.
- **Smooth, Quiet-Operating Drive System!**
Heavy-duty double #60 drive chain! Constant velocity PTOs! Heavy-duty bearings! We challenge you to find a quieter operating baler!
- **Faster Unloading! Less Wear On The PTO!**
Drop 'n Go ejection system lets you empty the chamber and start a new bale without disengaging and re-engaging the PTO. Less time and wear on the PTO drive system.
- **Heavier, Better-Built Pickup! Less Plugging!**
No 4-bar pickup here! Heavier-built 5-bar pickups mean more feeding action. Rubber-mounted pickup teeth mean roughly 25% more spring in the tines.

5-Bar Pickup! Double Twine Tie! Hay Saver Wheels!
Variable Bale Size (3 to 6 Feet) & Density!
Wide-Belt Design! Over 90% Belt To Bale Contact!
Automatic Bale Monitoring
... for Faster Easier Baling & Better Looking Bales

- **Smoother, More Trouble-Free Twine-Tying!**
The new, improved double twine tie is simpler to adjust, easier to thread. And now you have six-ball storage and you're threading from both sides.

605 K 6-Foot Diameters, 5-Foot Widths



And Now Introducing ...The New Vermeer 604K

Smaller, compact 6 x 4 package. Easier to handle, feed and transport. Stacks two-wide on an 8-foot trailer.