

Announcing Our 10th Year Anniversary Customer Appreciation Days And Our Annual Open House

Feb. 14 thru Feb. 18 7:30 am to 5:00 pm

Register To Win Our 10th Year Anniversary

Giveaway! Grand Prize

1-White Walk-Behind Mulching Mower
Service Special

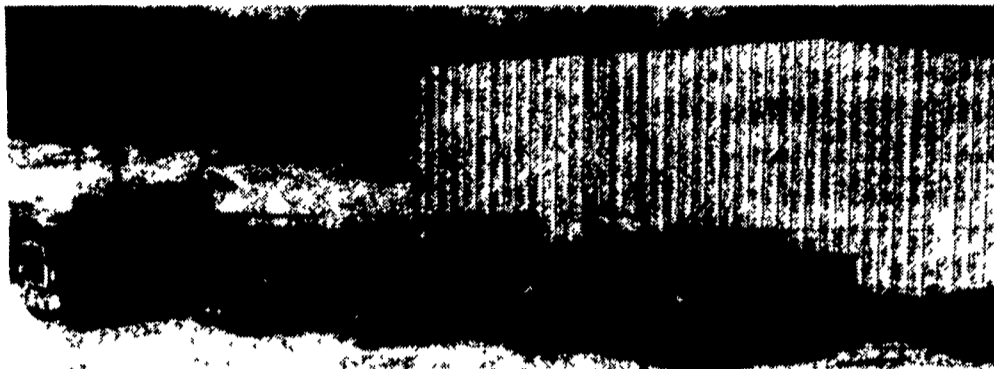
10% Discount On Parts Used For Repairs

- Free Dyno Test Upon Request.
- All Shop Specials To Be Paid Upon Delivery Unless Prior Arrangements Have Been Made
- Free Hauling With Purchase of \$500.00 Or More

We have tried to give the best service & support for the last 10 years & plan to continue this.

Due to increased demand on our parts & service dept. and also our Lawn & Garden Dept. We Have Expanded Our Dealership To Be More Efficient & Better Able To Serve You Our Customer.

We have relocated our showroom - parts and service offices. You are invited to attend & familiarize yourself with our new set up.



February 15, 1994

Door Prizes

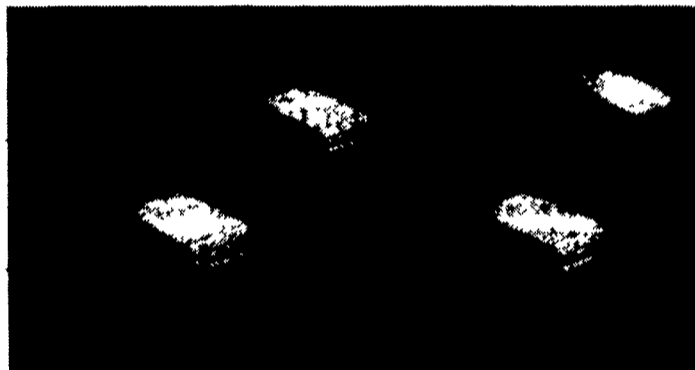
Refreshments

VIDEOS

Company Representatives Will Be Here To Help Answer Your Questions

It has been advertised in this paper - They Say "We Are Your Better Source For Oliver Tractor Parts" At G&D Farm Equipment Co., We Feel We Are Your BEST Source For Your Oliver-White Tractors & Farm Equipment Parts and Service

Call Us - Gives Us A Try!



Due to increased interest, we are expanding our Lawn & Garden Department. Stop by and see the full line of White Outdoor Products. Open House Specials! (Factory Trained Technicians)



Also Repairing Deere Tractors & Farm Equipment



"I've owned planters with air metering systems since 1976. What's nice about the White planter is that I just go to the field with it and know it'll work perfect. Over the years, I've had consistent performance.

"Another of the things I really like about my White planter is how simple it is to operate. All the settings are easy to make.

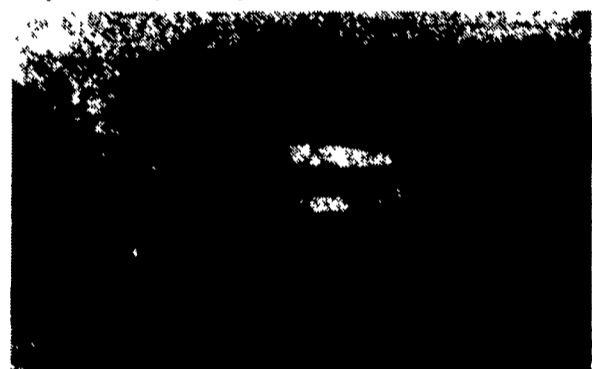
"I looked at the Cyclo but thought the air metering system resulted in poor spacing. I get better yield with the even seed placement of the White.

"I've also heard of problems with the accuracy on the Deere vacuum planters. Some of the guys I've talked to, who have Deere planters, figure their old ones were better. With a White there's no talc. No mess. The White is a better value for the money.

"The 16-row forward fold model we have now is uncomplicated to use when compared to the way other planters fold. It doesn't have wings or couplers to connect before planting. The White planter makes it easy to go from the road to the field. It just takes one minute to fold.

"All this...simple operation, easy-to-set settings and uncomplicated folding...gives me more time for the dairy operation. And the accuracy gives me better yields which improves cash flow."

—Allan & Neil Payne
Thamesford, Ontario
120 Dairy Cows
850 Acres Corn (Grain)
50 Acres Corn (Silage)
35 Acres Sweet Corn
275 Acres Soybeans
140 Acres Hay
40 Acres Pasture
60 Acres Wheat
50 Acres Mixed Grain

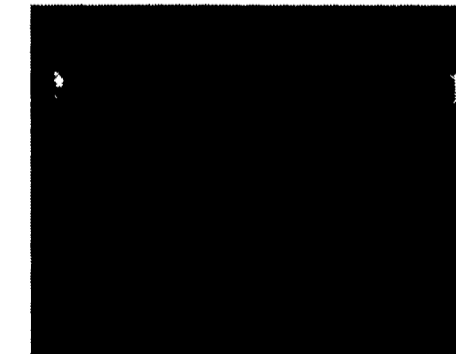


6145 - 140 PTO HP (104.5 kw)

AGCO-WHITE 6100 Series Tractors - Most Rugged Built Power Shift Tractor On The Market
6125-121 PTO HP ★ 6175-166 PTO HP
6145-140 PTO HP ★ 6195-192 PTO HP



Offering a Full Line of Cold & Hot Water Pressure Washers at Competitive Prices. The #1 Line Of Pressure Washers In The U.S.A.



6100 SERIES PLANTERS
Order Yours Now - Any Options
- Any Row Size - Pay By
March 5, 1994 & Receive
A Discount
April 5, 1994 & Receive A
Discount



FEB. 15, '94 7:00 PM to Approx. 8:30 PM

G+D Farm Equip. Co.

Sales Service Parts

Our business depends on your satisfaction

Offering Over 66 years combined mechanical experience to our customers

We Take Pride In Our Work

RD #5 1344 N. Penryn Rd. Manheim, PA 17545 717-664-2207

We Ship Parts Daily By U.P.S.

Factory Trained Technicians