

## Valley Stockyards

Athens, Pa.

Monday, February 7, 1994

Report supplied by auction

HOLSTEIN HEIFER CALVES TO 175.00.

VEAL CALVES 70.00-85.00.

VEALER BULL CALVES 90.00-157.50.

SLAUGHTER CALVES 50.00 AND DOWN.

GRASSERS & FEEDERS 45.00-82.00.

LAMBS 56.00-80.00.

SHEEP 30.00-47.00.

HOGS 200-250 TO 43.00.

SOWS 34.00-38.00.

BOARS TO 31.00.

PIGS EACH 5.00-26.00.

HEIFERS 47.00-58.50.

STEERS 52.50-56.50.

FEEDER STEERS 66.00-85.00.

BULLS 46.75-55.00.

GOOD COWS 42.00-49.00.

COWS MEDIUM 36.00-41.50.

COWS POOR OR SMALL 35.00 AND DOWN.

CATTLE MARKET STEADY.

CALF MARKET STEADY.

HORSES, NONE.

PONIES, NONE.

GOATS TO 82.50.

DAIRY SALE FEB. 17 AT 1:30.

## Keister's

## Middleburg Auction

Middleburg, Pa.

Tuesday, February 8, 1994

Report Supplied by PDA

CATTLE 166. Supplied by the auction. STEERS: few Choice 70.00-72.00, Select 67.00-69.50. HOLSTEINS: Choice 62.00-65.75, Select 58.00-62.00. HEIF-

ERS: Choice 68.00-70.00. COWS: Breaking Utility and Commercial 48.00-52.75, Cutter and Boning Utility 46.00-51.75, Canner and Low Cutter 42.00-45.75. Shells 38.00-42.00. BULLOCKS: few Select 60.00-62.75. BULLS: few Yield Grade No. 1 & 2 53.50-63.75. FEEDER CATTLE: Steers: 68.00-78.50.

CALVES 130. VEALERS: Standard and Good 60/100 lbs. 40.00-65.00. RETURNED TO FARM: No. 1 Holstein bulls 95/120 lbs. 120.00-160.00, No. 2 80/90 lbs. 110.00-155.00.

HOGS 450. (2/07 & 2/08/94). Bulk of supply sold on Monday and reported by auction. BARROWS AND GILTS: US No. 1 230/250 lbs. 49.00-51.25, US 1-2 220/250 lbs. 46.50-48.75, US 1-3 220/260 lbs. 45.00-46.50, US 2-3 200/295 lbs. 42.00-44.75, few Thin 34.00-40.00. SOWS: US 1-3 350/630 lbs. 35.00-38.50, few 41.00, 300/575 lbs. 28.00-34.50. BOARS: 220/595 lbs. 28.00-31.75, very thin lightweights 200/370 lbs. 20.00-28.00.

FEEDER PIGS 92. US 1-3 25/50 lbs. 15.00-24.00. --- per head.

SHEEP 21. High Choice and Prime 30/45 lbs. Spring lambs 130.00-157.50, Good and Choice 60/75 lbs. Woolled sl. lambs 65.00-73.00. Slaughter sheep: 20.00-31.00.

GOATS 0...No market test.

## Frederick Livestock

## Auction

Frederick, Md.

February 7, 1994

Report Supplied by Auction

SLAUGHTER COWS: ACTIVE BIDDING! UTILITY 46.50-51.00; HIGH DRESSING 51.00-52.75, 1 AT 56.00; CANNERS 43.00-46.00; SHELLY 42.00 DOWN.

BULLS: YG#2 1600-1700 LBS. 57.00-60.50.

FED STEERS: NO CHOICE OFFERED; 1 SELECT HOLSTEIN 1255 LBS. AT 60.50.

VEAL CALVES: ALL UNDER 140 LBS. CHOICE, NONE OFFERED; CULLS 85-110 LBS. 45.00-52.00, FEW TO 55.00; 50-80 LBS. 35.00-45.00; WEAK/ROUGH/THIN 35.00 DOWN.

FARM CALVES: HOLSTEIN BULLS 5.00-10.00 HIGHER. #1 95-120 LB. BULLS 125.00-143.00, FEW LATE TO 150.00; 90 LBS. 80.00-105.00; 80-85 LBS. 60.00-80.00.

HOLSTEIN HEIFERS: STRONG DEMAND! #1 90-120 LBS. 150.00-170.00; 80-85 LBS. 95.00-140.00; BEEF X BULLS AND HEIFERS 80-110 LBS. 75.00-110.00.

BUTCHER HOGS: 86 HEAD, STEADY PRICES. US#1&2 230-265 LBS. TO 46.25; 215-260 LBS. #1&3 44.50-45.75; 260-280 LBS. 43.00-44.00; 285-310 LBS. 6 HEAD 44.00-45.00; 195-215 LBS. 40.50-43.50.

SOWS: FEW 400-650 LBS. 38.00-41.00.

BOARS: 350-600 LBS. TO 31.25; 1240 LB. AT 32.25.

STOCK CATTLE: STEERS FEW HOL X 500-700 LBS. 54.00-63.00.

HEIFERS: 300-500 LBS. 66.00-74.00; 600-800 LBS. 58.00-66.00.

LAMBS: CHOICE 90-100 LBS. 64.00-68.00; NEW CROP 50-65 LBS. 81.00-94.00; FEW 25-40 LBS. TO 99.00.

SHEEP: 130-225 LBS. 20.00-29.00.

GOATS: LARGE 55.00-64.00; MEDIUM 35.00-50.00.

PIGS AND SHOATS: FEW OFFERED.

## Mercer

## Livestock Auction

Mercer, Pa.

Tuesday, February 8, 1994

Report Supplied by Auction

Lancaster Farming, Saturday, February 12, 1994-A19

## Estimated Daily Livestock Slaughter

Under Federal Inspection

February 9, 1994

|                     | CATTLE  | CALVES | HOGS      | SHEEP  |
|---------------------|---------|--------|-----------|--------|
| WEDNESDAY (EST)     | 122,000 | 5,000  | 361,000   | 20,000 |
| WEEK AGO (EST)      | 124,000 | 4,000  | 361,000   | 20,000 |
| YEAR AGO (EST)      | 102,000 | 6,000  | 369,000   | 21,000 |
| WEEK TO DATE (EST)  | 368,000 | 15,000 | 1,070,000 | 63,000 |
| SAME PD LT WK (EST) | 359,000 | 14,000 | 1,065,000 | 57,000 |
| SAME PD LT YR (ACT) | 334,000 | 18,000 | 1,100,000 | 59,000 |

PREVIOUS DAY ESTIMATED TUESDAY STEER AND HEIFER 93,000, COW AND BULL 28,000.

\*\*\*REVISION TUESDAY SHEEP SLAUGHTER...21,000.

CATTLE 182. Supplied by the auction. STEERS: High Choice and Prime 68.00-70.50, one at 71.10, Choice 66.00-69.50, Select 62.00-66.75. HOLSTEINS: Select and Choice 55.00-63.00. HEIFERS: Choice 65.25-70.00, Select 57.00-64.00. COWS: Breaking Utility and Commercial 44.00-46.75, Cutter and Bon Utility 43.00-49.00, Canner and Low Cutter 41.00-47.25. Shells 28.00-34.00. BULLOCKS: Choice 64.00-68.00, Select 57.00-62.00. BULLS: Yield Grade No. 1 59.50-64.00.

CALVES 80. VEALERS: Choice 180/240 lbs. 75.00-95.00, Good 80/140 lbs. 65.00-85.00, Standard and Good 50/90 lbs. 40.00-60.00. RETURNED TO FARM: No. 1 Holstein bulls 100/105 lbs. 140.00-150.00, No. 2 90/125 lbs. 100.00-135.00; No. 1 Holstein heifers 95/105 lbs. 105.00-190.00. One Beef cross bull 100 lbs. 95.00.

HOGS 111. BARROWS AND GILTS: US No. 1-2 230/250 lbs. 45.75-47.10, US 1-3 220/240 lbs. 44.00-46.25. SOWS: US

1-3 300/550 lbs. 32.00-38.00. BOARS: 26.00-29.00.

FEEDER PIGS 0...No market test.

SHEEP 0...No market test.

GOATS 0...No market test.

## Shenandoah

## Valley

## Livestock

Harrisonburg, Va.

February 5, 1994

Report supplied by auction

STEERS: M&L-1 300-500 LBS. 95.50-105.50; 500-700 LBS. 79.50-89.00; 700-1000 LBS. 68.25-76.75; HOLSTEIN 300-1000 LBS. 54.50-80.00.

S-L & M&L-2: 300-500 LBS. 82.00-89.00; 500-700 LBS. 75.00-85.00.

FEEDER BULLS: 300-500 LBS. 76.50-86.00; 500-700 LBS. 73.00-77.50.

S-L & M&L-2: 300-500 LBS. 73.00-74.00.

HEIFERS: 300-500 LBS. 73.00-85.00; 500-700 LBS. 65.00-73.00.

S-L & M&L-2: 300-500 LBS. 63.50-78.00; 500-700 LBS. 62.00-66.00.

STOCK COWS: BEEF WITH CALVES 590.00-710.00 PER PAIR; BEEF MEDIUM FRAME 475.00-510.00, SMALL FRAME 350.00-400.00 PER HEAD; BABY CALVES 55.00-115.00.

SLAUGHTER COWS: UTILITY AND COMMERCIAL 2-4 43.00-49.00; CANNER AND CUTTERS 1-3 39.00-45.00.

SLAUGHTER BULLS 53.00-60.00

## Special Sale

## Work and Driving Horses

New Holland Sales Stables

New Holland, PA

Friday, February 4, 1994

Report Supplied by Auction

353 HEAD.

WORK HORSES, KENTUCKY, PAIRS 1975.00-3800.00, SINGLES 875.00-1625.00; VIRGINIA, PAIRS 2700.00-3100.00, SINGLES 875.00-1400.00; KENTUCKY, PAIRS 2350.00-3150.00, SINGLES 850.00-1350.00; ILLINOIS, SINGLES 875.00-1300.00; TENNESSEE, PAIRS 2600.00-3800.00, SINGLES 1150.00-1850.00; VIRGINIA, PAIRS 1375.00-2500.00, SINGLES 875.00-1700.00.

MULES, KENTUCKY, PAIRS 3350.00-5400.00, SINGLES 1900.00-2550.00; TENNESSEE, PAIRS 2200.00-6150.00.

DRIVING HORSES, ALL SINGLES, NEW JERSEY 750.00-1700.00; NEW YORK 725.00-1125.00; OHIO 650.00-1225.00.

LOCAL DRIVING 825.00-1500.00, LOCAL WORK, PAIRS 1725.00-1950.00, SINGLES 810.00-1475.00; MULES, SINGLES 925.00-1400.00.

## See Your White-New Idea Dealer Listed Below.

### NEW JERSEY

#### Bridgeton

Leslie G. Fogg Inc

#### Columbus

Reed Brothers Equipment

#### Shiloh

Farm Rite Inc.

### PENNSYLVANIA

#### Airville

Farmers Equip & Supply

#### Bechtelsville

Miller Equipment

#### Belleville

Ivan J Zook & Sons

#### Bethel

Zimmerman Farm Service

#### Bloomsburg

William F. Welliver

#### Chambersburg

Chambersbrg Farm Service

#### Cochranville

Stoltzfus Farm Service

#### Dover

George N Gross Inc

#### Everett

Sollenbergers Equipment

#### Gettysburg

Yingling's Implement

#### Honesdale

Marshall Machinery

#### Klingerstown

Stanleys Farm Service

#### Lebanon

Umbergers Of Fontana

#### Mahaffey

Hutton Farm Equipment

#### Mercer

Ralph W Kyle Inc.

#### Oakland Mills

Peoples Sales And Service

#### Quakertown

C. J. Wonsidler Bros

#### Quarryville

A L Herr & Brother

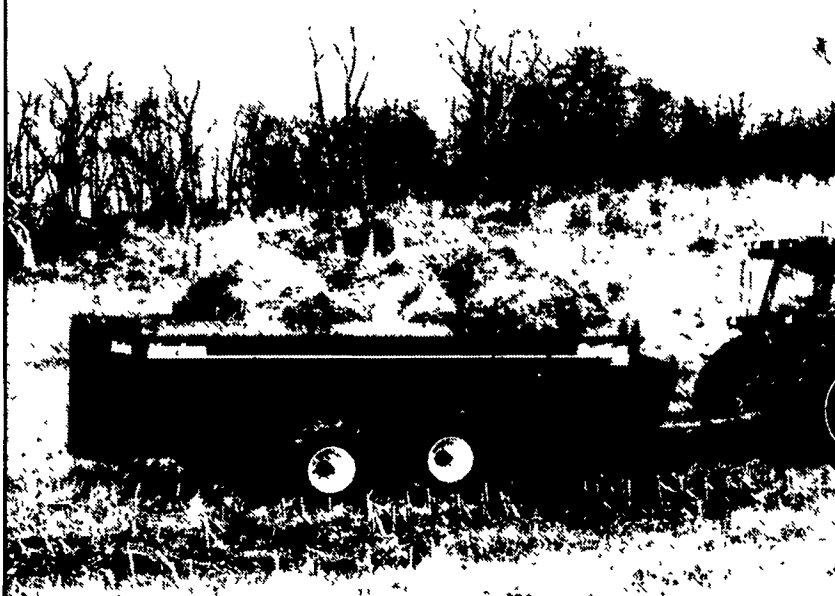
#### Somerset

Lincoln Supply & Equipment

#### Tunkhannock

Ace Jurista

# Tough Shredder



## SideKick spreaders power through even the toughest manure.

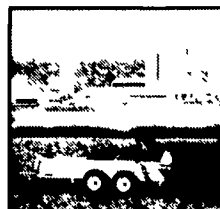
With a new SideKick 3200 series side-delivery spreader, you'll power through tough manure when others shudder.

The planetary drive system and twin augers power through all types of manure from slurry to heavy pen pack to dry feedlot to gritty poultry litter

The unique vertical expellers shred manure for a fine application. And the hydraulic expeller door

makes the rate easy to control, too

New Idea 3600 series box spreaders have earned a reputation for a long life and an exceptional spread pattern

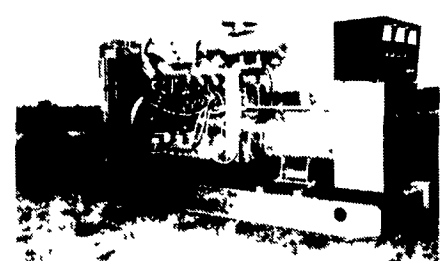


See your dealer or call  
1-800-767-3221 for information.

## NEW IDEA® SPREADERS



**A LESSON  
WELL  
LEARNED...  
LANCASTER  
FARMING'S  
CLASSIFIED  
ADS  
GET RESULTS!**



## GENERATORS

**Sales ★ Service ★ Rentals**  
\* Complete Generator Systems  
\* PTO \* Portables \* 2-1600 KW  
"We Service It If You Have It  
And Sell It If You Need It"

34 W. Mohler Church Rd.  
Ephrata, PA 17522

Tel: 717-738-0300  
Fax: 717-738-4329