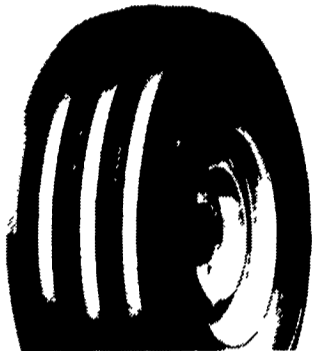


# SPRING FARM TIRE VALUES!



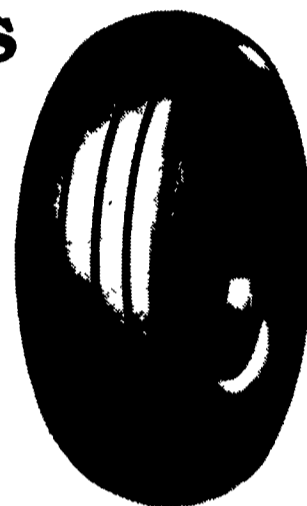
## FRONT TRACTOR TIRES 4 RIB

Size	Ply	Price
95L15	8 Ply TT	80 <sup>00</sup>
11L15	8 Ply TT	99 <sup>00</sup>
750-16	6 Ply TT	70 <sup>00</sup>
1000-16	8 Ply TT	95 <sup>00</sup>
1100-16	8 Ply TT	118 <sup>00</sup>



## FARM UTILITY WAGON TIRES

Size	Ply	Price
95L14	8 Ply TT	55 <sup>00</sup>
750-16	6 Ply TT	50 <sup>00</sup>
850-16	6 Ply TT	52 <sup>00</sup>
11L15	8 Ply TT	58 <sup>00</sup>
12.5L15	8 Ply TT	69 <sup>00</sup>



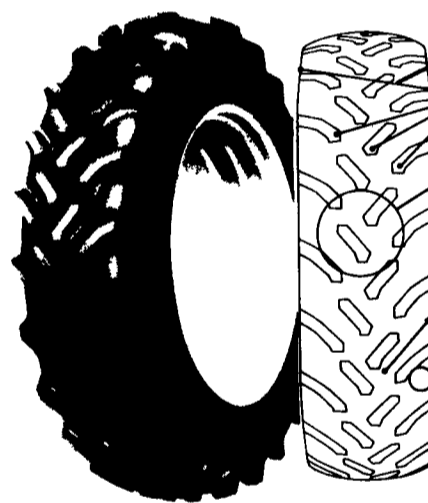
## TRACTION TORQUE TT Pulls With Authority, Economy Priced

- Deep, wide lugs for positive pulling power
- Famous Zig-Zag lug design resists foldover, provides more biting edges than straight lugs
- Lugs are buttressed to get wider and stronger as they wear



Size	Ply	Price
14.9-28	6 Ply	228 <sup>00</sup>
16.9-30	6 Ply	258 <sup>00</sup>
18.4-30	6 Ply	333 <sup>00</sup>
18.4-34	6 Ply	354 <sup>00</sup>
18.4-38	6 Ply	403 <sup>00</sup>
18.4-38	8 Ply	428 <sup>00</sup>

## DT 710 RADIAL REAR



- Features**
- Patented interlocking lug design
  - Multiple lug pattern offers 60% increase in traction edges
  - High center contact area for excellent ride and handling
  - New bead area shape for low pressure/tubeless operation
  - Unobstructed soil discharge
  - Open shoulder area for wet soil mobility and self-cleaning
  - Second generation natural tire shape for low pressure performance, fuel efficiency, and high-speed roading capability.

18.4R38 ★ 490<sup>00</sup>

## DYNA TORQUE II TT

The Hard Working Hard-Pulling Tractor Rear

Size	Ply	Price
11.2-28	4 Ply	180 <sup>00</sup>
12.4-28	4 Ply	190 <sup>00</sup>
13.6-28	4 Ply	199 <sup>00</sup>
15.5-38	6 Ply	275 <sup>00</sup>
18.4-34	6 Ply	390 <sup>00</sup>
18.4-38	8 Ply	440 <sup>00</sup>
20.838	8 Ply	555 <sup>00</sup>



## DYNA TORQUE RADIALS

- Revolutionary 3-lug per pitch design improves traction and ride.
- Computer designed "natural" shape casing improves tire body life
- Radial Construction Provides Better Traction, Lower Fuel And Overall Costs

Size	Ply	Price
11.2-28	4 Ply	180 <sup>00</sup>
12.4-28	4 Ply	190 <sup>00</sup>
13.6-28	4 Ply	199 <sup>00</sup>
15.5-38	6 Ply	275 <sup>00</sup>
18.4-34	6 Ply	390 <sup>00</sup>
18.4-38	8 Ply	440 <sup>00</sup>
20.838	8 Ply	555 <sup>00</sup>



<b>Horlacher &amp; Sherwood</b> 153 E. Tioga Tunkhannock, PA 717-836-1116	<b>Dices Tire Shop</b> 1421 Lincoln Way Chambersburg, PA 717-264-9312	<b>Bastian Tire Sales</b> Rt. 11 & 15 Shamokin Dam, PA 717-743-1571	<b>Lebanon Valley Imp. Co.</b> 700 E. Linden St. Richland, PA 717-866-7518	<b>BHM Farm Equipment</b> RD 1 Rt. 934 North Annville, PA 717-867-2211
<b>Goodyear Auto Service Center</b> 260 W. Hamilton Ave. State College, PA 814-238-4955	<b>Zimmerman Farm Service</b> School Rd Bethel, PA 717-933-4114			<b>Commercial Tire &amp; Service Center</b> 915 Baltimore Blvd. Westminster, MD 21157 410-876-9946 410-848-2080
<b>Shueys Sales &amp; Service</b> Jonestown Road Ono, PA 717-865-4915				

THE BEST TIRES IN THE WORLD HAVE GOODYEAR WRITTEN ALL OVER THEM