

HOGS TOTAL HEAD COUNT 27 US 1-3
200-250 LBS 40.00-42.00 US 2-4 250-300
LBS 39.50-41.00 SOWS US 1-3 300-500
LBS 34.00-42.00 FEW 25.00-500 LBS &
OVER 33.00-40.00 FEEDER CATTLE
TOTAL HEAD COUNT FOR ALL
WEIGHTS 2905 HEAD STEERS:
MEDIUM 1 200-300 95.00-99.00 FEW
123.00 300-400 88.00-108.00 400-500
86.00-101.00 FEW 108.00 500-600
80.00-91.50 600-700 77.00-83.50 700-800
75.00-79.25 800-900 75.00 HEIFERS:
MEDIUM 1 200-300 89.00-103.00
300-400 77.00-90.00 400-500 71.00-86.00
500-600 70.00-80.00 600-700
72.00-76.00.

70.50-72.50 500-600 73.50-76.00.
BULLS 37 HEAD MED&LARGE 1
SMALL 1 300-400 108.50 76.00-92.00
400-500 90.00 72.50-83.00 COWS
RETURNED TO FARMS 9 HEAD - M-1,
4-8 YRS OLD 950-1100 LBS
\$41.00-44.00 PER CWT. M-2, 4-8 YRS
OLD 850-950 LBS \$31.00-45.00 PER
CWT. BABY CALVES RETURNED TO
FARMS 41 HEAD NEWBORN TO 4
WEEKS OLD \$25.00-87.50 PER HEAD.
OVER 100 LBS \$100.00-107.50 PER
CWT.

ORANGE, VIRGINIA ON FEBRU-
ARY 2, 1994 PRICES BASED ON IN
WEIGHTS.
SLAUGHTER CATTLE 118 HEAD
SLAUGHTER COWS 110 HEAD COWS
BREAKING UTILITY & COMMERCIAL
2-4 42.75-46.75 CUTTER & BON-
ING UTILITY 1-3 38.00-45.00 HIGH
DRESSING 44.50-48.00 CANNER AND
LOW CUTTER 1-2 37.00-41.75.
SLAUGHTER BULLS 8 HEAD
BULLS Y.G. 1-2, 900-1300 LB. 61.00
Y.G. 1-2, 1300-1600 LB. 54.00-56.75
Y.G. 1-2, 1600 LBS. & OVER
59.50-61.75.
FEEDER CATTLE 323 HEAD.
STEERS 105 HEAD MEDIUM 1
LARGE 1 SMALL 1 300-400
94.50-110.00 --- 76.00-81.50 400-500
85.50-95.00 79.50 74.00-83.50 500-600
77.00-83.50 --- 75.00 600-700
77.00-79.50 --- HEIFERS 140 HEAD
MEDIUM 1 LARGE 1 SMALL 1 MED-
&LARGE 2 300-400 84.50-86.00
80.00-86.00 72.00-78.00 --- 400-500
76.00-81.50 81.75 68.00-72.00 75.00
500-600 78.50 75.00-80.00 ---
68.00-76.00 600-700 70.00 73.50-77.00
60.00 --- 700-800 --- 65.50 ---
BULLS 78 HEAD MEDIUM 1 LARGE 1

Virginia Weekly

Richmond, Va.
Wednesday, February 2, 1994
WEEKLY REVIEW IN VIRGINIA:
REVIEW OF VIRGINIA DIRECT HOGS
FOR THE PERIOD JAN. 26 THRU FEB.
1, 1994. RECEIPTS FOR COUNTRY
BUYING STATIONS IN VIRGINIA FOR
THE PERIOD TOTALED 923 HEAD.
RECEIPTS FOR DELIVERY TO THE
PLANT (WITHIN A 30 MILE RADIUS)
TOTALED 1664 HEAD. THE VIRGINIA
DIRECT HOG MARKET FOR TUES-
DAY, FEBRUARY 1, 1994 CLOSED
\$1.50-2.00 HIGHER COMPARED TO
LAST TUESDAY'S TRADING.
BARROWS AND GILTS: VIRGINIA
COUNTRY POINTS U.S. 1-3 220-250
LBS 44.50-46.00 LOCAL PLANT
DELIVERED (30 MILE RADIUS) US 1-2
220-250 LBS. 43.50-44.50 FEW 46.00 US
2-3 220-250 LBS. 42.50-43.50 SLAUGH-
TER STEERS AND HEIFERS 0%;
SLAUGHTER COWS 28% SLAUGH-
TER BULLS 2%, SLAUGHTER
CALVES AND VEALERS 0%; FEEDER
CATTLE UNDER 600 LBS 57%, OVER

600 LBS 13% PRICE RANGES FOR
VIRGINIA WEEKLY AUCTIONS
SLAUGHTER CATTLE: TOTAL HEAD
COUNT 5 HEAD STEERS: SELECT 2-3
1000-1200 LBS ---- SELECT 2-3 1200
LBS & OVER ---- HEIFERS: SELECT
2-3 1100-1300 LBS ---- STANDARD 1-2
850-1100 LBS 46.00-49.25 SLAUGHTER
COWS TOTAL HEAD COUNT 1169
HEAD UTILITY & COMMERCIAL
COWS 37.25-51.50 SLAUGHTER
BULLS: HEAD COUNT 91 HEAD
BULLS - 1-2 900-1300 LBS 51.50-56.00
1-2 1300-1600 LBS 51.00-63.50 1-2 1600
LBS & OVER 50.50-63.50 SLAUGHTER
CALVES & VEALERS TOTAL HEAD
COUNT 12 HEAD CALVES - GOOD
AND CHOICE 250-500 LBS 69.00-73.00
VEALERS - GOOD AND CHOICE
200-350 LBS ---- SLAUGHTER LAMBS
TOTAL HEAD COUNT 559 HEAD NEW
CROP CHOICE & FEW PRIME 1-2 FEW
3 85-125 LB 65.25-79.25 GOOD & FEW
CHOICE 1-2 85-90 LBS 79.00 (OLD
CROP) WOOLED CHOICE & FEW
PRIME 1-2 FEW 3 100-120 LB
62.00-71.50 GOOD & FEW CHOICE 1-2
85-100 LB. 62.00-74.50 SLAUGHTER

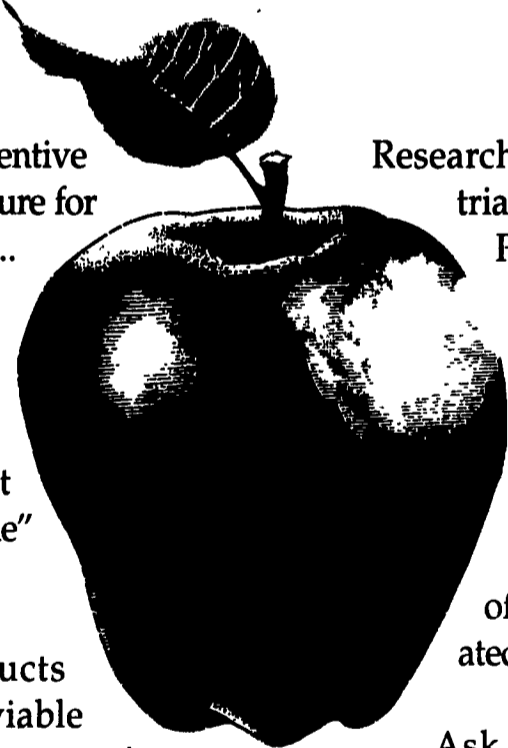
North Virginia

Southside (Blackstone), Va.
Wednesday, February 2, 1994
PRICES BASED ON IN WEIGHTS
SLAUGHTER CATTLE 71 HEAD
SLAUGHTER COWS 66 HEAD COWS
BREAKING UTILITY & COMMERCIAL
2-4 41.00-45.00 HIGH DRESSING
43.00-48.00 CUTTER & BONING UTI-
LITY 1-3 40.00-44.00 HIGH DRESSING
42.00-45.00 CANNER AND LOW CUT-
TER 1-2 39.50-41.00.
SLAUGHTER BULLS 5 HEAD
BULLS Y.G. 1-2, 1600 LBS. & OVER
56.50-57.75.
FEEDER CATTLE 189 HEAD.
STEERS 64 HEAD MED&LARGE 1
MED&LARGE 2 300-400 88.00-100.00
--- 400-500 86.00-92.00 --- 500-600
88.00-92.00 84.00 600-700 70.00-77.00
73.50 800-900 70.00-71.50 ---- HOLS-
TEIN STEERS; 5 HEAD MED&LARGE
1-2 800-900 57.00 900-1000 52.50
HEIFERS 83 HEAD MED&LARGE 1
SMALL 1 MED&LARGE 2 300-400
72.50-80.00 65.00-70.00 73.50-75.00
400-500 75.00-79.00 70.00-72.00

Valley Stockyards

Athens, Pa.
Monday, January 31, 1994
Report supplied by auction
HOLSTEIN HEIFER CALVES
115.00-160.00.
VEAL CALVES 48.00-70.00.
VEALER BULL CALVES
95.00-145.00.
SLAUGHTER CALVES 55.00 AND
DOWN.
GRASSERS & FEEDERS 42.00-80.00.
LAMBS 50.00-77.00.
SHEEP 24.00-42.00.
HOGS 200-250 36.00-39.00.
SOWS 30.00-35.00.
BOARS 26.00-32.00.
PIGS 5.00-31.00.
HEIFERS TO 46.00.
STEERS TO 61.00.
FEEDER STEERS 60.00-80.00.
BULLS 51.00-58.00.
GOOD COWS 42.00-47.95, TOP 51.00.
COWS MEDIUM 36.00-41.00.
COWS POOR OR SMALL 35.00 AND
DOWN.
CATTLE MARKET EASIER.
CALF MARKET EASIER.
HORSES, NONE.
PONIES TO 175.00.
GOATS 25.00-82.50.

Think of it as
"an apple a day"
for cows and calves



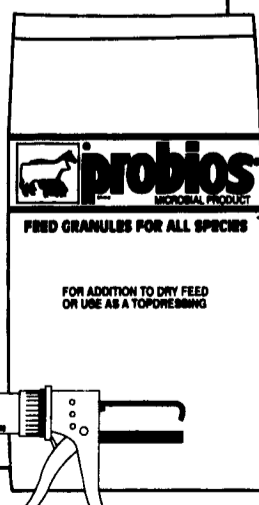
Experts say "preventive
medicine" IS the future for
the dairy industry...
and dairymen across
the country say the
line of PROBIOS[®]
brand Microbial
Products is the best
"preventive medicine"
of today.

Research and performance
trials have shown that
PROBIOS Microbial
Products may:

- ◆ Stimulate ap-
petite in freshening
COWS
- ◆ Reduce incidence
of scours and associ-
ated treatment costs

PROBIOS Products
contain selected, viable
cultures of naturally-occurring
lactic acid-producing bacteria...
micro-organisms known for their
beneficial activity in the digestive
tract of animals. These bacteria
are essential for proper digestive
tract function and lead to better
performance.

Ask about
PROBIOS Products
and start a prevention
program for pennies
a day.



For more information call
800-247-6782



©, SM, TM Trademarks and service marks, registered or applied for, of Pioneer Hi-Bred International, Inc. All sales are subject to the terms of labeling and sale documents © 1993 PHII

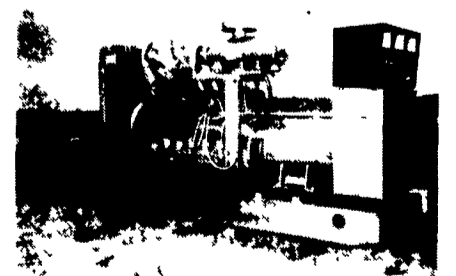
Breathe Clean, Cool Powered Air



Combined respira-
tory, head, eye and
face protection
creates a personal
mini-environment of
clean air for you to
work. You can do
more work in less
time because you
take fewer breaks.
By increasing
productivity you
increase profit - not to mention comfort!

- Use it for:
- Ragweed and other
pollens in field mowing
 - Making hay - especially
round bales
 - Combining
 - Handling poultry
 - Cleaning chicken
houses
- Similar products available to protect you in your
orchard spraying and to control odor problems.

Call 1-800-234-7417 for more information
S.E.I. ENVIRONMENTAL SUPPLY
21515 Peachtree Road, PO Box 368, Barnesville, MD 20838
301-872-7417 • FAX 301-816-3517 • Toll Free 1-800-234-7417
VISA/Mastercard Accepted



GENERATORS

Sales ★ Service ★ Rentals
* Complete Generator Systems
* PTO * Portables * 2-1600 KW
"We Service It If You Have It
And Sell It If You Need It"
34 W. Mohler Church Rd.
Ephrata, PA 17522
Tel: 717-738-0300
Fax: 717-738-4329