

Eastern PA & NJ Poultry Report

Atlanta, Ga.

Tuesday, February 1, 1994

Trading was too few to report on either class of spent fowl. Offerings for this week's slaughter were short to about adequate for desired processing needs. Demand moderate as supplies of live birds are more available for next week's requirements. Undertone generally steady.

LIGHT TYPE HENS CENTS PER LB., DAY OF NEGOTIATION, GENERALLY FOR SLAUGHTER WITHIN THE NEXT 10 DAYS RANGE MAJORITY AT FARM BUYER LOADING TOO FEW TO REPORT FOB PLANT TOO FEW TO REPORT HEAVY TYPE HENS (7 POUNDS AND UP) * PRELIMINARY PRICE, CENTS PER LB., GENERALLY FOR SLAUGHTER THE WEEK OF 07-FEB-94 RANGE MAJORITY AT FARM BUYER LOADING TOO FEW TO REPORT * WEIGHTS UNDER 7 LBS. SUBJECT TO DISCOUNT.

New York Egg Market

Wednesday, February 2, 1994

Prices were higher. Trade sentiment continued to be fully steady to firm. Demand was moderate to good. Supplies were barely adequate to adequate, and maintained with confidence.

PRICES TO RETAILERS, SALES TO VOLUME BUYERS, USDA GRADE A AND GRADE A, WHITE EGGS IN CARTONS, DELIVERED STORE DOOR, CENTS PER DOZEN. RANGE EXTRA LARGE 71-73 LARGE 68-71 MEDIUM 65-68.

Heinsey's Poultry

Roots, East Petersburg

Tuesday, February 1, 1994

PRICES PAID PER POUND, EXCEPT AS NOTED RANGE:

Muscovy Ducks - Drakes .90 - 1.10.
Muscovy Ducks - Hens .90 - .98.
Pekin Ducks .50 - .64.
Red Fowl 4-4.5 .40 - .62, Red Fowl 5-6 .50 - .88.
Crossbred Fowl 5-6 .40 - .74.
Crossbred Roosters 4-6 .40 - .88,
Crossbred Roosters 7-11 .40 - .92.
Guinea Fowl .50 - .95.
Banty Roosters 2.50 - 5.00 ea.
Banty Hens 1.25 - 2.50 ea.
Leghorn Hens .19 - .24.
Silkies 3.50 - 5.00 ea.
Pigeons 2.00 - 2.65 ea.
White Pigeons 3.25 - 4.10 ea.
Rabbits 4-6 1.10 - 1.42, Rabbits 7-11 .90 - 1.22.
Bunnies 1.00 - 3.50 ea.
Guinea Pigs 2.00 - 4.50 ea.
Doves 2.00 - 3.50.
Chukars 4.00 - 4.40 ea.
Total Coops Sold 582.

New England Shell Eggs

Wednesday, February 2, 1994

NEW ENGLAND: Cartoned egg prices were unchanged to higher on all sizes. y steady to firm. Demand was moderately good in most areas, as the bitter cold temperatures were causing consumers to buy more eggs. Supplies were generally sufficient to meet current needs.

PRICES PAID TO PRODUCERS, CASES EXCHANGED, GRADE YIELD BASIS, BROWN EGGS LOOSE, AT FARM, CENTS PER DOZEN RANGE JUMBO .76-.79, EXTRA LARGE .73-.76,

LARGE .69-.72, MEDIUM .50-.53, SMALL .24-.27.

BOSTON: PRICES TO RETAILERS, SALES TO VOLUME BUYERS, USDA GRADE A AND GRADE A, BROWN EGGS IN CARTONS, DELIVERED STORE DOOR, CENTS PER DOZEN RANGE EXTRA LARGE .88-.92, LARGE .85-.89, SMALL .66-.71.

Delmarva

Broiler/Fryer Market

Wednesday, February 2, 1994

Movement of ready-to-cook whole birds continued moderate to good. Seller offerings varied from fully adequate to instances closely cleared. Live supplies were moderate. Weights were mixed in a full range. Processing schedules were very heavy. Less than trucklot asking prices were generally unchanged at 52 to 64 cents. Trade sentiment was mostly steady to weak. In the parts complex, leg quarters continued to clear to an active demand. Boneless skinless breasts were readily available and difficult to place. Other parts were adequate and in fairly good balance.

ESTIMATED SLAUGHTER OF BROILER/FRYERS IN DELMARVA (000)

ESTIMATED ACTUAL AVG. WEIGHT ACTUAL AVG. WEIGHT 02/02 01/31 01/31 01/26 01/24 2,387 2,251 4.76 2.275 4.79.

*BROILER/FRYER CURRENT NEGOTIATED PRICES FOR IMMEDIATE DELIVERY INCLUDES MOSTLY MULTIPLE-DROP SHIPMENTS OF BRANDED AND WING TAGGED TO NEW YORK CITY FROM DELMARVA BRANDED U.S. GRADE A RANGE 49-64 WEIGHTED AVERAGE 53.19.

National Egg Market

Wednesday, February 2, 1994

NATIONAL EGG MARKET - AT A GLANCE: Prices were unchanged to higher in the Northeast and Midwest, and unchanged elsewhere. The market tone was fully steady to firm. Demand was fair to good, best into retail channels. Supplies were barely adequate to adequate, and extra eggs were held or offered with confidence. Breaking stock supplies were held with confidence, and buyers paid higher prices to secure needed shell eggs. Live hen markets were about steady, and offerings were mixed, but generally at least adequate for the light to moderate demand.

Hackettstown Poultry & Egg

Hackettstown, N.J.

Report Supplied by Auction Tuesday, February 1, 1994

Report Supplied by Auction

HEAVY FOWL .40-.80.
LEGHORN FOWL .35-.55.
MIXED FOWL .50-.70.
ROOSTERS .80-1.80.
BUNNIES EACH 1.75-2.75.
GEESE .40.
TURKEYS .40.
DUCKS 1.00-1.45.
RABBITS .50-1.25.
PIGEONS 1.70-2.40.
GUINEAS 1.00-1.50.
WHITE EGGS: EXTRA LARGE & JUMBO .51-.71; LARGE .65-.70; MEDIUMS .37-.45; PULLETS .35.
BROWN EGGS: EXTRA LARGE & JUMBO .50-.75; LARGE .45-.65.

Indiana Livestock

Homer City, PA

Thursday, Feb. 3, 1994

Report supplied by Auction

BEEF: HEIFERS GOOD 40.75, MEDIUM 68.00-70.00; COMMON 60.00-67.50. STEERS: GOOD 72.50, MEDIUM 69.00-71.00, COMMON 64.00-68.50. COWS: GOOD 49.00, MEDIUM 44.00-47.75, COMMON 40.00-43.50.

BULLS BUTCHER 56.50, BOLOGNA 54.00-56.00.
FEEDERS: GOOD 400 LBS. ST. 75.00-85.00, LARGE FROM 60.00-70.00, HEIFER 70.00-75.00, COMMON 60.00 DOWN.

CALVES: 85-115 LBS. (BULLS) 100.00-130.00, 85-115 LBS. (HFRS.) SAME, 80 LBS. UNDER 60.00 DOWN, 120 LBS. OVER (VEAL) 90.00-99.00.
LAMBS: GOOD 70.00; MEDIUM 60.00-65.00.

HOGS: NO. 1 200-240 LBS. 47.75, 245 LBS. UP 42.00-44.00.
BOARS: 27.00.
LITTLE PIGS: 15.00-40.00 PER HEAD.



Diffenbach Auction Inc.

100 West Jackson Street - Box 186 - New Holland, Pennsylvania 17557
Office: (717) 355-7253 - FAX: (717) 355-9547

HAY & GRAIN SALE EVERY MONDAY - 10:00 A.M.

MON.	FEB. 7	WHOLESALE FURNITURE	6:30 P.M.
FRI.	FEB. 11	FARM EQUIP., TRACTORS & SUPPLIES	9:00 A.M.
WED.	MAR. 2	WINROSS & TOYS	6:30 P.M.
MON.	MAR. 7	WHOLESALE FURNITURE	6:30 P.M.
FRI.	MAR. 11	FARM EQUIP., TRACTORS, & SUPPLIES	9:00 A.M.

EQUIPPED FOR AN AUCTION AT YOUR PLACE OR OURS

ALAN DIFFENBACH AUCT. - AU2258-L

NOTICE TO MY TOBACCO FARMER FRIENDS

If you feel the price is right and you are ready to market your tobacco, or some of it, we will be buying at my warehouse across the street from the auction.

Farmers - We will not unload any tobacco with paper on bales. Receiving Mon., Wed. & Fri. from 8 to 3.

Buyer: Donald Rohrer Eves. 717-687-6802
Buyer: Bill Macon Eves. 215-593-5950

SOUTHBOAT LEAF TOBACCO

661 Vintage Rd. 24 Meadow Ln, PO Box 192
Christiana, PA 17509 Paradise, PA 17562
Answering Service - 215-593-6729



Hay And Straw Sales Will Start At 10 A.M. Every Wed.

GOOD'S AUCTION

11 North Maple Ave.
Leola, PA 17540
717-656-8911
717-656-9554

NEED TO CUT THE FEED BILL?

NEW DAIRY BLEND COMPLETE AND CONCENTRATE FEEDS

COMPLETE FEEDS

#79516
Dairy Blend Flakes
16% All Natural
\$169²⁸

#79518
Dairy Blend Flakes
18% All Natural
\$178²³

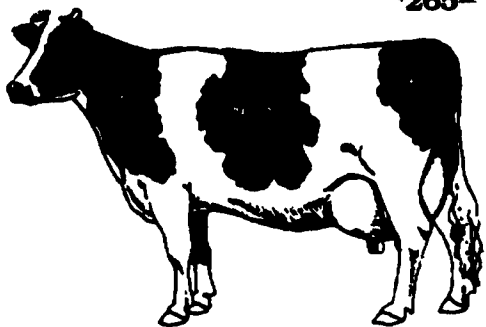
#79520
Dairy Blend Flakes
20% All Natural
\$187⁴⁰

CONCENTRATE FEEDS

#51232
32% All Natural
Protein Pellets
\$232⁰²

#51238
38% All Natural
Protein Pellets
\$254⁸⁷

#50734
34% All Natural
Protein Pellets
w/Steam Flaked Soybeans
\$265⁵²



Bulk Feed Available in 1 to 24 Ton Loads

Feed prices for Week of February 7 and Subject to Change Weekly with Grain Market
Includes 8 ton volume discount and cash discount of 2% due 15th following month. Deduct additional \$3.00 per ton if paid in 10 days



NEW HOLLAND SALES STABLES INC. THE ACTION AUCTION

LIVESTOCK IS OUR ONLY BUSINESS

MONDAY

SLAUGHTER HOGS
EARLY BIRD HOG SALE
7:30 A.M.

Sell Your Hogs At New Holland Sales Stables, Inc.
See them weighed, sold and pickup your check.



10:00 A.M.
HORSES
MULES



1:30 P.M.
BEEF SALE
SHEEP
GOATS
CALVES



THURSDAY

Beef Auction 10:00 A.M.



BULLS, STEERS,
BEEF COWS



1:00 P.M.
STOCKERS & FEEDERS



11:30 A.M.
SHEEP
GOATS
CALVES



WEDNESDAY

HEIFER SALE 11:00 A.M.
COW SALE 12:00 NOON

HEIFERS
BULLS



DAIRY
COWS

We have the usual run of 50 to 100 Heifers, all ages. Loads of fresh cows and springers from our regular shippers. Also some local fresh cows and springers.

1:30 P.M.
FEEDER PIG SALE



Pigs are accepted after 6:30 A.M. State graded from 8 to 12. Dairy Barn and Feeder Pig Barn are cleaned and disinfected weekly for your protection.

NEW HOLLAND SALES STABLES, INC.

12 Miles East of Lancaster Off Route 23, New Holland, Penna.

MANAGERS

Norman & David Kolb - 717-397-5538

Field Representatives

Luke Eberly - 215-267-8698 738-1865
Homer Eberly - 215-267-3047
Ron Ranck - 717-856-9849

Sale Barn Office Manager

Roger Floyd - 717-354-4341
FAX #717-355-0708

Order Buyer

Paul Good - 215-445-8662