

**PUBLIC SALE**  
**OF 2½ STORY FRAME DWELLING**  
**IN BOWMANVILLE**  
**MARCH 5, 1994**  
 Loc.: Along Rt. 625 in Brecknock Twp., Lanc. Co., PA.  
 For information call (717) 445-6181.  
 Terms by  
**ANNA G. MARTIN**  
 Aucts.: LeRoy S. Horst, Lic. #AU000436L & Paul W. Horst

**Public Auction Register**  
 Closing Date Monday 5:00 P.M.  
 of each week's publication

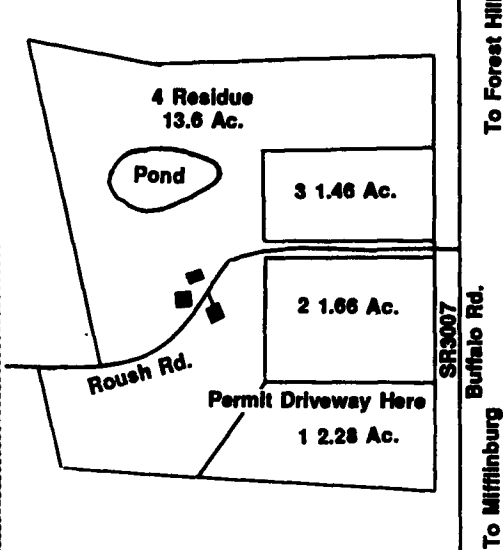
**AUCTION**  
**SAT., FEB. 26,**  
 12 Noon  
**KEESEY & COMPANY**  
 717-428-3013 (W) 717-993-2652 (H)



**OPEN HOUSE FEB. 6 & 13, 1-4**  
 2 acre farmette, 3-4 BR, 1½ baths. Neat as a pin, country kitchen. Great opportunity!  
 Terms! 10% down, balance 60 days.  
 Dir: West of Glen Rock on Rt. 216, near Sticks. Convenient to Maryland.  
 Estate of **MARY SHEFFER**  
 Atty: Jeff Bortner  
 J. Keeseey AU003144L

**SHOP CLOSING**  
**All Equipment For Sale**  
 Press break dies, 8"x24" surface grinder, 18" power hack saw, MIG welding machines, heavy duty pipe bender, 10"x3/16" power shear, Pels iron worker 6"x6", slow speed cold saw, heavy duty double end grinder, CINN 21" drill press, (2) 20 ton punch presses, 60 ton punch press.  
**301/572-5430 703/631-2767**

**PUBLIC AUCTION**  
**OF 13.6 ACRE FARMETTE**  
**PLUS THREE BUILDING LOTS**  
**HOUSEHOLD GOODS**  
**AND TOOLS**  
**FRI, MARCH 11, 1994**  
 At 9:00 A.M., Real Estate At 12:30 PM  
 Location 2 miles north of Mifflinburg, on Buffalo Rd. from Lewisburg take Route 45 West to Mifflinburg turn right, at Coastal Mart, 2 miles to sale site, West Buffalo Twp., Union County, Pa.  
**REAL ESTATE**  
 13.6 Acre Farmette Plus Three Building Lots, Ready To Build



Lot #1 2.28 Acre; Lot #2 1.66 Acre; Lot #3 1.46 Acre. Will be offered separate or all together.  
 Building on 13.6 acre, 2½ story brick house with 2 car garage, FIRST FLOOR, living room, dining room, kitchen with range, dishwasher, refrigerator, carpets, ½ bath, laundry, sun porch, 200 amp elec. service. SECOND FLOOR 3 bedrooms w/closets, 1 full bath, walk in closet, hot air oil heat, 2 good wells. Note: House in real nice condition.  
 Outbuilding with elec. and water 40x60 bank barn, good cond.  
 Pond, in meadow, fruit trees. NOTE: Would make a nice horse farm, nice country setting.  
**AUCTIONEER NOTE: TERMS 10% due at auction, balance 30 days, Open House. Inspection of property by appointment or Open House Feb. 19, Feb. 26 or March 5 1 to 4 PM For land plotting and details, call auctioneer 717-656-8793 or owner 717-966-3750.**  
 Sale Order: Tools, Farm Machinery 9:00 AM and household goods 12:30 Real Estate.  
 Terms by  
**LUKE & KATHRYN SHIRK**  
 717-966-3750  
 Auction Conducted By  
**C.W. Shirk Auction Service**  
 Lic. #2750 Ph. 717-656-8793  
 Not Responsible For Accidents  
 Food At Auction

**PUBLIC SALE**  
**TUESDAY, FEB. 15, 1994**  
 9:00 A.M.

Located 2½ Miles West Of Intercourse, 2½ Miles East Of Route 23, Along Route 772, Lanc. Co. Penna.  
**HORSES**  
**EIGHT BELGIUM WORK HORSES**  
**THREE TEAMS TWO SINGLES**  
 6 To 12 Years Old  
**SIX WILL WORK IN THE LEAD**  
**BROKE THE BEST**  
**35 HI-GRADE HOLSTEIN HEIFERS**  
 35  
 Bred Heifers Yearlings Calves  
 Two Service Age Bulls Four Mo. old Blackstar Son  
 Dams with 38,000 to 40,000 lb. Milk  
 Sired By Select Sires  
**FARM EQUIPMENT**  
 Case "600" 80 H.P. Diesel tractor; New Holland #273 Baler completely rebuilt, with New Lombardini engine; New Idea #323 corn picker; Brady 7' Roto-Beater, 3 yrs. old with 65 h.p. Lombardini diesel engine; New Holland #456 grass mower with 28 h.p. Lombardini Diesel engine; N.H. #402 Crimper.  
 E.J.S. liquid manure spreader and pump, 3 yrs. old; New Idea #206 manure spreader, 1 yr. old.  
 International #56 4-row corn planter; Kuhn hay rake; Zimmerman 32' elevator; I & J two row cultivator, used one year; two McD riding cultivators.  
 Mechanical transplanter; 8-row tobacco sprayer; two Farm-Blit steel wheel wagons with 16' beds; Two Gravity bins on gears.  
 Grimm hay tedder; one horse corn binder; Oliver two Bottom 12" trailer plow; McD 2-way sulky plow; John Deere KBA 24 disc harrow; 9' spring harrow two years old; 10' Brillion cultipacker; 8' cultipacker; four fore-carts, two with auto turn and one with scraper blade.  
 Spring wagon; New Cherry Lane Round Bale Carrier; 12 Volt seeder.  
 Nine sets of harness; collars; bridles; lines; 1, 2, 3, 4, 5, 6, & 7 horse hitches; Hi-pressure washer; Baling presses; stripping room stove; New 10-Lath wheel; sizing boxes.  
**25 TON EAR CORN**  
**DAIRYING EQUIPMENT** — Milkkeeper 830 gallon bulk milk tank, with water cooled compressor; Lister 28 h.p. Diesel, two yrs. old; SPUTNIK; Bender washer; Three Westfalia "BIO" milking units two yrs. old with two 70 lb. and two 80 lb. pails; water heater 1½ year old; twin tubs; single tub; utensil rack; feed and ensilage carts; 12 Volt clipper; electric fences.  
 Owner, **OMAR S. FISHER**

**Henry Kettering, Records**  
**Mel Hoover**  
**Diffenbachs, Auctioneers, 225L**  
 717-393-4464  
 Lunch Stand For Benefit Amish Parochial Schools  
 Baked Goods Appreciated

SAT. JAN. 29 - 10AM, Complete Liquidation Of Selling LVJ Inc., General Contractors Of Frederick, Maryland And Others. Located At The Cochran Auction Complex, 7704 Mapleville Road, Boonsboro, Wash. Co., Maryland. James G. Cochran, Auct.

SAT. JAN. 29 - 10AM, Consignment Auction Of Farm Machinery, Trucks, Loaders & More. Located Teitsworth Auction Lot, Groveland, N.Y.

SAT. JAN. 29 - 10:30AM, 2 Tractors & Machinery. Located Southeast Of Greencastle, Pa., Exit 3 Off I-81 Take Route 16 East 1½ Mile, South 2 Miles On Ridge Road To Second Stop Sign, Left 1 Mile On Leitersburg Road To Farm On Left. Owners, Mr. & Mrs. Stephen Martin. Robert C. Mullendore, Auct.

SAT. JAN. 29 - 11AM, 126 Acre Dairy Farm. Located Along Rt. 73 Between Oley & Pleasantville, Berks County, Pa. Terms By, Omar A. Kurtz. Horning Farm Agency, Inc.

SAT. JAN. 29 - 11:30AM 2 Dairy Herd Dispersals Greenfield Twp. Carbon-dale, RD #1 Lackawanna Co. Larry Barrows, William Clift, owners. Wayne Weaver, auct.

SUN. JAN. 30 - 12:30PM, Bankruptcy Auction John's Big & Tall Men's Clothing & John's Industrial Laundry, 141 S. Spring St., Bellefonte, Pa. Ron Gilligan & Son, Aucts. AU339L & AA2223L.

MON. JAN. 31 - 9:30AM Tractors, discs, combines & corn heads, hay, forage equip. & mowers, soil savers, chisel plows, planters & drill - seeder, field cultivators, plows, cultimulchers, packers & crumblers, cultivators & rotary hoes, misc.

Just S. of Leesburg, Indiana - 6 mi. N of Warsaw, IN. on St. Rd. 15. Polk & Sons, Inc. owner. Daryl Ball, Dennis Polk, John Mowrey, Roland Roberts, aucts.

**FEBRUARY**  
 TUES. FEB. 1 - 9AM Farm machinery, six draft horses, Sputnik, White horse plow, spring wagon. Held for Sylvan & Sarah Stoltzfus on Spring Garden Rd., 2 miles S. of Route 340 in Lanc. Co., Pa., six miles E. of Intercourse, 2 miles W. of White Horse. Steve Petersheim, auct.

TUE. FEB. 1 - 10AM Craft supplies, fabric, wall covering, window shades, hardware, tools. 1825 E. Boston Ave., Phila., Pa. Wm. F. Comly & Son, Inc., aucts.

TUE. FEB. 1 - 11AM, Herd Dispersal For Lee-Mar Farms. Located At Shady Lane Dairy Sales, Inc., 1/4 Mile West Of Quarryville, Pa. Off Rt. 372 On To Oak Bottom Road. Sale Managed By, Shady Lane Dairy Sales Inc.

WED. FEB. 2 - 9AM Building supplies, tools and hardware. 111 N. Maple Ave., Leola, Pa. Goods Auction

WED. FEB. 2 - 2PM Antiques, household goods, antique phonographs & tools. Held at the Horst Auction Center located at the corner of Rt. 322 and Durlach Rd. (approx. 2½ miles west of Ephrata), Ephrata, Lanc. Co., Pa. For Richard Kilhefner, Pauline Roe. Horst Aucts.

WED. FEB. 2 - 6:30PM, Winross & Toys. Located A&C Diffenbach Auction Inc., 100 West Jackson Street, New Holland, Pa. 17557. Alan Diffenbach Auct.

WED. FEB. 2 - 7PM 1½ story all brick rancher w/ horse barn, on ¼ acre.

Ervin & Susie Stoltzfus. Steve Petersheim, auct.

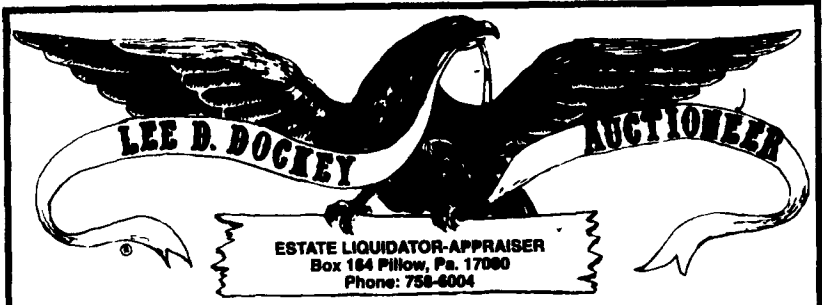
THURS. FEB. 3 - 10 AM Six draft horses, Farm Machinery, kitchen range, AC diesel tractor. Located Bird-In-Hand, Lanc. Co., Pa. On Beechdale Road, one mile N. of Bird-In-Hand. Go N. off Rt. 340 ar RR underpass. Owners, Solomon & Fannie Zook. Petersheim Aucts.

THURS. FEB. 3 - 4PM, Antiques & Collectibles, Trains, Accessories & Toys, Coins & Households, Etc. Located At Freemont Firehall, Mt. Pleasant Mills, Pa. Directions: From Harrisburg Travel North On Rts. 11-15. Just North Of Liverpool, Turn Left On Rt. 104. Continue To Intersection Of Rt. 35. At Traffic Light Turn Left. Proceed 1/2 Mile. Turn Left. Kenneth E. Hassinger & Neil A. Courtney, Aucts.

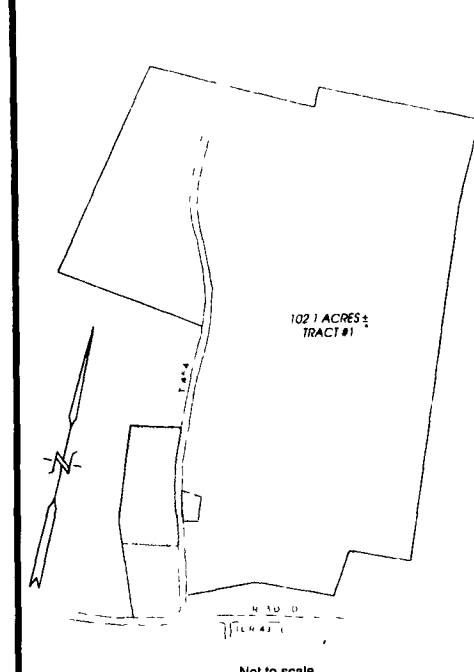
FRI. FEB. 4 - 9AM, Valuable Antiques, Old Toys, Collectibles, Sterling Silverware, 1991 Pontiac Sunbird Automobile. Located At Springetts Fire Co. Social Hall, 3013 East Market St., York, Pa. Owners, Blanche V. Myers & The Late Archie J. Myers. Jacob A. Gilbert, Brian L. Gilbert, Aucts.

FRI. FEB 4 & SAT. FEB. 5 - 9:30AM Business liquidation of Pope's Plumbing & Heating. Mile Hill, 2 miles NE of Sunbury., Pa. In Sunbury from Front St. (Route 147) turn onto Reagan St., go to top of hill, turn N. on Catawissa Ave., 2 miles to sale site. Michael E. Pope, Jr., owner. Mark J. Jones, aucts.

FRI. FEB. 4 - 10AM, Huge Special Auction For Ford Motor Credit Co. Located Ford New Holland Store Rt. 11 South, Cortland, N.Y. Local Banks & Ford New Holland Cortland.



**Public Auction Of**  
**Mahantongo Valley Farm Land**  
**Saturday February 26, 1994 12:00 Noon**



**LOCATION: Approximately 7 miles east of Route 225, 4 miles east of Rebeck, PA, 2 miles west of Leck Kill. Watch for auction signs.**

**TRACT #1: 102.1 ACRES, MORE OR LESS, WITH APPROXIMATELY 90-ACRES TILLABLE, situate in Washington Township Northumberland County having frontage along SR3010 and T454**

**TRACT #2: 6 ACRES 20 PERCHES MORE OR LESS, OF WOODLAND, situate in Upper Mahanoy Township Northumberland County**

**TRACT #3: 5 ACRES 15 PERCHES MORE OR LESS, OF WOODLAND situate in Upper Mahanoy Township Northumberland County**

For additional information or inspection phone 717-425-2493 717-425-2127 or 717-758-6004

**TERMS: 10% DOWN FURTHER TERMS & CONDITIONS WILL BE GIVEN WHEN REAL ESTATE IS OFFERED**

ESTATE OF DAISY M. SNYDER, OWNER  
 HOPE A. REBUCK & JEAN M. SNYDER, CO-POWER OF ATTORNEYS

JOSEPH C. MICHETTI, JR., ATTORNEY  
 AUCTIONEERS: DOCKEY #AU229L, DOCKEY-ROMBERGER #AU1683L & DEPPEN #AU1957L