

Delmarva Broiler/Fryer Market

Thursday, January 27, 1994

Movement of ready-to-cook whole birds was slow to fair at best. Seller offerings were in a range of adequate to available. Live supplies were moderate, instances light. Weights were mixed in a full range, but often lighter than desired. Processing schedules were reduced at some plants, but remained very heavy overall. Less than trucklot asking prices were unchanged at 53 to 65 cents. Trade sentiment was steady to lower. Forecasts of more adverse weather in shipping channels created some additional buying, but most plants noted it as having a slowing affect on activity. Drums were short. Other parts were fully adequate or available.

ESTIMATED SLAUGHTER OF BROILER/FRYERS IN DELMARVA (000)

ESTIMATED ACTUAL AVG. WEIGHT ACTUAL AVG. WEIGHT 01/27 01/25 01/25 01/20 01/18 2,187 2,425 4.70 2,179 4.81.

*BROILER/FRYER CURRENT NEGOTIATED PRICES FOR IMMEDIATE DELIVERY INCLUDES MOSTLY MULTIPLE-DROP SHIPMENTS OF BRANDED AND WING TAGGED TO NEW YORK CITY FROM DELMARVA BRANDED U.S. GRADE A RANGE 49-65 WEIGHTED AVERAGE 54.09 NO. OF BOXES 11,359.

*7 of 9 plants reporting.

Philadelphia Eggs

Thursday, January 27, 1994

Report Supplied by USDA

MARKET COMMENT: TRADE SENTIMENT WAS STEADY TO FIRM. DEMAND WAS IRREGULAR, AND MOSTLY MODERATE. SUPPLIES OF LARGE WERE GENERALLY ADEQUATE, AND THE BALANCE OF SIZES WERE TIGHT TO ADEQUATE. CONTINUED WARNINGS OF HEAVY SNOWFALL FOR THE WEEKEND CAUSED MANY OPERATIONS TO HOLD EXTRA EGGS WITH SOME DEGREE OF CONFIDENCE BECAUSE DELIVERY MAY AGAIN BE INTERRUPTED. A EXTRA LARGE .65-.68, A LARGE .63-.66, A MEDIUM .58-.62.

National Egg Market

Tuesday, January 25, 1994

NATIONAL EGG MARKET - AT A GLANCE: Prices were unchanged to higher for mediums in the Mid-Atlantic area, and unchanged on the balance. The market tone was steady to firm for mediums, and steady to fully steady for other sizes. Demand remained mixed, and was mostly moderate to good. Supplies were balanced or available except mediums were often short, and extra-large were sometimes sought. Breaking stock supplies were adequate to barely adequate with prices generally unchanged, but higher prices were paid in the Midwest when offerings were limited. Live hen markets continued to range steady to weak, and offerings were adequate to fully adequate of the light to moderate demand.

Because of recent inclement weather, several markets indicated reduced sales and several were unavailable.

N.E. Weekly Shell Egg Report

January 25

Report Supplied by USDA

PRICES PAID PER DOZEN GRADE "A" BROWN EGGS IN CARTONS DELIVERED TO RETAIL STORES:

	EX. LARGE	LARGE	MEDIUM	SMALL
MAINE	1.02	99	78	51
N. HAMP.	.95-.99	.92-.96	.71-.75	.44-.48
MOSTLY	.97-.98	.94-.95	.73-.74	.46-.47
RHODE ISLAND	.98-1.02	.95-.99	.74-.78	.47-.51
MOSTLY	.98	.95	.74	.47
VERMONT	1.05	1.02-1.03	.81-.83	
MOSTLY	1.02	.81		

Weekly New York Egg Market Northeast Quotes

From Fri., January 21 to Thursday, January 27

	FRI.	MON.	TUES.	WED.	THURS.
WHITE					
JUMBO	.75	.75	.75	.75	.75
EX. LARGE	.73	.73	.73	.73	.73
LARGE	.69	.69	.69	.69	.70
MEDIUM	.64	.64	.65	.66	.67
PULLETS	.50	.50	.50	.51	.52
OFF GRADE	.57	.57	.57	.57	.58
BROWN					
EXTRA LARGE	.84	.84	.84	.84	.84
LARGE	.80	.80	.80	.80	.80
MEDIUM	.61	.61	.61	.61	.61
OFF GRADE					
UNDERGRADES AND CHECKS	.24	.24	.24	.24	.24

BREAKING STOCKS: FRI. 42-44 LBS. 32.00-34.00, 48-50 LBS. 37.00-39.00, 50 LBS. AND UP 39.00-40.00.

Northeast Chicken Parts

Thursday, January 27, 1994

Buying interest was quite irregular and generally centered around weather related problems. Supplies of boneless skinless breasts with tenders were sufficient for current needs but trading was reported at lower prices. Trucklot volumes of product without tenders was available and slow to clear. Line run breasts were at least adequate but appeared in better balance than prior day. Most trading was reported at unchanged prices. Most dark meat items were okay at current prices. Thighs were still available. Wings ranged ample to burdensome for a very light demand.

PRICES PAID PER POUND, ICE PACKED AND CO2 PACKED BROILER/FRYER PARTS, DELIVERED TO FIRST RECEIVERS IN POOL TRUCKLOT AND TRUCKLOT QUANTITIES.

ITEM CURRENT NEGOTIATED TRADING* BREAST - B/S (W & W/O TENDERS) 185-190 BREAST - WITH RIBS 90-91 BREAST - LINE RUN 89 LEGS 40-41 LEG QUARTERS (BULK) 30 DRUMSTICKS 38-39 THIGHS 33-34 WINGS (WHOLE) 49-50 BACKS AND NECKS (STRIPPED) 10-12 LIVERS (5 POUND TUBS) 35-40 GIZZARDS (HEARTS) 40-45 INCLUDES NEW YORK CITY METROPOLITAN AREA, NORTHERN NEW JERSEY, MASSACHUSETTS, CONNECTICUT, RHODE ISLAND, AND PENNSYLVANIA (NORTHEAST OF HARRISBURG). * TODAY'S NEGOTIATED SALES AS OF 11:30 A.M.

Heinsey's Poultry

Roots, East Petersburg

Tuesday, January 25, 1994

PRICES PAID PER POUND, EXCEPT AS NOTED RANGE:

- Muscovy Ducks - Drakes .84 - .96.
- Muscovy Ducks - Hens .86 - .92.
- Pekin Ducks .40 - .64.
- Red Fowl 4-4.5 .30 - .46, Red Fowl 5-6 .40 - .62.
- Crossbred Fowl 5-9 .30 - .64.
- Crossbred Roosters 4-6 .40 - .84.
- Crossbred Roosters 7-11 .40 - .78.
- Guinea Fowl .50 - .75.
- Banty Roosters 2.50 - 5.00 ea.
- Banty Hens 1.00 - 2.25 ea.
- Leghorn Hens .16 - .22.
- Silkie 3.50 - 4.35 ea.
- Geese 8-12 .20 - .34.
- Pigeons 2.00 - 2.35 ea.
- White Pigeons 3.00 - 3.60 ea.
- Rabbits 4-6 .90 - 1.28, Rabbits 7-11 .80 - 1.00.
- Bunnies 1.00 - 3.50.
- Guinea Pigs 2.00 - 3.75 ea.
- Doves 2.00 - 3.75 ea.
- Chukars 4.00 - 4.60 ea.
- Pullets 4-6 .40 - .54.
- Total Coops Sold 640.

LANCASTER FARMING STAFF

Everett R. Newwanger, Managing Editor

Lou Ann Good, Staff

Andy Andrews, Staff

Vernon Achenbach, Jr., Staff

NEWS CORRESPONDENTS

Joyce Bupp, York County Seven Valleys (717) 428-1865

Connie Leinbach, Berks County Boyertown (215) 367-4376

Randy Wells, Indiana Marion Center (412) 397-2529

Judith Patton, Union Millilburg (717) 686-4770

Gall Strock, Millin Belleville (717) 935-5875

Linda Williams, Bedford (814) 623-5745

Gay Brownlee, Somerset Salisbury (814) 662-2127

Carol Pearce, Bradford Wysox (717) 265-5172

Bonnie Brechbill, Franklin Chambersburg (717) 369-2916

David Hiebert, Westmoreland Scottsdale (412) 887-5929

Agnes Smith, Northampton Mt. Bethel (215) 588-8262

Christine McCahron, Juniata Millintown (717) 436-2886

Carol & Onalee Smith, Mercer Greenville (412) 588-6203

C.J. Houghtaling, Tioga Middlebury Center (717) 376-2821

Beth Miller, Cumberland Newville (717) 776-6511

Sharon Sch... Maryland New Windsor (301) 635-2654

Eva Martin, Maryland Smithsburg (301) 824-2106

SUBSCRIPTION INFORMATION

Subscription Price:

\$19.75 per year; \$37.50 - 2 years

\$30.00 per year outside of:

PA, NJ, MD, DE, NY, OH, VA & WV

\$58.00 - 2 Years

Non-Refundable

Lancaster Farming (ISSN 0023-7485) is published weekly for \$19.75 per year; \$37.50 - 2 years by Lancaster Farming, P.O. Box 609 1 E. Main Street, Ephrata, PA 17522 Second Class postage paid at Ephrata, PA 17522 POSTMASTER Send address changes to LANCASTER FARMING, 1 East Main Street, P.O. Box 609, Ephrata, PA 17522.

Phone Lititz (717)626-1164 or Ephrata (717)733-6397, Lancaster (717)394-3047 FAX 717-733-6058

For address change form or new subscription see near Mailbox Markets.

Members of National Association of Agricultural Journalists

Pa. Newspaper Publishers Association, and National Newspaper Association.

National Advertising Representative

J.L. Farmakis, Inc.

Phone (203)966-1746

Available On Microfilm

Copies of Lancaster Farming are available on microfilm from University Microfilms International, 300 North Zeeb Road, Ann Arbor, Michigan. Any questions about their service should be directed to the publishing manager.

PUBLISHER'S LIABILITY FOR ERROR

The publisher shall not be liable for slight changes or typographical errors that do not lessen the value of an advertisement. The publisher's liability for other errors or omissions in connection with an advertisement is strictly limited to publication of the advertisement in any subsequent issue or the refund of any monies paid for the advertisement.

BUY, SELL, TRADE OR RENT THROUGH THE CLASSIFIED ADS

NATURAL GRAIN DRYING

FLOORS

WET TANKS

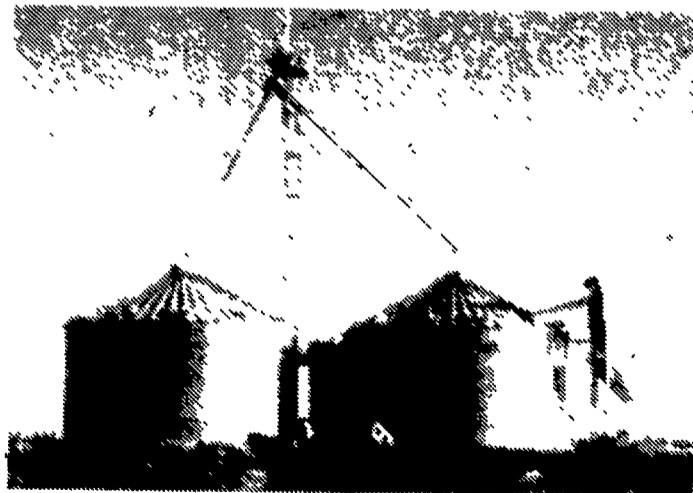
GRAIN DRYERS



FEED BINS

AUGERS

DRYING FANS AND HEATERS



Check Our Low Prices Before You Buy

automatic farm systems

608 Evergreen Rd., Lebanon, PA 17042

(717) 274-5333



"We not only give you what we have; but also what you want."

We Buy Poultry Weekly For Cash!

- Leghorn Fowl
 - Spent Fowl
 - White Pigeons
 - Bantams
 - Bantam Roosters
 - Broilers
 - Rabbits
 - Guinea Hens
 - Muscovy Ducks
- We Pick Up At The Farm
Watkin's Live Poultry
718-272-8712
between 7 AM & 8 PM
718-843-9302
After 7 PM

WE BUY POULTRY FOR TOP CASH WEEKLY

- Muscovy Ducks
 - Rabbits
 - Broilers
 - Bantam Roosters
 - White Pigeons
 - Guinea Hens
- We Buy 1000-1500 Red Spent Fowl and Leghorn Fowl Weekly
We pick up at the farm (718) 665-1441 between 7 am - 5 pm OVER 35 years in the area

EGG INDUSTRY SOFTWARE

Custom Programming

We specialize in software for the egg industry.

Call us with your needs.

Heritage
Computer Solutions

(a division of Heritage PMS, Inc.)

Annville, PA

1-800-388-EGGS