

Farm Calendar



(Continued from Page A10)

Marriott, Duluth, Ga., thru Feb. 5.

1994 Delaware Ag Outlook Conference for Grain Producers, Sheraton Inn, Dover, Del., 8:30 a.m.-3 p.m.

Pa. Holstein Assoc. Southeastern District election and show meeting, Wegman's Restaurant, Reading, 10:30 a.m.

Saturday, February 5

Small Business Development Seminar, Cross Creek Resort, Titusville, 9 a.m.-3 p.m.

Lancaster County 4-H Benefit Auction, Farm and Home Center, Lancaster, 9:30 a.m.-4 p.m.

EAYFA annual banquet, Durlach/Mt. Airy Fire Hall, 6:45 p.m.

Sunday, February 6

Monday, February 7

ISA Penn-Del Chapter Annual Shade Tree Symposium, Host Conference Center, Lancaster, thru Feb. 8.

Integrated Crop Production Workshop, Schuylkill Campus, Schuylkill Haven, continues Feb. 14 and 21.

PDA pesticide exams, Lancaster Farm and Home Center, 8:30 a.m.-noon.

Schuylkill Agribusiness Forum, Pine View Acres, Pottsville, 9 a.m.-3:30 p.m.

Pa. Dairy Promotion Program, Nittany Lion Inn, State College, 10 a.m.-3 p.m.

Adams County Crops and Soils Day, extension office, 9:30 a.m.-3 p.m.

Blair/Huntingdon Crops Day, Fir Hall, Alexandria, 9:30 a.m.-3 p.m.

Tuesday, February 8

Pa. Young Farmers Association Winter Convention, Eden Resort and Conference Center, Lancaster, thru Feb. 10.

Sire Power county meeting, Red Lion Cafe, Deturksville.

Intensive Forage School, Lebanon

Valley Ag Center, thru Feb. 15.
Lancaster County Crops and Soils Day, Lancaster Farm and Home Center, 9 a.m.-3:30 p.m.
Holstein Winter Forum, Columbus Marriott/North, Columbus, Ohio.

Wednesday, February 9

Swine producers meeting, Franklin County Extension Office, Chambersburg, 7:30 p.m.

Custom manure haulers meeting, Lancaster Farm and Home Center, 1 p.m.-3:30 p.m.

Pa. Forage School, Gap Diner, Gap, also Feb. 16.

Lebanon Valley National Bank Annual Ag Seminar, Prescott Fire Hall, 8:30 a.m.-3:30 p.m.

Herd Health Management Workshop, Rostraver Grange, Belle Vernon, 6:30 p.m.-9 p.m.

Farm tax update meeting, Country Focht's Restaurant, 1 p.m.-3 p.m.

York County Soybean Growers School, cooperative extension office, 9 a.m.-2:30 p.m., also Feb. 16.

Holstein Winter Forum, Days Inn, Butler Conference Center, Butler.

Thursday, February 10

CRP Conference, Renaissance Hotel, Arlington, Va., thru Feb. 11.

Dairy Nutrition Teleconferences and Workshops, Lancaster Farm and Home Center, and elsewhere, repeats Feb. 17 and 24, 10 a.m.-3 p.m.

Venango County Dairy Nutrition School, extension office, repeats Feb. 17, 24.

Bradford County Dairy Nutrition Workshop, extension office, repeats Feb. 17, 24.

Cecil County, Md., Dairy Day, Calvert Grange, Calvert, 9:30 a.m.-3 p.m.

Atlantic Breeders Cooperative annual meeting, Penn Twp. Fire Hall, Huntsdale, noon.

Lancaster County Fruit Growers Banquet, Leola Family Restaurant, Leola, 6:30 p.m.

Lancaster County Livestock Banquet, Country Table Restaurant, Mount Joy, 6:30 p.m.

ABC annual Dist. 3. meeting, Mt. Zion Fire Hall, 7 p.m.

Atlantic Dairy Day, Seven Valleys FH, 10 a.m.-2 p.m.

Northeast Regional Vegetable Growers meeting, Thompson's Dairy Bar, Sloatton, 9:30 a.m.-3:30 p.m.

Northeastern Pa. Turfgrass and Grounds Maintenance School, Mountain Laurel Resort, White Haven, 9 a.m.-3 p.m.

Kutztown Produce Auction Fifth Annual Grower's meeting, Leesport Market Banquet Hall, 9 a.m.-3 p.m.

Farming For Water Quality Workshop, Paxtonville United Methodist Church, Middleburg, 9:30 a.m.

Lancaster/Chester Pork Producers Banquet, rescheduled from Jan. 27, Yoder's Restaurant, New Holland, 6:30 p.m.

Holstein Winter Forum, Sheraton Inn East, Harrisburg, 9 a.m.-5 p.m.

Pennsylvanians Work For Higher Quality Eggs

LITITZ (Lancaster Co.) — Pennsylvania egg producers are leading the nation in an ambitious research effort to reduce the incidence of salmonella enteritidis (SE) in their laying flocks.

The research is described in an article in the current issue of SunnySide, a newsletter produced by Sauder's Eggs of Lititz.

Salmonella bacteria can cause salmonellosis, a food-borne illness with flu-like symptoms. They are abundant in nature, and can multiply rapidly in warm, moist environments.

Outbreaks of salmonellosis are associated mostly with improper food handling, according to Mac McLaurin, president of the Egg Association of America. In the article, he described the coalition of representatives from federal and state agencies, research institutions, and the egg industry that began the Pennsylvania SE Pilot Project in 1991.

Egg producers enrolled in the project work with researchers to gather data and to implement stringent measures to combat SE, so that even improperly handled eggs will be less likely to provide a haven for the bacteria. One of the most important control measures is the elimination of mice from laying houses. Mice harbor SE in their digestive tracts, and they are attracted to laying houses by the chicken feed and warmth.

Some of the producers in the SE Pilot Project have, in fact, reported a decrease in the incidence of SE in their laying flocks as they have decreased the number of mice in the houses.

All the laying flocks owned by Sauder's are participating in the SE Pilot project. One of the newest company flocks is housed in a state-of-the-art facility in Dauphin County's Hegins Valley. The four-house operation is designed to accommodate 500,000 hens at one time, and is described in another SunnySide article.

Key features of the Hegins Valley complex include four slow-moving rod conveyors which gently move the eggs from the hen houses to the four packing lines. Handling the eggs gently means fewer cracks and higher quality.

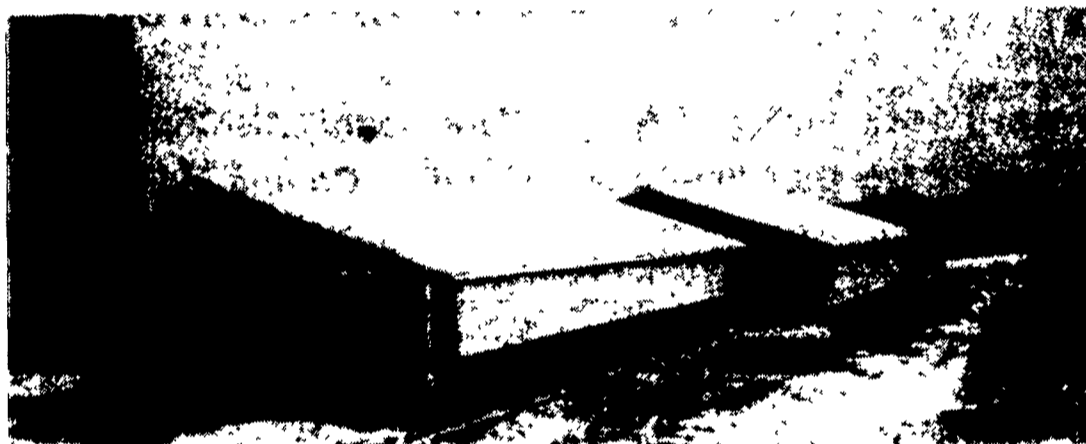
Also at Hegins Valley, the chickens are housed six to a cage rather than the usual nine in order to give the birds more space and to help them achieve higher production. There's a special high-efficiency ventilation system to further increase the birds' comfort, and a new method was employed to keep the eggs cleaner.

Other items in the current issue of SunnySide include a story about the American Egg Board's new \$4.5 million TV ad campaign, an item about the FDA's support of foam recycling, a photo of a bench made from recycled egg cartons and milk jugs, and a recipe for a low-fat chicken broccoli bake.

For a copy of SunnySide, contact Sauder's Eggs, 570 Furnace Hill Pike, Lititz, PA 17543, (717) 626-2074.

We Specialize in Building, Remodeling, and Automating Dairy Facilities...

Landsdown Farm, Berlin, PA The Countrymans



Combination Freestall & Herd Replacement Barn (54x135x12 and 42x96x12)

Featuring:

- Norbco Curtains, Stalls, Gates & Headlocks
- Northbrook Farm Mattress Material
- Alley Scraper w/Gravity Manure
- Sloped Heifer Manure Pack Area
- Energy Free Dump Waterers

— We Are Builders/Equipment Dealers —

- We offer total systems design with parlor automation a specialty.
- We build complete facilities and offer many years of experience.
- We also do repairs and remodeling, offering plumbing and electrical services.
- We are dealers for the following equipment:
 - Germania Parlor Automation Equipment
 - Norbco Barn Equipment, Parlor Stalls & Curtain Systems
 - Chore Time Feed Bins and Delivery Systems

Give Us A Ring If You're Thinking About A Project Or
Need Advice On Ventilation, Milking Systems Or Animal Housing.
Give Us A Try — Have It Knisely Built!

We offer full service on our products 24 hours a day.

Knisely BUILT

BUILDINGS & HOMES NICELY BUILT

Bill Knisely 229 Cornfield Lane Port Matilda, PA 16870 814-692-4110
John Clapper Roaring Spring, PA 814-224-4297