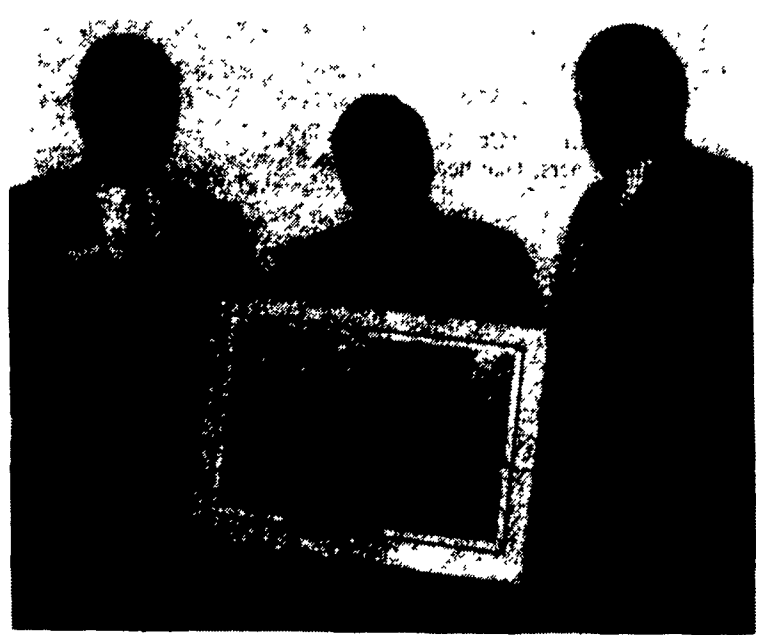


Scholarship awards were presented to students in agricultural studies. In the photo are from left, standing, Gary Hennip, Sire Power; Nathan Dewing; Kirk Sattazahn, Lew Campbell Memorial award; Howard Reyburn; Eric Stoltzfus and Ted Redgley, Sire Power. Seated, Robert Detrick; Jennifer Trout; Suzanne Cadwallader and Robert O'Toole.



Special presentations were made to Renato Santuari, (center), from Italy. Santuari is a buyer from the international division of Sire Power. Gary Rickard, president, left, and Rinell Vincent, director of marketing, made the presentations.

EVERETT NEWSWANGER
Managing Editor

HERSHEY (Dauphin Co.)—Described as "our best year yet," officials of Sire Power, Inc., announced at their annual meeting Wednesday that the breeding cooperative had finished the 1992-1993 fiscal year with record-breaking income, sales, and profitability.

"This was the first year in the history of Sire Power that we exceeded \$16 million in income," said DuWayne Kutz, general manager. "To accomplish the excellent year that has just been completed, expenses were also kept at a minimum. The strong financial health of your cooperative is shown by a balance sheet of \$3.29 of assets for every \$1 of liability and no current indebtedness."

President Gary Rickard said in his report that during the fiscal year, the board of directors, in conjunction with the management team, made the decision to significantly alter their marketing philosophy within the United States. Marketing agreements with other bull stud organizations across the nation were terminated, and district sales managers hired by Sire Power have been employed are in place in most areas.

In addition, the board voted to continue financial support for research projects, most notably the support for research being directed by Dr. Roy Ax at the University of Arizona.

As usual, one of the highlights of the meeting is the recognition of the Sire Power scholarship recipients. Recipients of these scholarships must be incoming college sophomores, juniors, or seniors. The funds must be used for studies in any agriculturally related field. Eligibility for these awards includes membership in one of Sire Power's membership sales divisions (Northeast, Maryland, or West Virginia) by parents, guardians, or the applicant.

In addition, a \$2,000 scholarship was awarded in memory of past Sire Power general manager, Lew Campbell. This year's recipient of the Lew Campbell Memorial Scholarship is Kirk Sattazahn of Womelsdorf. Sattazahn is a student at Penn State, majoring in agricultural business management. While in college, he has been active in many organizations. After graduation, Sattazahn plans to pursue a job in a government-related position serving agriculture to "help insure that the best interests of agriculture are represented."

In the Northeast Sales Division, scholarship recipients were: Scott Youse, Olay; Nathan Dewing, Warren Center; Robert O'Toole, Loysville; Robert Detrick, Kane; Steven Dietrich, Germansville; Suzanne Cadwallader, Salem, NJ; Jeffrey Pirrung, Ulysses; Megan Moyer, Schuylkill Haven; Erick Stoltzfus, Douglassville; and Melanie Eachus, Woodstown, NJ.

Maryland Sales Division recipients include: Jennifer Trout, Forest Hill, MD; Lori Anruk, Townsend, MD; Howard Reyburn, Oxford; and Dawn Kniel, Woodbine, MD.

William Pratt of South Point, Ohio, was the West Virginia Sales Division recipient.

A special recognition award was given to Renato Santuari from Italy for international sales. Santuari is in the area checking on daughters of Sire Power bulls in members' herds. Retiring director awards were given to Clifford Sands and Ralph Shank.

Tom Jadin, program development coordinator for Wisconsin's Winnebago Mental Health Institute, was the featured speaker on "Reaching New Heights Without Climbing the Walls." Jadin took a light-hearted yet practical look at how farmers can remain motivated, caring, productive, well, and sane.

See Your White-New Idea Dealer Listed Below.

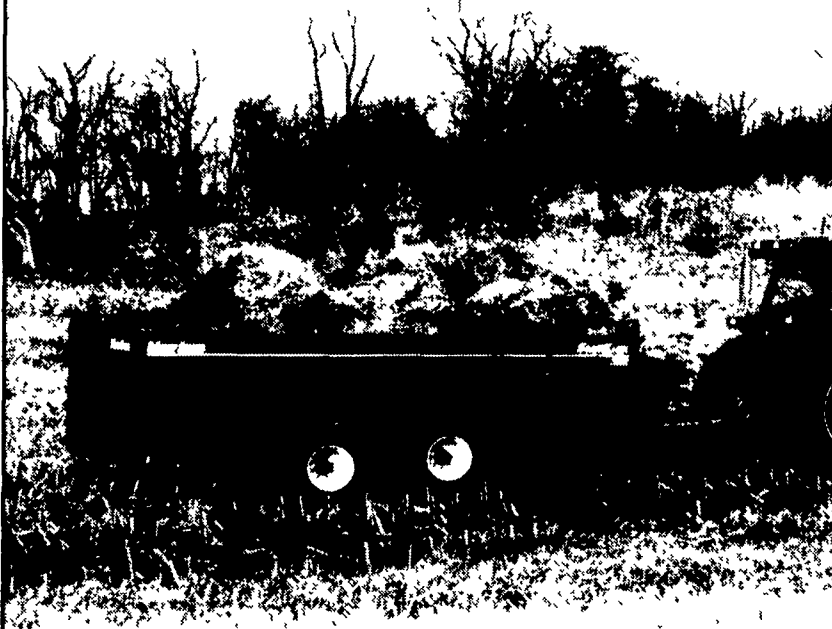
NEW JERSEY

Bridgeton
Leslie G. Fogg Inc
Columbus
Reed Brothers Equipment
Shiloh
Farm Rite Inc.

PENNSYLVANIA

Airville
Farmers Equip & Supply
Bechtelsville
Miller Equipment
Belleville
Ivan J Zook & Sons
Bethel
Zimmerman Farm Service
Bloomsburg
William F. Welliver
Chambersburg
Chambersburg Farm Service
Cochranville
Stoltzfus Farm Service
Dover
George N Gross Inc
Everett
Sollenbergers Equipment
Gettysburg
Yingling's Implement
Honesdale
Marshall Machinery
Klingerstown
Stanleys Farm Service
Lebanon
Umbergers Of Fontana
Mahaffey
Hutton Farm Equipment
Mercer
Ralph W Kyle Inc.
Oakland Mills
Peoples Sales And Service
Quakertown
C. J. Wonsidler Bros
Quarryville
A L Herr & Brother
Somerset
Lincoln Supply & Equipment
Tunkhannock
Ace Jurista

Tough Shredder



SideKick spreaders power through even the toughest manure.

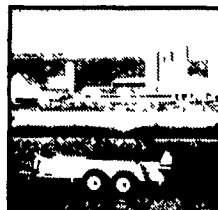
With a new SideKick 3200 series side-delivery spreader, you'll power through tough manure when others shudder.

The planetary drive system and twin augers power through all types of manure from slurry to heavy pen pack to dry feedlot to gritty poultry litter

The unique vertical expellers shred manure for a fine application. And the hydraulic expeller door

makes the rate easy to control, too.

New Idea 3600 series box spreaders have earned a reputation for a long-life and an exceptional spread pattern



See your dealer or call
1-800-767-3221 for information.

**NEW IDEA®
SPREADERS**