

## Lancaster Co. Livestock Market Auctions

**Lancaster Livestock Auction**  
 Lancaster, Pa.  
**Monday, January 24, 1994**  
 Cattle Calves Hogs Sheep Goats

Monday's Auction	903	63	334	448	193
Last Monday	684	31	168	973	580
Last Year	836	96	361	810	292

**CATTLE:** Trends not comparable; markets not reported last week because of ice, snow and cold weather. Supply included 69% slaughter steers, 10% slaughter heifers, 13% cows, with the balance bulls.

**SLAUGHTER STEERS:** Choice 2-3 few 4 1130-1425 lb 70.00-72.85; High Choice and Prime 2-4 1255-1425 lb 72.50-74.00, one lot mostly 3 1335 lb 74.75, one lot 3-4 1500 lb 69.25; few Choice 2 1150-1325 lb 73.00-74.00; Select and low Choice 2-3 1100-1450 lb 66.00-69.50.

**HOLSTEINS:** Choice 2-3 1200-1600 lb 60.00-62.00; few High Choice and Prime 2-3 1300-1550 lb 62.00-64.75; Select 1-3 1200-1650 lb 57.00-60.50.

**SLAUGHTER HEIFERS:** Choice 2-3 925-1350 lb 66.00-70.00; few Choice 2 1050-1250 lb 70.00-71.50; Select 1-3 950-1200 lb 60.00-63.50; Good and Choice 2-3 1100-1500 lb 58.00-62.25.

**COWS: LOW DRESSING BULK HIGH DRESSING** Breaking Utility & Commercial 1-3 46.00-48.00 48.00-50.00 Cutter & Boning Utility 1-2 44.50-46.50 46.50-48.00 Canner & low Cutter 40.00-42.00 42.00-44.50.

**BULLOCKS:** Few Choice 2-3 1170-1390 lb 68.00-75.50.

**BULLS:** Yield grade 1 1300-2050 lb 63.00-67.50, six head 1490-2055 lb 72.00-76.25; Yield grade 2 950-1500 lb 58.00-62.50, few low dressing 55.00-58.00.

**CALVES:** Insufficient volume sold for slaughter for a market test.

**RETURNED TO FARM:** Bulk 90-120 lb Holstein bulls 140.00-175.00.

**HOGS:** Trends not comparable because of weather last week.

**BARROWS AND GILTS:** US 1 215-250 lb 45.50-46.00, US 1-3 210-260 lb 44.00-44.50.

**SOWS:** US 1-3 300-500 lb 33.00-35.50, 500-600 lb 35.50-38.00, Couple 38.00-39.25.

**BOARS:** Couple 350-550 lb 29.50-30.00.

**SHEEP:** Markets not reported last week because of weather. Supply included 60% woolled lambs, 10% new crop lambs, with the balance slaughter ewes.

**WOOLED LAMBS:** Choice 2-3 80-110 lb 65.00-75.00, 110-135 lb 60.00-65.00, 60-80 lb 75.00-95.00.

**NEW CROP LAMBS:** Few Choice 30-55 lb 95.00-135.00.

**SLAUGHTER EWES:** Choice 2-3

**Vintage Livestock Auction**  
 Paradise, Pa.  
**Tuesday, January 25, 1994**  
 Report Supplied by USDA  
 Cattle Calves Sheep Goats

Today	833	1076	4	0
Last Tuesday	239	481	0	0
Last Year	690	769	6	0

**CATTLE..USDA..** Supply included 21% sl. steers and 69% cows. Compared with Tuesday's market: sl. steers steady, instances .50 lower; small supply sl. heifers steady; cows steady, instances 1.00 higher; bullocks and bulls not tested. **SLAUGHTER STEERS:** Choice 2-3 few 4 1080/1475 lbs. 69.50-73.00, few 73.00-73.50, Choice 2 1100/1425 lbs. 73.00-74.50, couple 74.50-75.25, Choice 3 to mostly 41200/1450 lbs. 66.00-69.50, Select and Low Choice 2-3 1100/1400 lbs. 67.00-69.50. **HEIFERS:** Choice 2-3 1000/1160 lbs. 65.50-69.25, couple Choice 2 1000/1225 lbs. 69.25-70.25 **COWS:** Breaking Utility and Commercial 1-3 bulk 45.75-48.25, high dressing 48.25-49.50, Cutter and Boning Utility 1-3 low dressing 43.50-45.00, bulk 45.00-48.00, high dressing 48.00-49.50, couple 49.50-50.75, Canner and Low Cutter 1-2 low dressing 38.00-41.00, bulk 41.00-44.50.

**CALVES...Vealers steady.** Supply included 824 in graded sale in which 88% sold to return to farm. **VEALERS:** one Choice 270 lbs. 80.00, High Good and Low Choice 80/110 lbs. 50.00-57.00, few 57.00-65.00, Standard and Low Good 70/95 lbs. 35.00-40.00. **RETURNED TO FARM:** 350 head 95/125 lbs. Holstein bulls 141.00-159.00 and 55 head 85/95 lbs. 105.00-120.00, 105 head small frame 100/115 lbs. 122.00-137.00 and 75 head 90/95 lbs. 70.00-105.00; 25 head 100/115 lbs. Holstein heifers 150.00 and 40 head 80/95 lbs. 105.00-110.00, 25 head small frame 90/105 lbs. 92.00-100.00.

**SHEEP...Insufficient volume for a market test.**

**GOATS...No market test.**

35.00-55.00; Utility and Good 1-3 25.00-50.00.

**GOATS:** All goats sold by the head. **BILLIES:** Bulk 60.00-95.00, few 100.00-125.00. **NANNIES:** Bulk 50.00-60.00, few 40.00-50.00. **YEAR-LINGS:** Few Good 40.00-50.00. **KIDS:** Choice 30.00-40.00; Good 20.00-30.00.

**Lancaster Livestock Auction**  
 Wednesday's market report has been discontinued until further notice because of insubstantial receipts.

**New Wilmington Livestock Auction**  
 New Wilmington, Pa.  
**Monday, January 24, 1994**  
 Report Supplied by PDA

**CATTLE 179.. PDA ..** Supply included 39 feeder cattle. **STEERS:** few Choice 1090/1385 lbs. 67.00-68.75, few Select 62.75-64.25. **HEIFERS:** Choice 1020/1280 lbs 66.00-69.25, few Select 64.75-65.50, few Standard 50.00-60.00. **COWS:** Few Breaking Utility and Commercial 43.50-44.75, Cutter and Boning Utility 42.00-46.75, few to 49.00, Canner and Low Cutter 37.00-43.00. Shells down to 30.00. **BULLS:** Couple Yield Grade No. 1 1420/1865 lbs. 64.00 & 70.00, few No. 2 965/1865 lbs. 42.00-58.00. **FEEDER CATTLE:** Steers: few Medium Frame No. 1 225/415 lbs. 71.00-85.00; Heifers: few Medium frame No 1 295/700 lbs 62.00-66.00, few Large Frame No. 2 370/750 lbs. 40.50-45.00; Bulls: few Medium Frame No. 1 450/755 lbs. 60.00-67.00, few Large frame No 2 480/500 lbs 75.00-76.00.

**CALVES 286..33 %** sold for slaughter **VEALERS:** Standard and Good 80/120 lbs 40.00-65.00, Utility 50/120 lbs. 10.00-40.00. **FARM CALVES:** No. 1 Holstein bulls 120/135 lbs. 122.00-132.00, 95/115 lbs. 144.00-158.00, 90 lbs. 129.00, No. 2 90/115 lbs. 59.00-118.00; few No. 1 Holstein heifers 95/110 lbs. 167.50-175.00, few No. 2 75/130 lbs. 70.00-145.00; Beef cross bulls & heifers 85/115 lbs 70.00-145.00.

**HOGS 420...BARROWS AND GILTS:** US 1-2 220/260 lbs. 44.35-45.50, individuals to 48.50, 1-3 220/270 lbs. 43.50-45.00, few US 2-3 210/230 lbs. 40.50-42.50, US 1-3 200/210 lbs. 40.50-42.00. **SOWS:** U: 1-3 320/555 lbs. 36.00-45.00, mostly 38.00-41.50, US 2-3 420/615 lbs. 34.00-40.00, few Medium 300/515 lbs 32.50-36.00. **Boars 200/640 lbs 28.00-31.50, one 37.50.**

**FEEDER PIGS 120... US 1-3 25/35 lbs. 15.00-17.00, 45/55 lbs 22.00-24.00, US 2-3 30/50 lbs. 13.00-16.00, lot 60 lbs 20.00-- per head.**

**SHEEP 119..** Woolled sl. lambs: Choice 90/100 lbs. 55.00-60.00, 100/135 lbs 50.00-56.00, 70/90 lbs 61.00-65.00, 60/70 lbs 62.00. **New Crop:** one Choice 85 lbs 78.00. **Slaughter sheep:** 15.00-36.00.

**GOATS 4...few Large 49.00-50.00, one Medium 25.00... all per head.**

**New Holland Livestock Auction**  
 JANUARY 27, 1994  
 Cattle Calves Sheep Goats

TODAY	785	534	79	129
LAST THURSDAY	592	671	85	153
LAST YEAR	993	523	202	212

**CATTLE:** Small supply slaughter steers 1.00-1.50 higher; slaughter heifers firm to 1.00 higher; cows fully steady, instances 50 higher; bullocks not tested; few bulls steady. Supply included 34% steers and 51% cows.

**SLAUGHTER STEERS:** Choice 2-3 few 4 1100-1425 lb 71.50-74.00, few 74.00-74.60; few Choice 2 1150-1425 lb 74.75-76.50; one lot high Choice and Prime 3 1275 lb 75.75; Select and low Choice 2-3 1150-1450 lb 67.50-70.75.

**HOLSTEINS:** Choice 2-3 1350-1500 lb 59.25-61.50, couple lots 1525-1550 lb 57.00-58.50; Select 1-3 1150-1450 lb 55.50-60.00.

**SLAUGHTER HEIFERS:** Choice 2-3 950-1210 lb 65.50-70.25; couple lots Choice and Prime 3 1190-1225 lb 71.50-72.75; few Choice 2-3 830-930 lb 64.00-68.50.

**COWS: LOW DRESSING BULK HIGH DRESSING** Breaking Utility & Commercial 2-3 46.00-49.00 49.00-50.00. Commercial 3-4 43.50-45.50. Cutter & Boning Utility 1-3 44.00-45.50 45.50-49.00 49.00-50.75. Canner & low Cutter 1-2 39.00-41.00 41.00-45.00.

**BULLS:** Yield grade 1 1300-2000 lb 62.50-67.00; Yield grade 2 1050-1600 lb 58.75-62.50.

**CALVES:** Vealers steady. Demand good for Holstein bulls to return to farm. **VEALERS:** Few Choice 150-365 lb 92.00-110.00; high Good and low Choice 200-390 lb 69.00-80.00, 80-110 lb 50.00-60.00; Standard and low Good 65-90 lb 40.00-50.00.

**RETURNED TO FARM:** Bulk 95-115 lb Holstein bulls 140.00-155.00, few 155.00-162.00, 80-90 lb 80.00-125.00; small frame 80-115 lb 50.00-90.00; few 90-115 lb Holstein Heifers 60.00-100.00.

**SHEEP:** Slaughter lambs and slaughter ewes fully steady.

**WOOLED LAMBS:** Choice 2-3 90-105 lb 64.00-66.00, couple 70-85 lb 82.00-92.00, with a few 50-65 lb 100.00-117.00; few Choice 20-55 lb New Crop Lambs 125.00-170.00.

**SLAUGHTER EWES:** Few Choice 2-3 33.00-48.00; Utility and Good 2-4 18.00-30.00.

**GOATS:** All Goats sold by the Head **Billies:** Large 82.00-87.00, few 97.00-112.00. **Nannies:** All weights 45.00-72.00. **Kids:** Good and Choice 35.00-45.00; Utility 20.00-34.00.

*Because of recent inclement weather, several markets indicated reduced sales and several were unavailable.*

**Notice:** Because of severe weather, market not updated.

**Lancaster County Weekly**  
 Lancaster, Pa.  
**Friday, January 21, 1994**

This Week	Cattle Calves	2320	1420
Last Week	Cattle Calves	2650	1650
Last Year	Cattle Calves	2900	1470

**CATTLE:** Supply included 41% slaughter steers, 5% slaughter heifers, 34% cows, 3% bulls, with the balance feeders.

**SLAUGHTER STEERS:** Choice 2-3 few 4 1100-1450 lb 70.25-64.50, few 73.50-74.25; High Choice and Prime 2-4 1150-1425 lb 73.50-75.25; Choice 3 few 4 1450-1500 lb 67.00-71.00, few 1550-1625 lb 64.00-67.50; Select and low Choice 2-3 1100-1425 lb 66.75-70.50, 1425-1550 lb 63.00-69.00.

**HOLSTEINS:** Few High Choice and Prime 2-3 1250-1460 lb 62.00-64.00; Choice 2-3 1250-1630 lb 60.00-63.75; 10 head Choice 3 1665-1825 lb 60.00-62.25; few Select and Choice 2-3 1690-2120 lb 52.00-58.00; Select 1-3 1250-1550 lb 56.00-60.00.

**SLAUGHTER HEIFERS:** Choice 2-3 950-1335 lb 65.00-69.00; few Choice 2 1000-1400 lb 69.75-71.50; Select 1-3 925-1150 lb 61.50-65.25.

**COWS: LOW DRESSING BULK HIGH DRESSING** Breaking Utility & Commercial 2-3 46.00-49.00 49.00-50.50 Commercial 3-4 42.00-46.00 Cutter & Boning Utility 1-3 44.00-45.00 45.00-48.50 48.50-50.00 Canner and low Cutter 39.00-42.00 42.00-44.75.

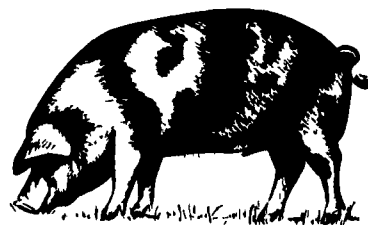
**BULLOCKS:** Choice 2-3 1150-1425 lb 68.50-74.50; Select 1-3 1100-1400 lb 62.50-67.00.

**BULLS:** Yield grade 1 1200-2000 lb 62.75-70.00, 5 head 72.00-76.50, with four head 1655-1835 lb 80.00-81.00; Yield grade 2 1050-1650 lb 57.00-63.00.

**CALVES:** Vealers steady. Demand good for Holstein bulls and heifers to return to farm.

**VEALERS:** Few Choice 180-330 lb 85.00-98.00; high Good and low Choice 160-480 lb 67.00-85.00, 80-115 lb 50.00-60.00, one lot 105 lb 67.00; Standard and low Good 60-85 lb 30.00-50.00.

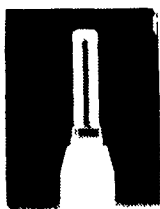
**RETURNED TO FARM:** Bulk 90-120 lb Holstein bulls 140.00-175.00, several 175.00-186.00; small frame 95-120 lb 100.00-146.00, 80-90 lb 65.00-114.00. Few 90-120 lb Holstein heifers 170.00-213.00, few 80-85 lb 157.00-170.00; small frame 90-115 lb 105.00-170.00.



**B&R CATTLE CO.**  
 RD 1, Marietta, PA 17547  
 Office Phone: (717) 653-8164  
**Specializing in Stockers & Feeders**  
**JOHN BOWMAN**  
 Ph. (717) 653-5728  
**RON RANCK**  
 Ph. (717) 656-9849

**LEBANON VALLEY LIVESTOCK MARKET, INC.**  
 1 mile East of Fredericksburg along Rt. 22  
**PHONE JONESTOWN 865-2881**  
 Flea Market Auction every Tuesday at 12:30, Tools, Eggs, Produce, etc.  
 Buyers & Sellers Welcome

**Replace Your Bulbs And Save Electricity WITH SCREW IN FLUORESCENT LIGHTS**



- Save Energy-Replaces up to 75 watt Incandescent
- Easy Installation
- Economical-Lasts 10 times longer than standard bulb
- Fewer Lamp Changes
- Lower Maintenance Cost
- Durable Polycarbonate Housing
- 45,000+ Hour Ballast
- 10,000+ Hour Lamp Life
- Air Cooled
- Water Resistant Ballast
- 120 Volt
- Ratcheted Brass Socket
- Medium Base
- Starting Temperature 0°

• Made in USA

5-7-9 Watt..... **\$5.49 each**  
 13 Watt..... **\$5.79 each**  
*New Sealed Center Mount!*

MODEL	WATTS	INCANDESCENT EQUIVALENT	INITIAL LUMENS
3000	5	25 WATTS	250
3200	7	40 WATTS	400
3500	9	60 WATTS	600
3700	13	75 WATTS	800
3900	22	90 WATTS	1300

Pennsylvania's Authorized Master Distributor

**Northeast agri systems** Northeast Agri Systems, Inc.  
 Flyway Business Park  
 139A West Airport Road  
 Lititz, PA 17543  
 Ph. (717) 569-2702  
 STORE HOURS: Mon. 11:30 to 4:30 Sat. 8:00 to Noon 24 Hr. 7 Day Repair Service  
 1-800-673-2580

**VINTAGE SALES STABLES, INC.**

**SALE TUESDAYS**

**10:30 A.M.**

**SLAUGHTER CATTLE AUCTION — STEERS, BULLS, HEIFERS, COWS, FEEDER CATTLE**

**7:30 P.M.**

**CALVES, SHEEP, GOATS • GET CALVES IN EARLY — OUR STATE GRADER STARTS AT 1:00 P.M.**

**Selling Feeders Every Tuesday At Approx. 2 PM**

**FOR MORE INFORMATION CONTACT:**

**L. ROBERT FRAME, SR., PRESIDENT**  
 BUS (717) 442-4181 BUS (717) 768-8204  
 HOME (215) 458-8518  
**IRWIN MARTIN, FIELD REP.**  
 (717) 733-7434  
**KENNETH E. HERSHEY, FIELD REP.**  
 (717) 442-4874

**TRUCKING SERVICE AVAILABLE — LOCAL & LONG DISTANCE (RT. 30, 10 MILES EAST OF LANCASTER IN PARADISE, PA)**



**HAY, STRAW & CORN — SALE —**  
 Please Note New Sale Time!  
**Starting Jan. 3**  
**Sale Starts 10 AM**  
**Every Friday At 10 AM**

**GREEN DRAGON MARKET & AUCTION**  
 RD No. 4 Ephrata, Pa. 717-738-1117  
 1 mile North of Ephrata on N. State St.  
 Out of State Buyers - Cash or Certified Check Only