

JOE'S BATTERY & TIRE



**24 Hour
On The Farm
Tire Service**

AGRICULTURAL RADIALS

KLEBER TIRE CORPORATION: A MICHELIN TIRE CORPORATION DIVISION!!
For years Kleber has been the European leader in agricultural radials, both in original equipment and replacement sales. Now, that same technology is available in the East.

INTRODUCING A NEW FAMILY OF RADIAL FARM TIRES

A front/rear radial tire designed for heavy-high horse power tractors that can improve traction over 15%, while reducing soil compaction! Operating air pressure as low as 8 P.S.I. will dramatically boost your yields.

EXCLUSIVE BENEFITS BY DESIGN

What do we say when our customers ask us for the best farm tire we have? (After all, by now he has tried Goodyear, Firestone, Armstrong...). We have a new answer to that old question: Kleber (Pronounced Claybear) Here's why Kleber, a wholly-owned subsidiary of Michelin Tire Corporation has been making radial farm tires since 1952. In Europe (which is 85% radial), Kleber is number one and Michelin is number two in both original equipment and replacement farm tires. The immediate benefits farmers will have are:

1. Tremendous traction-after all, Kleber is a minimum of 28% deeper in non-skud. For example, a Kleber 18 4R38 is 64/32nds vs. 51/32nds on any commodity radial made in the U.S.
2. The exclusively patented innerlug system accelerates cleanout, reduced downtime and supplements traction.
3. The unique carcass and belt configuration allows directional stability on the highway even with center hitch equipment. After all, Kleber is designed for road use. It is, in fact, speed rated at 25 mph.
4. And last, in addition to the normal benefits of radials, Kleber's wear is so extended that we have product on main tractor application with ten years of service in 8,000 hours.

WHY KLEBER RADIAL FARM TIRES?

- Lowest Cost per hour
- Highest traction - wet or dry
- Quietest highway transport
- Smoothest ride - no bounce
- Greatest fuel economy
- Most stable center hitch haul
- Lowest uniform soil compaction
- Fastest wet soil clean out

WHAT ARE THE UNIQUE FEATURES THAT MAKE KLEBER HEAD AND SHOULDER ABOVE THE COMPETITION?

- Dual angle bead configuration to insure no slip rim grip
- Bead/sidewall/belt package that provides on/off highway stability
- Non-stretch belts that reinforce the premium bar depth while protecting the radial carcass from field hazards
- Advanced R-1W bar depth to provide extra traction and low cost/hour usage
- Non-stretch belt/carcass design to minimize soil compaction, eliminate pressure spikes and provide uniform wear pattern
- Total design/build techniques to insure stable no bounce ride with center hitch equipment at 45 KPH
- Noise/vibration engineering to optimize bar contour/spacing
- Close technical ties to all tractor manufacturers in the Western World insuring compatibility
- Extensive front wheel assist OE/replacement knowledge world-wide
- In-house research - development staff



3S



8S

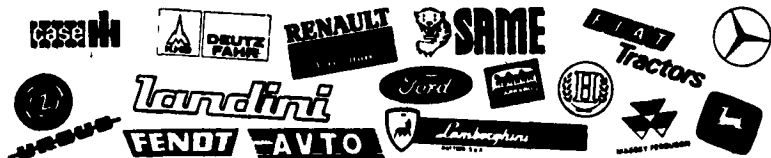


9S



15S

MAJOR ORIGINAL EQUIPMENT SUPPLIER FOR TRACTOR MANUFACTURERS



JOE'S BATTERY & TIRE

2225 Union Blvd., Allentown, PA 18103
1-800-437-4961

**Dealer
Inquiries
Welcome**

**Dealer
Inquiries
Welcome**

JOE'S BATTERY & TIRE

**Joe's
BATTERY
& TIRE**

**Introducing The
KLEBER Radial Farm Tire**



Exclusively
At Joe's
Battery
& Tire

Div. of Michelin
Tire Corp.

24 Hour On The Farm
Tire Service

FRONT AND REAR DRIVE TIRES

TIRE SIZE AND PRICES

13.6R 24 **	\$335	15.5R 38 **	\$499
14.9R 24 **	\$355	16.9R 38 **	\$526
16.9R 24 **	\$450	18.4R 38 *	\$530
14.9R 28 **	\$457	18.4R 38 **	\$610
16.9R 28 **	\$465	20.8R 38 *	\$695
14.9R 30 **	\$485	20.8R 38 **	\$805
18.4R 34 **	\$559	18.4R 42 **	\$660
13.6R 38 **	\$431	20.8R 42 **	\$865

* 8 Ply Rating

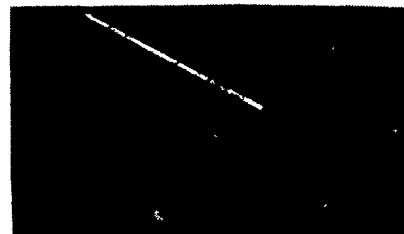
** 10 Ply Rating

SUPER 9 S
A high performance tire designed for high performance tractors. Faster ploughing speeds and higher load capacity. Unique tread bar design improves soil penetration giving optimum grip.

Call 1-800-437-4961

2225 Union Blvd.
Allentown, PA 18103

Calumet HOWLE



**32 Ft. Trail Pump
For Deep Lagoons**

**NEW SPREADERS IN STOCK
FOR IMMEDIATE DELIVERY**

FOR SALE OR LEASE

- Spreader Tanks - 2250 Thru 6500 Gallons
- Vacuum Tanks - 1500 Thru 4500 Gallons
- Earthen Pit Pumps
- Vertical Shaft Pumps
- Truck Mount Tanks - 2250 Thru 4500 Gallons
- Propeller Agitator
- Replacement Vacuum Pumps - 177 Thru 353 CFM's

SNOOK'S EQUIPMENT

RD 3, Box 84, Mifflinburg, PA 17844

PH: (717) 966-2736

ASK FOR ERNEST OR DEAN
"WE'RE HERE TO SERVE YOU"

SPECIAL OF THE WEEK



JD 3150 4x4 Hi-Lo
1540 Hrs.
\$21,500.00

- IH 1586, cab, air, duals.....\$12,000
- IH 1086, cab, air, duals.....\$11,900
- IH 1066, black stripe, cab, air, 2,400 hrs.....\$10,000
- IH 685 w/loader, shuttle shift.....\$14,250
- IH 574, diesel w/TA.....\$ 7,200
- IH 186 hydro, cab & air.....\$13,500
- MF 3680, 4x4, low hrs.....\$38,000
- MF 3545, cab & air, 4x4.....Coming In
- MF 2745, 24 spd., cab, air, duals.....Coming In
- MF 2705, 24 spd., cab, air.....Coming In
- MF 360, 4x4 w/loader.....\$14,000
- MF 270, 1,100 hrs.....\$ 8,900
- MF 245 w/loader, shuttle shift.....\$ 8,900
- MF 165, 8 spd. w/loader.....\$ 7,500
- MF 50C w/loader, shuttle shift.....\$ 8,000
- Ford 7600, 4x4, fenders, DP.....\$ 9,500
- AC 200, new motor & tires.....\$ 6,500
- White 2-60, 4x4.....Coming In
- JD 3150, 4x4, hi-lo.....\$21,500
- JD 2520, diesel, WF, SR.....\$ 8,000
- JD 2510, gas, 2 remotes.....\$ 4,500
- JD 1250 w/loader, 4x4.....\$11,000
- JD 420 w/loader.....\$ 3,200
- JD 350B loader.....\$ 8,500
- JD 60, tricycle.....\$ 1,500
- Deutz Allis 6260.....\$ 8,800
- Deutz DX160, 4x4, 4 post.....\$10,200
- JD AW 12' Disc.....\$ 650
- JD 111 10' disc.....\$ 1,500
- Taylorway 7' Soil Saver.....\$ 3,900
- 21' White Field Cultivator, Hyd. Fold.....\$ 1,750
- AC 1300 25' Folding Field Cultivator.....\$ 2,500
- (3) 12' Cultipackers.....\$ 700 to \$ 1,000
- Woods 10' Offset Mower.....\$ 2,500
- MF 880 4 & 5 btm. reset plows.....\$ 1,000 & \$ 1,200
- IH 450 auto plow, 3X.....\$ 1,750
- Oliver 348 3x auto plow.....\$ 1,250
- MF 13' Flex Head UH.....\$ 2,800
- MF 15' Flex Head.....\$ 1,900
- MF 20' Flex Head.....\$ 1,900
- IH 7 Shank Auto Reset V Ripper.....\$ 4,900
- 18.4x38 & 20.8x38 duals.....\$ 1,000
- 14' Transport Packer.....\$ 1,800
- Better Built 1500 Gallon Top Fill Spreader.....\$ 2,200
- NI 214 Spreader w/Endgate.....\$ 600

Financing Available

L & M BURKHOLDER

Between Brownstown & Rothsville
Ephrata, PA

717-859-2960 717-859-2712
Shop 717-859-6616