

M.M. WEAVER & SONS, INC.

SINCE 1936

Leola, PA 17540 Phone: (717) 656-2321

Located: 4 miles West of New Holland on Rt. 23, 1 1/2 miles Northeast of Leola on the No. Groffdale Rd., 1 mile on the right, opposite Groffdale Mennonite Church.



MASSEY FERGUSON

Tractors And Combines

Discover
CLAAS
THE HARVESTING SPECIALIST

USED COMBINES

1982 MF 850 With 15 Ft. Floating Head	\$23,000
1982 MF 860 With 15 Ft. Floating Head	\$22,000
1981 MF 860 With 15 Ft. Floating Head	\$22,000
1980 MF 550 With 13 Ft. Floating Head	\$21,000
1979 MF 550 With 13 Ft. Floating Head	\$16,000
1978 MF 540 With 13 Ft. Floating Head	\$11,500
NI 710 With 713 13 Ft. Grain Head	\$800
NI 843 N 3 Row 30" Quick-Tach Corn Head	\$1,200

USED TRACTORS

MF 3660-4, 140 HP, 814 Hrs.	\$52,000
MF 3525-2, 110 HP, 2882 Hrs.	\$18,500
MF 390 Tractor, 70 HP, 750 Hrs.	\$16,000
MF 1085, 82 HP, 3980 Hrs.	\$7,500
MF 1080, 82 HP, 5516 Hrs.	\$5,000
MF 1030-2, 26 HP, 232 Hrs.	\$8,700
MF 1035-2, 31 HP, 185 Hrs.	\$7,800
MF 1045-2, 35 HP, 262 Hrs.	\$7,900
MF 30E With Loader, 668 Hrs.	\$19,500
MF 265, 65 HP, Diesel	\$9,000
IH 350 Tractor, 42 HP, Rebuilt	\$2,900
Ford 9N Tractor	\$1,500
MF 285 82 HP	\$5,900

Demo - MF 1035-4	\$11,800
New - 1016 Loader Installed	\$2,900
Demo - 1017 Backhoe	\$3,900
	\$17,600

MF 1030 - 4 w/1016 Loader	\$9,000
3 Pt. Woods Mower w/Vac Trailer-System	\$1,200
Post Hole Digger	\$675
Rea Blade	\$300
	\$11,175

HAY EQUIPMENT

MF 128 Baler	\$2,200
Demo Vicon 1511E 5x6 Round Baler	\$9,900
Used Vicon 1211 E 4x5 Round Baler	\$6,500
Demo Vicon 321 Disc Mower Conditioner	\$12,500
Deppo Vicon 216 7 Ft. Disc Mower	\$3,900
Vicon KM240 Discbine, Parts	\$800
Teagle Bale Shredder	\$1,900
Vicon RS740 Tedder 24 Ft.	\$4,500
Vicon KM281 Mower Conditioner	\$6,500
Vicon 321 Mower Conditioner	\$7,500
New Holland #853 Round Baler	

PLOWS & TILLAGE

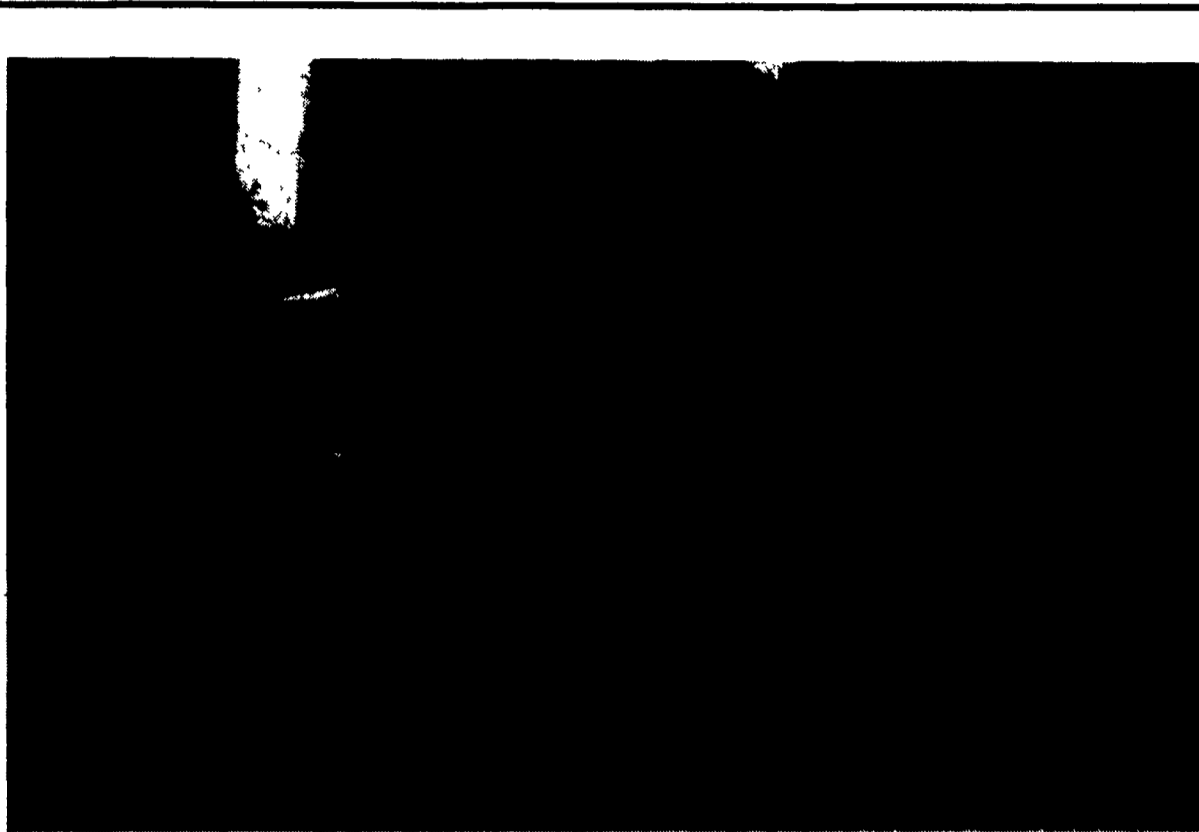
JD 10 Ft. Disc	\$800
M&W 5 Tooth V-Ripper	\$5,700
Vicon 18 Ft. Field Cultivator	\$6,900
MF 2-16 Spring Trip 3 Pt. Plow	\$650
Yetter 3 Pt. Rotary Hoe	\$2,695
Pequea 6 Row Cultivator	\$2,100

MANURE & FEED MIXER EQUIPMENT

SFM Liquid Spreader, 1100 Gal.	\$3,900
IH 595 Tandem Spreaders	\$3,900
NI 364 Tandem Spreader	\$4,500

ROTARY CUTTERS & EQUIPMENT

Hinicker Brady 12 Ft. 1000 RPM Shredder	\$5,500
Woods 60 HP Rated 8 Ft. 3 Pt. Blade	\$650
7 Ft. 3 Pt. Scraper Blade	\$305
Brady 7 Ft. Flail Chopper	\$2,500
Danuser 3 Pt. Post Hole Digger	\$680
Shaver 3 Pt. Hydraulic Post Drive	\$2,500

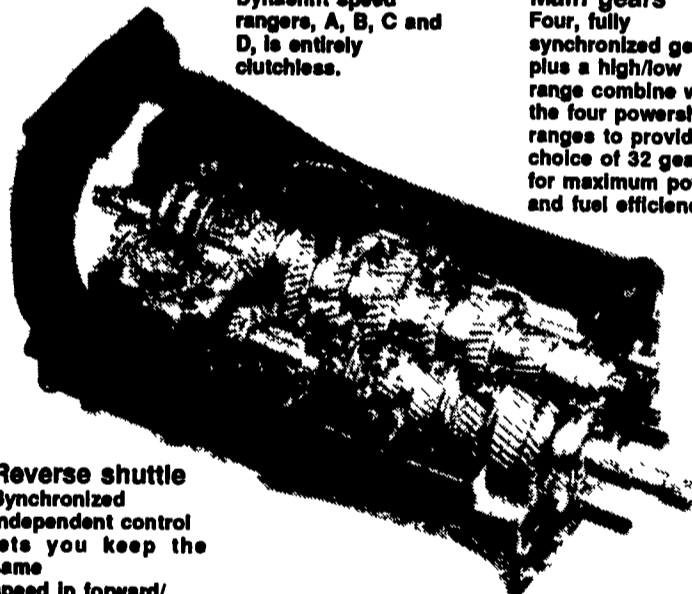


New Dynashift™ gives you the best features of both a manual and power-shift transmission.

Dynashift gives you 32 forward and 32 reverse gears by the unique combination of a 4-speed power-shift with an 8-speed synchronized gearbox and a synchronized forward/reverse shuttle.

Powershift unit
Shifting through four Dynashift speed ranges, A, B, C and D, is entirely clutchless.

Main gears
Four, fully synchronized gears, plus a high/low range combine with the four powershift ranges to provide a choice of 32 gears for maximum power and fuel efficiency.



Reverse shuttle
Synchronized independent control lets you keep the same speed in forward/reverse operations.

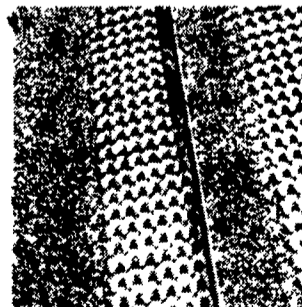


MASSEY FERGUSON

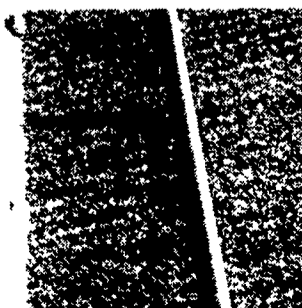
COMBINING SLOPES — THE MF 3-D CLEANING SYSTEM



MASSEY FERGUSON



Normal cleaning across slopes



3-D in operation

With the MF-3-D cleaning system, the crop is distributed evenly across the full width of the sieves, performance remains stable and output maintained.

The 3-D cleaning system provides dynamic slope compensation which means that the upper sieve moves sideways against the slope of the hill. The degree and direction of these movements depend on the inclination of the slope. Quick reaction and of course equal performance in any direction on slopes of up to 20%.

With the MF 3-D system you can operate at the same speed on slopes as on flat land. Daily performance can be maintained.