

Don't gamble with your modern, high-powered, high priced engine!
When you need engine machine work performed--

- We at **Rutt's Machine Shop, Inc.** have:
- Well maintained, State of the Art, tooling and equipment
 - Length standards traceable to NIST
 - Temperature controlled work environment for accuracy
 - All work is done or directly supervised by ASE Certified Technicians
 - 96 years combined experience in our work force
 - Special machining performed by Journeyman Toolmaker
 - Large data base of engine specifications (We don't guess)
 - Large supply of engine parts available
 - Pick-up and delivery service available

COMPLETE
BLOCK-HEAD-CRANK-ROD RECONDITIONING
"Quick Service on Flywheel Grinding"

Call for details (717) 367-3011



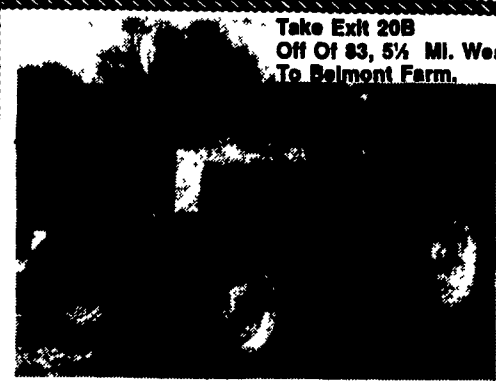
RUTT'S MACHINE SHOP, INC.
2329 (Rear) South Market Street
Elizabethtown, PA 17022-9793



We specialize in agricultural and industrial engines



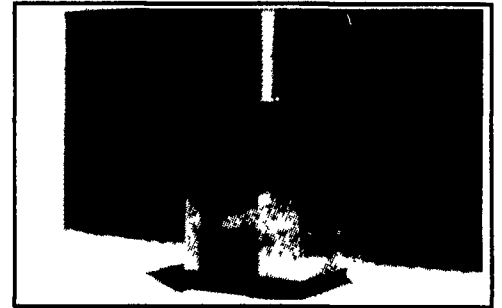
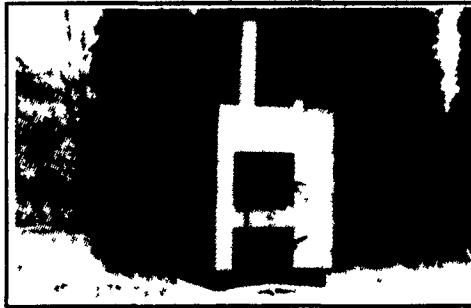
Haybuster H-1100
Mulch Grinder
Electro-Hydraulic Sensor,
Very Good Condition
\$15,000
(717) 866-7313



Take Exit 20B
Off Of 83, 5 1/2 Mi. West
To Belmont Farm.
JD 730
Standard, Diesel Pony Start,
Exceptionally Clean,
Mid-West Example
\$4,000
410-833-9091

MAHONING OUTDOOR FURNACES

"The Natural Way to Heat Your Home"



Efficiency Rating 83% to 85% - Cut Emissions by 90%
3 Year Warranty Except Electrical Components (1 Year) — 35 Years Heating Experience
PROUDLY BUILT IN CLEARFIELD COUNTY, PENNSYLVANIA

FUEL USED IN
STANDARD UNIT:
WOOD & COAL &
WOOD BY-PRODUCTS
(SAWDUST, PAPER, ETC.)

FUEL USED IN
MULTI-FUEL MODEL:
SAME AS ABOVE
INCLUDING OIL, PROPANE,
NATURAL GAS

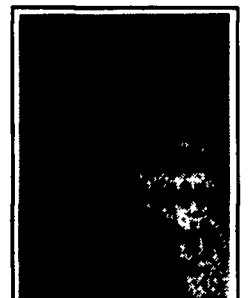
SIX SIZES:

Model 100Sboth supply up to 100,000 BTU's per hour	100MF	24 inch long fire box
Model 200Sboth supply up to 200,000 BTU's per hour	200MF	36 inch long fire box
Model 300Sboth supply up to 300,000 BTU's per hour	300MF	48 inch long fire box
Model 400Sboth supply up to 400,000 BTU's per hour	400MF	60 inch long fire box
Model 500Sboth supply up to 500,000 BTU's per hour	500MF	60 inch long fire box
Model 1-millionSboth supply up to 1,000,000 BTU's per hour	1-millionMF	60 inch long fire boxes

TODAY'S MAHONING OUTDOOR FURNACE WILL HEAT YOUR HOME, BARN,
POOL, BUSINESS, GREENHOUSE, & DOMESTIC DRINKING WATER TOO!
WE CAN CUSTOMIZE A UNIT TO FIT YOUR PERSONAL NEEDS!

Safe • Efficient • Durable
Look at what makes the Mahoning Outdoor Furnace a great purchase...
CLEAN. All dirt, dust, fuel and fire is outside. No chance of chimney fire or flue fire.
ELIMINATES AIR POLLUTION IN THE HOME. Smoke, fuel odors and other causes of allergies are outside the home.
SAFE FOR MOBILE HOMES. Eliminates danger that other furnaces contained in a mobile home can cause.
NO DANGER OR EXPLOSION. This is a zero pressure furnace.
ENCLOSED COMPONENTS. The circulation pumps and electrical connections are enclosed in an insulated cabinet on the back of the Mahoning Outdoor Furnace.
ADAPTABILITY. Install our furnace in any forced air heating or hot water system.

All Mahoning Units Come Installed with Grates Including An External Shaker Handle



The only outdoor furnace made with a Catalytic Combustor.

- Mahoning Catalytic Combustor Will Help in the Following Ways:
1. Burn one cord of wood which equals 166 gallons of oil.
 2. Your fuel source becomes enormous inexhaustible and poses few risks to public safety.
 3. Over all efficiency of 85%, which means the heat no longer goes up the chimney!
 4. You get more heat from a log compared to the non-cat. furnace.
 5. More burn time - less reloading time!
 6. Zap 90% of pollutants, made from fire source.
 7. Saves you a lot of money!
 8. User friendly, emits no smoke!

Proudly Built in Clearfield County, Pennsylvania
MAHONING MANUFACTURING
Mahoning Outdoor Furnace Co.

RD 1, Box 250, Mahaffey, PA 15757

(814) 277-6675 - (814) 277-6675 Dealer Inquiries Welcome
- Call Your Local Dealer Today and Find Out How Mahoning Can Save You Dollars.

- | | | | |
|--|--|---|--|
| Clyde Aderfer
Mt Pleasant Mills
717-539-8456 | Bill Lantz
Aurora, West Virginia 26705
304-735-6635 | Odin Tree Farm (Harry Fox)
Coudersport, PA 16915
814-647-8784 | Randy's Repair Service
Mikcreek, WV 26280
304-336-8086 |
| William Stahl
Loyalsville, PA 17047
717-789-3244 | Stan Weneel
Barree, PA 16615
814-669-4568 | Snow Garden Shop (Dean Snow)
Kams City, PA 16041
412-445-2765 | Walter Simmons
Brandywine, WV 26802
304-249-8206 |
| Bauer Farms
Lucinda, PA 16235
814-744-8400-800-852-2116 | Tim Stairs
Somerset, PA 15501
814-443-4195 | Dave Scott
Ortisonia, PA 17243
814-447-5469 | Mark Nofs
Berryville, VA 22611
703-965-2744 |
| Clarke Plumbing & Heating
Clearville, PA 15535
814-784-5716 | Mike Hollenshead
Needmore, PA 17238
717-485-4939 | Merrill Stains
Three Springs, PA 17264
814-448-3647 | Kevin Hoffman
Hadley, PA 16130
814-786-9382 |
| Charles Heating
Clearfield, PA 16830
814-765-8833 | R & B Industries
Shipperville, PA 16254
814-782-3332 | Gary's Inc.
Falls Creek, PA 15840
814-371-4865 | George Duncan
Millville, PA 17846
717-458-4637 |
| Sleepyhead Power Equipment
Brookville, PA 15825
814-649-3200 | Brinka Plumbing & Heating
Glen Campbell, PA 15742
814-846-7753 | Clarke Heating Service
Ligonier, PA 15658
412-238-5122 | Charles Bowman
Lebanon, PA 17046
717-273-8332 |
| McNamara Heating
Meadville, PA 16335
814-724-8718 | Roger Hartle
Grove City, PA 16127
412-458-6645 | Corle Heating
Imier, PA 16855
814-278-3065 | Tony Liller
Lumberland, MD 21502
301-777-9686 |
| Henry Kinsinger
Oakland, Maryland 21550
301-334-8510 | | Dave Saunders
Gillett, PA 16925
717-596-2363 | |

USED TRACTORS

- | | |
|---------------------------------------|--------------------------------|
| JD 4650, 4WD, cab & air | JD 5020 |
| (3) JD 4450, MFWD, power shift, sharp | JD 4520, power shift |
| JD 4320 | JD 4020, real sharp |
| JD 2950, 4WD w/260 loader | Case IH 7110, 2WD, cab & air |
| JD 2555, 4WD, cab & air | IH 5088, cab & air |
| JD 2550 | IH 1466 w/cab |
| JD 2350 | IH 1086, cab & air |
| JD 1050 w/470 hrs. | IH 966 |
| JD 4440, power shift, cab & air | IH 684 w/2250 loader |
| JD 4440, cab & air | IH 84 hydro |
| JD 4240, cab & air | IH 656, gas |
| JD 4040, cab & air | IH 544, diesel |
| JD 2940, 4WD | IH 384, power steering, diesel |
| JD 2840 w/loader | IH 826 |
| JD 2640 w/loader | IH 1486 cab & air, sharp |
| JD 2240 | IH 595, 650 hours, like new |
| JD 2040, diesel | Case IH 245, MFWD, like new |
| JD 4430, Cab & air | Ford 5610, sharp |
| JD 4230, cab & air, power shift | Ford 5000, diesel |
| JD 4230, cab & air, quad | Ford 4000, gas |
| JD 4030 w/158 loader | MF 35 |
| JD 4030, gas | MF 231, new |

Case IH 5140, MFWD, cab & air, like new

INDUSTRIAL

- | | |
|-----------------------------|---|
| JD 310 TLB w/cab, excellent | Ford 1710 TLB, 4WD |
| NH 785 skid steer | MF 200 diesel crawler loader, 4 in 1 bucket |
| Case 1835 skid steer | |
| Ford 1700, 4WD w/loader | |

USED PLOWS

- | | |
|--|--|
| Ford 3 btm. 3 pt. hitch, spring reset plow | JD 8 btm. 2800 varied width on land hitch plow |
| White 6 btm. 16" spring reset plow | IH 710 8 btm. 18" spring reset, on land hitch |
| IH consertill 10' | JD 2500 5 btm. 18" spring reset |
| JD 3 btm. roll over plow | JD 2500 6 btm. auto reset |
| JD 5 btm. on land hitch | |

USED COMBINES

New JD 643 corn head

- | | |
|-------------------|----------------------------|
| IH 844 4RW head | JD 215 flex head |
| 244 JD corn heads | JD 213 flex head |
| 444 JD corn heads | JD 3300, diesel, excellent |
| 443 corn head | JD 4400, diesel |

HAY EQUIPMENT

- | | |
|---------------------------------------|---------------------------------|
| NH 852 round baler | JD 346 wire baler w/thrower |
| NH 472 haybine | JD 410 round baler |
| Gehl 1850 round baler | NH 320 baler w/kicker, like new |
| JD 348 wire baler w/thrower, like new | JD 327 baler w/thrower |

MISCELLANEOUS

- | | |
|---|---|
| Gehl 800 recutter | JD 110 disc |
| JD 7000 4 row planter | JD 115 disc |
| Brillion 21' hyd. fold roller harrow | JD 16A fall chopper, very good |
| Kewanee hyd. fold 20' roller harrow, like new | Glenco soil finisher, 12' |
| NH 358 grinder mixer, excellent | AC Air Champ 8 row bean planter, no till |
| Gehl 95 grinder mixer | Rousseau radial arm ditch bank mower, 15' reach, like new |
| Kewanee 21' hyd. fold disc | |
| Taylorway 25' disc | |

D & R EQUIPMENT INC.

Rt. 579, Ringoes, New Jersey

(908) 782-5082