

35 TRUCKS & TRAILERS

'69 Int truck, 2110 w/16' dump w/grain sides, tubeless radial tires on rear, asking \$3,500 1973 Int 1-ton truck w/304 engine, V-8, 4 speed trans, dual tires in rear, needs windshield, mileage is 3,238, \$800 (302)697-1951

6 ton high lift coal body on '72 Ford 900 717-265-9299

'71 Mack spreader truck w/ air slide pup trailer, \$14,000 410-556-6200

'83 Ford F250, super cab, 460 auto, towing package w/9' stake body, \$3,600 717-733-2873

'86 Chevy Custom C20, HD, 3/4 ton, 350 auto, PB, PS, AM-FM, 8,600 GVW, red, 66,000 miles, 1 owner, excellent condition, \$7,800 717-733-2873

'86 Chevy Scottsdale C10, 5 passenger Suburban, 350 auto, PB, PS, cruise, tilt, air, AM-FM cassette stereo, red & tan, 62,000 miles, local 1 owner, excellent condition, \$7,800 717-733-2873

'88 Ford XLT E150 8 passenger van, 302 EFI, auto, PS, PB, PW, PDL, cruise, tilt, dual air, privacy glass, red & white, local 1 owner, like new, \$9,200 717-733-2873

'89 Chevy Beauville 8 passenger van, 350 FI, auto, PB, PS, PW, PDL, cruise, tilt, dual air, privacy glass, red & white, 54,000 miles excellent condition, 1 owner, \$10,500 717-733-2873

'90 Ford XL F150, 300 6 cyl EFI, 5 spd, PS, PB, AM-FM cassette, dual tanks, Rally Whls, 45,000 1 owner miles, black, \$8,300 717-733-2873

'75 GMC Big Wheels, dry line spreader, \$18,000. 410-556-6200.

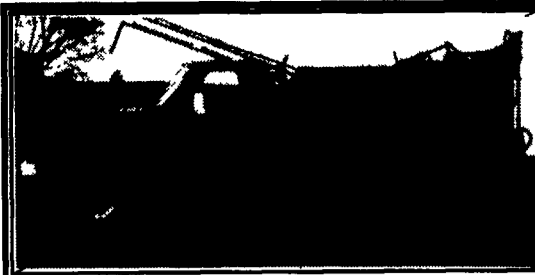
'79 Int'l V-8, 5 speed, 17,000 GVW, w/like new 20' midwest flatbed, w/4' steel bulkhead, (will separate) A cheap farm truck that runs and drives like new Asking \$5,500 (717)285-7039

'86 Chevy Suburban, 4x4, 6 2 diesel, 101,000 miles, black w/gray interior, barn doors, all power accessories, extra nice truck E-town (717)367-6080

'88 Chevy Scottsdale 2500, ext cab, 305 FI, 5 spd, PS, PB, AM-FM w/ utility boxes & ladder rack, 58,000 1 owner miles, \$8,975 717-733-2873

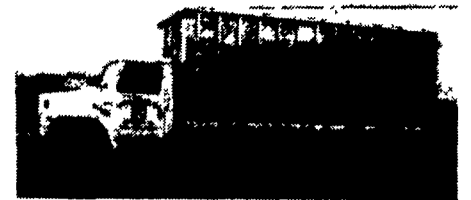
- 1992 Ford Thunderbird V6, AT, Loaded, Black, 58,100 Mi. \$9,900
- 1992 Chevy Lumina V6, AT, AC, CR, Tilt, PDL, AM-FM Cass., Blue, 53,000 Mi. \$8,800
- 1992 Pontiac Grand Am SE, 4 Dr, Quad 4, AT, AC, CR, Tilt, PDL, AM-FM Cass., Maroon, 51,600 Mi. \$9,400
- 1992 Mitsubishi Eclipse GS 16V, 4 Cyl. 5 Spd., Loaded, White, 37,900 Mi. \$10,900
- 1992 Ford Aerostar Ext. XLT, 7 Pass., V6, AT, Loaded, Blue/White, 38,600 Mi. \$12,900
- 1991 Chevy 1500 Silverado 4x4, V8, 5 Spd., Loaded, Black, 22,200 Mi. \$13,900
- 1991 Jeep Wrangler Softop 4x4, 4 Cyl., 5 Spd., AM-FM Cass., Red, 29,400 Mi. \$9,900
- 1990 Dodge Dynasty V6, AT, AC, CR, Tilt, PDL, AM-FM, Black, 66,900 Mi. \$5,900
- 1990 Ford Taurus SHO V6, 5 Spd., Loaded, Leather Int., JBL Stereo, Pwr. Sunroof, Maroon, 44,800 Mi. \$10,500
- 1989 Chevy Sport Van, 12 Pass., V8, AT, AC, AM-FM Cass., Gray, 67,900 Mi. \$6,900
- 1986 1/2 Nissan Ext. Cab XE, 4x4, 4 Cyl., 5 Spd., AM-FM Cass., Black, 95,600 Mi. \$6,600

Brubaker's Auto Sales
Myerstown, PA
717-866-5237



1979 Chev., TK. C30, 4x4, 350 Engine, 400 Gal. John Bean Sprayer, 40' Hydraulic Booms, Foam Marker.

Phone (717) 687-6535



1979 IH
18' Bulk Blower Truck
3208 Cat, New Clutch & Ejectors, 10 Speed, 50,000 GVW
Lebanon Co., PA
717-866-6015 7:30-5 Weekdays

OVER 90 TRUCKS Bobby Bernhart's **TRUCK WORLD**

PERFECT CONDITION	ABSOLUTELY PERFECT!	LOW MILEAGE
<p>69 Ford F950 10 Ton Dump \$2,500</p>	<p>CUMMINS DIESELS</p> <p>91 Dodge 1-Ton Cummins Turbo Diesel, Dually, Stick, A/C, LE Pkg., PW, PL, 26,000 Miles, #D115</p>	<p>89 Chev. K3500 Dually, 4WD, 454-4 Spd., A/C, Cruise, Tilt, Super Cab, Silverado #C146</p>
<p>87 International Diesel, 14 ft. box w/Roll Door, 5 Speed, 69,000 Miles #I102</p>	<p>89 Dodge D250 4x4 Cummings Turbo Diesel, Bed Liner, PS, PB, A/C, Both Hitches, Red w/Chrome Wheels</p>	<p>90 Ford F350 S.C. Dually, Diesel w/Auto O.D., XLT, PW, PL, A/C 68,900 Miles, #F164</p>

Mark VII - Pickups - Broncos - Bronco II - Stake Body - Crew Cab

Custom Vans - XLT - Grand Marquis - Marquis - Lynx - Topaz - Diesel Pickups - Mustang - T Bird

In Stock '94 FORD CREW CABS

(2) F250's
(2) '93 Turbo Diesel (in stock)

'93 FORD F350 XLT
Crew Cab, 7.3 Diesel, AT, Loaded, 23,000 Mi. #4032A
\$22,499

'91 FORD F150 XLT
4x4, V8, 5 Spd., Roll Bar, Black #P1684A
SPECIAL \$13,995

'92 FORD F150 XLT
6 Cyl., 5-Speed, 12,000 Miles, #P1732H
\$14,999

'93 FORD AEROSTAR XLT
AT, Dual A/C, Roof Rack #P1730
\$19,997

'93 FORD RANGER SPLASH
4.0 V6, A/C, Loaded, Only 4,000 Mi. #4135A \$13,999

'93 FORD AEROSTAR XLT
Extended, All Wheel Drive, 21,000 Miles, Like New #P1734 ... Special \$18,897

'87 FORD F150 4x4
Super Cab, 351 V8, AT, Fiberglass Cap, Very Clean #4175A
\$10,999

'91 FORD EXPLORER XLT 4 Dr.
AT, Cassette, Very Clean #P1736
Special \$17,600

'92 FORD F150 XLT 302 V8, 4 Spd., 1-Owner #1609A
..... \$14,989

'92 CHEVROLET C1500 Silverado
350 V8, AT, Loaded, 14,000 Miles #4117A
\$15,999

'92 DODGE DAKOTA
Magnum V6, AT, Bedliner, Loaded #4146A
\$11,999

'91 FORD AEROSTAR 6 Cyl., AT, AC, Low Miles #1828A
..... \$15,897.

'92 FORD CHEVROLET
350 V8, AT, Loaded, 14,000 Miles #4117A
\$15,999

'92 DODGE DAKOTA
Magnum V6, AT, Bedliner, Loaded #4146A
\$11,999

'91 FORD F150 XLT
Short Wheelbase, V8, AT #4152A
\$12,499

1989 FORD RANGER 4x4, 4 Cyl., 5 Spd., Cassette, #2007B
..... \$10,195

'92 FORD AEROSTAR XL
AT, AC, Air Bag, Low Mileage, Blue #4031C
\$15,996

Unless This Emblem Is On Your Car Or Truck You Probably Paid Too Much

SHEEHY LEBANON
SHEEHY FORD LINCOLN MERCURY INC.
20th & Cumberland St., Lebanon

9-9 Daily
9-5 Sat.
717-272-7671

Parts Dept. Open
Daily 8-5
Sat. 8-12
717-273-8168

Tempo - Cougar - Continental - Town Car - 4x4 - Box Van - Rangers