

# Winebark, Becker

(Continued from Page C8)

**RESERVE**  
Melissa Becker

**BREEDS**

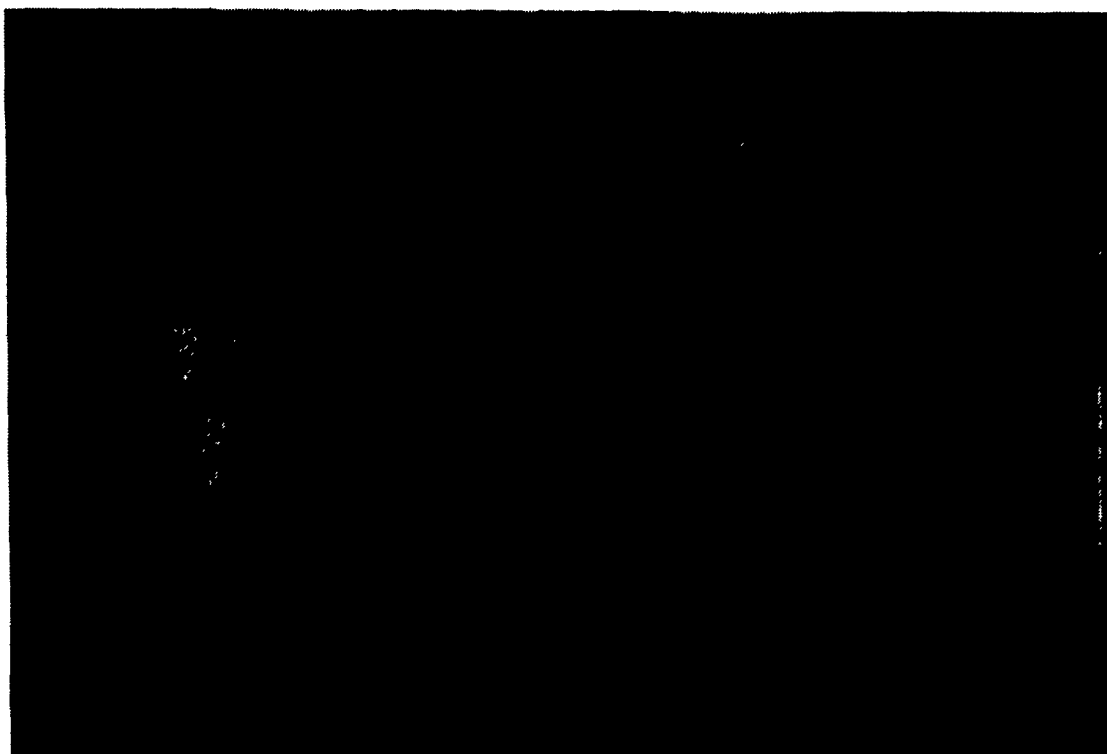
Berkshire: 1. Heather Jaslenski. 2. Sarah Kitzmiller. Chester White: 1. Roxanne Kirst. 2. Jennifer Flinchbaugh. 3. Joel Eline. Duroc: Bobbi Myers. 2. Tim Koslorek. 3. Jason Frantz. Hampshire: 1. Sara Miller. 2. Steve Lupey. 3. James Neutzel. Landrace: 1. Amy

Bollinger. 2. Julie Bond. 3. Trisha Berger. Poland Swine: 1. Scott Byers. 2. Maggie Holman. 3. Brian Eschbach. Yorkshire: 1. Jamie Risser. 2. Derick Bollinger. 3. Jeremy Mase.

**CHAMPION OVERALL**

Janine Winebark  
**RESERVE**  
Melissa Becker

## Metro's Outback Champion Calf



BELLEFONTE (Centre Co.) — "Metro's Outback 9C" was recently named reserve champion bull calf at the Canadian Western Agribition National Sales Show in Regina, Saskatchewan, Canada.

Outback was owned by the consortium Metro Ltd., directed by Jay Temchack of Bellefonte, Pa.; Joe Dearing of Harrison, Ark.; and Sandy Ridge Farm of Melbourne, Ark.

In photo, from left, Joe Dearing, Jay Temchack, and the Alberta Salers Queen.

## Figures Show Importance Of Poultry Industry

GEORGETOWN, Del. — Newly released information compiled by Delmarva Poultry Industry, Inc. (DPI), the nonprofit trade association working for the continued progress of the Delmarva Peninsula's poultry industry, shows the chicken industry continues to grow, providing considerable employment and increased economic contributions to the area.

Broiler production last year totaled 573,400,000 birds, up 4.5 percent from 1992, while the number of pounds produced rose 5.3 percent to reach 2,781,000,000 pounds. Each bird weighed an average of 4.85 pounds, which is

heavier than the national average.

Unlike many industries on the Delmarva Peninsula, the poultry industry remained strong in 1993. Close to 21,000 persons were directly employed in the industry, while thousands of others had jobs because of the poultry industry's presence. These 21,000 people earned more than \$368 million, a tremendous amount of money in a small area such as Delmarva.

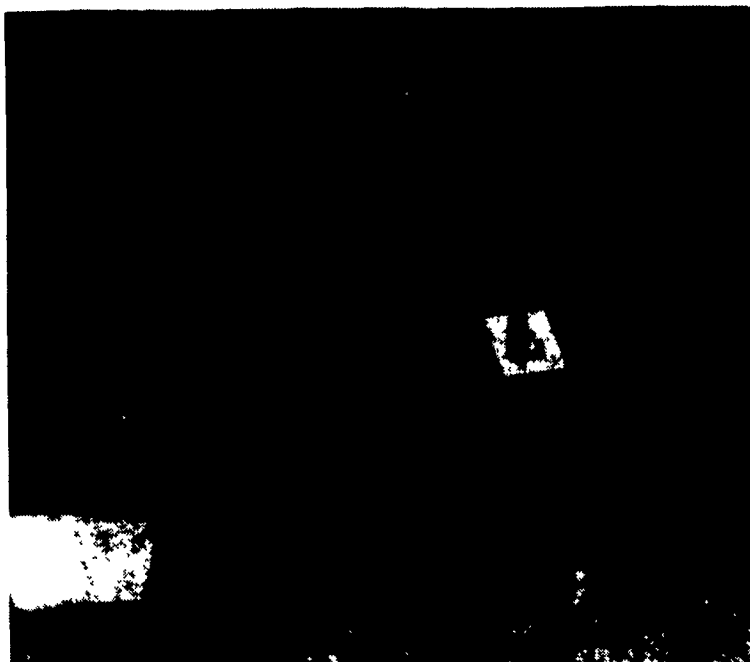
The poultry industry creates a built-in market for grain and soybean farmers on Delmarva. Most of the corn, soybeans, and sorghum raised by local farmers is used by the poultry industry. In

fact, it is necessary to bring in grain from other areas to meet the poultry industry's growing needs. The DPI 1993 figures show that 22.5 million bushels of soybeans, 65.3 million bushels of corn, and 1.59 million bushels of sorghum, with a farm value of \$290 million were used for poultry feed.

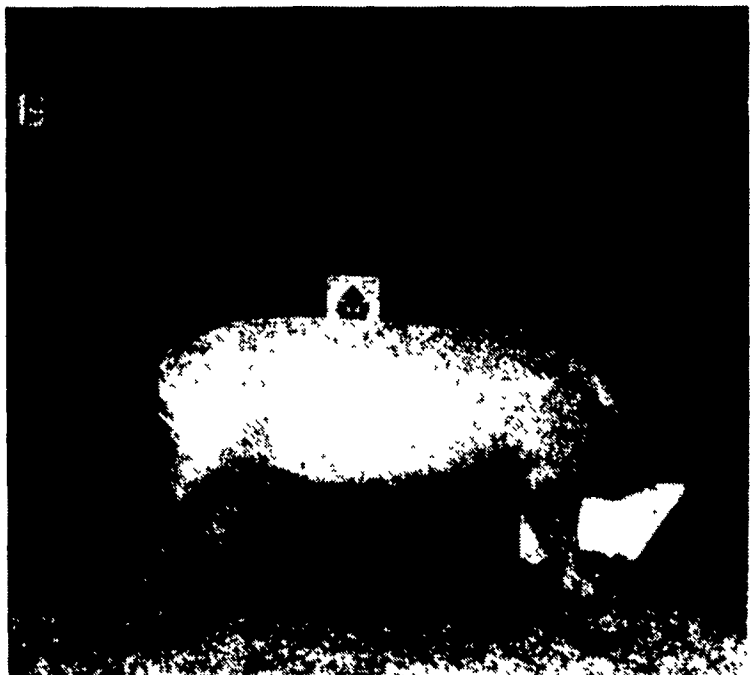
Processed and ready for market, the 573.4 million broiler chickens were valued at \$1.264 billion.

"These figures clearly demonstrate the tremendous impact of the poultry industry on the economy of Delmarva," said DPI President Walter W. Moorhead. "Our industry continues to expand, which benefits everyone on Delmarva."

Heather Jaslenski won champion Berkshire hog at the junior swine show.




Scott Byers won champion Poland China at the junior swine show.




Amy Bollinger picked up Landrace champion at the junior swine show.



Jamie Risser won champion Yorkshire at the junior swine show.



**SWANGER BROTHERS**  
MILWAUKEE "SELLATHON"  
DEMO TOOLS  
50% OFF



0407-8	12 VOLT CORDLESS W/2 BATT. KIT	\$159.99
6527	SUPERZALL	154.50
6507	VARIABLE SPEED SAWZALL	129.50
0234	1/2 MAGNUM DRILL	114.50
5371	1/2 MAGNUM DRILL	167.50
5397	3/8 HAMMER DRILL KIT	125.00
3107	RIGHT ANGLE DRILL KIT	192.50
0228	3/8" DRILL	93.00
6753	DRYWALL SCREWSHOOTER	77.50

WE STOCK A COMPLETE LINE OF POWER TOOLS, MACHINERY, WOOD AND METAL, MOTORS ACCESSORIES, ETC.

**SWANGER BROTHERS MACHINERY, INC.**  
Wholesale Distributors of New and Used Woodworking and Metalworking Machinery  
"Wholesale Distributors of New and Demo (at 50% off) Power Tools"

**116 North 3rd Street • Phila, Penna. 19106-1893**  
Phone: 215-627-0178    215-925-6139    215-440-9542  
FAX: 215-238-9577  
*"Our Prices Can't Be BEAT"*