

Fine Fleece Fanciers Weave Their Way To Victory

HARRISBURG (Dauphin Co.) — The Fine Fleece Fanciers of Bedford County captured top honors — and the most money for their shawl — at the Farm Show Sheep to Shawl contest. Held at the State Farm Show Complex in Harrisburg, the show is the largest indoor agricultural exhibition in North America.

Members of the Fine Fleece Fanciers include Karl Kaufman of Alum Bank, weaver; Laurie Bero of Alum Bank, spinner; Steven Bero of Alum Bank, spinner; Elissa Henderson of Schellsburg, spinner; Tracey Henderson of Schellsburg, shearer.

The team has competed at the Farm Show for two years. They have also done demonstrations at Bedford County Sheep and Wool Day and the Bedford County Fair.

Three teams competed in the contest this year. Hill and Hollow Handspinners, the second place team, includes Ginny Mutti of Alexandria, Huntingdon County, weaver; Jan Ott and Barbara Barlow of Orbisonia, Huntingdon County, spinners; Helen Clusman of McConnellsburg, Fulton County, spinner; and Tommy Junkin of Willow Hill, Franklin County, shearer.

The third team to compete in the contest, Woolie and Wild Weaving and Spinning, includes Harold Schwanger of Hershey,

Dauphin County, weaver; Lynn and John Zerphey of Halifax, Dauphin County, spinners; Sue Ellen Gates, Elizabethtown, Lancaster County, spinner; and Chris Herr of Camp Hill, Cumberland County, shearer.

The contest begins with each team shearing a sheep. The wool is carded and spun, then woven on a loom. Points are awarded for speed, shearing, spinning, weaving, design and team identification.

In addition to the premiums awarded to the teams, special awards are made for innovation of design, color and skill of the weaver, the quality of the workmanship and cooperative spirit of the three spinners within a team, the skill and handling of sheep by the shearer, and for the fleece used.

Immediately following the judging, the auctioning of the shawls created during the contest took place. The first place shawl was sold to M.H. Eby of Blue Ball and Sam Beegle of Sam Beegle Stables in Gap for \$450. The second place shawl went for \$300 to Robert Miller of Pleasant Valley Angus in Lebanon. The third place shawl was also sold for \$300 to Pete Barley of Palmyra.

The purpose of the Sheep to Shawl contest is to promote the sheep and wool industry in Pennsylvania. By providing an opportunity for regional craftspersons,

the evening's event not only educates the public on one of Pennsylvania's agricultural products, but also provides for an evening of fun and entertainment.

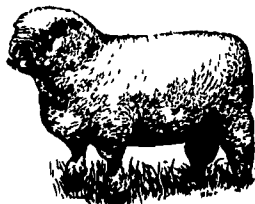
The event is sponsored by the Pennsylvania Department of Agriculture and the Pennsylvania Sheep and Wool Growers Association.



First place winners in the Sheep to Shawl Contest went to Fine Fleece Fanciers of Bedford County. Secretary of Agriculture Boyd Wolff is shown with the winning team.

- WOOL**
- 64's 70's & 80's Fine Combing: 1. Scott R. Calvert, Mercer; 2. Scott R. Calvert, Mercer; 3. Ken & Connie Scott, Pulaski.
- 60's 62's 1/2 Blood Combing: 1. Scott R. Calvert, Mercer; 2. Sheepberry Farms, Halifax.
- 56's 58's 3/8 Blood Combing: 1. Sheepberry Farms, Halifax; 2. Sheepberry Farms, Halifax; 3. Christine M. Calvert.
- 50's 54's 1/4 Blood Combing: 1. Dean Scot Sherwin, Mount Pleasant; 2. Shirley S. Shields, Latrobe; 3. David M. Calvert, Mercer.
- 46's 48's Low 1/4 Blood Combing: 1. Blake McKinney, York; 2. Sheepberry Farms, Halifax; 3. Sheepberry Farms, Halifax.
- Champion Commercial Farm Flock Fleece: 1. Blake McKinney, York.
- Reserve Champion Commercial Farm Flock Fleece: 1. Sheepberry Farms, Halifax.
- Merino Ram Fleece: 1. Scott R. Calvert, Mercer; 2. Ken & Connie Scott, Pulaski; 3. Scott R. Calvert.
- Merino Ewe Fleece: 1. Scott R. Calvert, Mercer; 2. Ken & Connie Scott, Pulaski; 3. Scott R. Calvert.
- Rambouillet Ram Fleece: 1. Ken & Connie Scott, Pulaski.
- Rambouillet Ewe Fleece: 1. Ken & Connie Scott, Pulaski; 2. Dean Scot Sherwin, Mount Pleasant.
- Corriedale Ram Fleece: 1. Michael Bowman, Lenhartsville; 2. Nichole Knepp, Mohnnton; 3. Michael Bowman, Lenhartsville.
- Corriedale Ewe Fleece: 1. Kelly Glaser, Limekiln; 2. Michael Bowman, Lenhartsville; 3. Michael Bowman, Lenhartsville.
- Dorset & Cheviot Ram Fleece: 1. David M. Calvert, Mercer; 2. Scott R. Calvert, Mercer; 3. David M. Calvert, Mercer.
- Dorset & Cheviot Ewe Fleece: 1. Stephanie J. Bowman, Lenhartsville; 2. Stephanie J. Bowman, Lenhartsville; 3. David M. Calvert, Mercer.
- Hampshire Suffolk Shropshire: 1. Steward Ebersole, York; 2. Steward Ebersole, York; 3. Christine M. Calvert, Mercer.
- Hampshire Suffolk Shropshire: 1. Christine M. Calvert, Mercer; 2. Christine M. Calvert, Mercer; 3. Scott R. Calvert, Mercer.
- Champion Breed Fleece: 1. Kelly Glaser, Limekiln.
- Reserve Champion Breed Fleece: 1. Scott R. Calvert, Mercer.

- WOOL - NATURAL COLORED**
- White Fleece (60's & Finer): 1. Dean Scot Sherwin, Mount Pleasant; 2. Dean Scot Sherwin, Mount Pleasant; 3. Shirley S. Shields, Latrobe.
- White Fleece (58's & Coarser): 1. Sheepberry Farms, Halifax; 2. Sheepberry Farms, Halifax; 3. Dean Scot Sherwin, Mount Pleasant.
- Solid Black Brown/Gray Fleece (60's & Finer): 2. Shirley S. Shields, Latrobe; 3. Shirley S. Shields, Latrobe.
- Solid Black Brown/Gray Fleece (58's & Coarser): 1. Jo-Anny Trygg, Dillsburg; 2. Emily R. Bankert, Red Lion; 3. Emily R. Bankert, Red Lion.
- Nonsolid Colored Fleeces (60's & Finer): 1. Sheepberry Farms, Halifax; 2. Shirley S. Shields, Latrobe; 3. Dean Scot Sherwin, Mount Pleasant.
- Nonsolid Colored Fleeces (58's & Coarser): 1. Sheepberry Farms, Halifax; 2. Jennifer L. Finchbaugh, York; 3. Dean Scot Sherwin, Mount Pleasant.
- Champion, Natural Colored Fleece: 1. Sheepberry Farms, Halifax.
- Reserve Champion, Natural Colored Fleece: 1. Sheepberry Farms, Halifax.
- Grand Champion Fleece: 1. Blake McKinney, York.
- Reserve Grand Champion Fleece: 1. Kelly Glaser, Limekiln.
- EXHIBIT OF FIVE FLEECES**
- Fine & 1/2 Wool: 1. Ken & Connie Scott, Pulaski; 2. Scott R. Calvert, Mercer.
- Medium Wool: 1. Sheepberry Farms, Halifax; 2. Scott R. Calvert, Mercer; 3. David M. Calvert, Mercer.



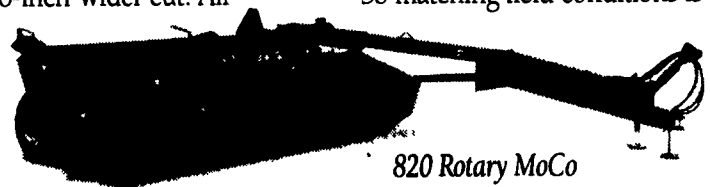
THE ALL-NEW **MoCo's** BY JOHN DEERE



NOBODY DOES HAY BETTER

NOBODY CUTS HAY BETTER. An all-new John Deere-built, rotary cutterbar makes the 920 (above) and 930 MoCo's stronger and easier to maintain. The 820 Sicklebar MoCo (below) features a 5-bar reel, new guards, and a 9-foot 9-inch cut for a cleaner, 6-inch-wider cut. All three use an innovative 3-point suspension for unbeatable flotation.

NOBODY CONDITIONS HAY BETTER. You can beat the conditioning or simplicity. Choose John Deere urethane roll (sicklebar and rotary models) or V-tine impeller conditioning (rotaries only). All adjustments are made easily...many without tools. So matching field conditions is easy.



820 Rotary MoCo

SEE ONE OF THESE DEALERS FOR A DEMONSTRATION:

- | | | | | |
|---|--|---|---|--|
| ADAMSTOWN EQUIPMENT INC.
Mohnnton, PA
(near Adamstown)
717-484-4391 | CLUGSTON FARM EQUIPMENT
Needmore, PA
717-573-2215 | DUNKLE & GRIEB INC.
Mill Hill, PA
717-726-3115 | A.B.C. GROFF, INC.
New Holland, PA
717-354-4191 | LANDIS BROS.
Lancaster, PA
717-291-1048 |
| BARTON SUPPLY, INC.
Tunkhannock, PA
717-838-4011 | CLUGSTON AG & TURF, INC.
Chambersburg, PA
717-263-4103 | ENFIELD EQUIPMENT INC.
Whiteford, MD
301-452-5252 | GUTSHALL'S INC.
RD #2 Box 74-A
Loydsville, PA | LEHIGH AG EQUIPMENT
Allentown, PA
215-398-2553 |
| CARLYLE & MARTIN, INC.
Hagerstown, MD
301-733-1873 | DEERFIELD AG & TURF CENTER, INC.
Watsonstown, PA
717-538-3557 | EVERGREEN TRACTOR CO., INC.
Lebanon, PA
717-272-4641 | GUTSHALL'S INC.
Carlisle, PA
717-249-2313 | LONE MAPLE SALES & SERVICE
New Alexander, PA
412-668-7172 |
| CARROLL'S EQUIPMENT
Route 235
Dameron, MD
301-872-5553 | DUNKLE & GRIEB INC.
Centre Hall, PA
814-364-1421 | FINCH SERVICES-HANOVER INC.
Hanover, PA
717-632-2345 | KERMIT K. KISTLER INC.
7866 Kings Highway
Lynnport, PA
610-298-2011 | LOST CREEK IMPLEMENT
Oakland Mills, PA
717-463-2181 |