

National Grain Market
St. Joseph, Mo.

Wednesday, January 12, 1994

DAILY NATIONAL GRAIN SUMMARY WHEAT PRICES TURNED STRONGER, WEDNESDAY, IN REACTION TO JORDAN'S SUBSTANTIAL U.S. WHEAT PURCHASE AND INDICATIONS CHINA MAY REBID FOR U.S. WHEAT AFTER ALL. TRADERS ANTICIPATE TODAY'S USDA CROP REPORTS. CORN PRICES WERE PRESSURED BY PROFIT TAKING ON THE BOARD AHEAD OF THE USDA FINAL 1993 CROP PRODUCTION REPORT. SOYBEAN PRICES GAINED SLIGHTLY ON FUND BUYING AND GOOD DEMAND FROM THE CRUSH EXPORT MARKETS, LIGHT FARMER SELLING AND BARGE MOVEMENT PROBLEMS DUE TO ICE ON RIVERS. WHEAT 1 TO 5 CENTS HIGHER AND UP TO 17 CENTS HIGHER IN MINNEAPOLIS. CORN 1 TO 2 CENTS LOWER. SORGHUM 2 TO 4 CENTS LOWER. SOYBEANS 1 TO 2 CENTS HIGHER. WINTER WHEAT SEEDINGS FOR 1994 ARE ESTIMATED AT 50.6 MILLION ACRES, DOWN 2 PERCENT FROM 1993, THE LOWEST SINCE 1988. STOCKS ARE REPORTED AT 1.59 BILLION BUSHELLS, DOWN SLIGHTLY FROM DEC. 1, 1992. CHINA MAY STILL BE IN THE MARKET FOR U.S. WHEAT ADDED GOOD SUPPORT TO WHEAT PRICES. EXPORT DEMAND CONTINUED GOOD WITH JORDAN'S WHEAT ORDER. CORN PRODUCTION FOR 1993 IS AT 6.3 BILLION BUSHELLS, DOWN 9 PERCENT FROM NOVEMBER 1, 1993 BUT DOWN 34 PERCENT FROM 1992'S CROP. STOCKS IN ALL POSITIONS ON DEC 1, 1993, TOTALED 5.94 BILLION BUSHELLS, DOWN 25 PERCENT FROM 1992. PRICE LOSSES IN CORN WERE LIMITED, HOWEVER, ON REPORTS THE FRIGID WEATHER IN MIDWEST AREAS AND ICE WILL MAKE BARGE MOVEMENT ON RIVER ARTERIES DIFFICULT. SOYBEAN PRODUCTION IS REPORTED AT 1.8 BILLION BUSHELLS, UNCHANGED FROM NOV 1, 1993 BUT BELOW 1992'S 2.2 PRODUCTION FIGURE. SOYBEANS STORED IN ALL POSI-

TIONS ON DEC 1, 1993, TOTALED 1.55 BILLION BUSHELLS, DOWN 15 PERCENT FROM DEC. 1, 1992. HIGHER BEAN PRICES REFLECTED INCREASED EXPORT INTEREST AND FUND BUYING ON THE BOARD. BARGE MOVEMENT AND ICE PROBLEMS ON MIDWEST RIVER SYSTEMS ALSO ADDED TO PRICE UPTURNS.

EXPORT NEWS: USDA ACCEPTED FOUR BIDS TO SELL 200,000 TONNES HARD RED WINTER WHEAT TO JORDAN UNDER BEP FOR FEB/MAY SHIPMENT. USDA ACCEPTED ONE BID TO SELL 5,250 TONNES SOYLOIL TO TUNISIA UNDER BEP, FOR FEBRUARY SHIPMENT.

DATE CHANGE YEAR AGO TRUCK BIDS: 01/12/93 01/11/93 01/13/92 WHEAT: KANSAS CITY 3.98-4.00 DN 1-UP 1 3.85-3.86 MINNEAPOLIS TRUCK BID MAR 4.89 1/2 UP 17 3.96 PORTLAND 3.62-3.66 UP 5-4 4.37-4.40 ST. LOUIS 3.79-3.95 UP 2 4.00-4.03.

CORN, U.S. NO. 2 YELLOW: KANSAS CITY 2.99-3.02 DN 2-1 2.17-2.19 MINNEAPOLIS 2.84 1/4 DN 1 2.01 1/2 SO. IOWA 3.03-3.06 DN 1 2.12-2.13 OMAHA 2.85-2.86 DN 1-NC 1.99-2.02.

SOYBEANS, NO. 1 YELLOW: KANSAS CITY 6.92-6.96 UP 1 5.76-5.79 MINNEAPOLIS 6.64 3/4 UP 1/2 5.57 SO. IOWA 6.95-7.01 UP 2 5.67-5.73 C. ILL. PROCESSORS 6.88 3/4-6.97 3/4 UP 1/2 5.85-5.91

*TRUCK BIDS FOR KANSAS CITY, US NO. 1 HARD RED WINTER WHEAT, ORDINARY PROTEIN. MINNEAPOLIS, US NO. 1 DARK NORTHERN SPRING WHEAT, 14% PROTEIN. PORTLAND, NO. 1 SOFT WHITE WHEAT, ST. LOUIS, NO. 2 SOFT RED WINTER WHEAT.

FUTURES CLOSE: KANSAS CITY (MAR) WHEAT 3.84 1/4 UP 1 1/2 3.61 MINNEAPOLIS (MAR) WHEAT 3.94 1/2 UP 2 3.46 CHICAGO (MAR) WHEAT 3.87 3/4 UP 2 3.75 1/4 (MAR) CORN 3.04 3/4 DN 1 1/4 2.18 1/2 (MAR) SOYBEANS 6.93 3/4 UP 1/2 5.84.

EXPORT: BARGE OR RAIL, PORT OF NEW ORLEANS OR NORTH TEXAS GULF. NO. 1 HARD RED WINTER WHEAT ORDINARY PROTEIN 4.28 1/4 UP 1/2-DN 1/2 4.19-4.20 NO. 2 SOFT RED WINTER WHEAT 4.19 3/4-4.22 UP 2-3 4.27-4.28 NO. 2 YELLOW CORN 3.24-3.

24 1/4 UP 3-DN 1 1/4 2.38 1/2-2.40 NO. 2 YELLOW SORGHUM RAIL 5.51 DN 4 BARGE 5.64 DN 2 4.31-4.35 NO. 2 YELLOW SOYBEANS 7.21-7.22 UP 2 6.11-6.11 1/2 BIRD THIS REPORT A SERVICE OF U.S. DEPARTMENT OF AGRICULTURE, LIVESTOCK AND GRAIN MARKET NEWS, ST. JOSEPH, MISSOURI.

Pa. Grain

Monday, January 10, 1994
Report supplied by PDA

COMPARED WITH THE MARKET FOR LAST MONDAY, FOR SOUTH-EASTERN, CENTRAL, AND SOUTH CENTRAL PA: CORN AND OATS STEADY TO .10 HIGHER; WHEAT STEADY TO .15 HIGHER; BARLEY MOSTLY STEADY TO .20 HIGHER; SOYBEANS STEADY TO .12 HIGHER; BAR CORN STEADY TO 5.00 HIGHER. SOUTHEASTERN PENNSYLVANIA CORN NO. 2-Y RANGE 3.15-3.45, AVERAGE 3.31, CONTRACT FOR HARVEST 2.70-2.88; @WHEAT NO. 2 RANGE 3.90-4.22, FEW REPORTED 3.72, AVERAGE 3.99, CONTRACT FOR HARVEST 3.76-3.66; BARLEY NO. 3 RANGE 2.30-2.55, FEW REPORTED 2.65, AVERAGE 2.39, CONTRACT FOR HARVEST 1.85-2.00; OATS NO. 2 RANGE 1.65-1.85, AVERAGE 1.72; SOYBEANS NO. 1 RANGE 6.65-7.02, AVERAGE 8.84, CONTRACT FOR HARVEST 6.33-6.49; FEW REPORTED GR. SORGHUM #2 RANGE 2.86, AVERAGE 2.86; FEW REPORTED NEW EAR CORN RANGE 84.00-95.00, AVERAGE 89.07.

KIRKWOOD HAY AUCTION
Hay, Straw and Grain Auction
EVERY TUESDAY
11:00
Located Rt. 472 5 miles south of Quarryville or 6 miles north of Oxford corner of Rt. 472 and Noble Road.
Lloyd H. Kreider, Auctioneer
AU-000813L
No out of state checks

SOUTH CENTRAL PENNSYLVANIA

CORN NO. 2-Y RANGE 3.15-3.35, AVERAGE 3.26; @WHEAT NO. 2 RANGE 3.50-4.00, AVERAGE 3.60; BARLEY NO. 3 RANGE 2.00-2.40, AVERAGE 2.24; OATS NO. 2 RANGE 1.70-1.80, FEW REPORTED 1.50, AVERAGE 1.71; SOYBEANS NO. 1 RANGE 6.50-7.00, AVERAGE 6.67; NEW EAR CORN RANGE 80.00-90.00, FEW REPORTED 70.00, AVERAGE 81.43.

SOUTHEASTERN, CENTRAL & SOUTH CENTRAL SUMMARY CORN NO. 2-Y RANGE 3.15-3.45, AVERAGE 3.27; @WHEAT NO. 2 RANGE 3.50-4.15, AVERAGE 3.79; BARLEY NO. 3 RANGE 2.10-2.55, AVERAGE 2.35; OATS NO. 2 RANGE 1.60-1.85, AVERAGE 1.72; SOYBEANS NO. 1 RANGE 6.50-7.02, AVERAGE 6.78; NEW EAR CORN RANGE 74.00-95.00, AVERAGE 84.46.

CENTRAL PENNSYLVANIA CORN NO. 2-Y RANGE 3.15-3.30, FEW REPORTED 3.00, AVERAGE 3.22; @WHEAT NO. 2 RANGE 3.40-3.81, FEW REPORTED 4.10, AVERAGE 3.59; BARLEY NO. 3 RANGE 2.20-2.40, FEW REPORTED 2.96, AVERAGE 2.40; OATS NO. 2 RANGE 1.60-1.80, FEW REPORTED 2.00, AVERAGE 1.72; SOYBEANS NO. 1 RANGE 6.50-6.90, FEW REPORTED 7.25, AVERAGE 6.74; FEW REPORTED NEW EAR CORN RANGE 67.00-78.00, FEW REPORTED 90.00, AVERAGE 76.50.

WESTERN PENNSYLVANIA
CORN NO. 2-Y RANGE 2.65-3.40, AVERAGE 2.97; @WHEAT NO. 2 RANGE 3.35-3.74, AVERAGE 3.52; BARLEY NO. 3 RANGE 2.28-2.30, AVERAGE 2.29; OATS NO. 2 RANGE 1.40-1.67, FEW REPORTED 1.90, AVERAGE 1.53; SOYBEANS NO. 1, FEW REPORTED RANGE 6.72, AVERAGE 6.72; FEW REPORTED OLD EAR CORN RANGE 61.00-65.00, AVERAGE 63.00.

Eastern PA & NJ Poultry Report

Atlanta, Ga.
Tuesday, January 11, 1994

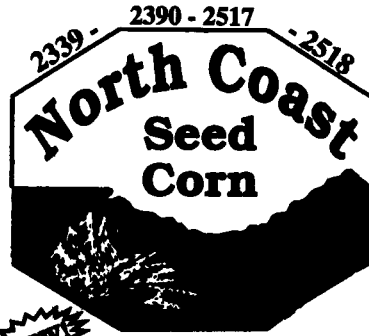
Trading levels continue at close to unchanged levels on light type fowl. Offerings are at least adequate for processing plants to run desired slaughter schedules. Availability of heavy hens are currently limited but movement is anticipated to increase as the week progresses. Undertone about steady.

LIGHT TYPE HENS CENTS PER LB., DAY OF NEGOTIATION, GENERALLY FOR SLAUGHTER WITHIN THE NEXT 10 DAYS RANGE MAJORITY AT FARM BUYER LOADING 1-2 CENTS/LB. FOB PLANT TOO FEW TO REPORT HEAVY TYPE HENS (7 POUNDS AND UP) * PRELIMINARY PRICE, CENTS PER LB., GENERALLY FOR SLAUGHTER THE WEEK OF 17-JAN-94 RANGE MAJORITY AT FARM BUYER LOADING TOO FEW TO REPORT FOB PLANT TOO FEW TO REPORT * WEIGHTS UNDER 7 LBS. SUBJECT TO DISCOUNT.

BOYDELL FARMS

302 Iona Road, Lebanon, PA 17042
Phone: 717-272-8943

DISTRIBUTORS FOR:
SILO QUEEN



- 502 - 109 Day
- 2307 - 107 Day
- 2400 - 110 Day
- 2525 - 117 Day

SOYBEANS

- Agri & North Coast**
8836 354,284
9139 Shore and
9329 The All New 374
9434



Also Avail. Resnick & Pella

ALFALFA

- ALL NEW 94MPR 84VWAP**, wetfoot, Erie
Buy 5 - get one FREE
Clover \$59.95 per 50
Climax Timothy \$29.95 per 50

OATS

Noble Porter Ogle Hercules

Baler Twine - Fertilizer

WHOLESALE & RETAIL

PARTS VALUE OF THE MONTH

Pre-Season **Service Savings**



BE READY FOR SPRING

GET A PERFORMANCE PLUS CHECKUP AND SAVE ON SERVICE WORK, TOO!

Look For Our **OPEN HOUSE** Jan. 24-29



SAVE 10% On Parts when work is done in our Service Center
plus **SAVE 10%** on labor

Get your tractor and equipment in top shape for the busy season and save at off-season prices.

Don't wait until the busy season hits. Get your tractor ready to roll now at special Pre-Season Service Savings.

Don't Delay...Call Doug Today
WE SHIP UPS

MESSICK FARM EQUIPMENT, INC.

Farm Equipment Is Our Business
RHEEMS EXIT, RT. 283, ELIZABETHTOWN, PA
Phone: (717) 367-1319, 653-8867 OR CALL TOLL FREE 1-800-222-3373
We Ship UPS

NEED TO CUT THE FEED BILL?

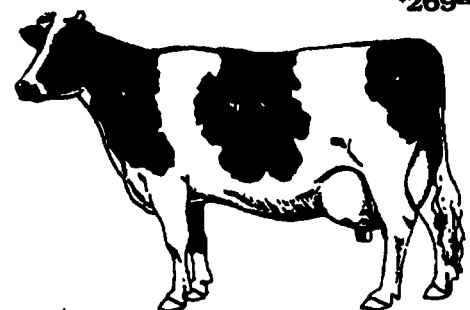
NEW DAIRY BLEND COMPLETE AND CONCENTRATE FEEDS

COMPLETE FEEDS

- #79516 Dairy Blend Flakes 16% All Natural \$169²⁴
- #79518 Dairy Blend Flakes 18% All Natural \$178²⁴
- #79520 Dairy Blend Flakes 20% All Natural \$187²⁴

CONCENTRATE FEEDS

- #51232 32% All Natural Protein Pellets \$233²⁴
- #51238 38% All Natural Protein Pellets \$255²⁴
- #50734 34% All Natural Protein Pellets w/Steam Flaked Soybeans \$269²⁴



Bulk Feed Available in 1 to 24 Ton Loads

Feed prices for Week of January 17 and Subject to Change Weekly with Grain Market
Includes 8 ton volume discount and cash discount of 2% due 15th following month. Deduct additional \$3.00 per ton if paid in 10 days



PENNSYLVANIA DEPARTMENT OF AGRICULTURE, LIVESTOCK & FISH MARKET
100 N. 2ND ST., PHILADELPHIA, PA 19106-3300

pennfield feeds