

Poultry Markets

LANCASTER FARMING STAFF

Everett R. Newswanger, Managing Editor
 Lou Ann Good, Staff
 Andy Andrews, Staff
 Vernon Achenbach Jr., Staff

NEWS CORRESPONDENTS
 Joyce Dupp, York County Seven Valleys (717) 428-1865
 Connie Leinbach, Berks County Boyertown (215) 367-4376
 Randy Wells, Indiana Marion Center (412) 397-2529
 Judith Patton, Union Millfinburg (717) 986-4770
 Gail Strock, Millin Belleville (717) 835-5675
 Linda Williams, Bedford Bedford (814) 823-5745
 Gay Brownlee, Somerset Salisbury (814) 662-2127
 Carol Pearce, Bradford Wysox (717) 265-6172
 Bonnie Brechbill, Franklin Chambersburg (717) 388-2916
 David Hiebert, Westmoreland Scottsdale (412) 887-5929
 Agnes Smith, Northampton Mt. Bethel (215) 588-8262
 Christine McCahren, Juniata Millintown (717) 436-2886
 Carol & Onalee Smith, Mercer Greenville (412) 588-6203
 C.J. Houghtaling, Tioga Middlebury Center (717) 376-2821
 Beth Miller, Cumberland Newville (717) 776-6511
 Sharon Schuchman, Maryland New Windsor (301) 635-2654
 Eva Martin, Maryland Smithsburg (301) 824-2106

Hackettstown Poultry & Egg

Hackettstown, N.J.
 Report Supplied by Auction Tuesday, January 11, 1994
 Report Supplied by Auction
 HEAVY FOWL .20-1.10.
 LEGHORN FOWL .45.
 BANTAMS .60-1.30.
 PULLETS .40.
 BUNNIES EACH 1.00.
 ROOSTERS .40-1.40.
 GEESE .10-.35.
 TURKEYS .90.
 DUCKS .40-1.15.
 RABBITS .80-1.60.
 PIGEONS 2.10.
 GUINEAS .85-1.30.

WHITE EGGS: EXTRA LARGE & JUMBO .50-.78; LARGE .45-.70; MEDIUMS .50-.55; PEEWEES .26.
 BROWN EGGS: EXTRA LARGE & JUMBO .49-.71; LARGE .34-.61; MEDIUMS .30-.40.

New York & Philadelphia Frozen Egg Report

Tuesday, January 11, 1994
 Prices continued their downward trend. Trading activity was about moderate as buyers took advantage of the lower priced offerings. Raw materials were fully adequate to satisfy further processors. Floor stocks were in good balance to fill current trade needs.
WHOLESALE SELLING PRICES (CENTS PER POUND IN 30 LB. CONTAINERS) TRUCKLOTS LTL (MIN. 25 CONT.) RANGE MOSTLY RANGE WHOLE 46-49 47-48 50-60 BLEND (T) TFEWR 58-68 WHITES 38-40 38-39 41-49 SUGARED YOLKS (MIN 43% SOLIDS) 56-59 57-58 60-66 SALTED YOLKS (MIN 43% SOLIDS) 52-55 53-54 56-61 (T) - WHOLE PLUS YOLK PLUS SWEETENER, GENERALLY 28-32% EGG SOLIDS.

N.E. Weekly Shell Egg Report

January 11
 Report Supplied by USDA
 PRICES PAID PER DOZEN GRADE "A" BROWN EGGS IN CARTONS DELIVERED TO RETAIL STORES:

	EX. LARGE	LARGE	MEDIUM	SMALL
MAINE	1.03	1.00	.78	.51
N. HAMP.	.96-1.00	.93-.97	.71-.75	.44-.48
MOSTLY	.98-.99	.95-.96	.73-.74	.46-.47
RHODE ISLAND	.99-1.03	.96-1.00	.74-.78	.47-.51
MOSTLY	.99	.96	.74	.47
VERMONT	1.07	1.05	.82-.85	
MOSTLY			.82	

Delmarva Broiler/Fryer Market

Wednesday, January 12, 1994
 Movement of ready-to-cook whole birds varied, but slowed overall. Seller offerings were adequate to fully adequate, instances well balanced to tight. Live supplies were moderate. Weights were mixed in a full range. Less than trucklot asking prices were unchanged at 52 to 64 cents. Trade sentiment was no better than steady and generally cautious in several quarters. In the parts complex, bone-in breasts were no more than adequate. Drums and thighs cleared well at several plants. Most other items were fully adequate to ample for a lackluster buying interest.

ESTIMATED SLAUGHTER OF BROILER/FRYERS IN DELMARVA (000)
 ESTIMATED ACTUAL AVG. WEIGHT ACTUAL AVG. WEIGHT 01/12 01/10 01/10 01/05 01/03 2,362 2,299 4.77 2,333 4.84
 *BROILER/FRYER CURRENT NEGOTIATED PRICES FOR IMMEDIATE DELIVERY INCLUDES MOSTLY MULTIPLE-DROP SHIPMENTS OF BRANDED AND WING TAGGED TO

NEW YORK CITY FROM DELMARVA BRANDED U.S. GRADE A RANGE 49-64, WEIGHTED AVERAGE 53.19 NO. OF BOXES 11,169 *7 of 9 plants reporting.

National Egg Market

Wednesday, January 12, 1994
NATIONAL EGG MARKET - AT A GLANCE: Prices were unchanged to lower for the large sizes in the Northeast, and unchanged on the balance of prices. The market tone was cautiously steady to weak with mediums in the most stable position. Cartoned egg movement was mixed across the full range, and deliveries continued to be disrupted by snow and ice covered roads in the Northeast. Demand was best where features were a factor. Supplies of large were adequate to ample and available, while medium supplies were adequate to instances closely balances. Breaking stock prices were unchanged to lower, and offerings were fully adequate for the unaggressive and light demand. Live hen offerings were at least adequate for the moderate at best demand, and the undertone was no better than steady.

Weekly New York Egg Market Northeast Quotes

From Fri., January 7 to Thursday, January 13

	FRI.	MON.	TUES.	WED.	THURS.
WHITE					
JUMBO	.78	.78	.78	.76	.75
EX. LARGE	.76	.76	.76	.74	.73
LARGE	.72	.72	.72	.71	.69
MEDIUM	.64	.64	.64	.64	.64
PULLETS	.50	.50	.50	.50	.50
OFF GRADE	.60	.60	.60	.59	.57
BROWN					
EXTRA LARGE	.84	.84	.84	.84	.84
LARGE	.80	.80	.80	.80	.80
MEDIUM	.61	.61	.61	.61	.61
OFF GRADE					
UNDERGRADES AND CHECKS	.26	.26	.25	.25	.24

BREAKING STOCKS: FRI. 42-44 LBS. 33.00-35.00, 48-50 LBS. 39.00-41.00, 50 LBS. AND UP 41.00-42.00; TUES. 48-50 LBS. 38.00-40.00, 50 LBS. AND UP 40.00-41.00; THURS. 42-44 LBS. 32.00-34.00, 48-50 LBS. 37.00-39.00, 50 LBS. AND UP 39.00-40.00.

Heinsey's Poultry

Roots, East Petersburg
 Tuesday, January 11, 1994
 PRICES PAID PER POUND, EXCEPT AS NOTED RANGE:
 Muscovy Ducks - Drakes .80 - 1.04.
 Muscovy Ducks - Hens .80 - .92.
 Pekin Ducks .50 - .64.
 Red Fowl 4-4.5 .30 - .54, Red Fowl 5-6 40 - .62.
 Crossbred Fowl 5-9 .20 - .58.
 Crossbred Roosters 4-6 .40 - .84.
 Crossbred Roosters 7-11 .40 - .82.
 Guinea Fowl .60 - .85.
 Banty Roosters 2.00 - 4.50 ea.
 Banty Hens .50 - 2.00 ea.
 Leghorn Hens .12 - .24.
 Silkies 2.85 - 4.75 ea.
 Geese 9-12 .22 - .44.
 Pigeons 2.00 - 2.40 ea.
 White Pigeons 3.00 - 3.75 ea.
 Rabbits 4-6 1.10 - 1.34, Rabbits 7-11 .90 1.22.
 Bunnies 1.00 - 3.50 ea.
 Guinea Pigs 2.00 - 4.50 ea.
 Goats 40.00 - 70.00 ea.
 Doves 1.50 - 3.50 ea.
 Pullets 4-6 .40 - .54.
 Total Coops Sold 634.

New England Shell Eggs

Wednesday, January 12, 1994
NEW ENGLAND: While cartoned egg prices remained unchanged, loose egg prices trended lower on the larger sizes. Trade sentiment was mostly steady. Demand was generally moderate, as adverse weather was improving retail business in some areas. Supplies were fair to instances long.
PRICES PAID TO PRODUCERS, CASES EXCHANGED, GRADE YIELD BASIS, BROWN EGGS LOOSE, AT FARM, CENTS PER DOZEN RANGE JUMBO .72-.75, EXTRA LARGE .69-.72, LARGE .66-.69, MEDIUM .45-.48, SMALL .18-.21.
BOSTON: PRICES TO RETAILERS, SALES TO VOLUME BUYERS, USDA GRADE A AND GRADE A, BROWN EGGS IN CARTONS, DELIVERED STORE DOOR, CENTS PER DOZEN. RANGE EXTRA LARGE .89-.92, LARGE .86-.90, MEDIUM .64-.67.

Philadelphia Eggs

Thursday, January 13, 1994
 Report Supplied by USDA
MARKET COMMENT: TRADE SENTIMENT WAS CAUTIOUSLY STEADY TO WEAK. DEMAND WAS GENERALLY FAIR. SUPPLIES OF EXTRA LARGE WERE ADEQUATE, LARGE WERE ADEQUATE TO AMPLE, AND MEDIUMS WERE ADEQUATE TO FULLY ADEQUATE. A EXTRA LARGE .65-.75, A LARGE .63-.73, A MEDIUM .58-.59.

We Buy Poultry Weekly

For Cash!
 • Leghorn Fowl
 • Spent Fowl
 • White Pigeons
 • Bantams
 • Bantam Roosters
 • Broilers
 • Rabbits
 • Guinea Hens
 • Muscovy Ducks
 We Pick Up At The Farm
Watkin's Live Poultry
 718-272-6712
 between 7 AM & 6 PM
 718-843-0302
 After 7 PM

JACKSON AVE. LIVE POULTRY

WE BUY POULTRY FOR TOP CASH WEEKLY
 • Muscovy Ducks
 • Rabbits
 • Broilers
 • Bantam Roosters
 • White Pigeons
 • Guinea Hens
 We Buy 1000-1500 Red Spent Fowl and Leghorn Fowl Weekly
 We pick up at the farm (718) 665-1441 between 7 am - 5 pm OVER 25 years in the area

SUBSCRIPTION INFORMATION

Subscription Price:
 \$19.75 per year; \$37.50 - 2 years
 \$30.00 per year outside of:
 PA, NJ, MD, DE, NY, OH, VA & WV
 \$58.00 - 2 Years
 Non-Refundable

Lancaster Farming (ISSN 0023-7485) is published weekly for \$19.75 per year; \$37.50 - 2 years by Lancaster Farming, P.O. Box 609 1 E. Main Street, Ephrata, PA 17522 Second Class postage paid at Ephrata, PA 17522 POSTMASTER: Send address changes to LANCASTER FARMING, 1 East Main Street, P.O. Box 609, Ephrata, PA 17522.

Phone: Lititz (717)626-1164 or Ephrata (717)733-6397, Lancaster (717)394-3047
 FAX 717-733-6058

For address change form or new subscription see near Mailbox Markets.

Members of National Association of Agricultural Journalists
 Pa. Newspaper Publishers Association, and National Newspaper Association.
 National Advertising Representative
 J.L. Farmakis, Inc.
 Phone (203)966-1746

Available On Microfilm

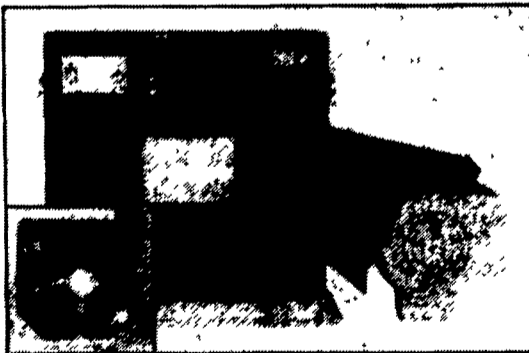
Copies of Lancaster Farming are available on microfilm from University Microfilms International, 300 North Zeeb Road, Ann Arbor, Michigan. Any questions about their service should be directed to the publishing manager.

PUBLISHER'S LIABILITY FOR ERROR

The publisher shall not be liable for slight changes or typographical errors that do not lessen the value of an advertisement. The publisher's liability for other errors or omissions in connection with an advertisement is strictly limited to publication of the advertisement in any subsequent issue or the refund of any monies paid for the advertisement.

Hammer Mills

The practical approach to grinding and mixing high moisture and dry grains



FEATURES

- ★ Low Initial Cost
- ★ Low Maintenance
- ★ Easy Serviceability
- ★ Heavy Duty Plate Magnet
- ★ Dust Tight Enclosure
- ★ 360° Screen
- ★ Low Operating Cost
- ★ Compact Design
- ★ Reversible Hammers & Screens
- ★ Removable Wear Plate
- ★ Self Locking Door Latches



automatic farm systems

608 Evergreen Rd.
 Lebanon, PA 17042
 (717) 274-5333

EGG MARKETING SOFTWARE Egg Marketing Accounting System (EMAS)

For Egg Marketers and Producers/Packers.

Tracks:

- ✓ customer activity.
- ✓ eggs in stock.
- ✓ eggs needed (by size & packaging for daily delivery).

Automatically:

- ✓ prices eggs.
- ✓ invoices customers.
- ✓ generates daily loading sheets.

We will customize EMAS to suit your business

Heritage
 Computer Solutions

A division of Heritage PMS, Inc.
 Annville, PA
 1-800-388-EGGS