

## Best Buys in Used Equipment

### TRACTORS

- Case IH 885
- Case IH 7120
- Case SC Tractor
- Case 438
- Case 630 — \$1,500
- Case 1370
- IH 856 w/Loader
- IH 2500A Tractor w/Loader
- David Brown 990 w/Loader
- Int. 674
- Int. 886
- Farmall H w/Loader
- Farmall 300
- Ford 8N
- Farmall 350
- JD 2955 w/Loader
- JD 2950

### TILLAGE

- Int. 2-Box Trailer Plow
- Ford 5-Bottom Plow
- Case 16" Reset Plow, 5 Bottom
- IH 710 5-Bottom Plow
- JD 6-18 Plow
- JD 1120 Disk
- Bush Hog 15 Ft. Disk
- Case 7 Tooth Consertill
- Landoll Consertill, 7-Tooth
- Ford 10 Ft. Disk Harrow
- IH 720, 18" 5-Bottom Plow
- JD 2600 5 Bottom Plow

### HARVESTING EQUIPMENT

- Hesston 2000-100 Harvester
- NI 717 Combine
- NI 844N
- NI 315 Sheller
- NI 324 Sheller
- NI 727 Husking Bed
- NI 787 Super Chopper
- NI 323 1-Row Corn-picker
- NI 325 12 Row Husking Bed
- IH 120 Forage Box

### MISCELLANEOUS

- Farmmaster Tumble Mixer
- Int. 105 Grinder Mixer
- Kverneland Bale Wrapper
- NH 36 ft. Elevator
- Gehl 99 Blower
- NI 620 Blower
- Automatic Roller Mill
- NI 213 Spreader
- NI 218 Spreader
- NI 224 Spreader
- NI 245 Spreader
- HM 1674 Spreader
- Gehl 250 Spreader
- 500 Gal. Century Sprayer
- Weaverline 430, Nice
- High Rise Cart
- IH 5100 Drill
- JD 8300 Drill—Soybean Special!

- Martin's Equalizer
- NI 3622 Spreader
- NI 3628 Spreader
- Ford Loader
- 9 Ton & 6 Ton Trailers
- Miller Spreader

### LOADERS

- Case 530 Backhoe
- Case 1835B
- Case 1835C
- Case 1835 Gas
- Case 1830
- Case 1845C
- Loader For Case 530
- Case 1845 Diesel
- NH 555 Skid Loader
- Case 1845B Diesel

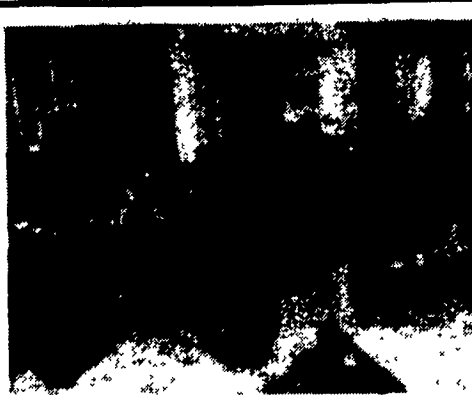
### HAY EQUIPMENT

- Hesston 1150 Mower Conditioner
- NH 778 Baler
- NH 479 Haybine
- NH 278 Baler
- NH 1495 SP
- Hesston 1014's, \$2,600
- Hesston 1090 Windrower
- Hesston 1091 Windrower
- IH 445 Square Baler
- IH 1190 Mower Cond.
- NI 486 Round Baler
- (2) Case Int. 8330 Windrower

## ZIMMERMAN'S FARM SERVICE

1/2 Mile West Off Rt. 501 On School Rd., Bethel, Pa.

717-933-4114



### USED AMT SALE

(3) To Choose From  
All In Excellent Condition With  
Hyd-Lift On Cargo Box  
717-235-9400  
**SOUTHERN YORK TURF  
& TRACTOR INC.**  
Shrewsbury, PA 17361

## Martin Tractor

866 Greenspring Rd.  
Newville, PA 17241

### Used Tractors

- JD 4230 Power Shift \$9,500 • White 4-150 \$7,500 • JD 4020 \$6,500 • Case 1370 \$7,500
- IH686 \$5,500 • JD 3020 WF, \$6,200 • Case DC (Foot Clutch) \$950 • Ford TW10 \$7,500

### Used Tractor Parts

Most Makes and Models  
Have Large Selection

Recent Arrivals: Oliver 600; AC D14; JD 4230; AC D17; Oliver 70; JD 60; IH 560; JD 720 dsl; JD 4230; JD 2020; AC 185; JD 4030; JD 4230; JD 4320; IH 706; IH350;

Call (717) 776-7542  
for detailed information  
**MON-FRI 8-5 SAT 8-12**  
No Sunday Calls Will Ship UPS  
No Out-Of-State Personal Checks

### "FREE CATALOG" CALL OR WRITE

DIRECTIONS TO OUR MIDDLETOWN STORE- On your road map, we are on Route 230 mid way between Middletown & Elizabethtown. Take the Toll House Rd. exit off Rt. 283, turn and go to stop at Rt. 230, go east on 230 1-1/2 mi. on the right.



DEPARTMENT L F  
4294 EAST HARRISBURG PIKE  
MIDDLETOWN, PA 17057

HOURS: Mon.-Fri. 9-6  
Saturday 9-2  
Sunday - Closed  
(717) 944-0318

### "RESTORED & REPRODUCTION" OLD GAS PUMPS AND PARTS



Great For The Den Or Garage,  
Very Colorful, Guaranteed  
Conversation Piece, Short  
Ours — Tall Ours, We Even  
Have One Turned Into An  
Authentic Slot Machine!  
Also - Globes, Signs & Parts To  
Restore Your Own, Call And  
Ask For  
Pump Catalog

We Buy Old Pumps  
& Other  
Gas Station  
Relics!!!!

### AIR COMPRESSORS & MORE IN OUR CATALOG

6 H.P. VERTI-  
CAL ASME  
CODED TANKS,  
2-STAGE  
PUMPS, CAST  
IRON CYLS,  
INDUSTRIAL  
MODELS  
w/MAG  
STARTER IF  
REQ.



LOW  
AS \$899.00  
ALSO 7 1/2 H.P. AVAILABLE



PRESSURE POT BLASTERS - 125 Lb Capacity  
\$269, 325 Lb \$499  
BLAST CABINETS - 4' Wide Unit With All The  
Goodies \$699, 3' Wide Unit w/Options Available  
\$399, Closeout On Mini Table Top Unit Till Gone.

### Performance Sale!

Holley



GENETLINE

RAMMER

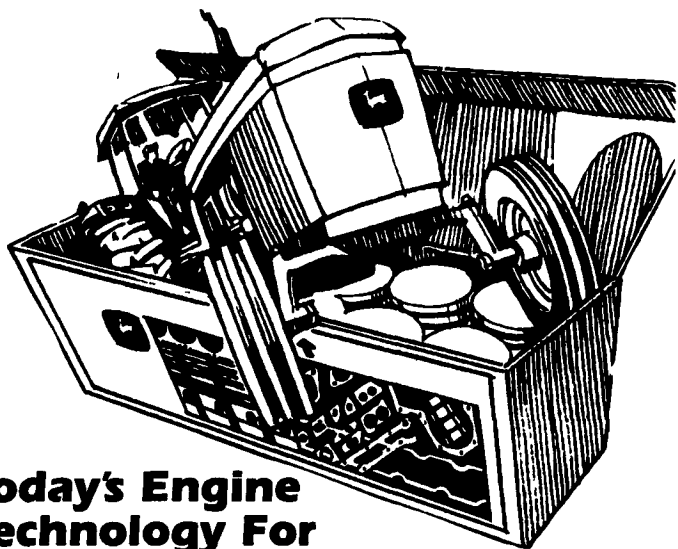
MUCH, MUCH MORE  
AVAILABLE!!



USE  
YOUR



# ADAMSTOWN EQUIPMENT



## Today's Engine Technology For Yesterday's Engines

Get everything you need to rebuild your John Deere engine...and it's all here, in one box. No other kit offers this unique combination—at any price! Here's what you get:

- Ready-to-install factory-assembled power cylinders
- Hardened cylinder liners that resist cavitation
- Viton® liner seals outlast ordinary seals
- Teflon® surfaced rear seals incorporate dust excluders
- Factory-new power—possibly better than new performance



AS LOW AS  
**\$595<sup>00</sup>** Sale price good through Feb. 5, 1994

FOR JOHN DEERE (2030L and 2440 tractors)  
Call Nelson and ask about our installation price. If we  
install the kit, the warranty covers both parts AND labor.



**ADAMSTOWN EQUIPMENT, INC.**  
Box 456, Bowmansville Road  
Adamstown, PA 19501 • 215-484-4391



## COME SEE WHAT'S NEW UNDER THE SUN

Make plans now to attend John Deere Day '94. You'll see the brightest ideas in technology and new John Deere equipment designed for the way you farm, including:

- New 92- and 100-hp Tractors
- New 4WD Tractors
- New Corn heads
- New MoCo's
- New Disk/Ripper
- New Rotary Cutter

Don't miss our day in the sun. See the latest John Deere equipment at:

**ADAMSTOWN EQUIPMENT, INC.**  
Box 456, Bowmansville Road  
Adamstown, PA 19501 • 215-484-4391

Date: **Thursday, January 24, 1994**  
Time: **10:30 AM & 7:00 PM**  
Place: **At Our Dealership**



**10% Cash Discount On All Parts In Stock  
From Jan. 24 to Feb. 5, 1994**

**Tractors:**  
4670 dsl, 4030 dsl, 2840 dsl, (2)  
2510 gas, 2010 gas.

### Planting Equipment:

4R Stanhay, 15R Stanhay, 8R  
Planet Jr., 9R JD #71, IH 510 grain  
drill (6x24), 4R Holland  
transplanter, 9R Holland  
transplanter.

### Fertilizer Applicators:

Vicon 1400H hopper 3pt. hitch,  
Wilmar 5-ton w/side auger, 3pt.  
hitch 6x30" side dresser w/SS  
hopper

### Tillage:

Lely Roterra 15' w/bed shapers,  
JD 6-shenk subsoiler, JD 25 coil  
spring field cultivator, (3)Brillion  
packers 12' & 4', bed shaper 15'  
wide 3-60" beds or 9 rows, bed  
shaper 10' wide 4-30 rows, M&M  
5x18" 2-way mold board plow

### Cultivators:

JD RR4, JD RM 15' 9R w/shields,  
JD RM 15' 3 beds, Ford 11 shenk  
2R w/shields.

### Flat 2-Wheel Wagons:

(4) 8'x20' 8-ton, (2) 8'x17' 8-ton, (2)  
8'x16' 4-ton, (3)Chisom rider  
dump carts.

### Irrigation:

Detroit 671 w/Worthington  
2000/GPM, Duetz 135hp  
w/Cornell 1400/GPM, (2)  
Rainbow travelers.

### Wade Rain Pipe:

(34) 8"x40' ring lock, (96) 6"x40',  
(280) 4"x40' w/Rainbird 30's, T's,  
L's, valves & plugs.

### Trucks

'81 Int. 2600 Tdm. Axle, 22' flat  
dump, w/grain sides, 56 GVW.  
80' Int. 1800, 20' flat w/grain sides,  
27 GVW. '78 Ford P600 step van,  
15 GVW. '74 Ford 750 Cab/  
Chassis 27 GVW. '63 GMC 5000,  
22' van body, 27 GVW. '70  
Diamond Reo Tandem Tractor.  
1969 Fruehauf Stainless Steel 13'  
4"x45' Dry Box

609/358-0831