

Pa. Grain

Monday, January 3, 1994
Report supplied by PDA

COMPARED WITH THE MARKET FOR LAST MONDAY, FOR SOUTH-EASTERN, CENTRAL, AND SOUTH CENTRAL PA: CORN STEADY TO .05 HIGHER; WHEAT STEADY TO .06 HIGHER; BARLEY STEADY TO .04 HIGHER; OATS STEADY TO .03 HIGHER; SOYBEANS STEADY TO .12 HIGHER; EAR CORN STEADY TO 1.50 HIGHER.

SOUTHEASTERN PENNSYLVANIA
CORN NO. 2-Y RANGE 3.15-3.45, AVERAGE 3.28; @WHEAT NO. 2 RANGE 3.69-4.05, AVERAGE 3.86, CONTRACT FOR HARVEST 3.39-3.53; BARLEY NO. 3 RANGE 2.10-2.70, AVERAGE 2.37, CONTRACT FOR HARVEST 2.00; OATS NO. 2 RANGE 1.40-1.85, AVERAGE 1.70; SOYBEANS NO. 1 RANGE 6.60-7.07, AVERAGE 6.86; FEW REPORTED GR. SORGHUM #2 RANGE 2.86, AVERAGE 2.86; FEW REPORTED NEW EAR CORN RANGE 76.00-97.00, AVERAGE 85.27.

SOUTH CENTRAL PENNSYLVANIA
CORN NO. 2-Y RANGE 3.00-3.35, AVERAGE 3.22; @WHEAT NO. 2 RANGE 3.15-3.90, AVERAGE 3.49; BARLEY NO. 3 RANGE 2.00-2.40, AVERAGE 2.18; OATS NO. 2 RANGE 1.45-1.90, AVERAGE 1.74; SOYBEANS NO. 1 RANGE 6.30-7.00, AVERAGE 6.69; NEW EAR CORN RANGE 60.00-85.00, AVERAGE 77.86.

SOUTHEASTERN, CENTRAL & SOUTH CENTRAL SUMMARY
CORN NO. 2-Y RANGE 2.95-3.45, AVERAGE 3.23; @WHEAT NO. 2 RANGE 3.20-4.05; AVERAGE 3.69; BARLEY NO. 3 RANGE 2.00-2.70,

AVERAGE 2.29; OATS NO. 2 RANGE 1.40-2.00, AVERAGE 1.71; SOYBEANS NO. 1 RANGE 6.25-7.00, AVERAGE 6.75; NEW EAR CORN RANGE 65.00-97.00, AVERAGE 80.50.

CENTRAL PENNSYLVANIA
CORN NO. 2-Y RANGE 2.95-3.30, AVERAGE 3.15; @WHEAT NO. 2 RANGE 3.20-3.78, FEW REPORTED 4.00, AVERAGE 3.55; BARLEY NO. 3 RANGE 1.90-2.45, FEW REPORTED 2.75, AVERAGE 2.29; OATS NO. 2 RANGE 1.50-2.00, AVERAGE 1.70; SOYBEANS NO. 1 RANGE 6.25-6.85, AVERAGE 6.60; FEW REPORTED NEW EAR CORN RANGE 65.00-78.00, AVERAGE 71.67.

WESTERN PENNSYLVANIA
CORN NO. 2-Y RANGE 2.65-3.10, AVERAGE 2.91; @WHEAT NO. 2 RANGE 3.30-3.62, AVERAGE 3.46; BARLEY NO. 3 RANGE 2.23-2.35, AVERAGE 2.29; OATS NO. 2 RANGE 1.10-1.90, MOSTLY 1.40-1.65, AVERAGE 1.50; SOYBEANS NO. 1, RANGE 6.25-6.67, AVERAGE 6.46; FEW REPORTED OLD EAR CORN RANGE 61.00-65.00, AVERAGE 63.00.

MONTH AGO
CORN NO. 2-Y 3.08; @WHEAT NO. 2 3.47; BARLEY NO. 3 2.10; OATS NO. 2 1.66; SOYBEANS NO. 1 6.46; FEW REPORTED NEW EAR CORN 72.59.

YEAR AGO
CORN NO. 2-Y 2.33; @WHEAT NO. 2 3.43; BARLEY NO. 3 1.78; OATS NO. 2 1.51; SOYBEANS NO. 1 5.46; FEW REPORTED NEW EAR CORN 55.09.

National Grain Market

St. Joseph, Mo.
Tuesday, January 4, 1994
DAILY NATIONAL GRAIN

SUMMARY: WHEAT PRICES CLIMBED SLIGHTLY HIGHER DUE TO GOOD EXPORT DEMAND AND REPORTS CHINA IS SEEKING 40 MILLION BUSHELS OF SOFT RED WINTER WHEAT. CORN AND SOY-BEAN PRICES FELL MODERATELY LOWER, PRESSURED BY LACK OF NEW EXPORT SALES AND INCREASED FARMER SELLING. WHEAT 2 TO 11 CENTS HIGHER. CORN 2 TO 3 CENTS LOWER. SORGHUM 1 TO 6 CENTS LOWER. SOYBEANS 6 TO 8 CENTS LOWER.

EXPORT NEWS: USDA ACCEPTED A BID TO SELL 25,000 TONNES HARD RED WINTER WHEAT TO TUNISIA UNDER EEP FOR FEBRUARY SHIPMENT. USDA ACCEPTED A BID TO SELL 1,000 TONNES NORTHERN/DARK NORTHERN SPRING WHEAT TO SUB-SAHARAN AFRICA UNDER EEP FOR JAN/ MAR SHIPMENT.

DATE CHANGE YEAR AGO TRUCK BIDS: 01/04/93 01/03/93 01/05/92 WHEAT: KANSAS CITY 4.03-4.05 UP 2 3.75-3.78 MINNEAPOLIS TRUCK BID MAR 4.92 1/4 DN 2 1/4 3.83 1/4 PORTLAND 3.58-3.61 UP 1-3 4.28-4.30 ST. LOUIS 3.71-3.77 UP 11-8 3.85-3.89.

CORN, U.S. NO. 2 YELLOW: KANSAS CITY 3.05-3.06 DN 2-3 2.11-2.14 MINNEAPOLIS 2.85 1/4 DN 1/2 1.99 3/4 SO. IOWA 3.04-3.07 DN 2 2.09-2.11 OMAHA 2.86-2.88 DN 3 1.96-1.97 SOYBEANS, NO. 1 YELLOW: KANSAS CITY 7.00-7.01 DN 6-8 5.60-5.62 MINNEAPOLIS 6.73 1/2 DN 6 1/4 5.42 1/4

SO. IOWA 7.02-7.07 DN 7 5.54-5.62 C. ILL. PROCESSORS 6.93 1/2-7.04 DN 6 1/4-6 5.69 1/4-5.73 1/4.

***TRUCK BIDS FOR KANSAS CITY, US NO. 1 HARD RED WINTER WHEAT, ORDINARY PROTEIN. MINNEAPOLIS, US NO. 1 DARK NORTHERN SPRING WHEAT, 14% PROTEIN. PORTLAND, NO. 1 SOFT WHITE WHEAT, ST. LOUIS, NO. 2 SOFT RED WINTER WHEAT.**

FUTURES CLOSE: KANSAS CITY (MAR) WHEAT 3.83 1/4 UP 2 1/2 3.52 3/4 MINNEAPOLIS (MAR) WHEAT 3.92 1/4 DN 2 1/4 3.41 1/4 CHICAGO (MAR) WHEAT 3.80 3/4 UP 8 3.61 1/2 (MAR) CORN 3.06 1/4 DN 1/2 2.16 3/4 (JAN) SOYBEANS 6.92 1/2 DN 6 1/4 5.70 1/4 MARCH (MAR) SOYBEANS 7.02 DN 7.

EXPORT: BARGE OR RAIL, PORT OF NEW ORLEANS OR NORTH TEXAS GULF. NO. 1 HARD RED WINTER WHEAT ORDINARY PROTEIN 4.31 1/4-4.32 1/4 UP 1/2 4.06 3/4-4.08 3/4 NO. 2 SOFT RED WINTER WHEAT 3.99 3/4-4.04 UP 10-8 4.06 1/2-4.07 NO. 2 YELLOW CORN 3.19 1/4-3.21 DN 1-NC 2.36 3/4-2.37 NO. 2 YELLOW SORGHUM RAIL 5.58 NC BARGE 5.54 DN 1 4.26-4.25 NO. 2 YELLOW SOYBEANS 7.24-7.25 DN 6-5 1/4 5.95-5.96 BIRD THIS REPORT A SERVICE OF U.S. DEPARTMENT OF AGRICULTURE, LIVESTOCK AND GRAIN MARKET NEWS, ST. JOSEPH, MISSOURI.

New York & Phila. Frozen Egg Report

Tuesday, January 4, 1994

The market tone was unsettled as traders watched for post holiday adjustments. Buying activity was usually limited to fill-in needs. Raw materials were readily available and easily satisfied production schedules. Floor stocks were in good balance to cover current dealers needs. A major snow storm was affecting production schedules and deliveries throughout the area.

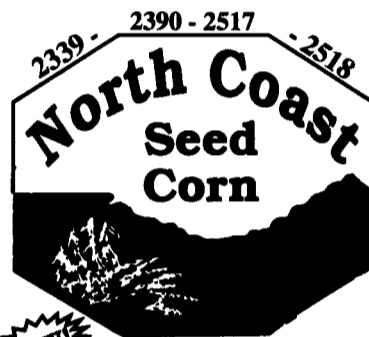
WHOLESALE SELLING PRICES (CENTS PER POUND IN 30 LB. CONTAINERS) TRUCKLOTS LTL (MIN. 25 CONT.) RANGE MOSTLY RANGE WHOLE 47-50 48-49 51-60 BLEND () - 59-69 WHITES 38-42 40-41 43-50 SUGARED YOLKS (MIN 43% SOLIDS) 58-61 58-59 62-66 SALTED YOLKS (MIN 43% SOLIDS) 53-56 54-55 57-61 () - WHOLE PLUS YOLK PLUS SWEETENER, GENERALLY 28-32% EGG SOLIDS.



BOYDELL FARMS

302 Iona Road, Lebanon, PA 17042
Phone: 717-272-8943

DISTRIBUTORS FOR:
SILO QUEEN



- 502 - 109 Day
- 2307 - 107 Day
- 2400 - 110 Day
- 2525 - 117 Day

SOYBEANS

Agri & North Coast

- 8836 354,284
- 9139 Shore and
- 9329 The All New 374
- 9434



Also Avail. Resnick & Pella

ALFALFA

ALL NEW 94MPR 84VWAP,
wetfoot, Erie
Buy 5 - get one FREE
Clover \$59.95 per 50
Climax Timothy \$29.95 per 50

OATS

Noble Porter Ogle Hercules

Baler Twine Fertilizer

WHOLESALE & RETAIL

NEED TO CUT THE FEED BILL?

NEW DAIRY BLEND COMPLETE AND CONCENTRATE FEEDS

COMPLETE FEEDS

#79516
Dairy Blend Flakes
16% All Natural
\$163⁰⁰

#79518
Dairy Blend Flakes
18% All Natural
\$173⁰⁰

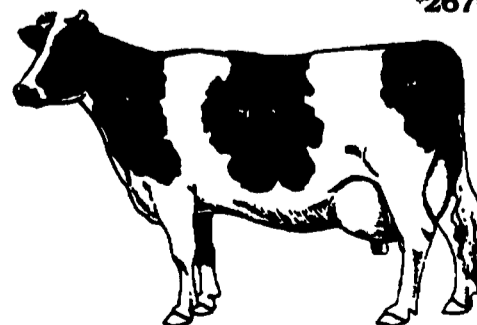
#79520
Dairy Blend Flakes
20% All Natural
\$183⁰⁰

CONCENTRATE FEEDS

#51232
32% All Natural
Protein Pellets
\$231⁰⁰

#51238
38% All Natural
Protein Pellets
\$258⁰⁰

#50734
34% All Natural
Protein Pellets
w/Steam Flaked Soybeans
\$267⁰⁰



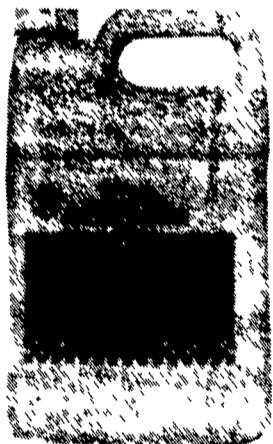
Bulk Feed Available in 1 to 24 Ton Loads

Feed prices for Week of January 4 and Subject to Change Weekly with Grain Market
Includes 8 ton volume discount and cash discount of 2% due 15th following month. Deduct additional \$3.00 per ton if paid in 10 days



pennfield feeds

HESSMILLS
LICE SEASON IS HERE!



Purina® Hard Hitter Pour-On Insecticide Kills Lice

- Easy To Use - Just Pour It On
No Mixing
- No Withdrawals - Safe
- Use On Lactating And Non-Lactating Cattle
- Long Lasting
- Quick Working

HESSMILLS



PURINA CHOWS

6 S. Vintage Rd., Paradise, PA 17562

(717) 442-4183 (717) 768-3301 800-635-3592

™ Trademark of Purina Mills

* Registered trademark of Ralston Purina Company